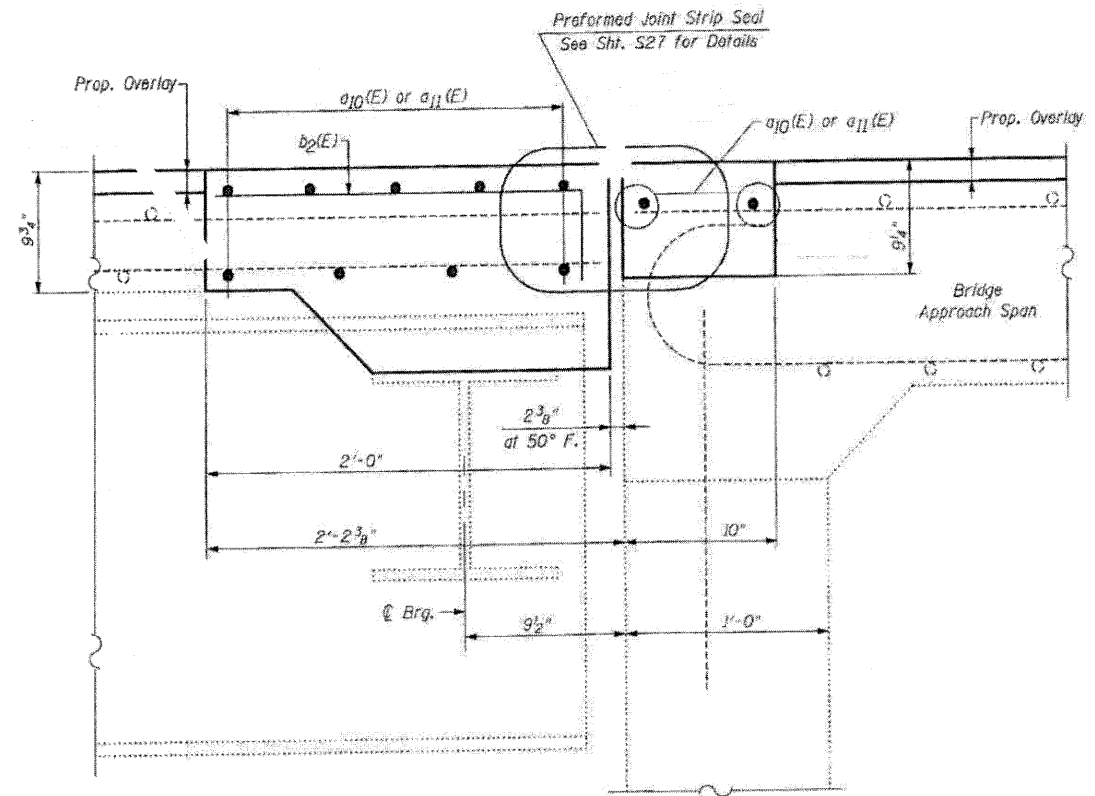
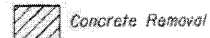


EXISTING

SECTION B-B

NORTHBOUND STRUCTURE-NORTH ABUTMENT

LEGEND:



PROPOSED

SECTION B-B

NORTHBOUND STRUCTURE-NORTH ABUTMENT

NOTE:
For Bar Splicer Assembly Details, See Sht. 526

FILE NAME: 0520052-64E97-12-N-Abut-NB.dwg
PLOT DATE: 03/29/2010
PLOT SCALE: 50.0000 X 1 IN.

CHRISTIAN-ROGE & ASSOCIATES, INC.
ENGINEERS-PLANNERS-SURVEYORS
211 WEST WACKER DRIVE
CHICAGO, ILLINOIS 60606
PHONE: (312)372-2023 FAX: (312)372-5274

DESIGNED -	B.N.S./J.C.N.	REVISED -	
DRAWN -	D.L./F.M.	REVISED -	
CHECKED -	B.N.S./J.C.N.	REVISED -	
DATE	MARCH, 2010	REVISED -	

STATE OF ILLINOIS
DEPARTMENT OF TRANSPORTATION

JOINT RECONSTRUCTION DETAILS AT NORTH ABUTMENT
NORTHBOUND STRUCTURE
I-39 OVER U.S. RTE. 30
S.N. 052-0053

SCALE: SHEET NO. 512 OF 526 SHEETS STA. TO STA.

F.A.I. RTE.	SECTION	COUNTY	TOTAL SHEETS	SHEET NO.
39	(103-1, 103-2)RS	LEE	313	147
CONTRACT NO. 64E97				
FED. ROAD DIST. NO. [ILLINOIS] FED. AID PROJECT				