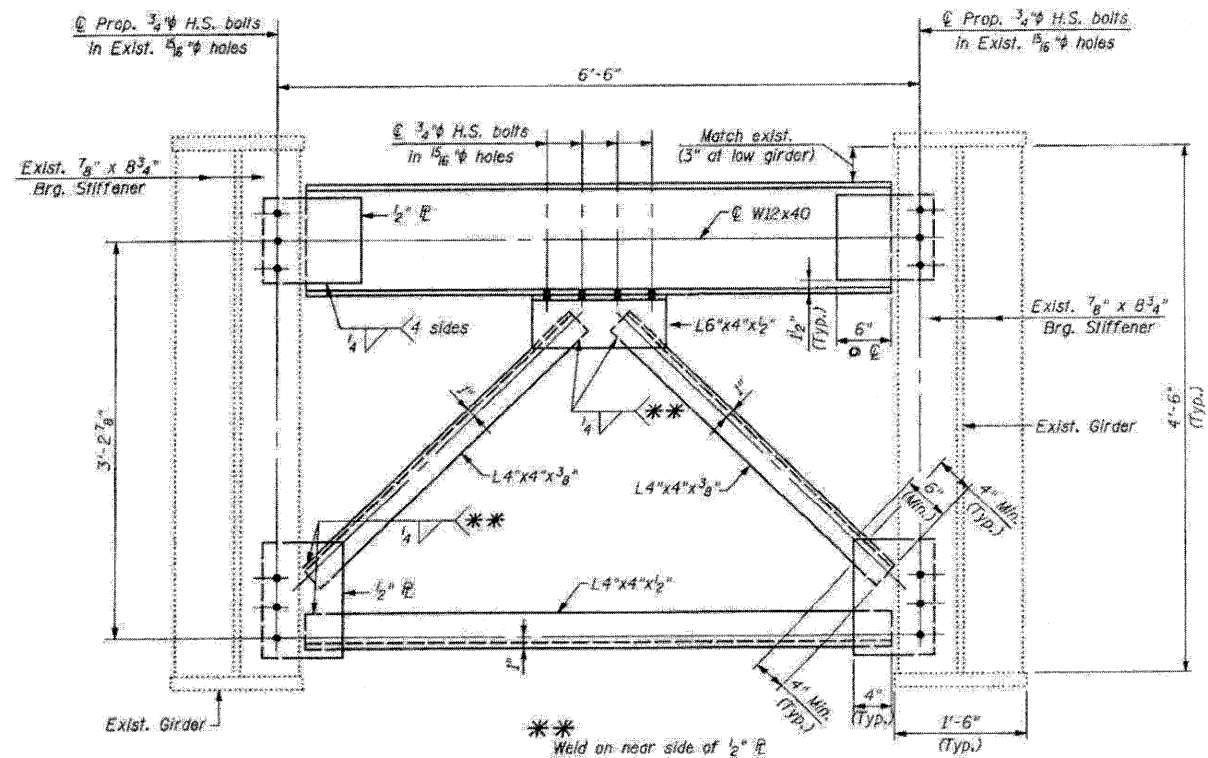
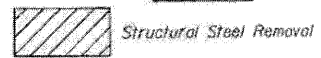


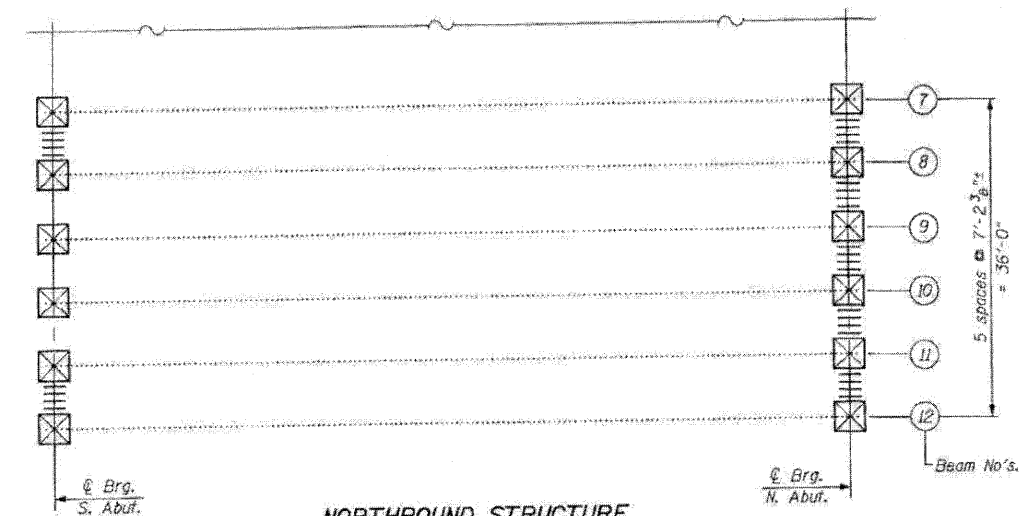
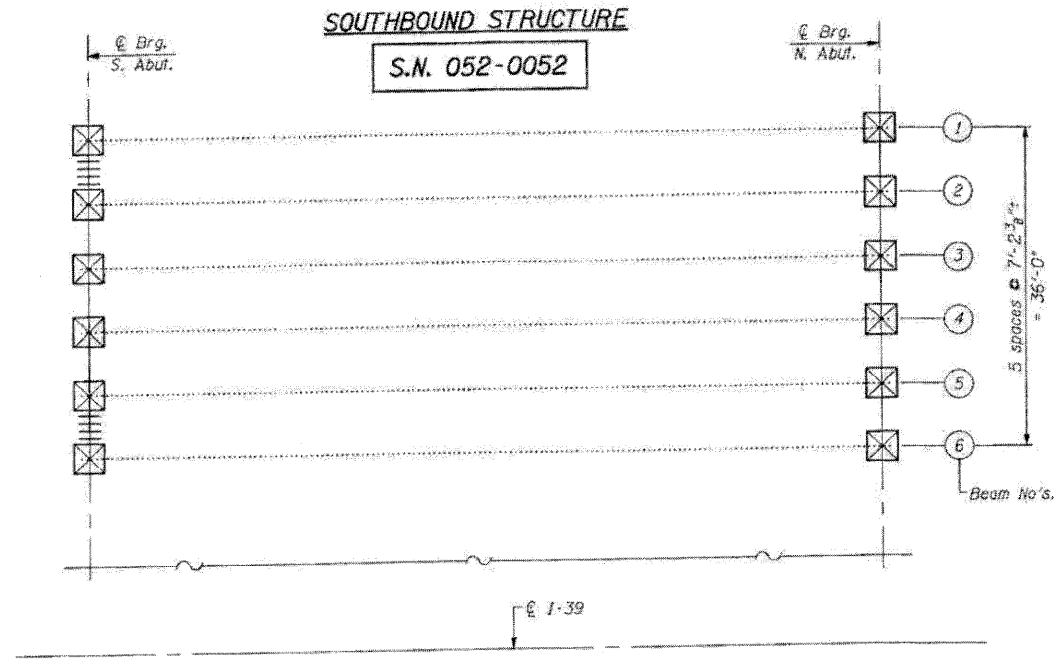
**EXISTING END DIAPHRAGM**  
(See Framing plan for locations)  
(9 thus)

**LEGEND:**

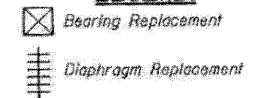


**PROPOSED END DIAPHRAGM**  
(See Framing plan for locations)  
(9 thus)

Notes:  
Two hardened washers required for each set of oversized holes.  
For bearing replacement, see Sht's: S14 & S15.



**LEGEND:**



**BILL OF MATERIAL**

ITEM	UNIT	QUANTITY
Structural Steel Removal	Pound	4,400
Furnishing and Erecting Structural Steel	Pound	4,900

FILE NAME: 0520052-64E97-13-std-repairs.dwg  
PLOT DATE: 3/29/2010  
PLOT SCALE: 98.0000 1/1 IN.

**CHRISTIAN ROGE & ASSOCIATES, INC.**  
ENGINEERS-PLANNERS-SURVEYORS  
211 WEST WACKER DRIVE  
CHICAGO, ILLINOIS 60606  
PHONE: (312)372-2023 FAX: (312)372-5274

DESIGNED: B.N.S./J.C.N.  
DRAWN: D.L./F.M.  
CHECKED: B.N.S./J.C.N.  
DATE: MARCH, 2010

REVISED: -  
REVISED: -  
REVISED: -  
REVISED: -

**STATE OF ILLINOIS**  
**DEPARTMENT OF TRANSPORTATION**

**STRUCTURAL STEEL REPAIRS**  
**SOUTHBOUND & NORTHBOUND STRUCTURES S.N. 052-0052**  
**I-39 OVER U.S. RTE. 30 S.N. 052-0053**

SCALE: SHEET NO. S13 OF 528 SHEETS STA. TO STA. F.A.I. RTE. 39 SECTION (103-1, 103-2RS) COUNTY LEE TOTAL SHEETS 313 SHEET NO. 148 CONTRACT NO. 64E97 FED. ROAD DIST. NO. ILLINOIS FED. AID PROJECT