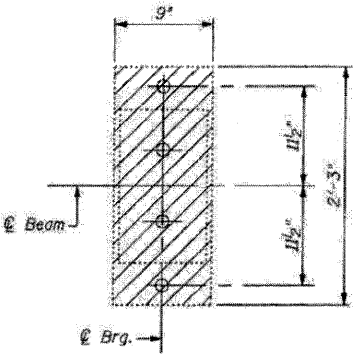


**ELEVATION**



**PLAN**

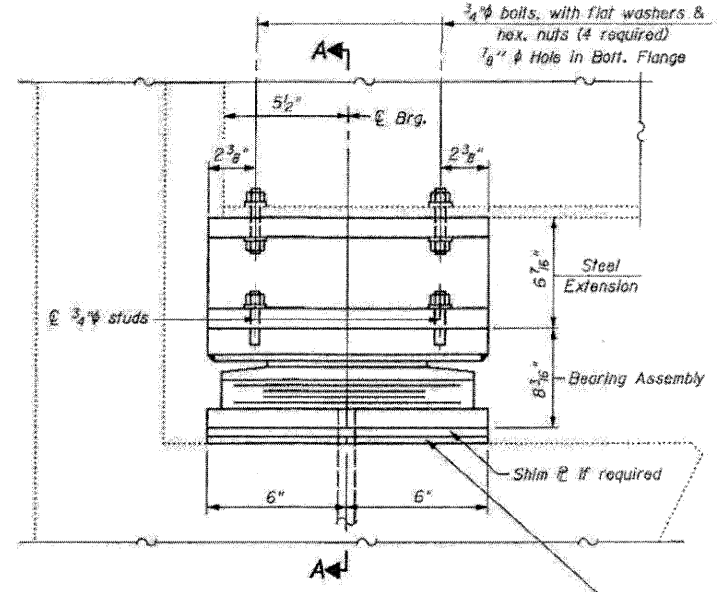
**EXISTING BEARING REMOVAL AT NORTH ABUTMENT**

**INTERIOR GIRDER REACTION TABLE**

	North Abutment (SB)
R <sub>D</sub>	(k) 86.6
R <sub>L</sub>	(k) 45.1
R <sub>Imp.</sub>	(k) 8.7
R (Total)	(k) 140.4

**INTERIOR GIRDER REACTION TABLE**

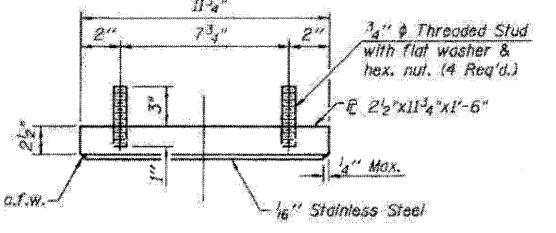
	North Abutment (NB)
R <sub>D</sub>	(k) 80.7
R <sub>L</sub>	(k) 43.6
R <sub>Imp.</sub>	(k) 8.7
R (Total)	(k) 133.0



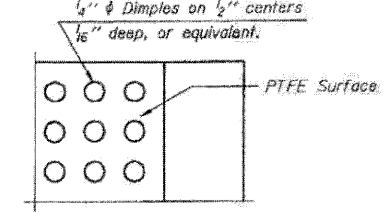
1/2" elastomeric neoprene leveling pad according to the material properties of Article 1052.02(a) of the Standard Specifications. Cast included with Elastomeric Bearing Assembly, Type II

**ELEVATION**

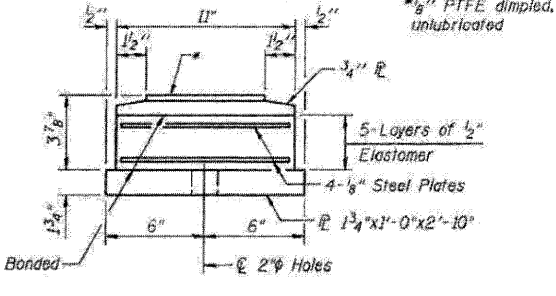
**PROPOSED TYPE II ELASTOMERIC EXP. BRG. WITH FABRICATED STEEL EXTENSIONS**  
(12 required)



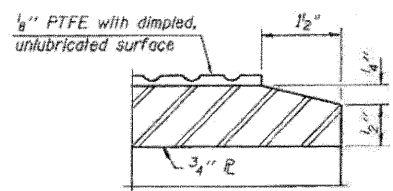
**TOP BEARING ASSEMBLY**



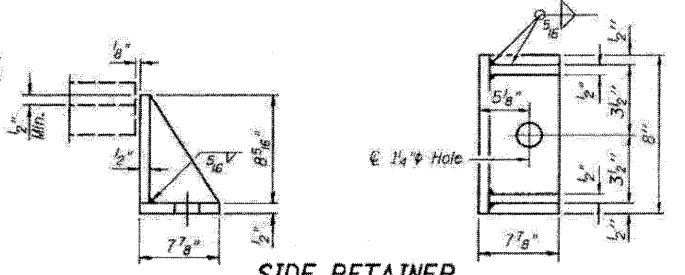
**PLAN-PTFE SURFACE**



**BOTTOM BEARING ASSEMBLY**

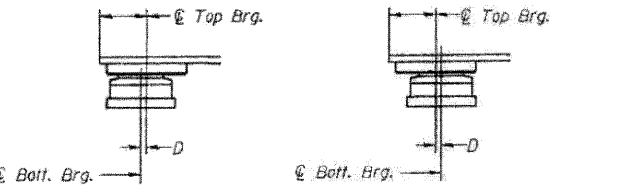


**SECTION THRU PTFE**

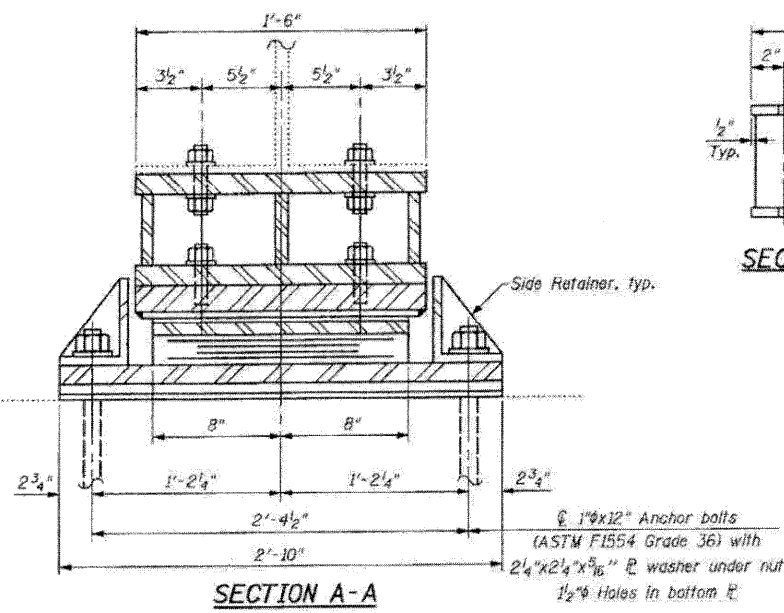


**SIDE RETAINER**

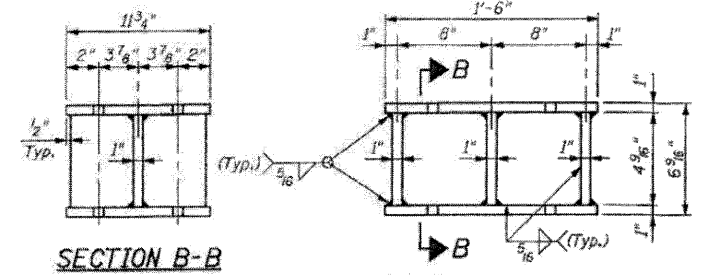
Equivalent rolled angle with stiffeners will be allowed in lieu of welded plates.



**SETTING ANCHOR BOLTS AT EXP. BRG.**  
D=1/8" per each 100' of expansion for every 15° temp. change from the normal temp. of 50°F.



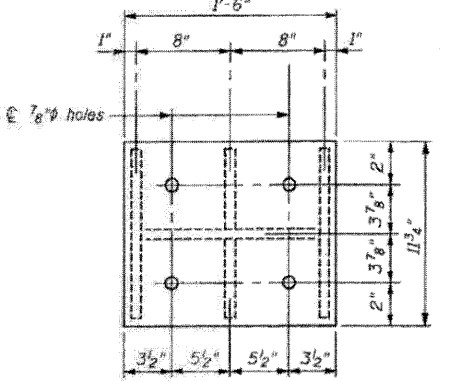
**SECTION A-A**



**SECTION B-B**

**STEEL EXTENSION ELEVATION**

**STEEL EXTENSION DETAIL**  
(12 required)



**TOP & BOTTOM PLATE PLAN**

**BILL OF MATERIAL**

Item	Unit	Total
Elastomeric Bearing Assembly, Type II	Each	12
Anchor Bolts, 1"	Each	24
Furnishing and Erecting Structural Steel	Pound	2,300
Jack and Remove Existing Bearings	Each	12

**Notes:**  
Anchor bolts shall be ASTM F1554 all-thread (or an Engineer-approved alternate material) of the grade(s) and diameter(s) specified, ASTM A307 Grade C anchor bolts may be used in lieu of ASTM F1554 Grade 36 (F<sub>y</sub>=36ksi). The corresponding specified grade of AASHTO M314 anchor bolts may be used in lieu of ASTM F1554.  
Anchor bolts for Type II bearings shall be placed in holes drilled in the concrete through holes in the bottom bearing plate after members are in place. Side retainers shall be placed after bolts are installed.  
Drilled and set anchor bolts shall be installed according to Article 521.06 of the Standard Specifications.  
Prior to ordering any materials, the Contractor shall verify, in the field, all bearing height and shim thickness dimensions.  
Side retainers and other steel members required for the bearing assembly shall be included in the cost of Elastomeric Bearing Assembly, Type II.  
The 1/8" PTFE sheet shall be bonded directly to the top steel plate with a two-component, medium viscosity epoxy resin, conforming to the requirements of the Federal Specification MMM-A-134, Type I. The bond agent shall be applied on the full area of the contact surfaces.  
Bonding of 1/8" PTFE sheet during vulcanizing process will be permitted provided the process and method of adjusting assembly height is approved by the Engineer.  
Min. jack capacity = 90 tons at each bearing location  
Steel extensions, shim plates and connection bolts are included with Furnishing and Erecting Structural Steel.  
Two 1/8 in. adjusting shims shall be provided for each bearing in addition to all other plates or shims and placed as shown on bearing details.

**BEARING DETAILS**  
**STRUCTURE NO'S. 052-0052 (SB) & 052-0053 (NB)**