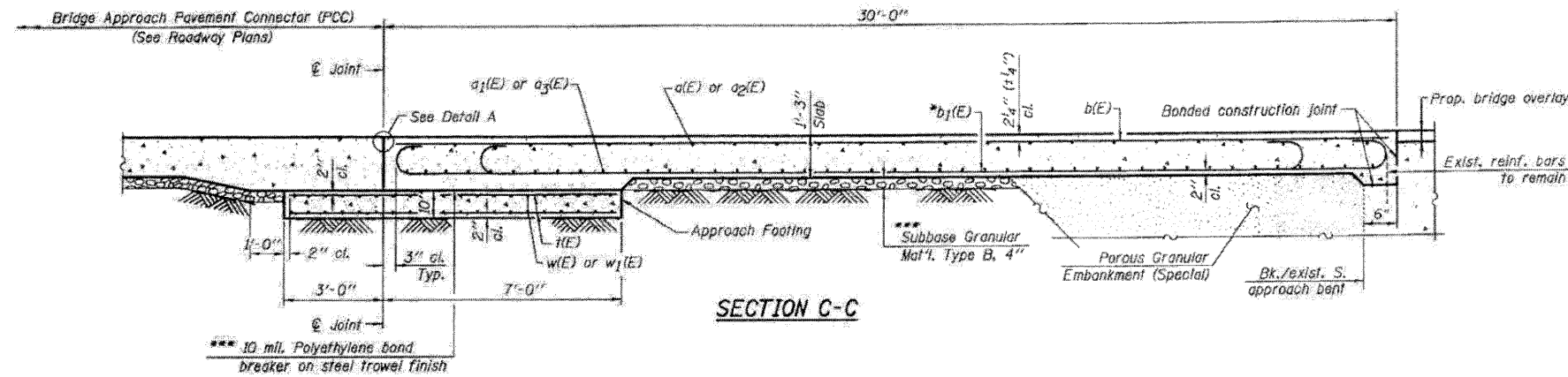


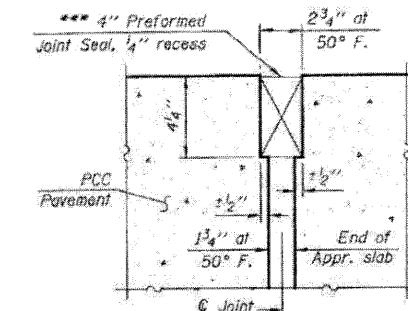
Notes:
 Approach slab and parapet concrete shall be paid for as Concrete Superstructure.
 Approach footing concrete shall be paid for as Concrete Structures.
 Reinforcement shall be paid for as Reinforcement Bars, Epoxy Coated.
 The approach footing maximum applied service bearing pressure (Q_{max}) = 2.0 ksf.
 For bar splicer details, see sheet S26.
 Cost of excavation for approach footing included with Concrete Structures.



* Tilt #9b1(E) bars as required to maintain clearance.

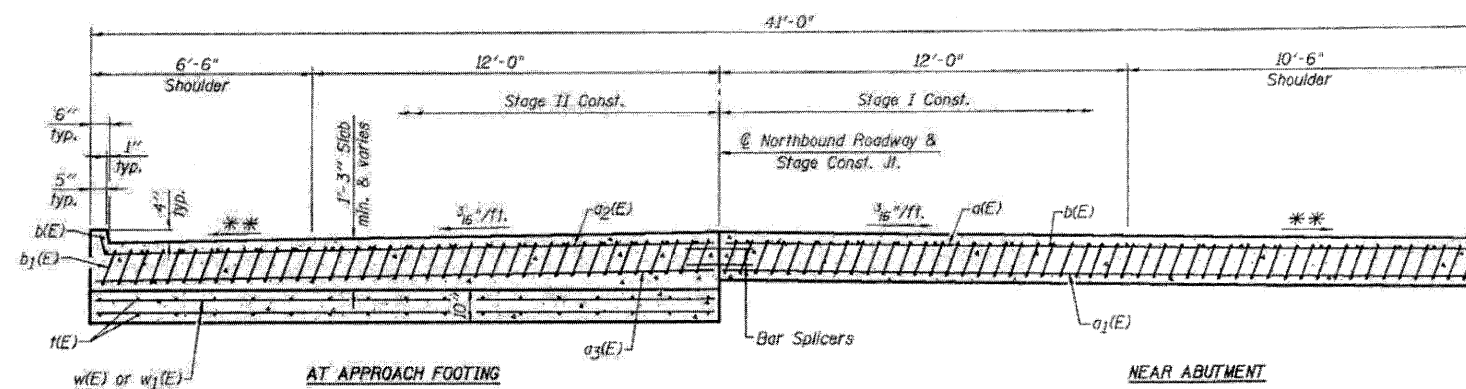
*** Cost included with Concrete Superstructure.

*** Cost included with Concrete Superstructure



RIGID PAVEMENT

DETAIL A

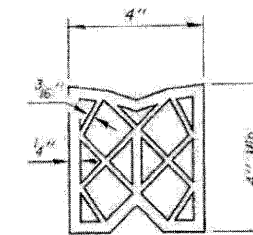


SECTION D-D

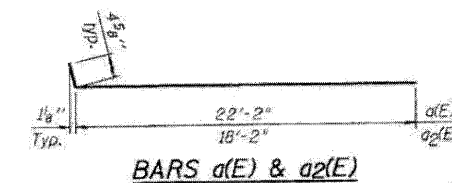
(See Plan for dimensions not shown)

NEAR ABUTMENT

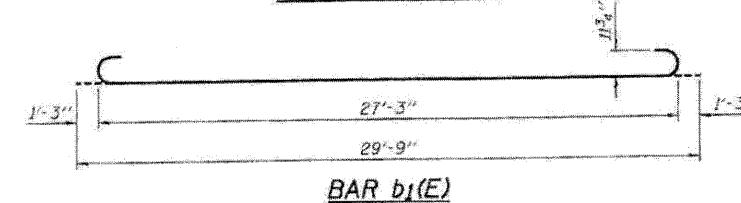
**
 Varies from 2% at bridge to 4%



PREFORMED JOINT SEAL



BARS a(E) & a2(E)



BAR b1(E)

ONE APPROACH
 BILL OF MATERIAL

Bar	No.	Size	Length	Shape
a(E)	25	#4	22'-2"	—
a1(E)	46	#5	22'-2"	—
a2(E)	25	#4	18'-7"	—
a3(E)	46	#5	18'-2"	—
b(E)	36	#5	29'-8"	—
b1(E)	98	#9	29'-9"	—
w(E)	82	#4	9'-8"	—
w1(E)	40	#5	22'-2"	—
w1(E)	40	#5	18'-2"	—
Approach Slab Removal		Sq. Yd.	267	
Concrete Structures		Cu. Yd.	12.7	
Concrete Superstructure		Cu. Yd.	61.0	
Reinforcement Bars, Epoxy Coated		Pound	15,860	
Bar Splicers		Each	111	
Bridge Approach Shoulder Removal		Sq. Yd.	23	

FILE NAME = 0528052-64E97-23-S-Appr-118
 PLOT DATE = 3/29/2010
 PLOT SCALE = 5/8" = 1' IN.

CHRISTIAN ROBE & ASSOCIATES, INC.
 ENGINEERS-PLANNERS-SURVEYORS
 211 WEST WACKER DRIVE
 CHICAGO, ILLINOIS 60606
 PHONE: (312)372-2023 FAX: (312)372-5274

DESIGNED - B.N.S./J.C.N.
 DRAWN - D.L./F.M.
 CHECKED - B.N.S./J.C.N.
 DATE - MARCH, 2010

REVISED -
 REVISED -
 REVISED -
 REVISED -

STATE OF ILLINOIS
 DEPARTMENT OF TRANSPORTATION

SOUTH APPROACH SLAB REPAIR-II
 NORTHBOUND STRUCTURE
 I-39 OVER U.S. RTE. 30

S.N. 052-0053

SCALE: SHEET NO. S23 OF S28 SHEETS STA. TO STA. F.A.I. RTE. 39 SECTION (103-1, 103-2)RS COUNTY LEE TOTAL SHEETS 313 SHEET NO. 158 CONTRACT NO. 64E97 FED. ROAD DIST. NO. ILLINOIS FED. AID PROJECT