

STANDARD BAR SPLICER ASSEMBLY

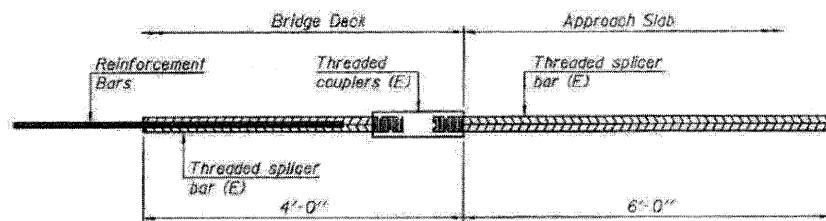
Bar size to be spliced	Minimum Lap Lengths			
	Table 1	Table 2	Table 3	Table 4
3, 4	1'-5"	1'-11"	2'-1"	2'-4"
5	1'-9"	2'-5"	2'-7"	2'-11"
6	2'-1"	2'-11"	3'-1"	3'-5"
7	2'-9"	3'-10"	4'-2"	4'-8"
8	3'-8"	5'-1"	5'-5"	6'-2"
9	4'-7"	6'-5"	6'-10"	7'-9"

Table 1: Black bar, O.B Class C
 Table 2: Black bar, Top bar lap, O.B Class C
 Table 3: Epoxy bar, O.B Class C
 Table 4: Epoxy bar, Top bar lap, O.B Class C

Threaded splicer bar length = min. lap length + 1 1/2" + thread length

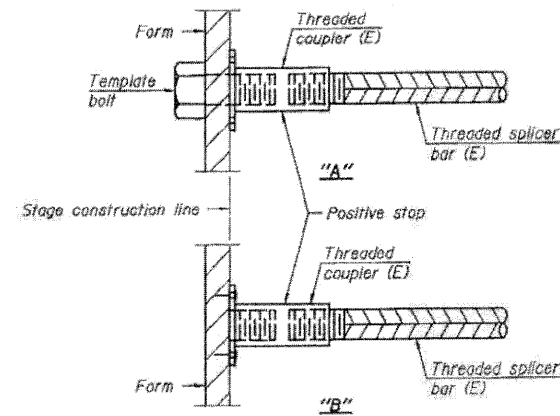
* Epoxy not required on Bar Splicer Assembly components used in conjunction with black bars.

Location	Bar size	No. assemblies required	Table for minimum lap length
Joint Reconstruction at S. Abut. SB Structure	#5	11	4
Joint Reconstruction at N. Abut. SB Structure	#5	11	4
Joint Reconstruction at S. Abut. NB Structure	#5	11	4
Joint Reconstruction at N. Abut. NB Structure	#5	11	4
South Approach Slab - SB Structure	#4	25	4
South Approach Slab - SB Structure	#5	46	3
South Approach Footing - SB Structure	#5	40	3
North Approach Slab - SB Structure	#4	25	4
North Approach Slab - SB Structure	#5	46	3
North Approach Footing - SB Structure	#5	40	3
South Approach Slab - NB Structure	#4	25	4
South Approach Slab - NB Structure	#5	46	3
South Approach Footing - NB Structure	#5	40	3
North Approach Slab - NB Structure	#4	25	4
North Approach Slab - NB Structure	#5	46	3
North Approach Footing - NB Structure	#5	40	3
Total		488	



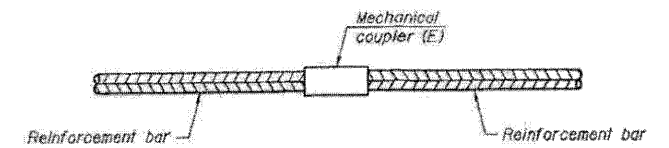
BAR SPLICER ASSEMBLY FOR #5 BAR ON INTEGRAL OR SEMI-INTEGRAL ABUTMENTS

No. required = -



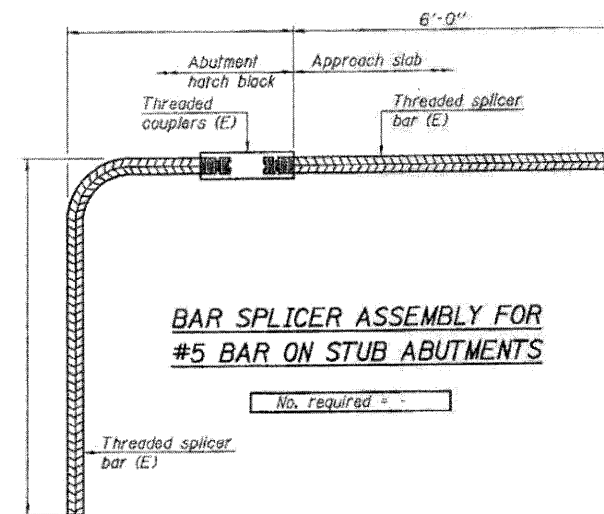
INSTALLATION AND SETTING METHODS

"A": Set bar splicer assembly by means of a template bolt.
 "B": Set bar splicer assembly by nailing to wood forms or cementing to steel forms.
 (E): Indicates epoxy coating.



STANDARD MECHANICAL SPLICER

Location	Bar size	No. assemblies required



BAR SPLICER ASSEMBLY FOR #5 BAR ON STUB ABUTMENTS

No. required = -

NOTES

Splicer bars shall be deformed with threaded ends and have a minimum 60 ksi yield strength.
 All reinforcement shall be lapped and tied to the splicer bars.
 Bar splicer assemblies shall be epoxy coated according to the requirements for reinforcement bars. See Section 508 of the Standard Specifications.
 See special provision for Mechanical Splicers.
 See approved list of bar splicer assemblies and mechanical splicers for alternatives.

**BAR SPLICER ASSEMBLY AND MECHANICAL SPLICER DETAILS
 STRUCTURE NO'S. 052-0052 (SB) & 052-0053 (NB)**

BSD-1 11-1-09

FILE NAME: 0520052-64E97-26-bar-spl.dgn
 PLOT DATE: 4/9/2010
 PLOT SCALE: 50.0000 X 1 IN.

CHRISTIAN ROGE & ASSOCIATES, INC.
 ENGINEERS-PLANNERS-SURVEYORS
 211 WEST WACKER DRIVE
 CHICAGO, ILLINOIS 60606
 PHONE: (312)372-2023 FAX: (312)372-5224

DESIGNED - B.N.S./J.C.N.
 DRAWN - D.L./F.M.
 CHECKED - B.N.S./J.C.N.
 DATE - MARCH, 2010

REVISED -
 REVISED -
 REVISED -
 REVISED -

**STATE OF ILLINOIS
 DEPARTMENT OF TRANSPORTATION**

**BAR SPLICER ASSEMBLY AND MECHANICAL SPLICER DETAILS
 SOUTHBOUND & NORTHBOUND STRUCTURES S.N. 052-0052
 I-39 OVER U.S. RTE. 30 S.N. 052-0053**

SCALE: SHEET NO. 526 OF 528 SHEETS STA. TO STA.

F.A.J. RTE. 39	SECTION 103-1, 103-2(RS)	COUNTY LEE	TOTAL SHEETS 313	SHEET NO. 161
CONTRACT NO. 64E97			ILLINOIS FED. AID PROJECT	