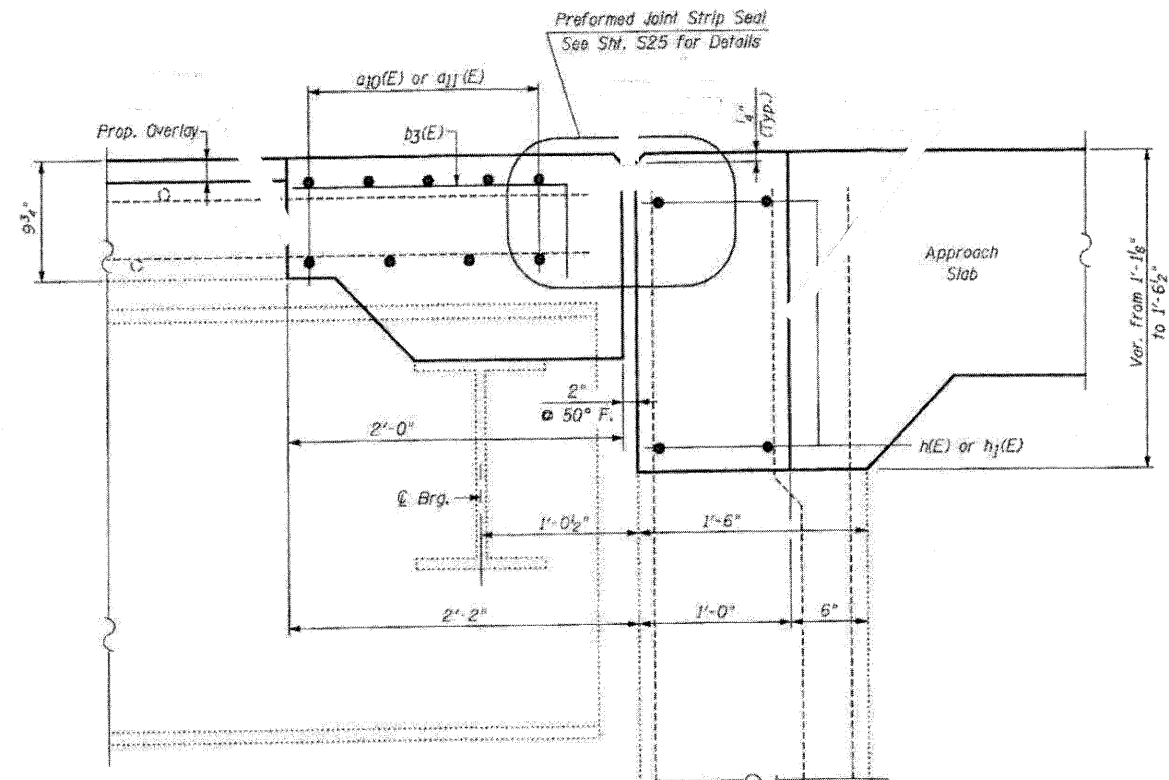


**EXISTING**  
**SECTION B-B**  
**SOUTHBOUND STRUCTURE-NORTH ABUTMENT**

**LEGEND:**  
 Concrete Removal



**PROPOSED**  
**SECTION B-B**  
**SOUTHBOUND STRUCTURE-NORTH ABUTMENT**

**NOTE:**  
 For Bar Splicer Assembly Details, See Sht. S24

FILE NAME: 052004B-64E97-08-N-Abut-SB  
 PLOT DATE: 3/29/2010  
 PLOT SCALE: 50.0000' / 1"

**CHRISTIAN ROSE & ASSOCIATES, INC.**  
 ENGINEERS-PLANNERS-SURVEYORS  
 211 WEST WACKER DRIVE  
 CHICAGO, ILLINOIS 60606  
 PHONE: (312)372-2023 FAX: (312)372-5274

DESIGNED - B.N.S./J.C.N.	REVISED -
DRAWN - D.L./F.M.	REVISED -
CHECKED - B.N.S./J.C.N.	REVISED -
DATE - MARCH, 2010	REVISED -

**STATE OF ILLINOIS**  
**DEPARTMENT OF TRANSPORTATION**

**JOINT RECONSTRUCTION DETAILS AT NORTH ABUTMENT**  
**SOUTHBOUND STRUCTURE**  
**I-39 OVER STEWARD CREEK**  
**S.N. 052-0048**

SCALE: SHEET NO. 59 OF 526 SHEETS STA. TO STA.

F.A.I. RTE. 39	SECTION 103-1, 103-21RS	COUNTY LEE	TOTAL SHEETS 313	SHEET NO. 171
FED. ROAD DIST. NO. ILLINOIS FED. AID PROJECT			CONTRACT NO. 64E97	