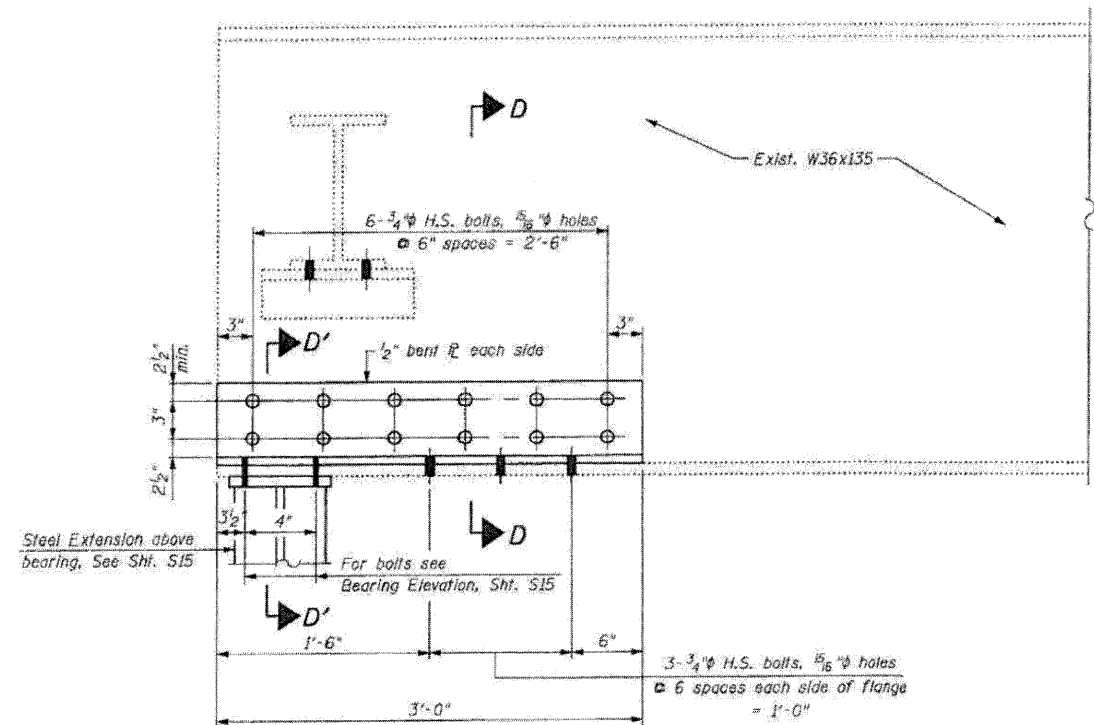


**END OF BEAM REPAIR - 5 FEET**  
 (See framing plan, Sht. S13 for locations)  
 (3 thus)



**END OF BEAM REPAIR - 3 FEET**  
 (See framing plan, Sht. S13 for locations)  
 (3 thus)

**BILL OF MATERIAL**

ITEM	UNIT	QUANTITY
Furnishing and Erecting Structural Steel	Pound	3,040

FILE NAME = B020848-64E97-14-xtl-repair-3.dwg  
 PLOT DATE = 0/29/2010  
 PLOT SCALE = 5/8" = 1' - 0"

**CHRISTIAN-ROGE & ASSOCIATES, INC.**  
 ENGINEERS-PLANNERS-SURVEYORS  
 211 WEST WACKER DRIVE  
 CHICAGO, ILLINOIS 60606  
 PHONE: (312)372-2023 FAX: (312)372-5274

DESIGNED	- B.N.S./J.C.N.	REVISED	-
DRAWN	- D.L./F.M.	REVISED	-
CHECKED	- B.N.S./J.C.N.	REVISED	-
DATE	- MARCH, 2010	REVISED	-

**STATE OF ILLINOIS  
 DEPARTMENT OF TRANSPORTATION**

**STRUCTURAL STEEL REPAIRS - II  
 SOUTHBOUND & NORTHBOUND STRUCTURES S.N. 052-0048  
 I-39 OVER STEWARD CREEK S.N. 052-0049**

SCALE: SHEET NO. S14 OF 526 SHEETS STA. TO STA.

F.A.I. RTE.	SECTION	COUNTY	TOTAL SHEETS	SHEET NO.
59	1103-1, 103-2/RS	LEE	313	177
FED. ROAD DIST. NO.			ILLINOIS FED. AID PROJECT	
			CONTRACT NO. 64E97	