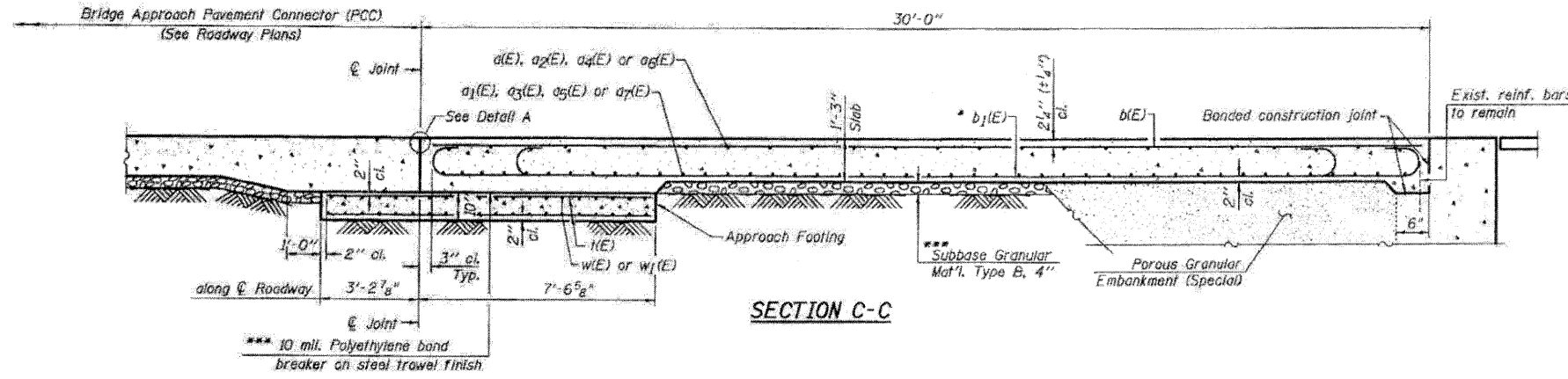
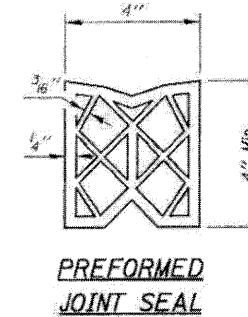
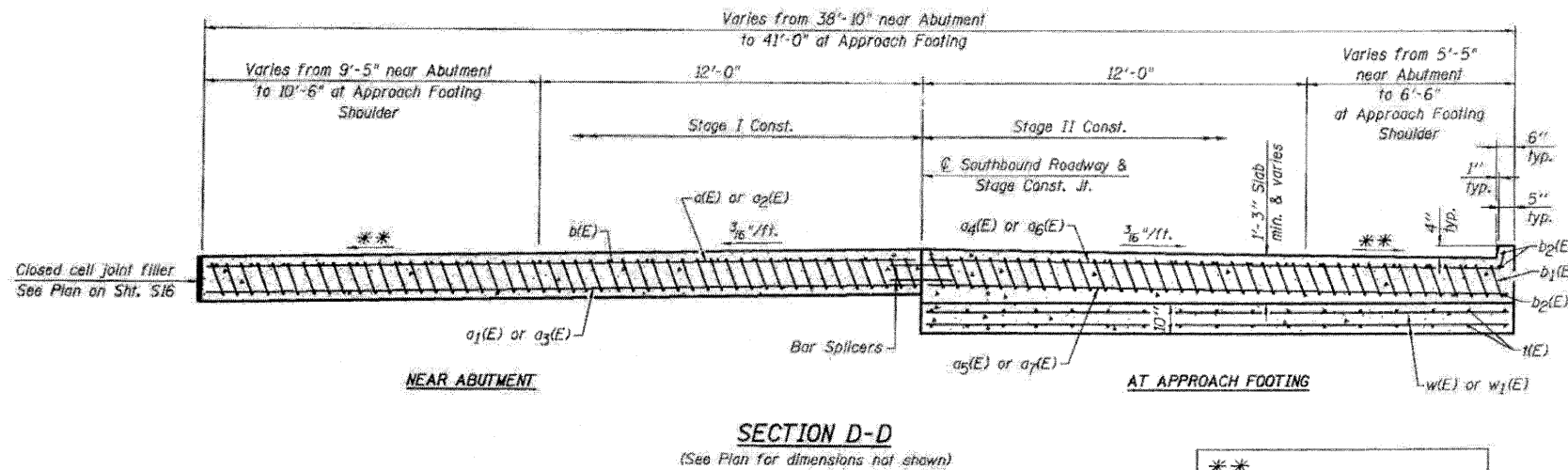
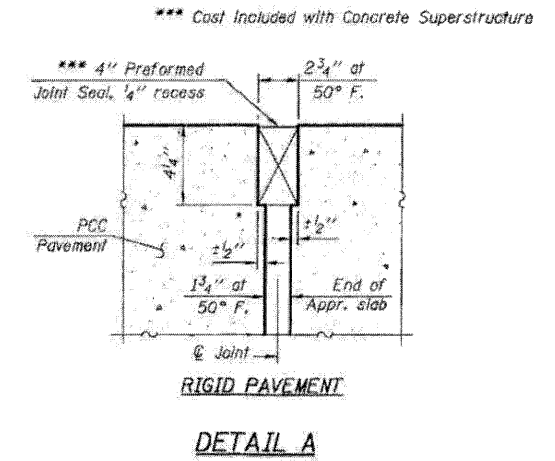


Notes:
 Approach slab and parapet concrete shall be paid for as Concrete Superstructure.
 Approach footing concrete shall be paid for as Concrete Structures.
 Reinforcement shall be paid for as Reinforcement Bars, Epoxy Coated.
 The approach footing maximum applied service bearing pressure (Gmax) = 2.0 ksf.
 For bar splicer details, see sheet S24.
 Cost of excavation for approach footing included with Concrete Structures.

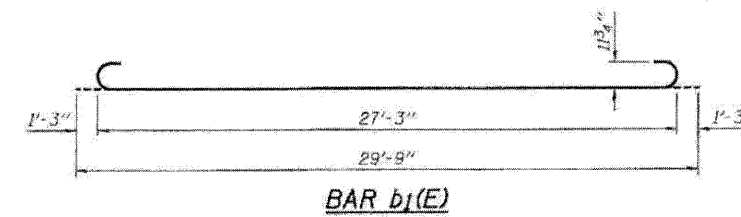
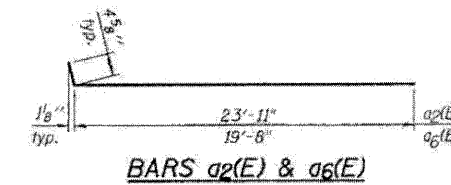


* Till #9b1(E) bars as required to maintain clearance.
 *** Cast included with Concrete Superstructure.



ONE APPROACH
 BILL OF MATERIAL

Bar	No.	Size	Length	Shape
a1(E)	7	#4	22'-9"	
a2(E)	14	#5	22'-9"	
a3(E)	18	#4	24'-4"	
a4(E)	32	#5	23'-11"	
a5(E)	7	#4	18'-5"	
a6(E)	14	#5	18'-5"	
a7(E)	18	#4	20'-1"	
a7(E)	32	#5	19'-8"	
b1(E)	34	#5	29'-8"	
b2(E)	98	#9	29'-9"	
b2(E)	6	#4	18'-2"	
w(E)	84	#4	10'-5"	
w1(E)	40	#5	23'-11"	
w1(E)	40	#5	19'-8"	
Approach Slab Removal		Sq. Yd.	267	
Concrete Structures		Cu. Yd.	12.7	
Concrete Superstructure		Cu. Yd.	60.0	
Reinforcement Bars, Epoxy Coated		Pound	16,220	
Bar Splicers		Each	111	
Bridge Approach Shoulder Removal		Sq. Yd.	32	



STATE OF ILLINOIS
 DEPARTMENT OF TRANSPORTATION

SOUTH APPROACH SLAB REPAIR-II
 SOUTHBOUND STRUCTURE
 I-39 OVER STEWARD CREEK
 S.N. 052-0048

F.A.I. RTE.	SECTION	COUNTY	TOTAL SHEETS	SHEET NO.
39	103-1, 103-2/RS	LEE	313	160

CHRISTIAN-ROGE & ASSOCIATES, INC.
 ENGINEERS-PLANNERS-SURVEYORS
 211 WEST WACKER DRIVE
 CHICAGO, ILLINOIS 60606
 PHONE: (312)372-2923 FAX: (312)372-5274

DESIGNED - B.N.S./J.C.N.
 DRAWN - D.L./F.M.
 CHECKED - B.N.S./J.C.N.
 DATE - MARCH, 2010

REVISIONS:
 REVISION NO. 1: [Blank]
 REVISION NO. 2: [Blank]
 REVISION NO. 3: [Blank]

SCALE: SHEET NO. S17 OF 526 SHEETS STA. TO STA.

FED. ROAD DIST. NO. ILLINOIS FED. AID PROJECT CONTRACT NO. 64E97