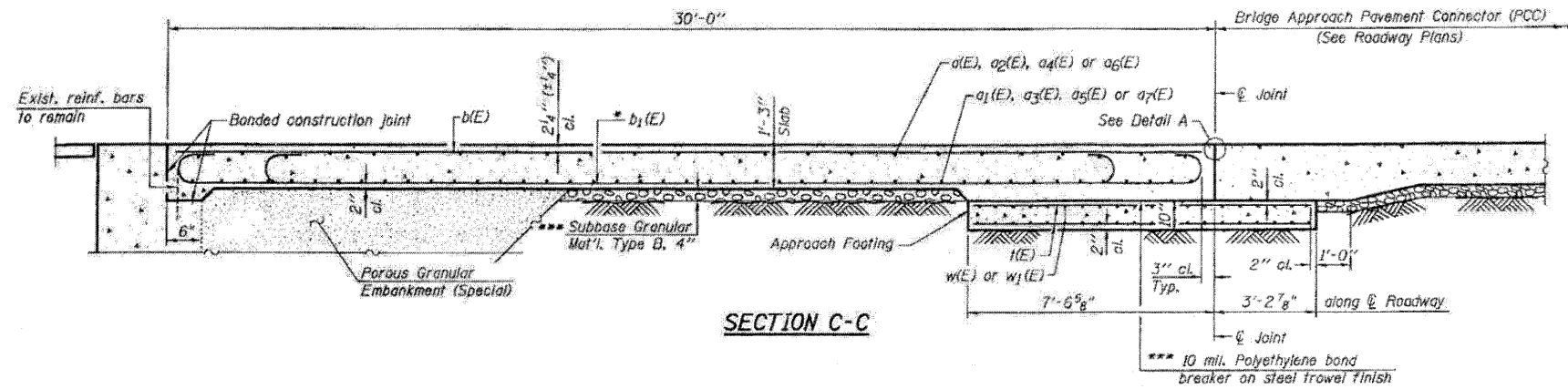
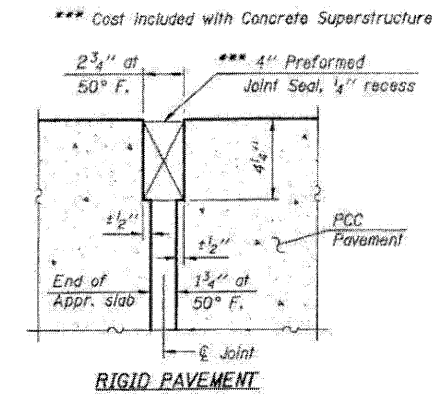


Notes:  
 Approach slab and parapet concrete shall be paid for as Concrete Superstructure.  
 Approach footing concrete shall be paid for as Concrete Structures.  
 Reinforcement shall be paid for as Reinforcement Bars, Epoxy Coated.  
 The approach footing maximum applied service bearing pressure ( $Q_{max}$ ) = 2.0 ksf.  
 For bar splicer details, see sheet S24.  
 Cost of excavation for approach footing included with Concrete Structures.

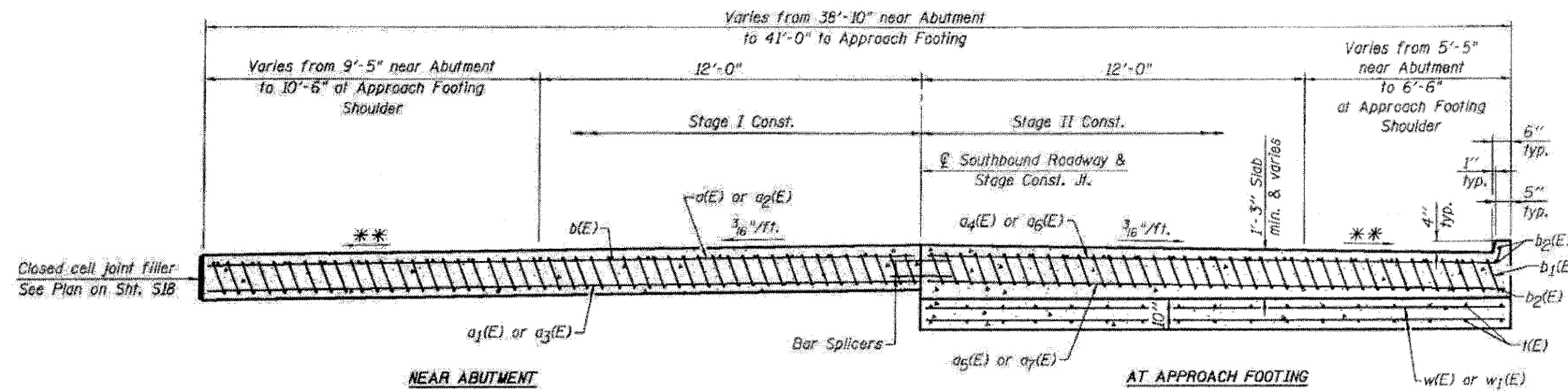


SECTION C-C

\* Tilt #9b1(E) bars as required to maintain clearance.  
 \*\*\* Cost included with Concrete Superstructure.



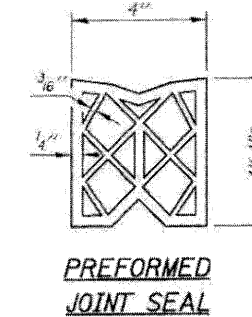
DETAIL A



SECTION D-D

(See Plan for dimensions not shown)

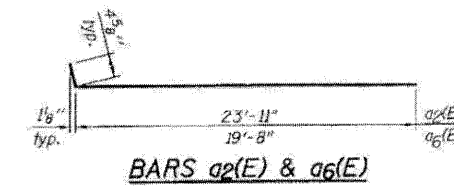
\*\* Varies from 2% at bridge to 4%



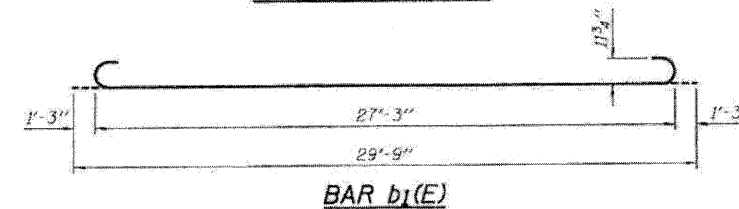
PREFORMED JOINT SEAL

ONE APPROACH BILL OF MATERIAL

Bar	No.	Size	Length	Shape
a1(E)	7	#4	22'-9"	
a2(E)	14	#5	22'-9"	
a3(E)	18	#4	24'-4"	
a4(E)	32	#5	23'-11"	
a5(E)	7	#4	18'-5"	
a6(E)	14	#5	18'-5"	
a7(E)	18	#4	20'-1"	
a7(E)	32	#5	19'-8"	
b1(E)	34	#5	29'-8"	
b1(E)	98	#9	29'-9"	
b2(E)	6	#4	18'-2"	
w(E)	84	#4	10'-5"	
w1(E)	40	#5	23'-11"	
w1(E)	40	#5	19'-8"	
Approach Slab Removal	Sq. Yd.	345		
Concrete Structures	Cu. Yd.	12.7		
Concrete Superstructure	Cu. Yd.	60.0		
Reinforcement Bars, Epoxy Coated	Pound	16,220		
Bar Splicers	Each	111		



BARS a2(E) & a6(E)



BAR b1(E)

FILE NAME = 0520048-04E97-19-N-Appr-SB-01.dwg  
 PLOT DATE = 3/29/2010  
 PLOT SCALE = 50.0000 1/16" = 1'-0"

**CHRISTIAN-ROGE & ASSOCIATES, INC.**  
 ENGINEERS-PLANNERS-SURVEYORS  
 211 WEST WACKER DRIVE  
 CHICAGO, ILLINOIS 60606  
 PHONE: (312)372-2023 FAX: (312)372-5274

DESIGNED - B.N.S./J.C.N. REVISED -  
 DRAWN - D.L./F.M. REVISED -  
 CHECKED - B.N.S./J.C.N. REVISED -  
 DATE - MARCH, 2010 REVISED -

STATE OF ILLINOIS  
 DEPARTMENT OF TRANSPORTATION

NORTH APPROACH SLAB REPAIR-II  
 SOUTHBOUND STRUCTURE  
 I-39 OVER STEWARD CREEK  
 S.N. 052-0048

F.A.I. RTE.	SECTION	COUNTY	TOTAL SHEETS	SHEET NO.
39	1103-1, 103-2RS	LEE	313	182
CONTRACT NO. 64E97				
FED. ROAD DIST. NO.		ILLINOIS FED. AID PROJECT		