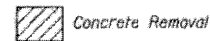


EXISTING

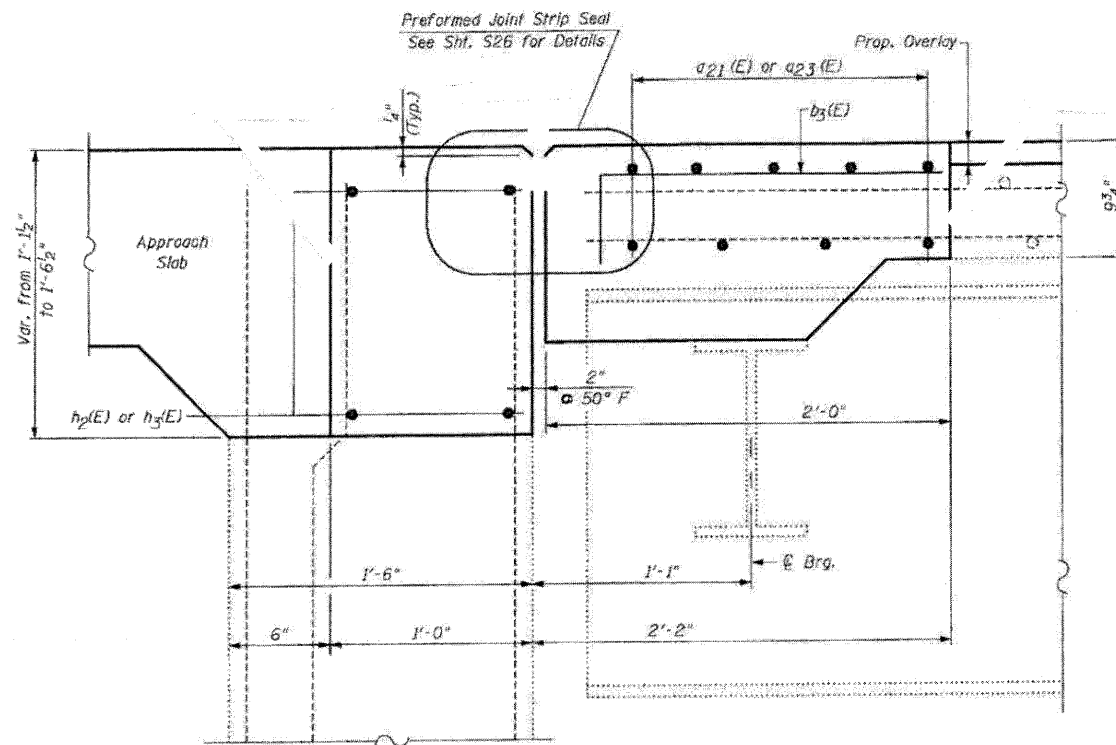
SECTION B-B

NORTHBOUND STRUCTURE-SOUTH ABUTMENT

**LEGEND:**



Concrete Removal



PROPOSED

SECTION B-B

NORTHBOUND STRUCTURE-SOUTH ABUTMENT

**NOTE:**

For Bar Splicer Assembly Details, See Sht. 525

FILE NAME: 0520046-64E97-10-S-Abut-NB-01.dwg  
 PLOT DATE: 3/29/2010  
 PLOT SCALE: 58.0000 1/16\"/>

**CHRISTIAN-ROGE & ASSOCIATES, INC.**  
 ENGINEERS-PLANNERS-SURVEYORS  
 211 WEST WACKER DRIVE  
 CHICAGO, ILLINOIS 60606  
 PHONE: (312)372-2023 FAX: (312)372-5274

DESIGNED - B.N.S./J.C.N.  
 DRAWN - D.L./F.M.  
 CHECKED - B.N.S./J.C.N.  
 DATE - MARCH, 2010

REVISED -  
 REVISED -  
 REVISED -  
 REVISED -

**STATE OF ILLINOIS**  
**DEPARTMENT OF TRANSPORTATION**

**JOINT RECONSTRUCTION DETAILS AT SOUTH ABUTMENT**  
**NORTHBOUND STRUCTURE**  
**I-39 OVER B.N. R.R.**  
**S.N. 052-0047**

SCALE: SHEET NO. 510 OF 527 SHEETS STA. TO STA.

|   |                         |                    |                  |               |
|---|-------------------------|--------------------|------------------|---------------|
| F.A.I. RTE. 39                                | SECTION 103-1, 103-21RS | COUNTY LEE         | TOTAL SHEETS 313 | SHEET NO. 199 |
| FED. ROAD DIST. NO. ILLINOIS FED. AID PROJECT |                         | CONTRACT NO. 64E97 |                  |               |