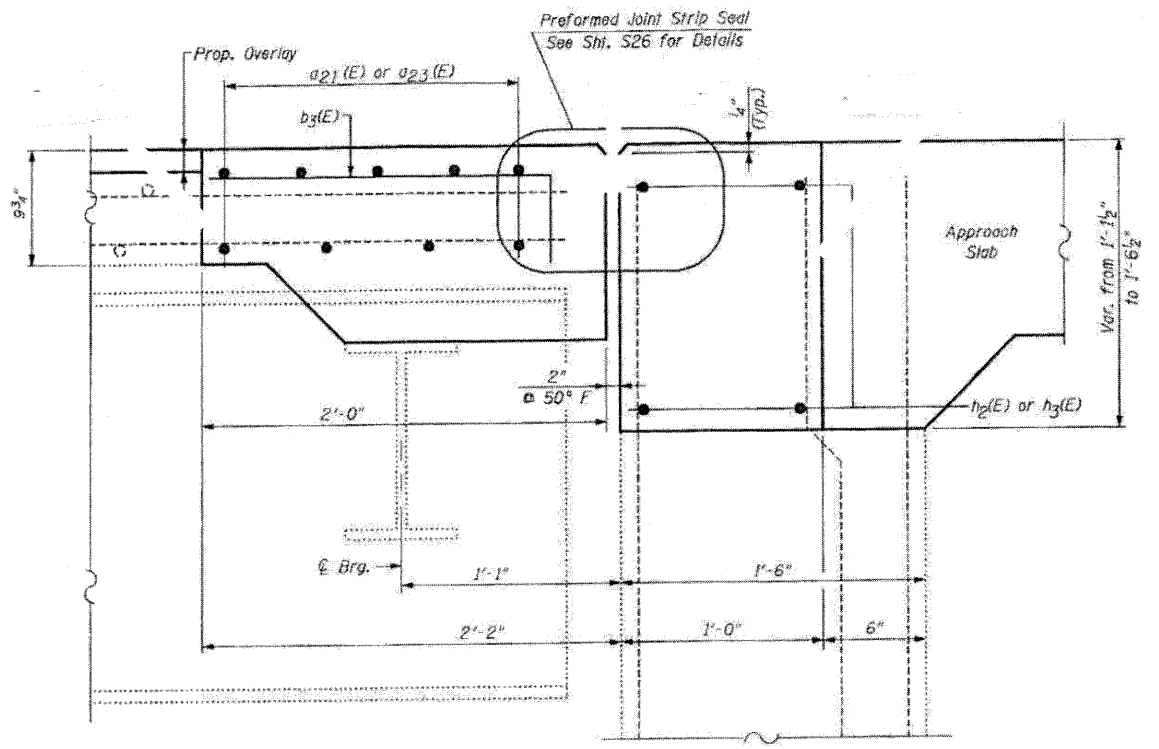


EXISTING
SECTION B-B

NORTHBOUND STRUCTURE-NORTH ABUTMENT



PROPOSED
SECTION B-B

NORTHBOUND STRUCTURE-NORTH ABUTMENT

LEGEND:
 Concrete Removal

NOTE:
For Bar Splicer Assembly Details, See Sht. S25

| | | | | | | | | | | | |
|--|---|--------------------------|-----------|---|---|-----------------------------|----------------|---|--------------------|------------------|---------------|
| FILE NAME = R520046-64E97-12-N-Abut-NB-01.dwg PLOT DATE = 3/23/2010 PLOT SCALE = 50.0000 1/2 IN. | CHRISTIAN-ROGE & ASSOCIATES, INC. ENGINEERS-PLANNERS-SURVEYORS 211 WEST WACKER DRIVE CHICAGO, ILLINOIS 60606 PHONE: (312)372-2023 FAX: (312)372-5274 | DESIGNED - B.N.S./J.C.N. | REVISED - | STATE OF ILLINOIS DEPARTMENT OF TRANSPORTATION | JOINT RECONSTRUCTION DETAILS AT NORTH ABUTMENT NORTHBOUND STRUCTURE I-39 OVER B.N.R.R. S.N. 052-0047 | | F.A.I. RTE. 39 | SECTION (103-1, 103-2)RS | COUNTY LEE | TOTAL SHEETS 313 | SHEET NO. 201 |
| | | DRAWN - D.L./F.M. | REVISED - | | SCALE: 1" = 1'-0" | SHEET NO. S12 OF S27 SHEETS | STA. TO STA. | FED. ROAD DIST. NO. ILLINOIS FED. AID PROJECT | CONTRACT NO. 64E97 | | |
| | | CHECKED - B.N.S./J.C.N. | REVISED - | | | | | | | | |
| | | DATE - MARCH, 2010 | REVISED - | | | | | | | | |