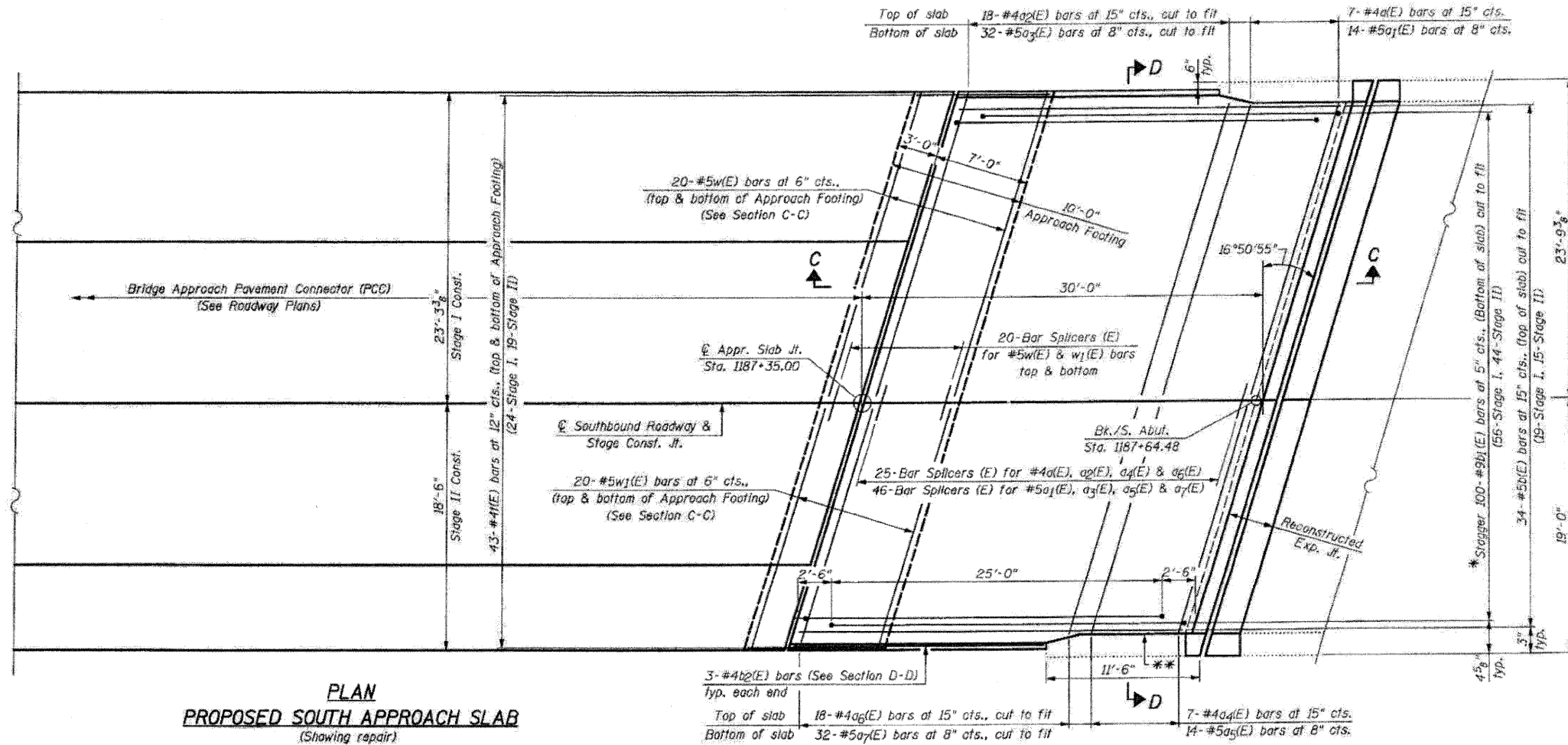


PLAN
EXISTING SOUTH APPROACH SLAB
(Showing removal)



PLAN
PROPOSED SOUTH APPROACH SLAB
(Showing repair)

- LEGEND:**
- Approach Slab Removal
 - Joint Reconstruction
 - Bridge Approach Shoulder Removal

NOTE:
For additional Pre-stage work and Stage I & Stage II shoulder & overlay work outside of approach slabs, see Roadway Plans.

- * Tilt #9b1(E) bars as required to maintain clearance.
- ** Closed cell joint filler according to Article 105.10B of the Std. Specifications: full depth of slab, full length of parapet. Typ. each parapet.