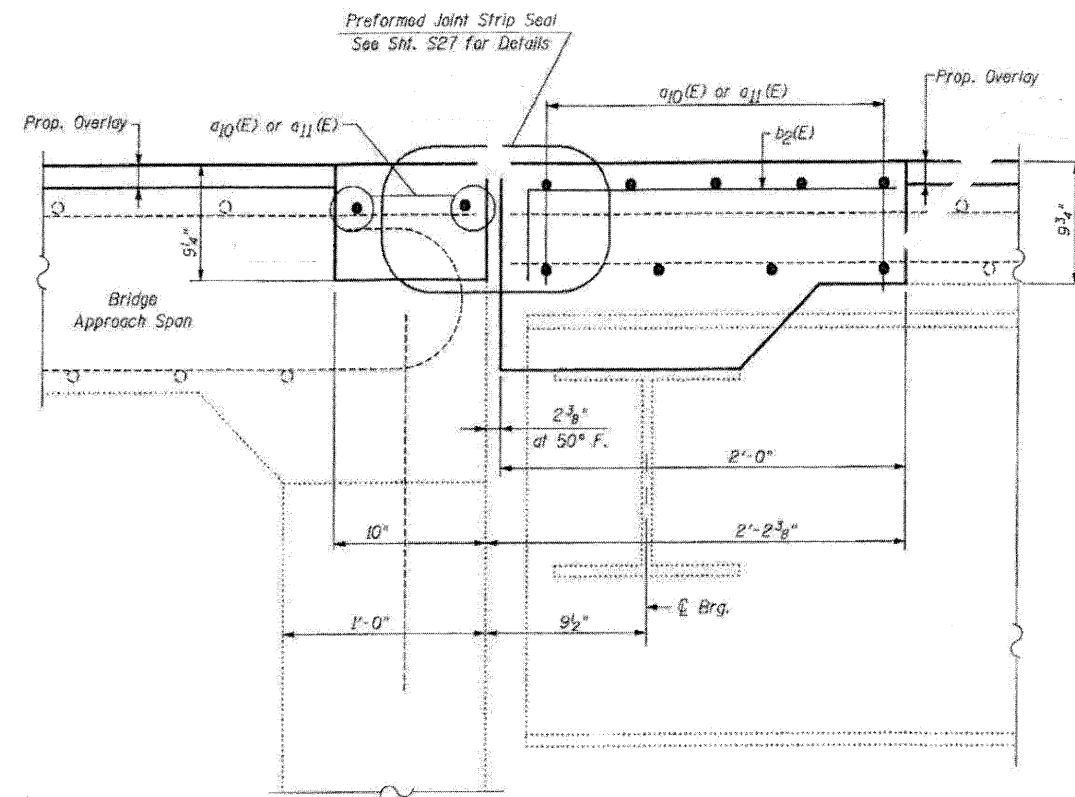


EXISTING
SECTION B-B

SOUTHBOUND ROADWAY-SOUTH ABUTMENT



PROPOSED
SECTION B-B

SOUTHBOUND ROADWAY-SOUTH ABUTMENT

LEGEND:
 Concrete Removal

NOTE:
For Bar Splicer Assembly Details, See Sht. S26

FILE NAME = 0520044-64E97-06-S-Abut-SB-detailed
 PLOT DATE = 3/29/2010
 PLOT SCALE = 5/8" = 1'-0"

CHRISTIAN-ROGE & ASSOCIATES, INC.
 ENGINEERS-PLANNERS-SURVEYORS
 211 WEST WACKER DRIVE
 CHICAGO, ILLINOIS 60606
 PHONE: (312)372-2023 FAX: (312)372-5274

DESIGNED - B.N.S./J.C.N.
 DRAWN - D.L./F.M.
 CHECKED - B.N.S./J.C.N.
 DATE - MARCH, 2010

REVISED -
 REVISED -
 REVISED -
 REVISED -

STATE OF ILLINOIS
DEPARTMENT OF TRANSPORTATION

JOINT RECONSTRUCTION DETAILS AT SOUTH ABUTMENT
SOUTHBOUND STRUCTURE
I-39 OVER PERRY ROAD
S.N. 052-0044

SCALE: SHEET NO. 56 OF 528 SHEETS STA. TO STA.

F.A.I. RTE.	SECTION	COUNTY	TOTAL SHEETS	SHEET NO.
39	1103-1, 103-2/RS	LEE	313	222
CONTRACT NO. 64E97				