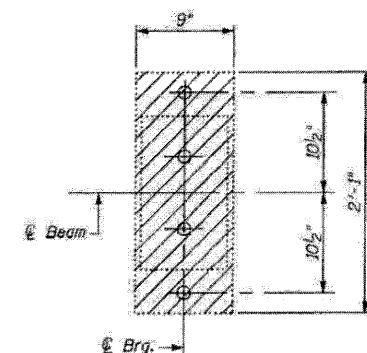


ELEVATION

* Burn existing anchor bolts flush with existing concrete surface. Grind existing anchor bolts smooth and seal with epoxy. Cost included with "Jack and Remove Existing Bearings"



PLAN

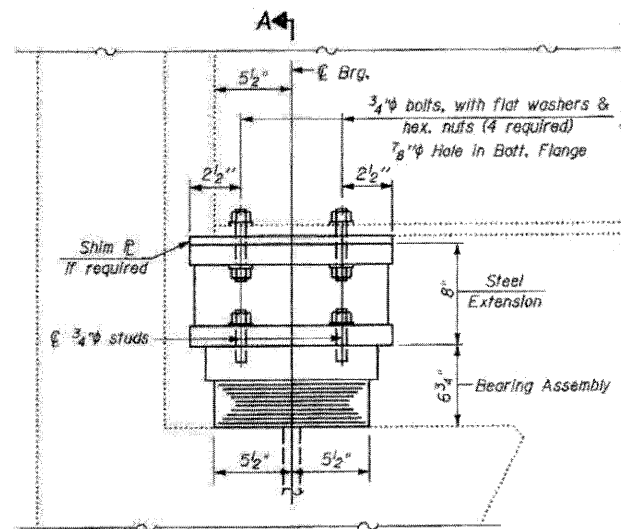
EXISTING BEARING REMOVAL AT NORTH ABUTMENT

INTERIOR GIRDER REACTION TABLE

		North Abutment (SB)
R _D	(k)	72.97
R _L	(k)	46.21
R _{Imp.}	(k)	9.67
R (Total)	(k)	128.85

INTERIOR GIRDER REACTION TABLE

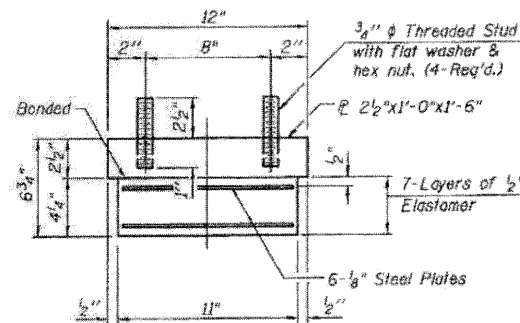
		North Abutment (NB)
R _D	(k)	70.3
R _L	(k)	45.1
R _{Imp.}	(k)	9.4
R (Total)	(k)	124.8



ELEVATION

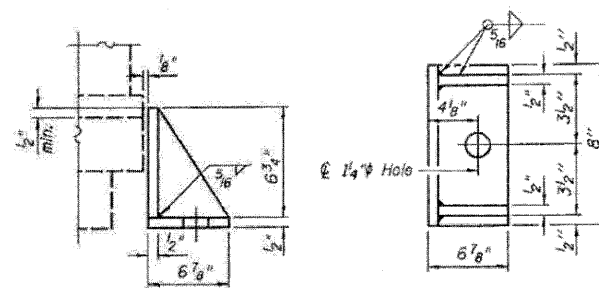
1/4 inch x 12 inch Anchor bolts (ASTM F1554 Grade 36) with 2 1/4 inch x 2 1/4 inch x 5/16 inch washer under nut

PROPOSED TYPE I ELASTOMERIC EXP. BRG. AT NORTH ABUTMENT (13 required)



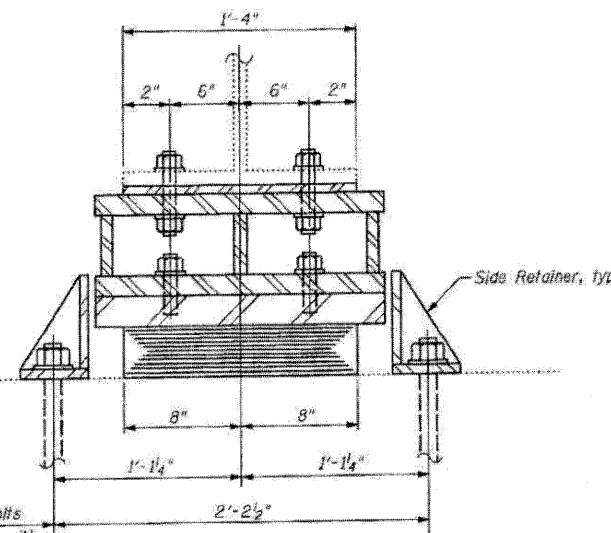
BEARING ASSEMBLY

Note: Shim plates shall not be placed under Bearing Assembly.

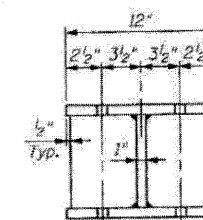


SIDE RETAINER

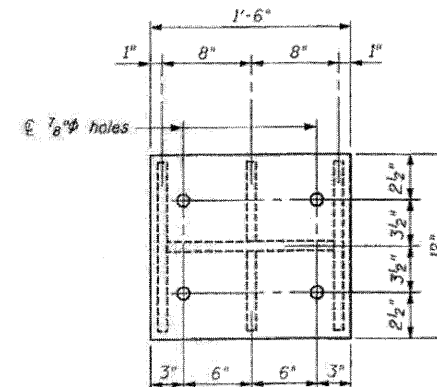
Equivalent rolled angle with stiffeners will be allowed in lieu of welded plates.



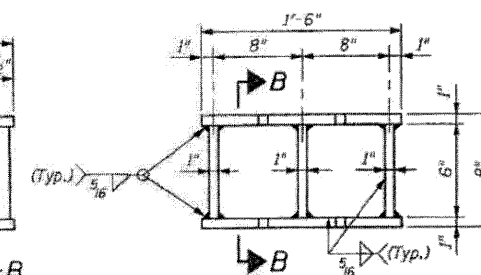
SECTION A-A



SECTION B-B



TOP & BOTTOM PLATE PLAN



STEEL EXTENSION ELEVATION

STEEL EXTENSION DETAIL (13 required)

Notes:

Anchor bolts shall be ASTM F1554 all-thread (or an Engineer approved alternate material) of the grade(s) and diameter(s) specified. ASTM A307 Grade C anchor bolts may be used in lieu of ASTM F1554 Grade 36 (F_y=36ksi). The corresponding specified grade of AASHTO M314 anchor bolts may be used in lieu of ASTM F1554.

Anchor bolts for side retainers may be cast in place or installed in holes drilled before or after members are in place. Drilled and set anchor bolts shall be installed according to Article 521.06 of the Standard Specifications. Side retainers and other steel members required for the bearing assembly shall be included in the cost of Elastomeric Bearing Assembly, Type I.

Prior to ordering any materials, the Contractor shall verify, in the field, all bearing height and shim thickness dimensions.

Min. Jack capacity = 90 tons at each bearing location. Steel extensions, shim plates and connection bolts are included with Furnishing and Erecting Structural Steel.

Two 1/2 inch adjusting shims shall be provided for each bearing in addition to all other plates or shims and placed as shown on bearing details.

BILL OF MATERIAL

Item	Unit	Total
Elastomeric Bearing Assembly, Type I	Each	13
Anchor Bolts, 1"	Each	26
Furnishing and Erecting Structural Steel	Pound	2,790
Jack and Remove Existing Bearings	Each	13

BEARING DETAILS STRUCTURE NO'S. 052-0044 (SB) & 052-0045 (NB)

I-2E-1 11-1-09

FILE NAME: A0520044-04E97-10-brg-0000-10-11
PLOT DATE: 3/29/2010
PLOT SCALE: 5/8" = 1'-0"

CHRISTIAN ROGGE & ASSOCIATES, INC.
ENGINEERS-PLANNERS-SURVEYORS
211 WEST WACKER DRIVE
CHICAGO, ILLINOIS 60606
PHONE: (312)372-2023 FAX: (312)372-5274

DESIGNED - B.N.S./J.C.N.
DRAWN - D.L./F.M.
CHECKED - B.N.S./J.C.N.
DATE - MARCH, 2010

REVISED -
REVISED -
REVISED -
REVISED -

STATE OF ILLINOIS
DEPARTMENT OF TRANSPORTATION

ELASTOMERIC BEARING ASSEMBLY, TYPE I - NORTH ABUTMENT
SOUTHBOUND & NORTHBOUND STRUCTURES S.N. 052-0044
I-39 OVER PERRY ROAD S.N. 052-0045

F.A.I. RTE.	SECTION	COUNTY	TOTAL SHEETS	SHEET NO.
39	(103-1, 103-2)RS	LEE	313	231

CONTRACT NO. 64E97
FED. ROAD DIST. NO. ILLINOIS FED. AID PROJECT