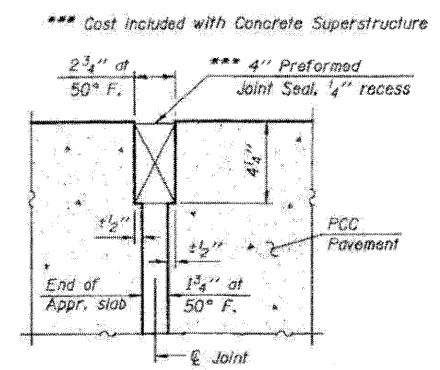
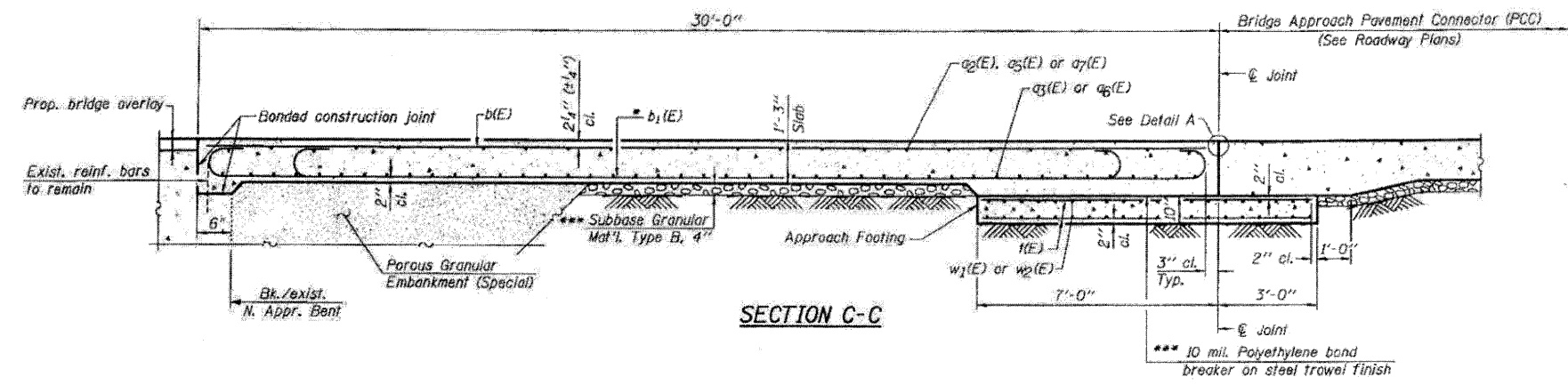
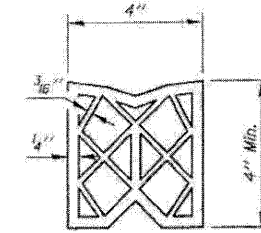
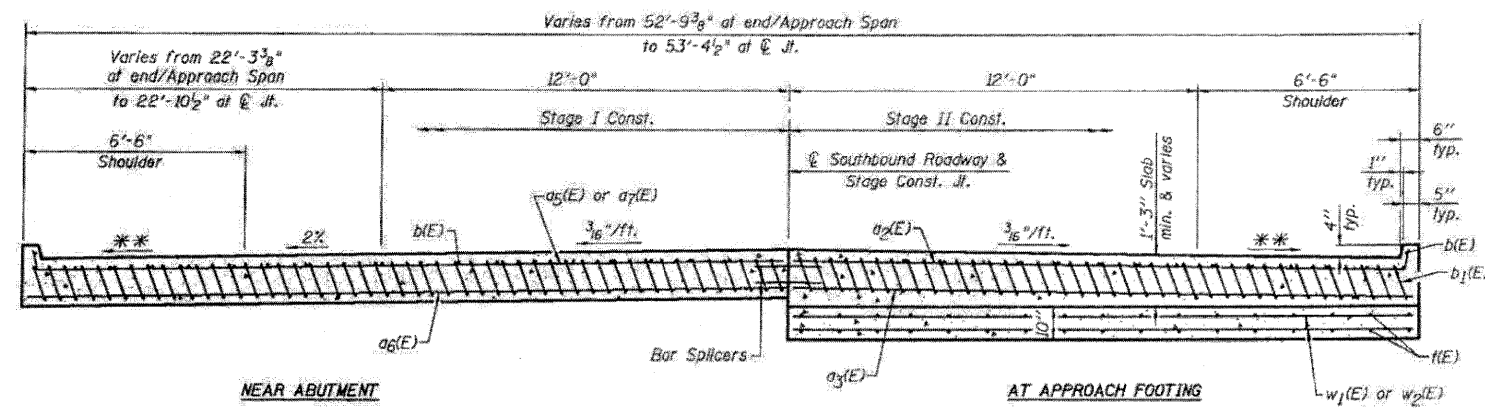


Notes:  
 Approach slab and parapet concrete shall be paid for as Concrete Superstructure.  
 Approach footing concrete shall be paid for as Concrete Structures.  
 Reinforcement shall be paid for as Reinforcement Bars, Epoxy Coated.  
 The approach footing maximum applied service bearing pressure ( $Q_{max}$ ) = 2.0 ksf.  
 For bar splicer details, see sheet S25.  
 Cost of excavation for approach footing included with Concrete Structures.  
 Bars indicated thus 46x2-#5 etc., indicates 46 lines of Bars with 2 lengths per line.

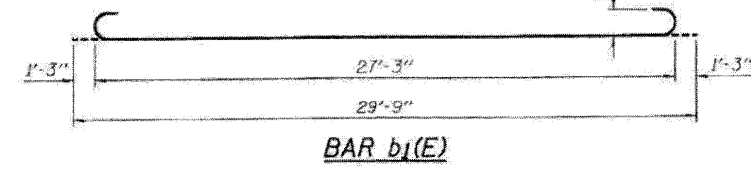
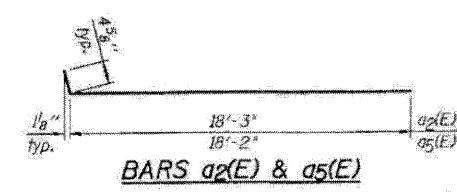


\* Tilt #9b<sub>1</sub>(E) bars as required to maintain clearance.  
 \*\*\* Cost included with Concrete Superstructure.



**ONE APPROACH  
 BILL OF MATERIAL**

Bar	No.	Size	Length	Shape
a <sub>2</sub> (E)	25	#4	18'-7"	—
a <sub>3</sub> (E)	46	#5	18'-2"	—
a <sub>5</sub> (E)	25	#4	18'-8"	—
a <sub>6</sub> (E)	92	#5	18'-5"	—
a <sub>7</sub> (E)	25	#4	18'-3"	—
b <sub>1</sub> (E)	45	#5	29'-8"	—
b <sub>1</sub> (E)	126	#9	29'-9"	—
f(E)	108	#4	9'-8"	—
w <sub>1</sub> (E)	40	#5	18'-2"	—
w <sub>2</sub> (E)	80	#5	18'-3"	—
Approach Slab Removal	Sq. Yd.		45.4	
Concrete Structures	Cu. Yd.		16.5	
Concrete Superstructure	Cu. Yd.		78.9	
Reinforcement Bars, Epoxy Coated	Pound		20,680	
Bar Splicers	Each		111	
Bridge Approach Shoulder Removal	Sq. Yd.		18	



**MIN. BAR LAP:**  
 #4 bars = 1'-8"  
 #5 bars = 2'-2"