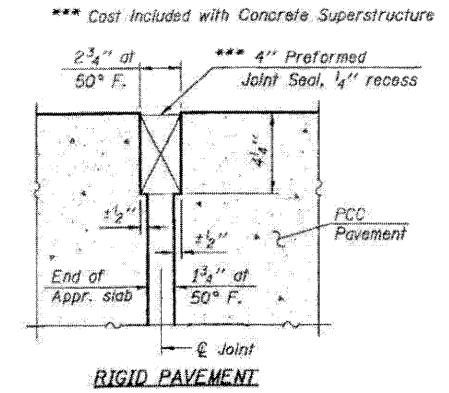
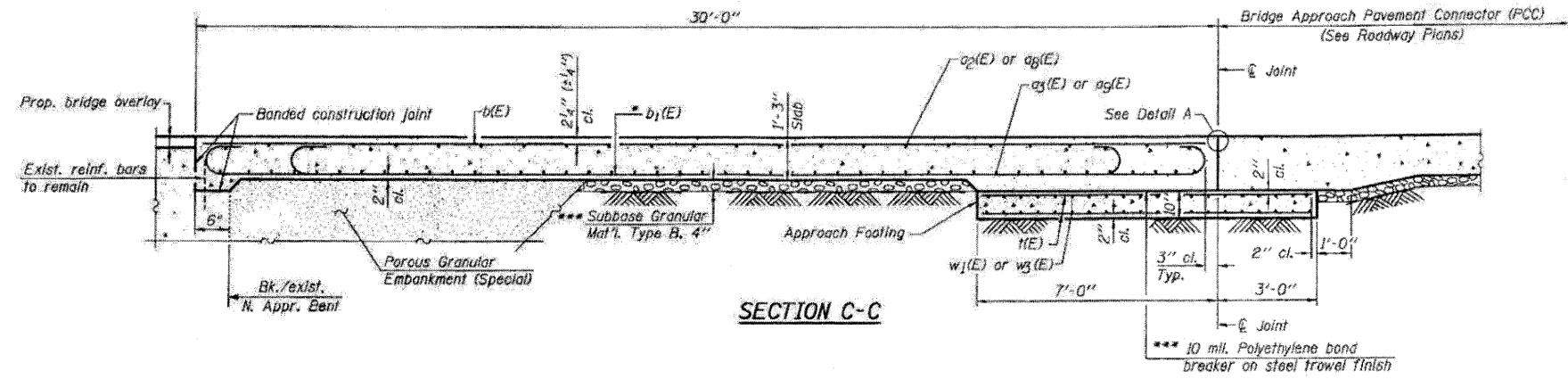
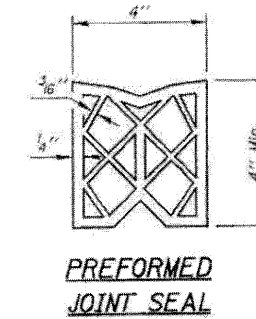
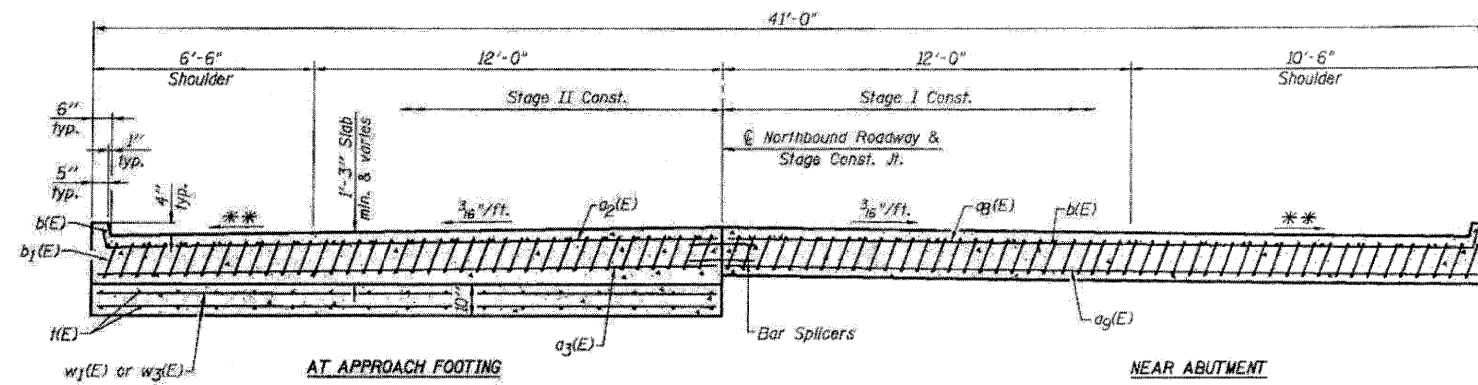


Notes:
 Approach slab and parapet concrete shall be paid for as Concrete Superstructure.
 Approach footing concrete shall be paid for as Concrete Structures.
 Reinforcement shall be paid for as Reinforcement Bars, Epoxy Coated.
 The approach footing maximum applied service bearing pressure (Qmax) = 2.0 ksf.
 For bar splicer details, see sheet S26.
 Cost of excavation for approach footing included with Concrete Structures.



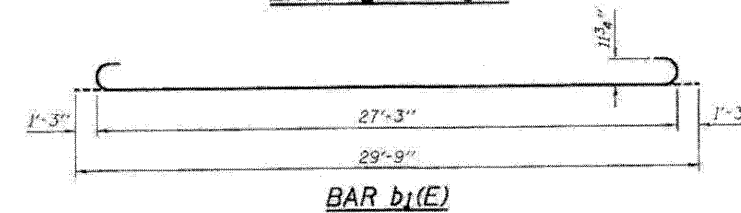
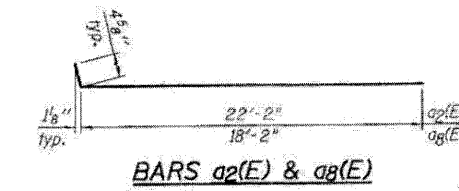
* Tilt #9b₁(E) bars as required to maintain clearance.
 *** Cost Included with Concrete Superstructure.



ONE APPROACH
 BILL OF MATERIAL

Bar	No.	Size	Length	Shape
a ₂ (E)	25	#4	18'-7"	—
a ₃ (E)	46	#5	18'-2"	—
a ₈ (E)	25	#4	22'-7"	—
a ₉ (E)	46	#5	22'-2"	—
b(E)	36	#5	29'-8"	—
b ₁ (E)	98	#9	29'-9"	—
l(E)	82	#4	9'-8"	—
w ₁ (E)	40	#5	18'-2"	—
w ₃ (E)	40	#5	22'-2"	—
Approach Slab Removal		Sq. Yd.	267	
Concrete Structures		Cu. Yd.	12.7	
Concrete Superstructure		Cu. Yd.	61.0	
Reinforcement Bars, Epoxy Coated		Pound	15,860	
Bar Splicers		Each	111	
Bridge Approach Shoulder Removal		Sq. Yd.	24	

**
 Varies from 2X at bridge to 1X



FILE NAME: 0522844-64E97-25-N-Appr-NB
 PLOT DATE: 3/29/2010
 PLOT SCALE: 5/8" = 1'-0"

CHRISTIAN ROGE & ASSOCIATES, INC.
 ENGINEERS-PLANNERS-SURVEYORS
 271 WEST WACKER DRIVE
 CHICAGO, ILLINOIS 60606
 PHONE: (312)372-2023 FAX: (312)372-5274

DESIGNED - B.N.S./J.C.N. REVISED -
 DRAWN - D.L./F.M. REVISED -
 CHECKED - B.N.S./J.C.N. REVISED -
 DATE - MARCH, 2010 REVISED -

STATE OF ILLINOIS
 DEPARTMENT OF TRANSPORTATION

NORTH APPROACH SLAB REPAIR-II
 NORTHBOUND STRUCTURE
 I-39 OVER PERRY ROAD

S.N. 052-0045

SCALE: SHEET NO. S25 OF S28 SHEETS STA. TO STA. FED. ROAD DIST. NO. ILLINOIS FED. AID PROJECT

F.A.J. R.T.E.	SECTION	COUNTY	TOTAL SHEETS	SHEET NO.
39	103-1, 103-2/RS	LEE	313	241

CONTRACT NO. 64E97