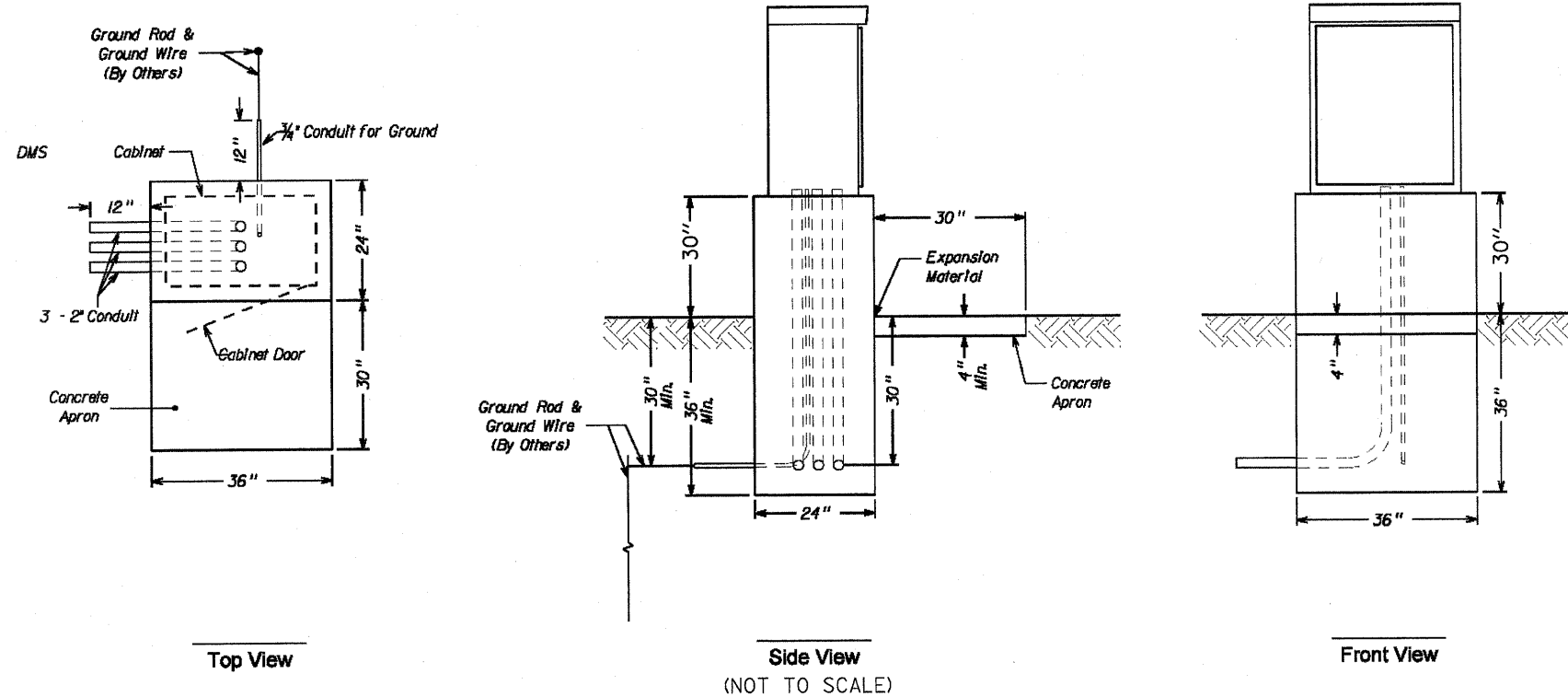
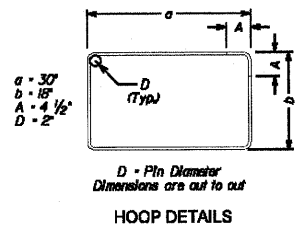
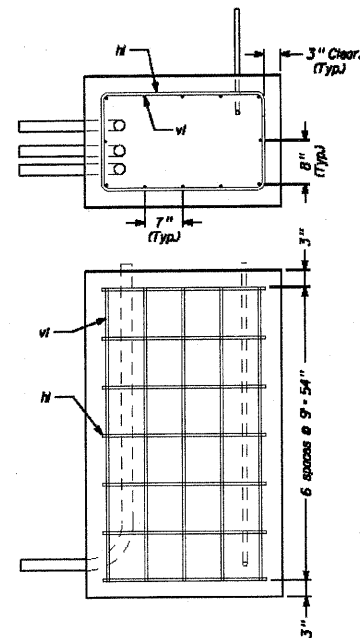


STATE OF ILLINOIS  
DEPARTMENT OF TRANSPORTATION



- DMS CABINET FOOTING NOTES:
1. CENTER DMS CABINET ON FOOTING AND ATTACH WITH PULL OUT ANCHORS.
  2. CENTER CONDUITS IN THE FOOTING. PRIOR TO POURING THE FOOTING, CONFIRM THAT NO CONFLICTS EXIST BETWEEN THE CONDUIT PLACEMENT AND THE DMS CABINET. MAINTAIN AT LEAST 2" OF CLEARANCE TO THE EDGE OF THE DMS CABINET.
  3. CAP ALL OPEN ENDS OF CONDUIT BEFORE BACKFILLING. FOR FUTURE REFERENCE, MARK THE LOCATIONS OF ALL CONDUIT ENTERING THE FOOTING ON THE SIDE WHICH THE CONDUIT ENTERS. LOCATE MARKS NEAR THE TOP OF THE FOUNDATION TO ENSURE THEY REMAIN VISIBLE AFTER BACKFILLING AND SHAPING.
  4. INSTALL SOCKET TYPE BELL ENDS ON CONDUIT PROTRUDING FROM THE FOOTING. FINISHED CONDUIT (INCLUDING BELL END) IS TO PROTRUDE 5 TO 6 INCHES FROM THE TOP OF FOOTING.
  5. USE CLASS C STRUCTURAL CONCRETE FOR THE FOOTING. MEET THE REQUIREMENTS OF SECTION 503.07 FOR PLACEMENT OF THE CONCRETE. THE TOP OF THE FOOTING IS TO BE LEVEL, AND THE TOP OF EDGES ROUNDED WITH AN EDGER.
  6. PROVIDE FORMS OF SUFFICIENT STRENGTH TO PREVENT WARPING, BULGING, OR OTHER DEFLECTIONS. REFER TO SECTION 503.06 E FOR ADDITIONAL REQUIREMENTS.
  7. EPOXY COATED REINFORCEMENT TO MEET THE REQUIREMENTS OF SECTION 508.
  8. CONDUIT TO MEET THE REQUIREMENTS OF SECTION 1088.
  9. EXCAVATION, BACKFILLING, AND SITE RESTORATION TO MEET THE REQUIREMENTS OF SECTIONS 202, 208, AND 104.06, RESPECTIVELY.
  10. THIS WORK WILL BE PAID AS 87800500, CONCRETE FOUNDATION, SPECIAL.
  11. CONDUITS ENCASED WITHIN THE FOUNDATION SHALL BE INCLUDED IN THE COST OF THE FOUNDATION.



| EPOXY COATED REINFORCEMENT QUANTITIES |     |      |        |        |
|---------------------------------------|-----|------|--------|--------|
| per footing                           |     |      |        |        |
| BAR                                   | QTY | SIZE | LENGTH | WEIGHT |
| v1                                    | 12  | #4   | 54     | 36.1   |
| h1                                    | 7   | #4   | 105    | 40.9   |
| Total Weight                          |     |      |        | 77.0   |

| CONCRETE QUANTITIES  |            |
|----------------------|------------|
| per footing location |            |
| Footing              | 1.22 cu yd |
| Pad                  | 0.09 cu yd |



*George M. Stuenkel*  
4/9/10

| DESIGNED - S. POSKA   |          | 2010                               |  |
|-----------------------|----------|------------------------------------|--|
| CHECKED - G. STUENKEL | EXAMINED | ENGINEER OF BRIDGE DESIGN          |  |
| DRAWN - M. BRESSLER   | PASSED   | ENGINEER OF BRIDGES AND STRUCTURES |  |
| CHECKED - G. STUENKEL |          |                                    |  |

DMS CABINET  
FOOTING DETAILS

REVISIONS  
5-26-10  
SHEET

| SHEET NO. | F.A. RTE.          | SECTION            | COUNTY      | TOTAL SHEETS                          | SHEET NO. |
|-----------|--------------------|--------------------|-------------|---------------------------------------|-----------|
| 6         | 74+280             | D2-IT-MESSAGE SIGN | ROCK ISLAND | -                                     | 6         |
| SHEETS 23 | CONTRACT NO. 64F86 |                    |             | ILLINOIS FED. AID PROJECT C-92-061-10 |           |