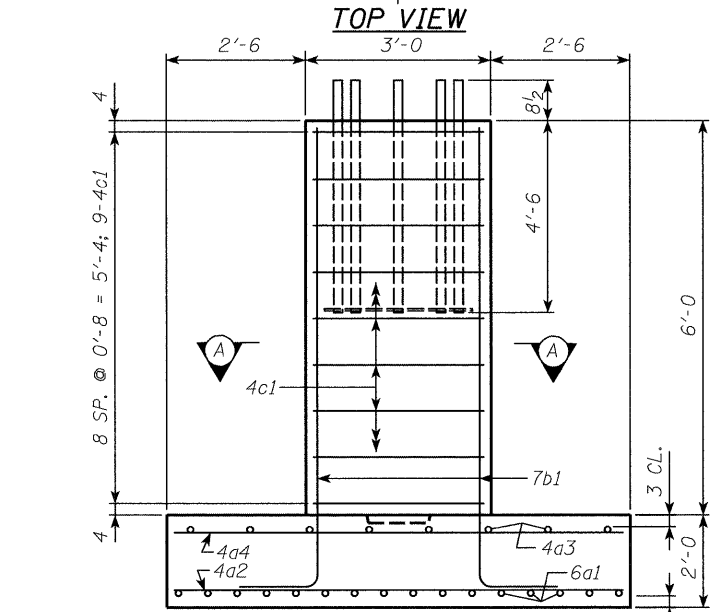
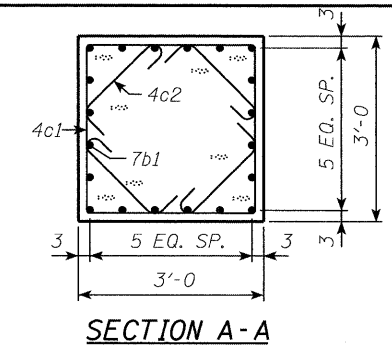
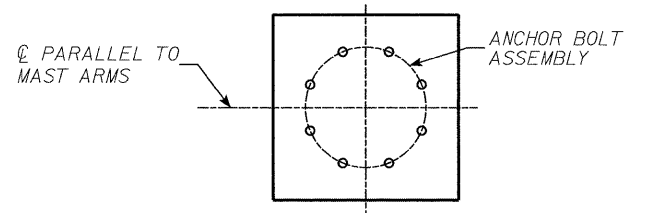
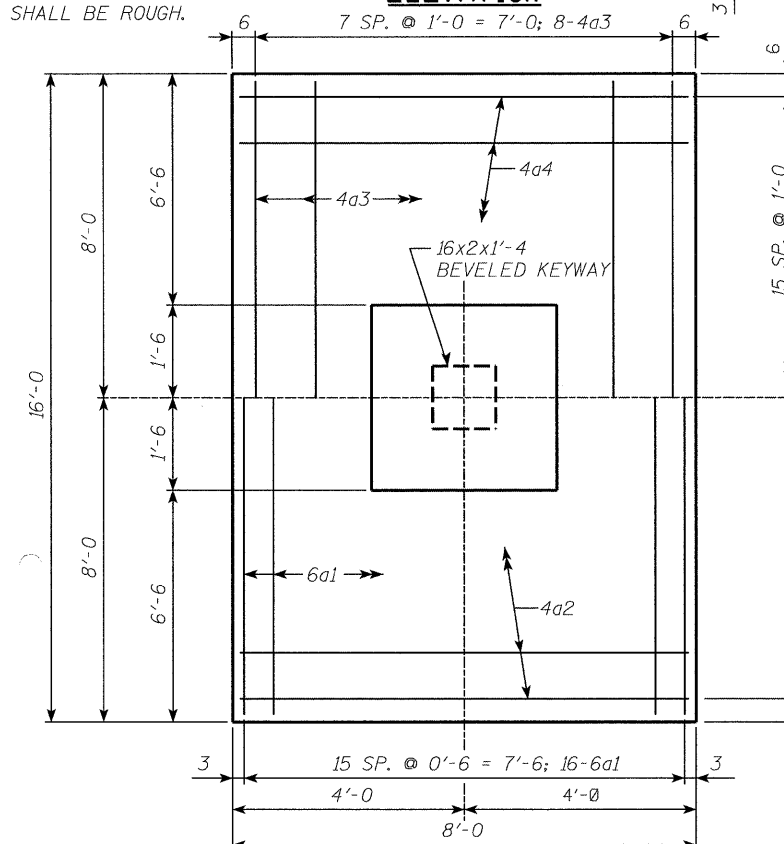


STATE OF ILLINOIS
DEPARTMENT OF TRANSPORTATION



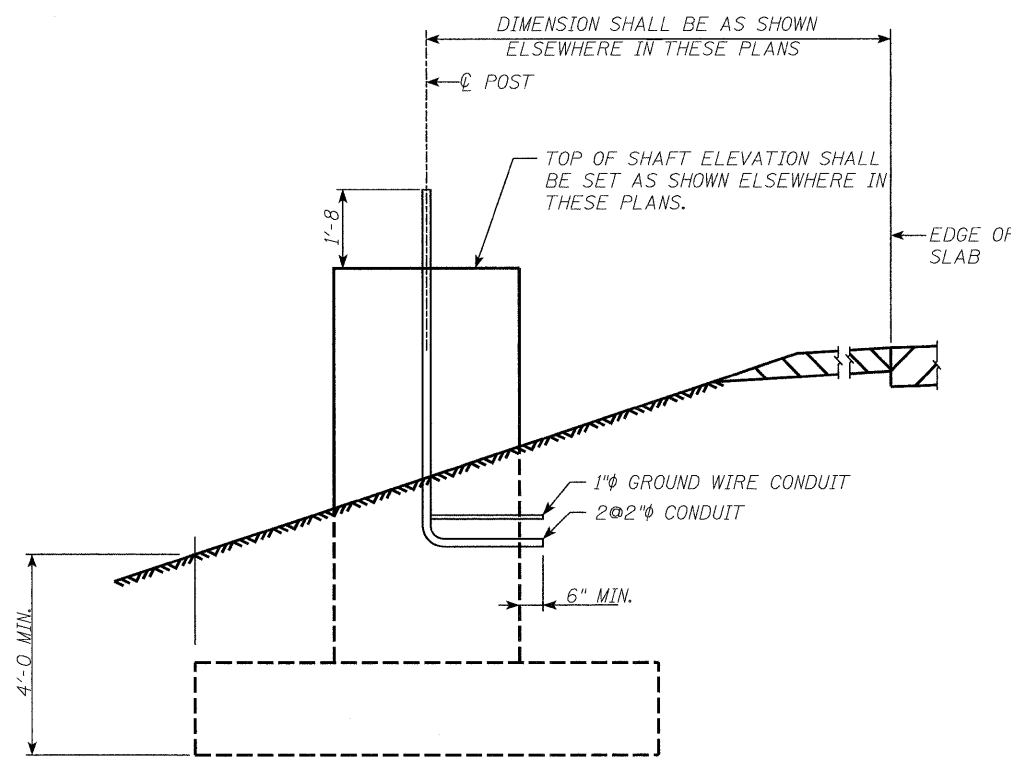
THE JOINT BETWEEN THE
SHAFT AND FOOTING
SHALL BE ROUGH.

ELEVATION

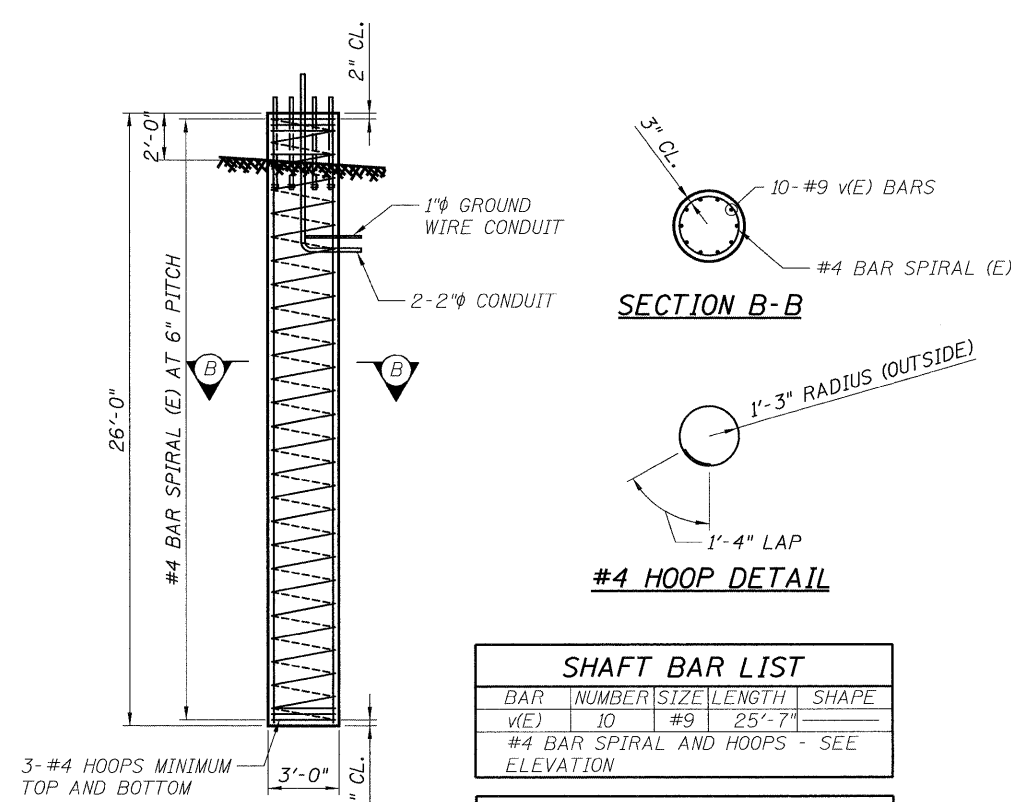


FOOTING PLAN

DESIGNED	MBC	200
CHECKED	KLG	EXAMINED
DRAWN	FJD	PASSED
CHECKED	KLG	ENGINEER OF BRIDGES AND STRUCTURES



ELEVATION - TOP OF SHAFT
AND BACKFILL

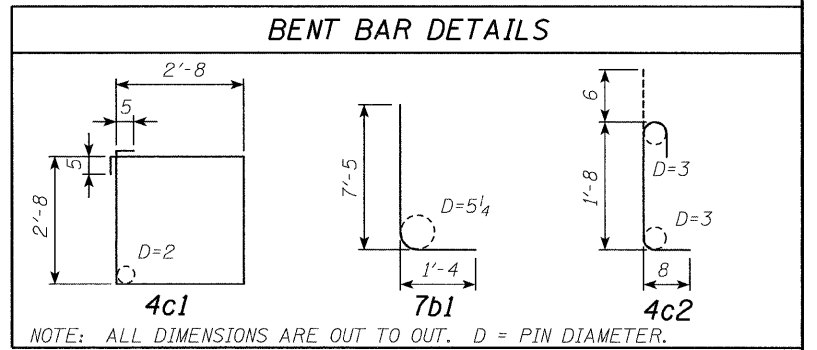


DRILLED SHAFT
ELEVATION
(FOR SITE 404 ONLY)

BAR	NUMBER	SIZE	LENGTH	SHAPE
v(E)	10	#9	25'-7"	
#4 BAR SPIRAL AND HOOPS - SEE ELEVATION				

ITEM	QUANTITY
SHAFT	7 CU. YDS.

BAR	LOCATION	SHAPE	NO.	LENGTH	WEIGHT
6a1	FOOTING BOT., LONGIT.	—	16	15'-8"	377
4a2	FOOTING BOT., TRANSV.	—	16	7'-8"	82
4a3	FOOTING TOP, LONGIT.	—	8	15'-8"	84
4a4	FOOTING TOP, TRANSV.	—	16	7'-8"	82
7b1	FOOTING TO SHAFT DOWEL	L	20	8'-9"	358
4c1	SHAFT HOOPS	□	9	11'-6"	69
4c2	SHAFT TIES	⌋	36	2'-10"	68
REINFORCING STEEL - EPOXY COATED TOTAL (LBS.)					1120



Mehmet B. Civelek
03-10-2010

ITEM	QUANTITY
SHAFT	2.0
FOOTING	9.5
TOTAL - CU. YDS.	11.5

ITEM	UNIT	QUANTITY
STRUCTURAL CONCRETE	CU. YDS.	11.5
REINFORCING STEEL-EPOXY COATED	LBS.	1120

F.A. RTE.	SECTION	COUNTY	TOTAL SHEETS	SHEET NO.
74+280	D2.IT MESSAGE SIGN	ROCK ISLAND	23	20
CONTRACT NO. 64F86				
ILLINOIS FED. AID PROJECT C-92-061-10				

SHEET NO.	20
SHEETS	23