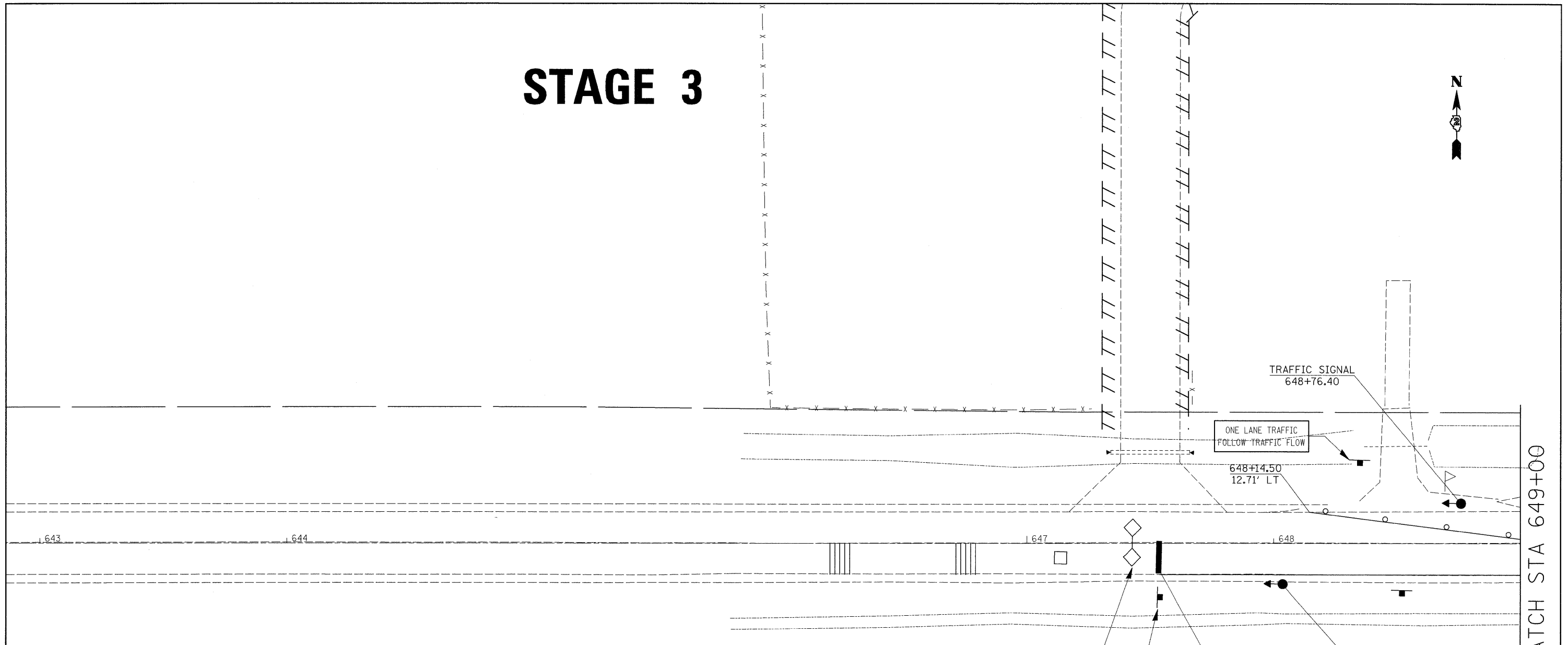


# STAGE 3



MATCH STA 649+00

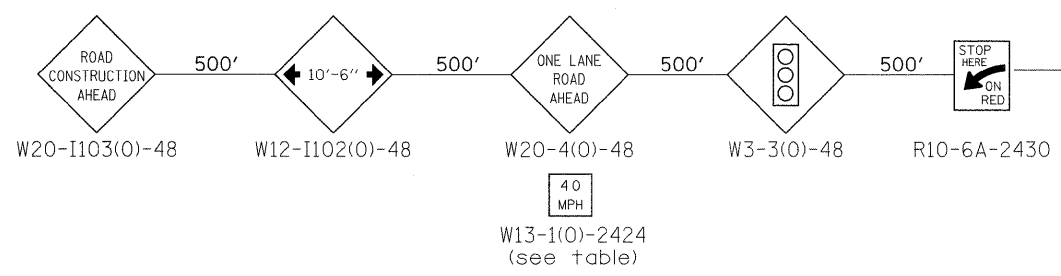
### STAGE 3 NOTES

1. USE STANDARD 701321 FOR CULVERT WORK.
2. CONSTRUCT UPSTREAM SECTIONS OF CULVERT INCLUDING RIP-RAP AND EARTHWORK.
3. COMPLETE CONSTRUCTION OF CLASS C PATCH TO THE CENTERLINE.
4. PLACE PROPOSED GUARDRAIL.

### STAGE 4 NOTES

1. REMOVE TEMP. PATCH AND USE STANDARD 701201 FOR INSTALLATION OF CLASS C PATCH.
2. REMOVE TEMP. ENTRANCE AND PIPE AT LT. STA 647+50.
3. PLACE PAVEMENT MARKINGS.

	= WORK ZONE
	= TYPE III BARRICADE WITH FLASHING LIGHTS
	= SIGN
	= BARRICADE, OR DRUM WITH STEDAY BURNING LIGHTS
	= INDUCTION LOOP DETECTOR
	= TRAFFIC SIGNAL
	= TEMPORARY RUMBLE STRIPS



FILE NAME =	USER NAME = grantpm	DESIGNED -	REVISED -	<b>STATE OF ILLINOIS DEPARTMENT OF TRANSPORTATION</b>	<b>STAGE 3</b>	F.A.P. RTE.	SECTION	COUNTY	TOTAL SHEETS	SHEET NO.	
or \pwwork\pwwork\grantpm\dms36948\0204906-shit-staging.dgn	PLOT SCALE = 20,0000' / IN.	DRAWN -	REVISED -			585	128T-1	HENRY	35	21	
PLOT DATE = Thu Mar 18 11:22:00 2010	DATE -	CHECKED -	REVISED -			CONTRACT NO. 64G18					
						ILLINOIS FED. AID PROJECT					