

FOR INFORMATION ONLY

STATE OF ILLINOIS
DIVISION OF HIGHWAYS

| ROUTE NO. | SEC. | COUNTY | TOTAL SHEETS | SHEET NO. |
|---|---------|-----------|--------------|-----------|
| FA 403 | 195-3HB | WHITESIDE | 24 | 9 |
| FED. ROAD DIST. NO. 7 ILLINOIS F.A. PROJ. | | | | |

SHEET NO. 11

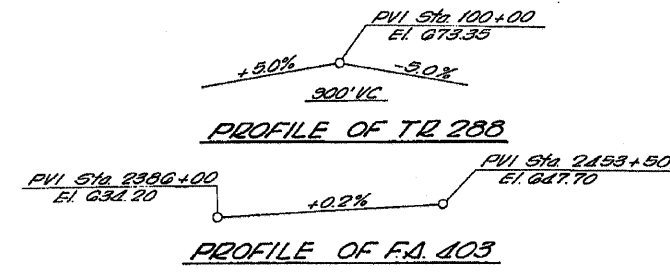
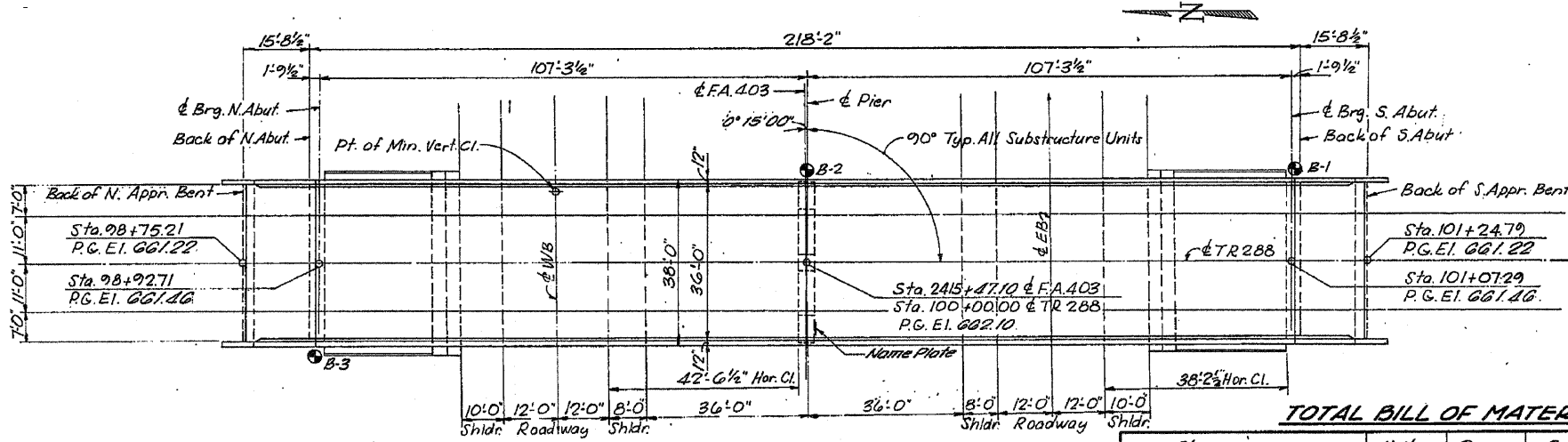
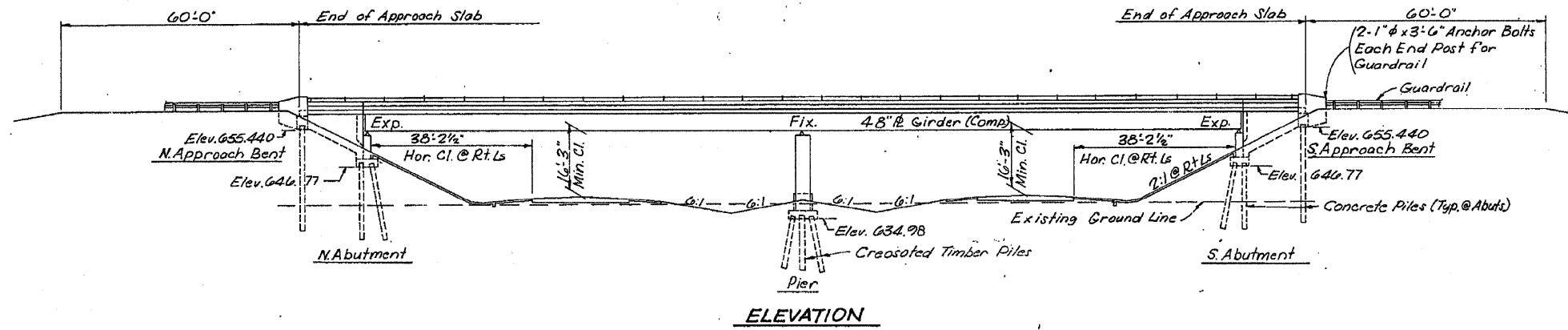
GENERAL NOTES

All reinforcement bars shall be lapped 24 diameters unless otherwise shown.
Fasteners shall be high strength bolts. Bolts $\frac{3}{8}$ " ϕ ; open holes $\frac{1}{8}$ " ϕ unless otherwise noted.
Calculated weight of Structural Steel = 253,167 lbs.
The basic lead silico chromate paint system shall be used for shop and field painting of Structural Steel.
Field welding of construction accessories will not be permitted to bottom of flange of girders nor to the top flange for a distance equal to one-fourth the span length each way from the pier supports. Field welding in other areas will be permitted only when approved by the Engineer.
Anchor bolts shall be set before bolting diaphragms over supports.
Slab wall shall be reinforced with welded wire fabric 6×6 " mesh, weighing 58# per 100 sq. ft.
The contractor shall drive one concrete test pile at each abut. In place and one timber pile in vicinity of pier as directed by the Engineer before ordering the remainder of piles.
Concrete piles at abutments shall be driven in holes prepared through the embankment in accordance with Article 513.09(c) of the Standard Specifications.
The concrete rail section above the mandatory construction joint of the top of the slab shall be constructed of Class X Concrete, except the aggregates shall conform to the requirements of Handrail Concrete.
Protective Coat shall not be applied to surfaces to which Cool Tar Interlayer Protective Coat is applied.
The embankment configuration shown shall be the minimum embankment that must be constructed prior to construction of the abutment.

DESIGN STRESSES

$f_c = 1200$ psi Deck Slab
 $f_c = 1400$ psi Curb, Parapet, & Substructure
 $V_c = 75$ psi (Footings)
 $n = 10$
 $f_s = 20,000$ psi Reinf.
 $f_s = 20,000$ psi Struct.
Allowable Δ Deflection = $\frac{1}{1200}$
Design Specifications 1969 AASHTO (as applicable)
Allow: 25# per square ft. for future wearing surface.

LOADING - HS 15-44

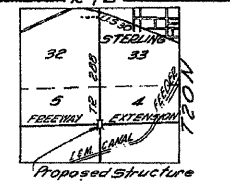
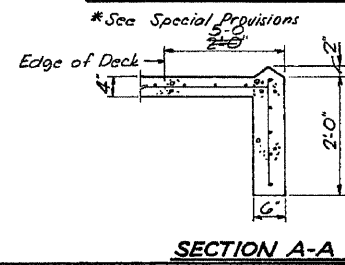
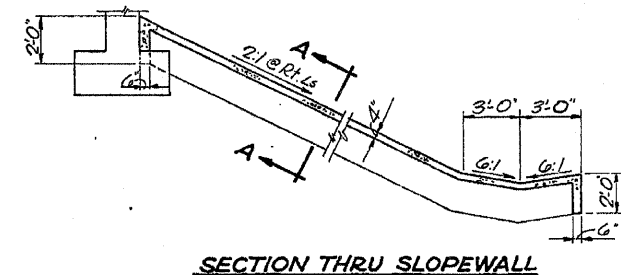


STATION 2415+47.10
BUILT 1972 BY
STATE OF ILLINOIS
F.A. RTE. 403 SEC. 195-3HB-3
LOADING HS15

NAME PLATE
See Std. 2113

TOTAL BILL OF MATERIAL

| Item | Unit | Super | Sub | Total | |
|--|----------|-------|-------|-------|----------|
| Structure Excavation | Cu. Yds. | | 72 | 72 | 56 |
| Class X Concrete | Cu. Yds. | 302.2 | 197.8 | 500.0 | 506.7 |
| Structural Steel | Lump Sum | 1 | | 1 | 86,725.0 |
| Reinforcement Bars | Lbs. | 65846 | 20899 | 86745 | 1372.0 |
| Concrete Piles | Lin. Ft. | | 2047 | 2047 | 413.0 |
| Test Piles, Concrete | Ea. | | 2 | 2 | |
| Slope Wall 4" | Sq. Yds. | | 290 | 290 | 219 |
| Bit. Surf. Class I | Tons | 81 | | 81 | 959 |
| Cool Tar Inter. Prot. Coat | Sq. Yds. | 96.0 | | 96.0 | |
| Aluminum Railing | Lin. Ft. | 489 | | 489 | |
| Preformed Jt. Sealer | Lin. Ft. | 76 | | 76 | |
| Stud Shear Connectors, $\frac{3}{4}$ " | Ea. | 1890 | | 1890 | |
| Name Plate | Ea. | | 1 | 1 | |
| Protective Coat | Sq. Yds. | 160 | 36 | 196 | 166.0 |
| Sand Backfill | Cu. Yds. | | 155 | 155 | 875.0 |
| Crescoted Timber Piles (201#39) | Lin. Ft. | | 1008 | 1008 | |
| Test Piles, Timber | Ea. | | 1 | 1 | |



| | | | |
|----------|-------------|----------|--|
| DESIGNED | H. Walker | EXAMINED | |
| CHECKED | C. Clary | PASSED | |
| DRAWN | C. Clary | APPROVED | |
| CHECKED | S. McKnight | | |

GENERAL PLAN & ELEVATION
PROJECT F.A. 403
T.R. 288 OVER F.A. 403
F.A. RTE. 403-SEC. 195-3HB-3
WHITESIDE COUNTY
STATION 2415+47.10

PLANS PREPARED BY MACKIE ENGINEERING CO.
Rev. Structure Excav. 1-13-72

| | | | | | | | | | | |
|--|-------------------|------------|---------------------------|---|--------------------------|--------------|-----------|--------|--------------|-----------|
| FILE NAME = | USER NAME = lmkdj | DESIGNED - | REVISED - | STATE OF ILLINOIS DEPARTMENT OF TRANSPORTATION | GENERAL PLAN & ELEVATION | F.A.I. RTE. | SECTION | COUNTY | TOTAL SHEETS | SHEET NO. |
| D:\BRV\Bridge Painting\Contract\PAINTING\64619\PLANeng.dgn | DRAWN - | REVISED - | 88 | | | (195-3HB-3)P | Whiteside | 8 | 5 | |
| PLOT SCALE = 50,0000' / IN. | CHECKED - | REVISED - | CONTRACT NO. 64G19 | | | | | | | |
| PLOT DATE = Tue Mar 16 06:42:29 2010 | DATE - | REVISED - | ILLINOIS FED. AID PROJECT | | | | | | | |