

STATE OF ILLINOIS
DEPARTMENT OF TRANSPORTATION
DIVISION OF HIGHWAYS

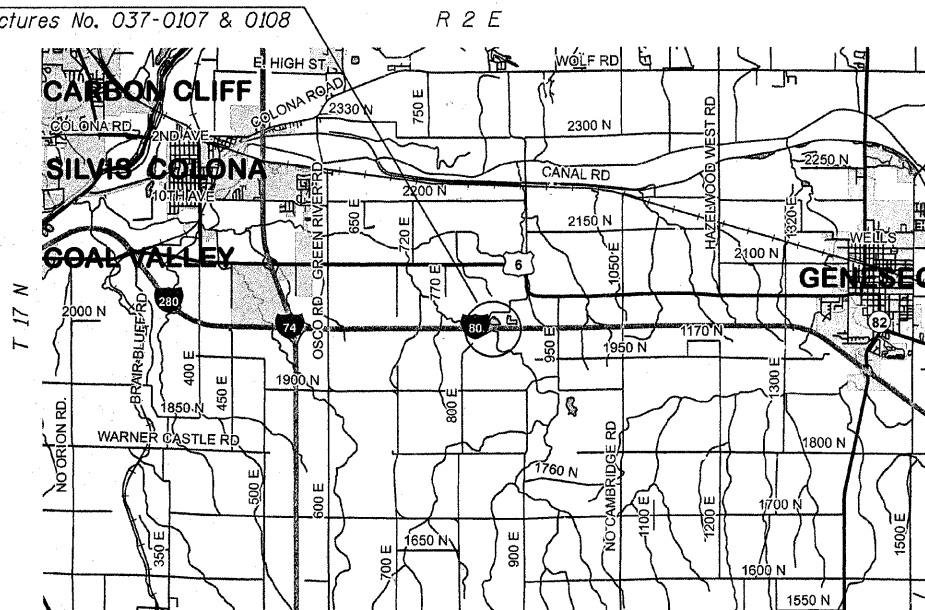
**PROPOSED
HIGHWAY PLANS**

FAI ROUTE 80 (I-80)
SECTION (37-2B-2)M

BRIDGE REPAIRS
HENRY COUNTY

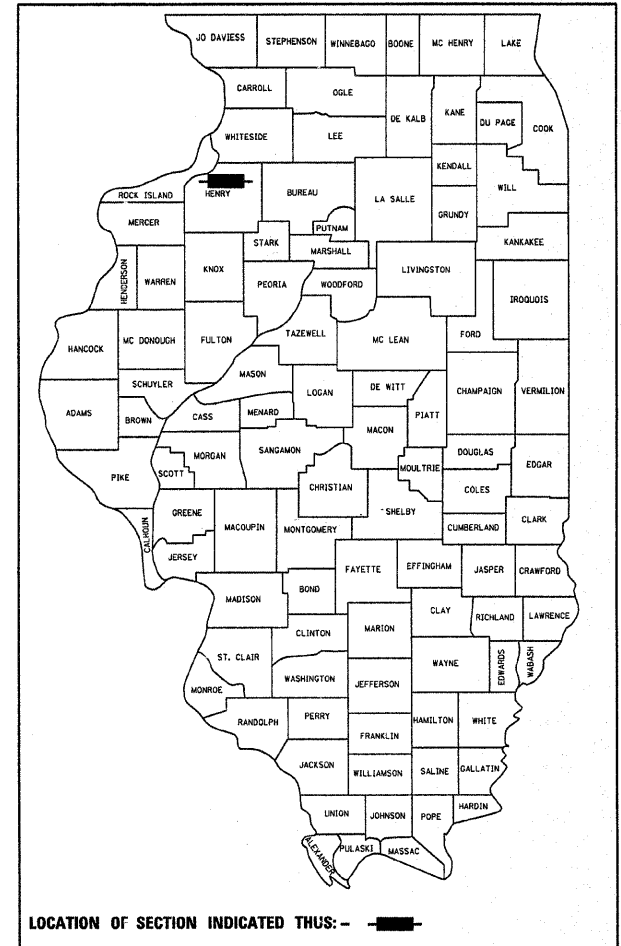
C-92-149-10

Project Location
Structures No. 037-0107 & 0108



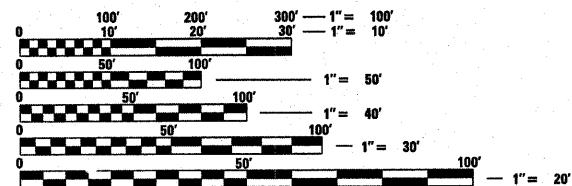
F.A.I. RTE.	SECTION	COUNTY	TOTAL SHEETS	SHEET NO.
80	(37-2B-2)M	Henry	11	1
		ILLINOIS	CONTRACT NO. 64G23	

D-92-082-10



LOCATION OF SECTION INDICATED THUS: - ■ -

FOR INDEX OF SHEETS, SEE SHEET NO. 3



FULL SIZE PLANS HAVE BEEN PREPARED USING STANDARD ENGINEERING SCALES. REDUCED SIZED PLANS WILL NOT CONFORM TO STANDARD SCALES. IN MAKING MEASUREMENTS ON REDUCED PLANS, THE ABOVE SCALES MAY BE USED.

J.U.L.I.E.
JOINT UTILITY LOCATION INFORMATION FOR EXCAVATION
1-800-892-0123
OR 811

PLAN TECHNICIAN-DAN LINK 815/284-5416
DISTRICT BRIDGE ENGINEER-MAHMOUD ETEMADI 815/284-5393

CONTRACT NO. 64G23

STATE OF ILLINOIS
DEPARTMENT OF TRANSPORTATION
DIVISION OF HIGHWAYS

SUBMITTED MARCH 25 2010
George F. Ryan
DEPUTY DIRECTOR OF HIGHWAYS, REGION ENGINEER

May 7 2010
Scott E. Stitt, P.E.
ENGINEER OF DESIGN AND ENVIRONMENT

May 7 2010
Christine M. Reed
DIRECTOR OF HIGHWAYS, CHIEF ENGINEER

PRINTED BY THE AUTHORITY
OF THE STATE OF ILLINOIS