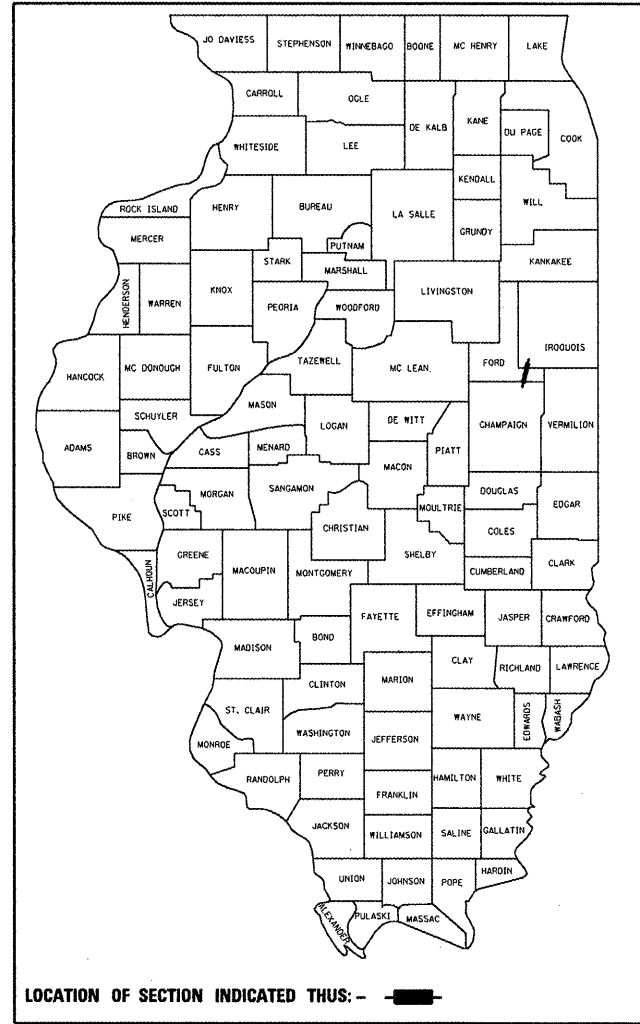


F.A.I. RTE.	SECTION	COUNTY	TOTAL SHEETS	SHEET NO.
57	**	FORD	9	1
		ILLINOIS	CONTRACT NO. 66A37	

** D3 MICRO-SURFACING 2011-1

D-93-002-10



LOCATION OF SECTION INDICATED THUS: - [rectangle] -

FUNCTIONAL CLASSIFICATION
 RURAL - INTERSTATE
 FAI 57 (I-57)
 2007 ADT 20100
 P.V. 74.1% M.U. 22.9% S.U. 3.0%

STATE OF ILLINOIS
 DEPARTMENT OF TRANSPORTATION
 DIVISION OF HIGHWAYS

SUBMITTED 4/11 2010
George F. [Signature]
 DEPUTY DIRECTOR OF HIGHWAYS, REGION ENGINEER

May 7 2010
Scott Estill P.E. [Signature]
 CHIEF ENGINEER OF DESIGN AND ENVIRONMENT

May 7 2010
Christine M. Reed [Signature]
 DIRECTOR OF HIGHWAYS, CHIEF ENGINEER

**PRINTED BY THE AUTHORITY
 OF THE STATE OF ILLINOIS**

STATE OF ILLINOIS
 DEPARTMENT OF TRANSPORTATION
 DIVISION OF HIGHWAYS

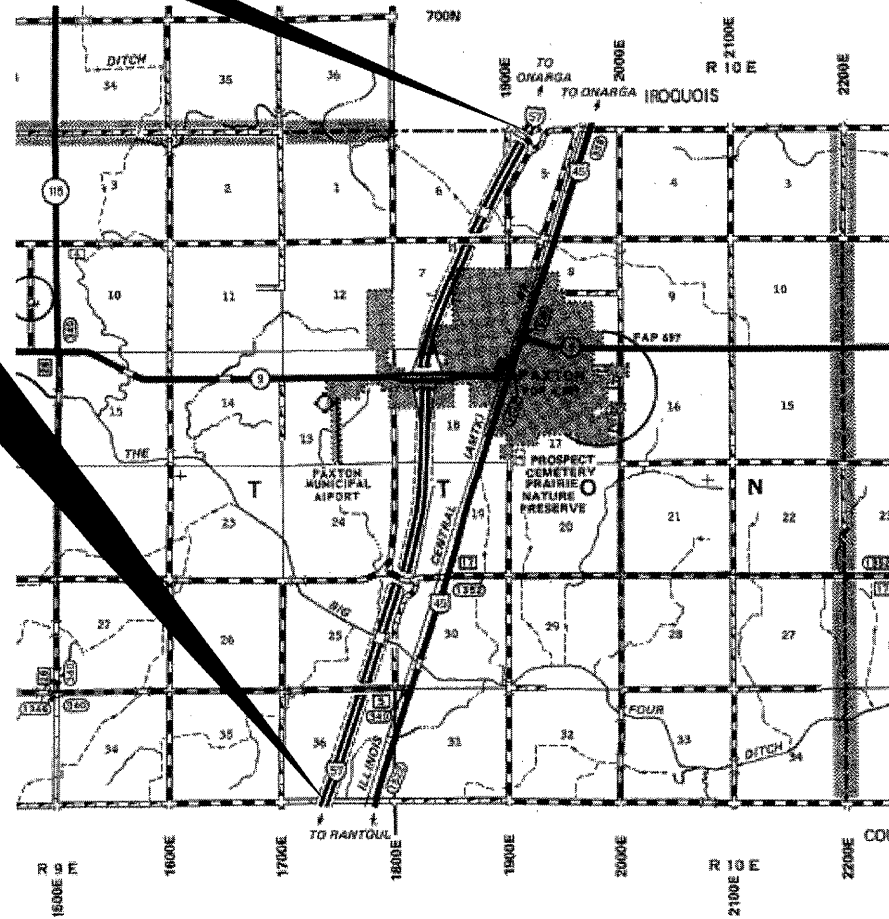
**PROPOSED
 HIGHWAY PLANS**

FAI ROUTE 57 (INTERSTATE 57)
 SECTION D3 MICRO-SURFACING 2011-1

MICRO-SURFACING JOINT REPAIR
 FORD COUNTY
 C-93-123-10

END PROJECT
 IROQUOIS COUNTY LINE
 (M.P. 263.40)

BEGIN PROJECT
 CHAMPAIGN COUNTY LINE
 (M.P. 257.14)



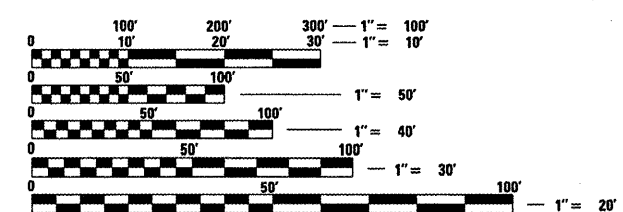
GROSS LENGTH = 33,053 FT. = 6.26 MILE

INDEX OF SHEETS

- COVER SHEET
- GENERAL NOTES
- SUMMARY OF QUANTITIES
- TYPICAL SECTION
- SCHEDULES
- TRAFFIC CONTROL AND PROTECTION, STANDARD 701400 (SPECIAL)
- TRAFFIC CONTROL AND PROTECTION, STANDARD 701401 (SPECIAL)
- CLASS A PATCHING DETAIL
- TYPICAL PAVEMENT MARKINGS

STANDARDS

- 701101-02 OFF-ROAD OPERATIONS MULTILANE, 15' (4.5 m) TO 24" (600 mm) FROM PAVEMENT EDGE
- 701106-02 OFF-ROAD OPERATIONS, MULTILANE, MORE THAN 15' (4.5 m) AWAY
- 701411-06 LANE CLOSURE, MULTILANE, AT ENTRANCE OR EXIT RAMP FOR SPEEDS ≥ 45 MPH
- 701426-03 LANE CLOSURE, MULTILANE INTERMITTENT OR MOVING OPERATION, FOR SPEEDS ≥ 45 MPH
- 701901-01 TRAFFIC CONTROL DEVICES



FULL SIZE PLANS HAVE BEEN PREPARED USING STANDARD ENGINEERING SCALES. REDUCED SIZED PLANS WILL NOT CONFORM TO STANDARD SCALES. IN MAKING MEASUREMENTS ON REDUCED PLANS, THE ABOVE SCALES MAY BE USED.

J.U.L.I.E.
 JOINT UTILITY LOCATION INFORMATION FOR EXCAVATION
 1-800-892-0123
 OR 811

PROJECT ENGINEER JOE KANNEL
 UNIT CHIEF RON WOODSHANK
 TOWNSHIPS PATTON
 CONTRACT NO. 66A37

GENERAL NOTES

THE ENGINEER WILL BE THE SOLE JUDGE CONCERNING CURING TIME FOR THE MICRO-SURFACING LIFT.

FOR STABILIZATION, ALL TYPE III BARRICADES SHALL REQUIRE A MINIMUM OF FOUR SAND BAGS PER BARRICADE.

SHORT TERM PAVEMENT MARKING SHALL BE USED TO OUTLINE THE SHOULDERS WHENEVER THE EDGE LINE IS NOT IN PLACE. THE SHORT-TERM PAVEMENT MARKING SHALL BE PLACED AS SPECIFIED IN ARTICLE 709.04 OF THE STANDARD SPECIFICATIONS.

ON EXISTING PAVEMENT WHICH MAY BE SUPERELEVATED, THE NEW MICRO-SURFACING SHALL BE BUILT WITH THE SAME SUPERELEVATION UNLESS NEW SUPERELEVATION RATES ARE GIVEN ON THE PLANS.

ANY REFERENCE TO A STANDARD IN THESE PLANS SHALL BE INTERPRETED TO MEAN THE EDITION AS INDICATED BY THE SUBNUMBER SHOWN IN THE LIST OF STANDARDS OR THE COPY INCLUDED IN THESE PLANS.

THE FOLLOWING RATES OF APPLICATION HAVE BEEN USED IN CALCULATING PLAN QUANTITIES:

MICRO-SURFACING, SINGLE PASS, TYPE II	20	LBS / SQ YD MIXTURE D
SHORT TERM PAVEMENT MARKING	4	FT /100 FT OF APPLICATION

DATE: 4/1/10

PREPARED BY: Tom Bonil
ACTING DISTRICT STUDIES & PLANS ENGINEER

EXAMINED BY: Herbert K. Long
DISTRICT CONSTRUCTION ENGINEER

Wayne J. Phillips
DISTRICT MATERIALS ENGINEER

Bruce A. Hucker
DISTRICT OPERATIONS ENGINEER

SUMMARY OF QUANTITIES

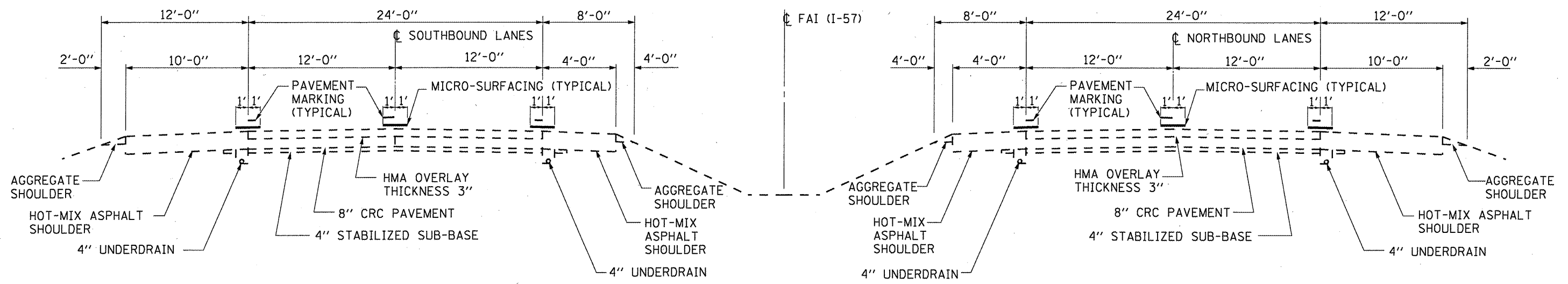
CONSTRUCTION CODE TYPE:

F000

RURAL
100% STATE
TOTAL
QUANTITY

CODE NO.	ITEM	UNIT	RURAL 100% STATE TOTAL QUANTITY
40600400	MIXTURE FOR CRACKS, JOINTS, AND FLANGEWAYS	TON	40
67100100	MOBILIZATION	L SUM	1
70100420	TRAFFIC CONTROL AND PROTECTION, STANDARD 701411	EACH	4
70300100	SHORT-TERM PAVEMENT MARKING	FOOT	5288
70300 ²⁴⁰	TEMPORARY PAVEMENT MARKING-LINE 6"	FOOT	16526
* 78005110	EPOXY PAVEMENT MARKING - LINE 4"	FOOT	132212
* 78005140	EPOXY PAVEMENT MARKING - LINE 8"	FOOT	3652
78300100	PAVEMENT MARKING REMOVAL	SQ FT	64452
78300200	RAISED REFLECTIVE PAVEMENT MARKER REMOVAL	EACH	1654
X0326221	MICRO-SURFACING, SINGLE PASS, TYPE II	SQ YD	44070
* X0326725	WET REFLECTIVE PREFORMED PAVEMENT MARKINGS - LINE 6"	FOOT	16526
X7010805	TRAFFIC CONTROL AND PROTECTION, STANDARD 701401 (SPECIAL)	L SUM	1

* SPECIALITY ITEMS



NOTE: TEMPORARY CENTERLINE STRIPING SHALL BE OFFSET A MINIMUM OF 30" TOWARDS THE WIDE SHOULDER.

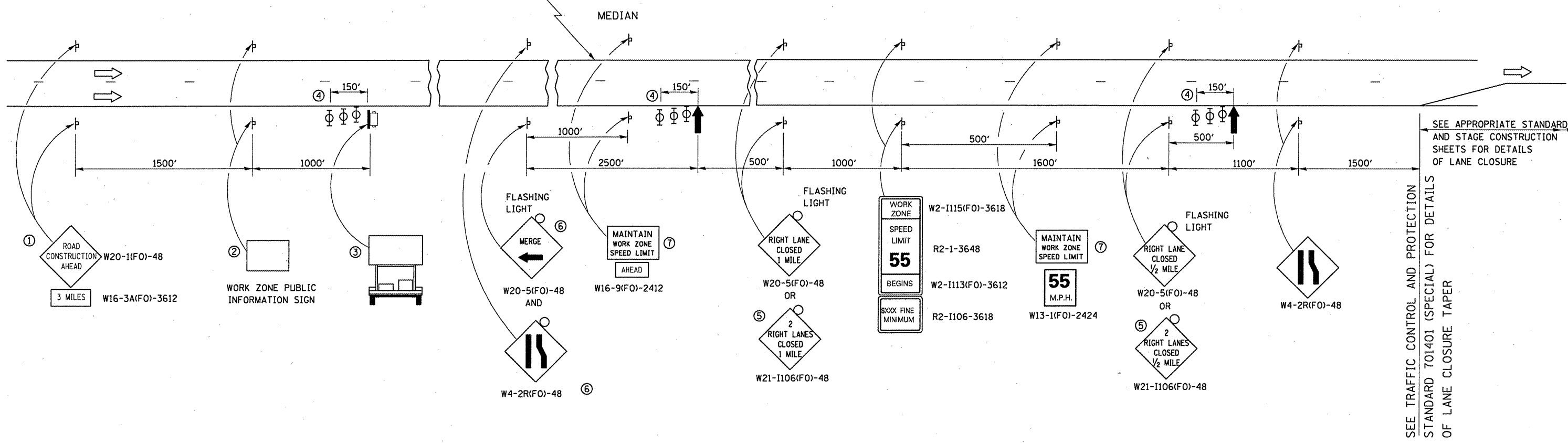
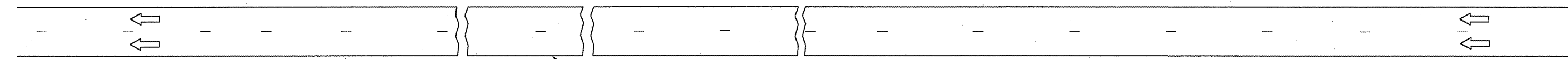
TYPICAL SECTIONS
M.P. 257.14 TO M.P. 263.40
FORD COUNTY

**

FILE NAME =	USER NAME = woodshankr1	DESIGNED - RON WOODSHANK	REVISED -	STATE OF ILLINOIS DEPARTMENT OF TRANSPORTATION	TYPICAL SECTIONS	F.A.I. RTE.	SECTION	COUNTY	TOTAL SHEETS	SHEET NO.
ct:\pw_work\pw\dot\woodshankr1\d0188633\386A37\details.dgn	DRAWN - RON WOODSHANK	REVISED -	57			**	FORD	9	4	
PLOT SCALE = 100.0000' / IN.	CHECKED -	REVISED -	** D3 MICRO-SURFACING 2011-1							
PLOT DATE = Mar 31, 2010 - 07:24:02 AM	DATE -	REVISED -	CONTRACT NO. 66A37							
SCALE: _____ SHEET NO. 1 OF 1 SHEETS					STA. _____ TO STA. _____		ILLINOIS			

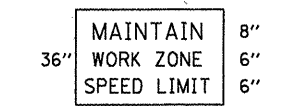
MICRO-SURFACING SCHEDULE				
LOCATION			MICRO-SURFACING SINGLE PASS TYPE II	
M.P. TO M.P.			SQ YD	
257.14 - 263.40	NBL	CENTERLINE	7345	
257.14 - 263.40	NBL	EDGE LINES	14690	
SUBTOTAL		NBL	22035	
257.14 - 263.40	SBL	CENTERLINE	7345	
257.14 - 263.40	SBL	EDGE LINES	14690	
SUBTOTAL		NBL	22035	
TOTALS			44070	

PAVEMENT MARKING SCHEDULE										
LOCATION		RAISED REFLECTIVE PAVEMENT MARKER REMOVAL	PAVEMENT MARKING REMOVAL	SHORT-TERM PAVEMENT MARKING	TEMPORARY PAINT PAVEMENT MARKING LINE 6"	WET-REFLECTIVE PREFORMED PAVEMENT MARKING LINE 6"	EPOXY PAVEMENT MARKING LINE 4"		EPOXY PAVEMENT MARKING LINE 8"	
M.P. TO M.P.		EACH	SQ FT	FEET	FEET	FEET	FEET		FEET	
				WHITE	WHITE	WHITE	YELLOW	WHITE	YELLOW	WHITE
257.14 - 263.40	NBL	827	32226	2644	8263	8263	33053	33053		1847
257.14 - 263.40	SBL	827	32226	2644	8263	8263	33053	33053		1805
SUBTOTALS							66106	66106		3652
TOTALS		1654	64452	5288	16526	16526	132212		3652	



- ① THE ROAD CONSTRUCTION AHEAD SIGN SHALL BE LOCATED 3 MILES IN ADVANCE OF THE PROJECT LIMITS.
- ② THE MESSAGE AND SIZE OF THE WORK ZONE PUBLIC INFORMATION SIGN SHALL BE AS SPECIFIED BY THE DEPARTMENT.
- ③ TO BE PLACED IN THE MEDIAN WHEN FEASIBLE. THE MESSAGE BOARD SHALL BE USED TO DISPLAY STATUS OF LANES WITHIN THE PROJECT. THE PRIMARY MESSAGES SHALL BE:
"RIGHT LANE CLOSED" / " x MILES AHEAD"
"LEFT LANE CLOSED" / " x MILES AHEAD"
"ALL LANES OPEN"
- ④ THREE, TYPE II BARRICADES, DRUMS, OR VERTICAL BARRICADES AT 50' CENTERS.
- ⑤ THIS SIGN SHALL BE USED WHEN 2 LANES ARE CLOSED.
- ⑥ WHEN THE LEFT LANE IS CLOSED, SWITCH THESE TWO SIGNS AND THE DIRECTION OF THE MERGE ARROW.

⑦ 48"x36" FLUORESCENT ORANGE SIGN WITH BLACK LETTERS.
48"



- ↑ ARROW BOARD
- ▭ PORTABLE CHANGEABLE MESSAGE SIGN
- ⊥ SIGN
- ⊕ TYPE II BARRICADE, DRUM, OR VERTICAL BARRICADE WITH MONODIRECTIONAL FLASHING LIGHT
- ↘ LANE DROP ARROW - SEE STANDARD 780001
- ▨ TEMPORARY THERMOPLASTIC RUMBLE STRIPS

GENERAL NOTE:

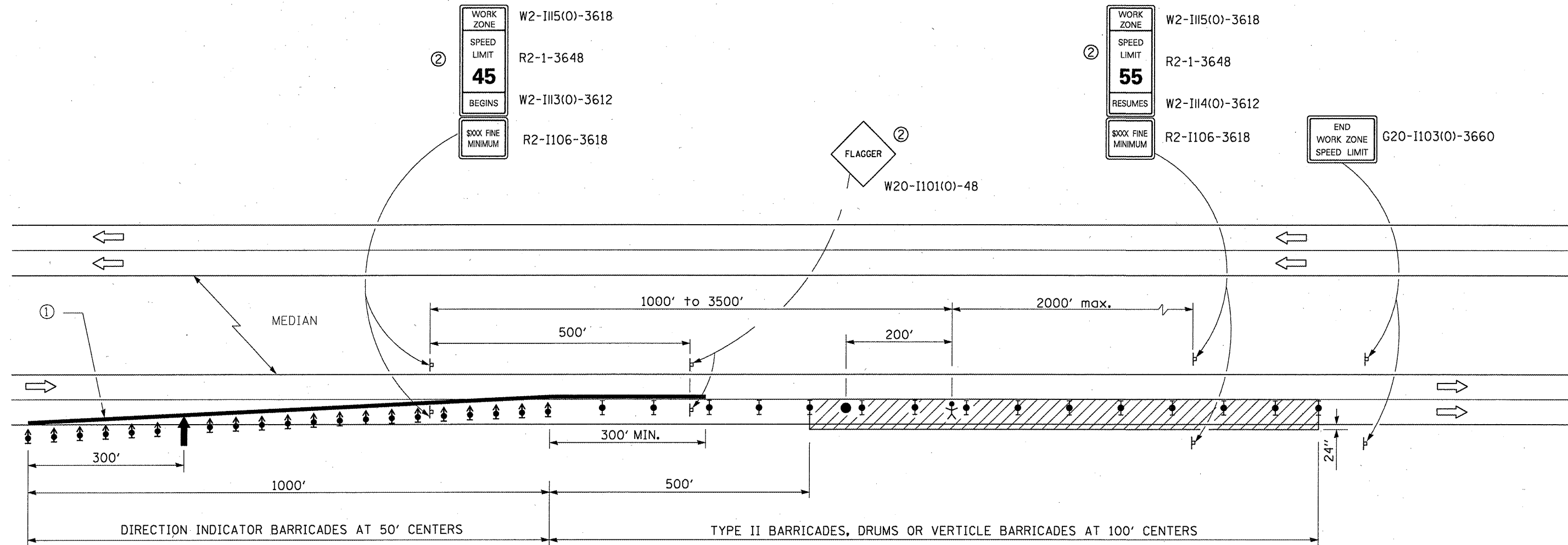
THIS STANDARD IS USED WHERE AT ANY TIME A LANE IS CLOSED ON A FREEWAY/EXPRESSWAY.

WHEN THE LEFT LANE IS CLOSED, LEFT LANE CLOSED SIGNS SHALL BE SUBSTITUTED FOR THE RIGHT LANE CLOSED SIGNS.

THE FIRST TWO SIGNS AND THE MESSAGE BOARD ARE STATIONARY. THE OTHER SIGNS AND ARROWBOARDS SHALL BE MOVED AS NECESSARY TO MAINTAIN THE REQUIRED DISTANCE FROM THE START OF THE LANE CLOSURE TAPER(S).


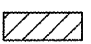

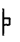



WHEN WORK OPERATIONS ARE NEAR MAJOR INTERCHANGES THE CONTRACTOR SHALL FURNISH ADDITIONAL MESSAGE BOARDS AND UTILIZED AT THE DIRECTION OF THE ENGINEER.

FILE NAME =	USER NAME = woodshankr1	DESIGNED - RON WOODSHANK	REVISED -	STATE OF ILLINOIS DEPARTMENT OF TRANSPORTATION	TRAFFIC CONTROL AND PROTECTION STANDARD 701400 (SPECIAL) DETAILS	F.A.I. RTE.	SECTION	COUNTY	TOTAL SHEETS	SHEET NO.	
366A37detals.dgn	366A37detals.dgn	DRAWN - RON WOODSHANK	REVISED -			57	**	FORD	9	6	
PLOT SCALE = 100.0000' / IN.		CHECKED -	REVISED -			** 03 MICRO-SURFACING 2011-1 CONTRACT NO. 66A37					
PLOT DATE = Mar 31, 2010 - 07:24:15 AM		DATE -	REVISED -			ILLINOIS					



SEE TRAFFIC CONTROL AND PROTECTION STANDARD 701400 (SPECIAL) FOR APPROACH TO LANE CLOSURE DETAILS

SYMBOLS

-  ARROW BOARD
-  WORK AREA
-  WORKER
-  SIGN
-  DIRECTION INDICATOR BARRICADE WITH STEADY BURN MONODIRECTIONAL LIGHT
-  TYPE II BARRICADES, DRUM OR VERTICAL BARRICADE WITH STEADY BURN MONODIRECTIONAL LIGHT
-  Flagger with traffic control sign

- ① REFLECTORIZED TEMPORARY PAVEMENT MARKING TAPE SHALL BE PLACED THROUGHOUT THE TAPER AND FOR 300' ALONGSIDE THE WORK AREA WHEN THE CLOSURE TIME IS GREATER THAN FOURTEEN DAYS. THE EDGE LINE SHALL BE WHITE FOR RIGHT LANE CLOSURES AND YELLOW FOR LEFT LANE CLOSURES. TEMPORARY RAISED REFLECTORIZED PAVEMENT MARKERS AT 25' CENTERS SHALL BE USED TO SUPPLEMENT THE PAVEMENT MARKING TAPE.
- ② WORK ZONE SPEED LIMITS SIGNS AND FLAGGER SIGNS SHALL BE MOVED AS NECESSARY TO MAINTAIN THE REQUIRED SPACING BETWEEN THE SIGNS AND THE WORKERS IN EACH SEPARATE WORK ACTIVITY.

GENERAL NOTES

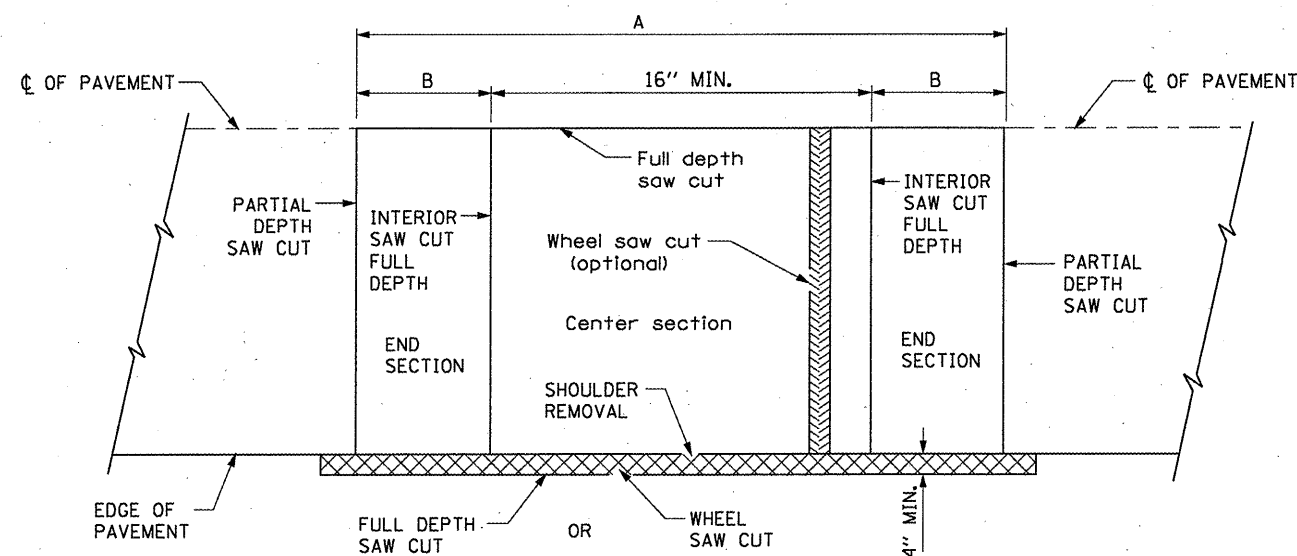
THIS STANDARD IS USED WHERE AT ANY TIME ANY VEHICLE, EQUIPMENT, WORKERS OR THEIR ACTIVITIES WILL ENCROACH ON THE LANE ADJACENT TO THE SHOULDER OR ON THE SHOULDER WITHIN 24" OF THE EDGE OF PAVEMENT.

THIS STANDARD MUST ALWAYS BE USED IN COMBINATION WITH TRAFFIC CONTROL AND PROTECTION DETAIL 701400 (SPECIAL).

THIS STANDARD ALSO APPLIES WHEN WORK IS BEING PERFORMED IN THE LEFT LANE. UNDER THESE CONDITIONS, THE SET UP WOULD BE A MIRROR IMAGE TO WHAT IS SHOWN.

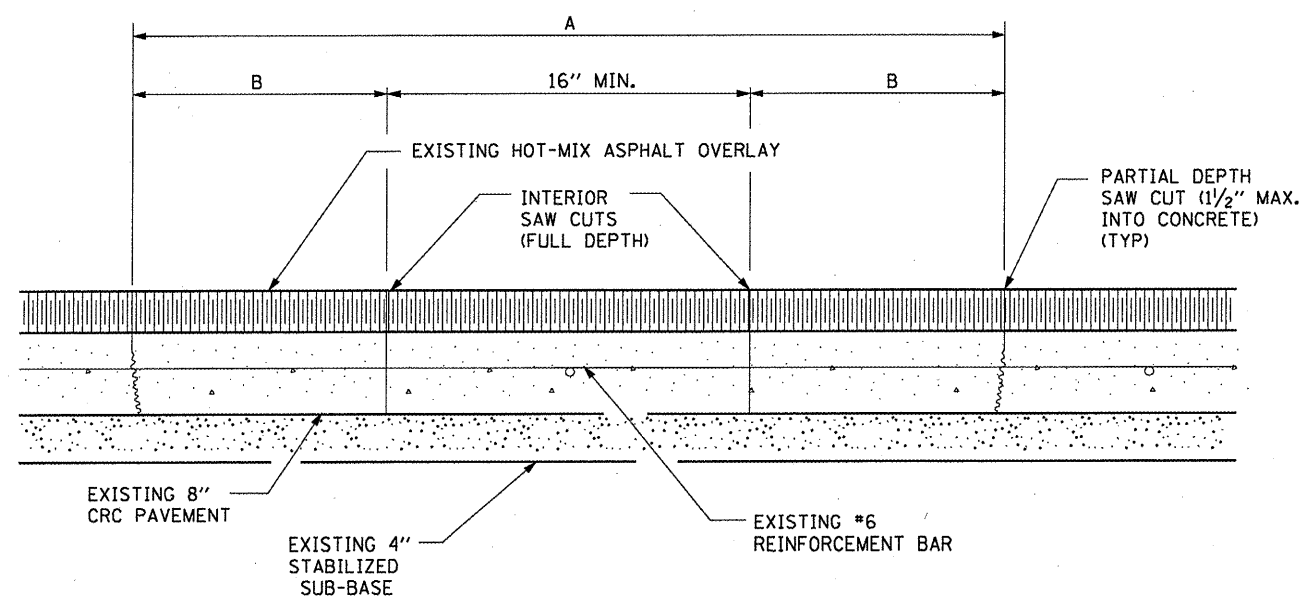
A CHECK BARRICADE SHALL BE PLACED IN THE MIDDLE OF THE CLOSED LANE AND AT THE SHOULDER AT 1000' CENTER.

FILE NAME =	USER NAME = woodshankr1	DESIGNED - RON WOODSHANK	REVISED -	STATE OF ILLINOIS DEPARTMENT OF TRANSPORTATION	TRAFFIC CONTROL AND PROTECTION STANDARD 701401 (SPECIAL) DETAILS	F.A.I. RTE.	SECTION	COUNTY	TOTAL SHEETS	SHEET NO.
02\pvt\work\pvt\dot\woodshankr1\d0188633\366A37\details.dgn	DRAWN - RON WOODSHANK	REVISED -	57			**	FORD	9	7	
PLOT SCALE = 100.0000' / IN.	CHECKED -	REVISED -	** 03 MICRO-SURFACING 2011-1							
PLOT DATE = Mar 31, 2010 - 07:24:21 AM	DATE -	REVISED -	CONTRACT NO. 66A37							
					SCALE: _____	SHEET NO. 1 OF 1 SHEETS		STA. _____ TO STA. _____		

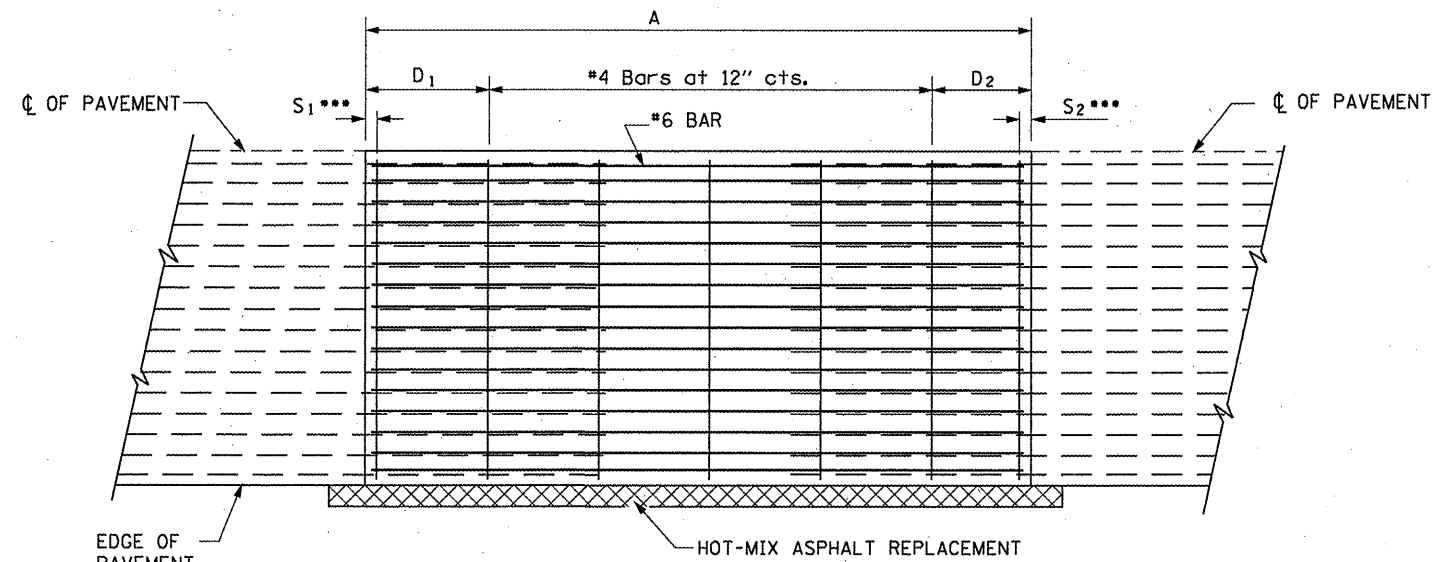


EXISTING PAVEMENT SAWING DETAIL
(AGAINST BITUMINOUS SHOULDER)

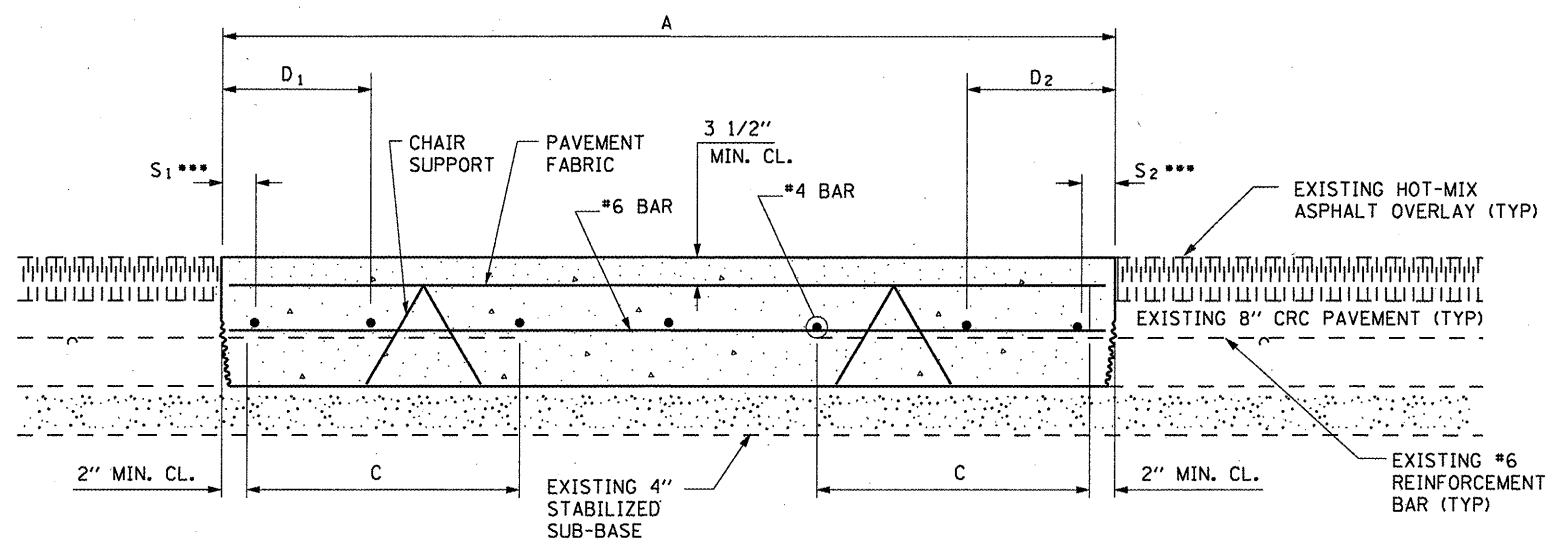
EXISTING LONGITUDINAL REINFORCEMENT BARS	A (min.)	B (min.)	C (min.)
No. 6	6'-0"	24"	19"



EXISTING PAVEMENT SAW CUTTING DETAIL



PROPOSED PAVEMENT DETAIL
(AGAINST BITUMINOUS SHOULDER)



PROPOSED CLASS A PATCHING DETAIL

NOTES:

- EVERY 3rd INTERSECTION MUST BE TIED
- LAP NEW REINFORCEMENT WITH EXISTING LONGITUDINAL REINFORCEMENT
- VARIABLES: WHERE S₁ AND S₂ ARE 2 1/2" MIN. AND 12" MAX. D₁ = 2(S₁) AND D₂ = 2(S₂)

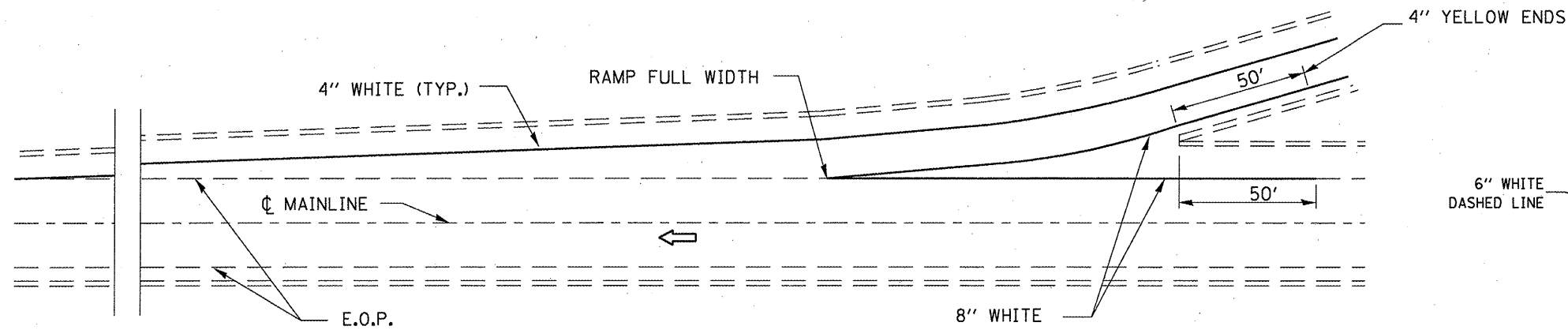
FILE NAME =	USER NAME = woodshankr1	DESIGNED - RON WOODSHANK	REVISED -
ct:\pwork\pwidot\woodshankr1\d0188633\0366A37\detail.dgn		DRAWN - RON WOODSHANK	REVISED -
PLOT SCALE = 100.0000' / IN.		CHECKED -	REVISED -
PLOT DATE = Mar 31, 2010 - 07:24:27 AM		DATE -	REVISED -

STATE OF ILLINOIS
DEPARTMENT OF TRANSPORTATION

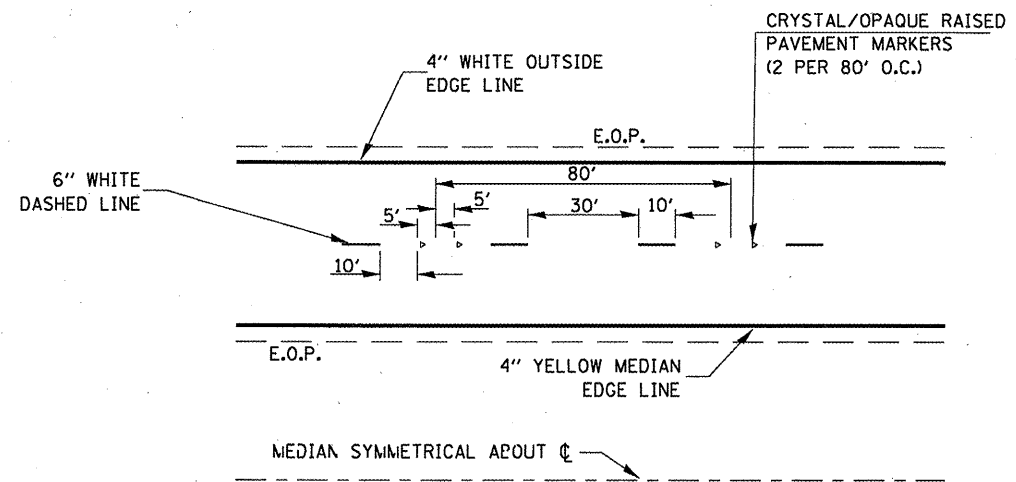
CLASS A PATCHING DETAIL

SCALE: SHEET NO. 1 OF 1 SHEETS STA. TO STA.

F.A.I. RTE.	SECTION	COUNTY	TOTAL SHEETS	SHEET NO.
57	**	FORD	9	8
** D3 MICRO-SURFACING 2011-1			CONTRACT NO. 66A37	
ILLINOIS				



TYPICAL PAVEMENT MARKING FOR ENTRANCE RAMP TERMINALS



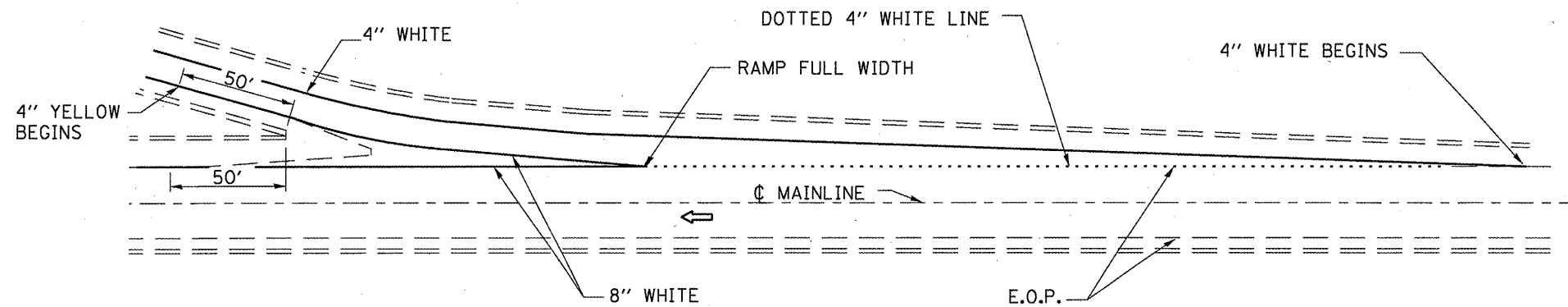
TYPICAL PAVEMENT MARKINGS

FAI 57

NOTE:

WHEN PATCHING IS ADJACENT TO 8" PAVEMENT MARKING LINE THE 8" STRIP SHALL BE REPLACED WITH TWO 4" LINES.

RAISED REFLECTIVE PAVEMENT MARKERS THAT FALL WITHIN PATCHED BOUNDARIES WILL NOT BE REPLACED.



TYPICAL PAVEMENT MARKINGS FOR EXIT RAMP TERMINALS

FILE NAME =	USER NAME = woodshankr1	DESIGNED - RON WOODSHANK	REVISED -
c:\pw\work\pwidot\woodshankr1\d0188633\366A37\details.dgn		DRAWN - RON WOODSHANK	REVISED -
PLOT SCALE = 100.0000 / IN.		CHECKED -	REVISED -
PLOT DATE = Mar 31, 2010 - 07:24:32 AM		DATE -	REVISED -

STATE OF ILLINOIS
DEPARTMENT OF TRANSPORTATION

TYPICAL PAVEMENT MARKING

SCALE: SHEET NO. 1 OF 1 SHEETS STA. TO STA.

F.A.I. RTE. 57	SECTION **	COUNTY FORD	TOTAL SHEETS 9	SHEET NO. 9
** D3 MICRO-SURFACING 2011-1			CONTRACT NO. 66A37	
ILLINOIS				