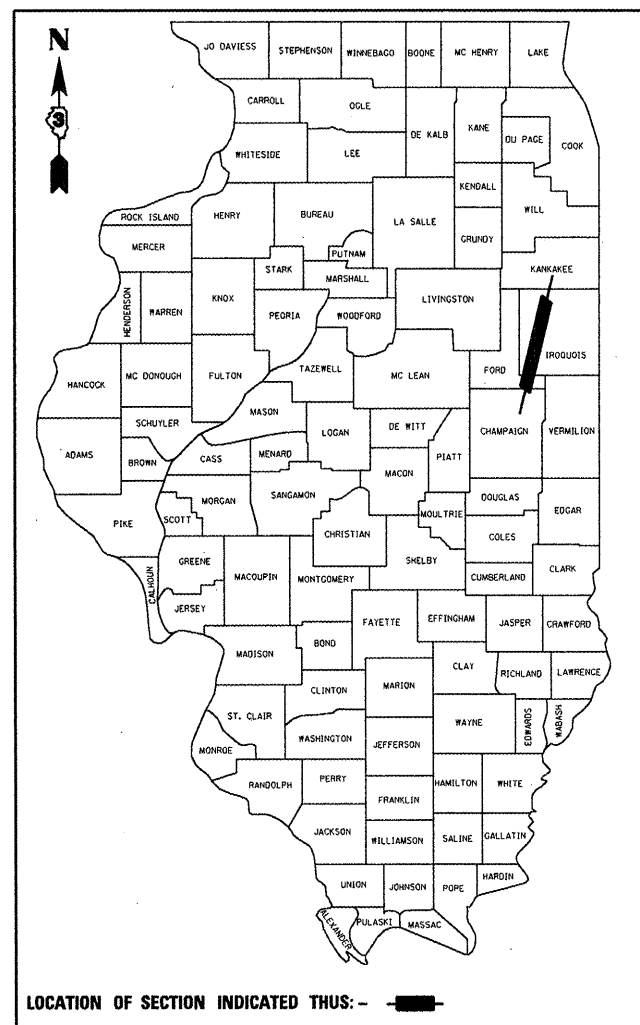


F.A.I. RTE.	SECTION	COUNTY	TOTAL SHEETS	SHEET NO.
57	D3 PATCHING 2011-5	**	11	1

** FORD & IROQUOIS

D-93-002-10



LOCATION OF SECTION INDICATED THUS: - [shaded area] -

FUNCTIONAL CLASSIFICATION
RURAL - INTERSTATE
FAI RTE. 57 (I-57)
2007 ADT 16300
P.V. 92.7% M.U. 2.7% S.U. 4.6%

STATE OF ILLINOIS
DEPARTMENT OF TRANSPORTATION
DIVISION OF HIGHWAYS

SUBMITTED 4/11 2010
George E. Stitt
DEPUTY DIRECTOR OF HIGHWAYS, REGION ENGINEER
May 7 2010
Scott E. Stitt
acting ENGINEER OF DESIGN AND ENVIRONMENT
May 7 2010
Christine M. Deedler
DIRECTOR OF HIGHWAYS, CHIEF ENGINEER

PRINTED BY THE AUTHORITY
OF THE STATE OF ILLINOIS

STATE OF ILLINOIS
DEPARTMENT OF TRANSPORTATION
DIVISION OF HIGHWAYS

PROPOSED
HIGHWAY PLANS

FAI ROUTE 57 (I-57)
SECTION D3 PATCHING 2011-5

PAVEMENT PATCHING
FORD & IROQUOIS COUNTY

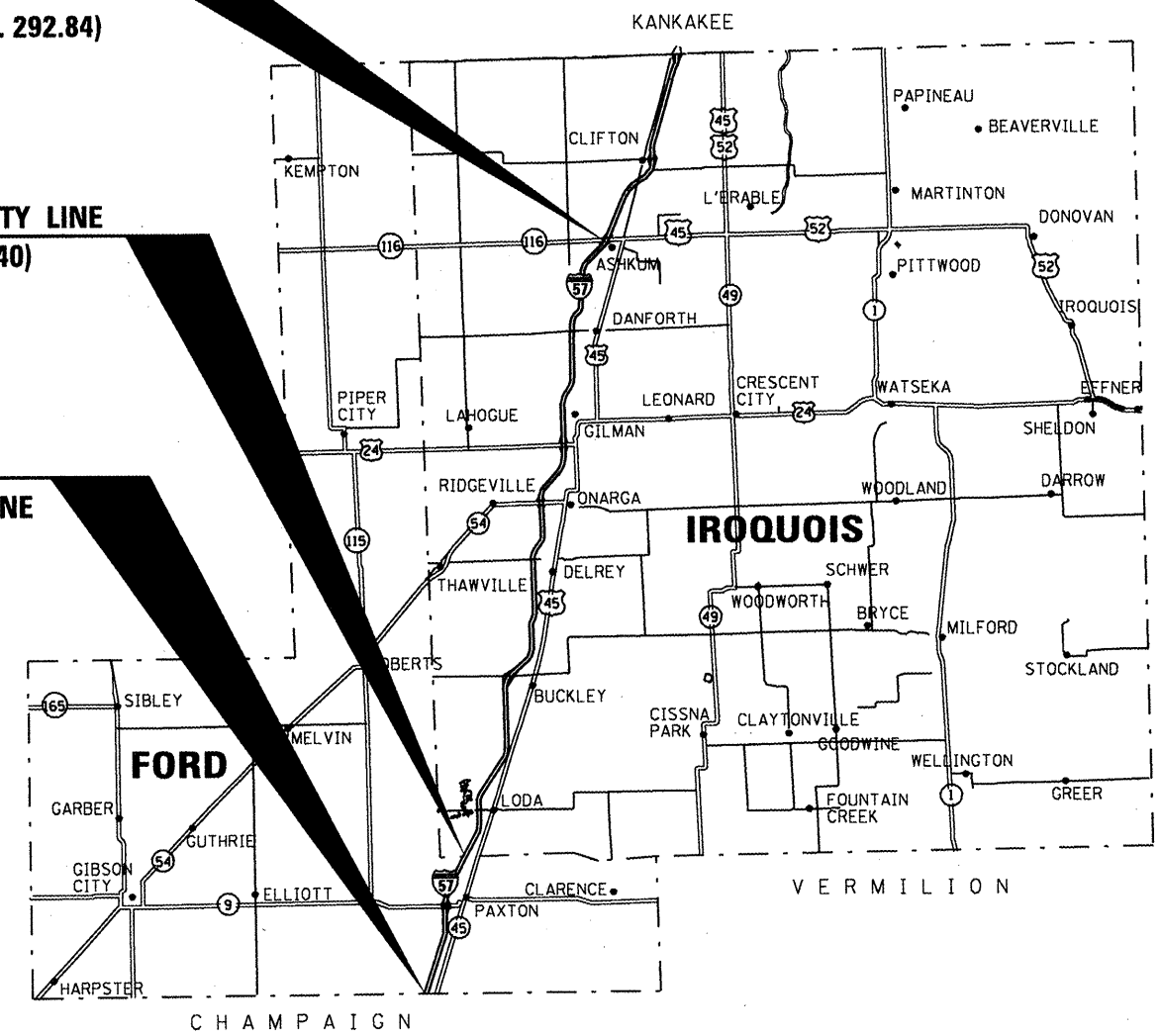
C-93-124-10

END PROJECT

IL RTE. 116
M.P. 292.84)

IROQUOIS COUNTY LINE
(M.P. 263.40)

BEGIN PROJECT
CHAMPAIGN COUNTY LINE
(M.P. 257.17)



CHAMPAIGN

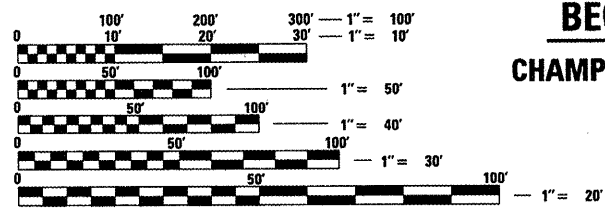
GROSS LENGTH = 177,777.60 FT. = 33.67 MILE

INDEX OF SHEETS

- COVER SHEET
- GENERAL NOTES
- SUMMARY OF QUANTITIES
- TYPICAL SECTIONS
- PATCHING SCHEDULE- NBL
- PATCHING SCHEDULE - SBL
- PAVEMENT MARKING SCHEDULES
- TRAFFIC CONTROL AND PROTECTION, STANDARD 701400 (SPECIAL)
- TRAFFIC CONTROL AND PROTECTION, STANDARD 701401 (SPECIAL)
- CLASS A PATCHING DETAILS
- TYPICAL PAVEMENT MARKINGS

STANDARDS

- 000001-05 STANDARD SYMBOLS, ABBREVIATIONS AND PATTERNS
- 001001-02 AREAS OF REINFORCEMENT BARS
- 001006 DECIMAL OF AN INCH AND OF A FOOT
- 421001-02 BAR REINFORCEMENT FOR CRC PAVEMENT
- 701001-02 OFF-ROAD OPERATIONS 2L, 2W, MORE THAN 15' (4.5 m) AWAY
- 701006-03 OFF-ROAD OPERATIONS 2L, 2W, 15' (4.5 m) TO 24" (600 mm) FROM PAVEMENT EDGE
- 701101-02 OFF-ROAD OPERATIONS MULTILANE, 15' (4.5 m) TO 24" (600 mm) FROM PAVEMENT EDGE
- 701106-02 OFF-ROAD OPERATIONS, MULTILANE, MORE THAN 15' (4.5 m) AWAY
- 701411-06 LANE CLOSURE, MULTILANE, AT ENTRANCE OR EXIT RAMP FOR SPEEDS ≥ 45 MPH
- 701426-03 LANE CLOSURE, MULTILANE INTERMITTENT OR MOVING OPERATION, FOR SPEEDS ≥ 45 MPH
- 701901-01 TRAFFIC CONTROL DEVICES



FULL SIZE PLANS HAVE BEEN PREPARED USING STANDARD ENGINEERING SCALES. REDUCED SIZED PLANS WILL NOT CONFORM TO STANDARD SCALES. IN MAKING MEASUREMENTS ON REDUCED PLANS, THE ABOVE SCALES MAY BE USED.

J.U.L.I.E.
JOINT UTILITY LOCATION INFORMATION FOR EXCAVATION
1-800-892-0123
OR 811

PROJECT ENGINEER JOE KANNEL
UNIT CHIEF RON WOODSHANK
TOWNSHIPS VARIOUS
CONTRACT NO. 66A38

GENERAL NOTES

PLAN DIMENSIONS AND DETAILS RELATIVE TO EXISTING ROADWAY OR STRUCTURE HAVE BEEN TAKEN FROM EXISTING PLANS AND ARE SUBJECT TO NOMINAL CONSTRUCTION VARIATIONS. IT SHALL BE THE CONTRACTOR'S RESPONSIBILITY TO VERIFY SUCH DIMENSIONS AND DETAILS IN THE FIELD AND TO MAKE NECESSARY APPROVED ADJUSTMENTS PRIOR TO CONSTRUCTION OR ORDERING OF MATERIALS. SUCH VARIATIONS SHALL NOT BE CAUSE FOR ADDITIONAL COMPENSATION FOR A CHANGE IN THE SCOPE OF THE WORK, HOWEVER, THE CONTRACTOR WILL BE PAID FOR THE QUANTITY ACTUALLY FURNISHED AT THE UNIT BID FOR THE WORK.

FOR STABILIZATION, ALL TYPE III BARRICADES SHALL REQUIRE A MINIMUM OF FOUR SAND BAGS PER BARRICADE.

THE CONTRACTOR SHALL BE RESPONSIBLE FOR PROTECTING UTILITY PROPERTY FROM CONSTRUCTION OPERATIONS AS OUTLINED IN ARTICLE 107.31 OF THE STANDARD SPECIFICATIONS. THE "JULIE" NUMBER IS 1-800-892-0123. A MINIMUM OF FORTY-EIGHT (48) HOURS ADVANCE NOTICE IS REQUIRED.

EXISTING REINFORCEMENT BARS EXTENDING INTO REMOVAL AREA SHALL BE CLEANED, STRAIGHTENED AND INCORPORATED INTO THE NEW CONSTRUCTION. ANY REINFORCEMENT BARS THAT ARE DAMAGED DURING CONCRETE REMOVAL SHALL BE REPLACED WITH AN APPROVED BAR SPLICER OR ANCHORAGE SYSTEM. COST INCLUDED WITH CONCRETE REMOVAL.

ABANDONED UNDERGROUND UTILITIES THAT CONFLICT WITH CONSTRUCTION SHALL BE DISPOSED OF OUTSIDE THE LIMITS OF THE RIGHT OF WAY ACCORDING TO ARTICLE 202.03 OF THE STANDARD SPECIFICATIONS AND AS DIRECTED BY THE ENGINEER. THIS WORK WILL NOT BE PAID FOR SEPARATELY BUT SHALL BE INCLUDED IN THE COST OF CLASS A PATCHING.

THE THICKNESS OF BITUMINOUS MIXTURES SHOWN ON THE PLANS IS THE NOMINAL THICKNESS. DEVIATIONS FROM THE NOMINAL THICKNESS WILL BE PERMITTED WHEN SUCH DEVIATIONS OCCUR DUE TO IRREGULARITIES IN THE EXISTING SURFACE OR BASE ON WHICH THE BITUMINOUS MIXTURE IS PLACED.

ANY REFERENCE TO A STANDARD IN THESE PLANS SHALL BE INTERPRETED TO MEAN THE EDITION AS INDICATED BY THE SUBNUMBER LISTED ON THE INDEX OF SHEETS OR THE COPY OF THE STANDARD INCLUDED IN THESE PLANS.

THE EXISTING SHOULDERS ARE LOW. IN THE EVENT THAT CONSTRUCTION OPERATIONS RESULT IN A DROP OFF GREATER THAN 3" BETWEEN THE EDGE OF PAVEMENT OR EDGE OF SHOULDER WITHIN 3' OF THE EDGE OF PAVEMENT AND THE EARTH OR AGGREGATE SHOULDERS, THEN THE DROP OFF SHALL BE PROTECTED ACCORDING TO ARTICLE 701.04(B)(1) OF THE STANDARD SPECIFICATIONS. THIS WORK WILL BE CONSIDERED AS INCLUDED IN THE CONTRACT UNIT PRICES FOR TRAFFIC CONTROL.

DATE: 4/1/10

PREPARED BY: *David B. Smith*
ACTIVELA DISTRICT STUDIES & PLANS ENGINEER

EXAMINED BY: *Herbert K. Swales*
DISTRICT CONSTRUCTION ENGINEER

Wayne L. Philly
DISTRICT MATERIALS ENGINEER

James A. Huber
DISTRICT OPERATIONS ENGINEER

FILE NAME =	USER NAME = woodshankr1	DESIGNED - RON WOODSHANK	REVISED -
ct:\pw_work\pwidot\woodshankr1\0143171\066A38-detail.dgn		DRAWN - RON WOODSHANK	REVISED -
	PLOT SCALE = 100.0000' / IN.	CHECKED -	REVISED -
	PLOT DATE = Mar 31, 2010 - 06:38:21 AM	DATE -	REVISED -

**STATE OF ILLINOIS
DEPARTMENT OF TRANSPORTATION**

GENERAL NOTES

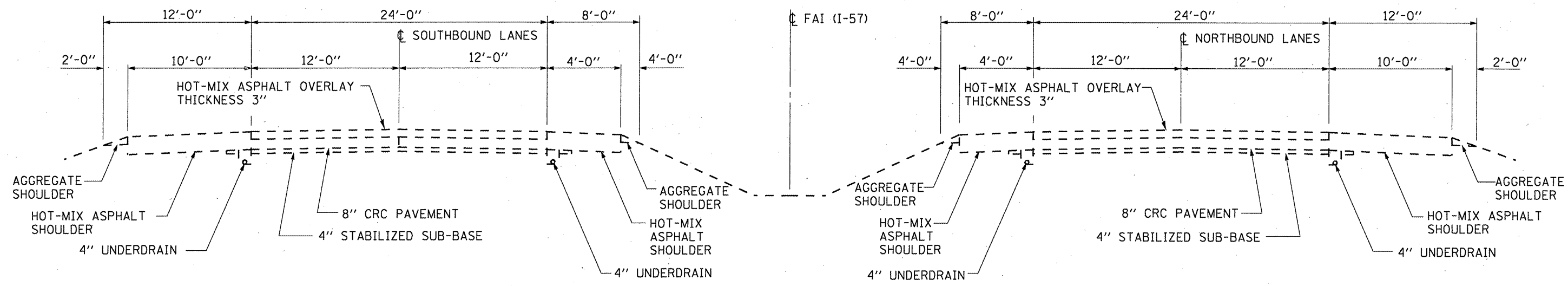
SCALE: _____ SHEET NO. 1 OF 1 SHEETS STA. _____ TO STA. _____

F.A.I. RTE.	SECTION	COUNTY	TOTAL SHEETS	SHEET NO.
57	D3 PATCHING 2011-5	**	11	2
ILLINOIS			CONTRACT NO. 66A38	
** FORD & IROQUOIS				

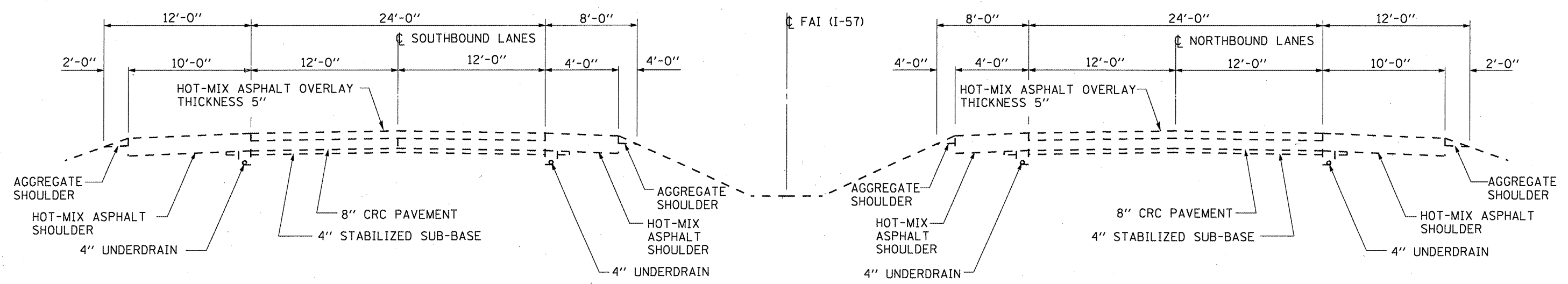
SUMMARY OF QUANTITIES

CODE NO.	ITEM	UNIT	TOTAL QUANTITY	RURAL 100% STATE	
				FORD COUNTY J000	IROQUOIS COUNTY J000
44200565	CLASS A PATCHES, TYPE II, 11 INCH	SQ YD	98	98	
44200574	CLASS A PATCHES, TYPE I, 13 INCH	SQ YD	483		483
44213000	PATCHING REINFORCEMENT	SQ YD	581	98	483
44213100	PAVEMENT FABRIC	SQ YD	581	98	483
44213200	SAW CUTS	FOOT	4136	676	3460
67100100	MOBILIZATION	L SUM	1	0.75	0.25
70100420	TRAFFIC CONTROL AND PROTECTION, STANDARD 701411	EACH	16	4	12
70103815	TRAFFIC CONTROL SURVEILLANCE	CAL DA	15	5	10
* 78005110	EPOXY PAVEMENT MARKING - LINE 4"	FOOT	412	74	338
* 78005130	EPOXY PAVEMENT MARKING - LINE 6"	FOOT	102	19	83
X7010805	TRAFFIC CONTROL AND PROTECTION, STANDARD 701401 (SPECIAL)	L SUM	1	0.2	0.8

* SPECIALITY ITEM



TYPICAL SECTIONS
M.P. 257.14 TO M.P. 263.49
FORD COUNTY



TYPICAL SECTIONS
M.P. 263.49 TO M.P. 292.84
IROQUOIS COUNTY

FILE NAME =	USER NAME = woodshankr1	DESIGNED - RON WOODSHANK	REVISED -	STATE OF ILLINOIS DEPARTMENT OF TRANSPORTATION	TYPICAL SECTIONS	F.A.I. RTE.	SECTION	COUNTY	TOTAL SHEETS	SHEET NO.
c:\pr_work\p\dot\woodshankr1\d0143171\066A38-details.dgn	DRAWN - RON WOODSHANK	REVISED -	57			D3 PATCHING 2011-5	**	11	4	
PLOT SCALE = 100.0000' / IN.	CHECKED -	REVISED -	CONTRACT NO. 66A38							
PLOT DATE = Mar 31, 2010 - 06:38:32 AM	DATE -	REVISED -	** FORD & IROQUOIS							
				SCALE: _____	SHEET NO. 1 OF 1 SHEETS	STA. _____	TO STA. _____			

PATCHING SCHEDULE - NBL

LOCATION BY MILE POST	PASSING LANE				DRIVING LANE				REMARKS	
	CLASS A TYPE II	PATCH REINF.	PAV'T FABRIC	SAW CUTS	CLASS A TYPE II	PATCH REINF.	PAV'T FABRIC	SAW CUTS		
	SQ YD	SQ YD	SQ YD	FOOT	SQ YD	SQ YD	SQ YD	FOOT		
FORD COUNTY										
257.14									CHAMPAIGN COUNTY LINE	
258.30					8	8	8	60		
258.50					8	8	8	60		
260.80					8	8	8	60		
262.50					8	8	8	60		
263.49										
SUBTOTALS					32	32	32	240	IROQUOIS COUNTY LINE IL RTE. 54 US RTE. 24 IL RTE. 116	
IROQUOIS COUNTY										
264.90					8	8	8	60		
265.90					8	8	8	60		
269.50					8	8	8	60		
271.20					8	8	8	60		
272.30					8	8	8	60		
277.50					8	8	8	60		
278.80					8	8	8	60		
280.13										
283.04										
283.10					8	8	8	60		
292.84										
SUBTOTALS					64	64	64	480		
TOTALS					96	96	96	720		

PATCHING SCHEDULE - SBL									
LOCATION BY MILE POST	PASSING LANE				DRIVING LANE				REMARKS
	CLASS A TYPE II	PATCH REINF.	PAV'T FABRIC	SAW CUTS	CLASS A TYPE II	PATCH REINF.	PAV'T FABRIC	SAW CUTS	
	SQ YD	SQ YD	SQ YD	FOOT	SQ YD	SQ YD	SQ YD	FOOT	
IROQUOIS COUNTY									
292.84									IL RTE. 116
284.25	8	8	8	60	8	8	8	60	
284.20	8	8	8	60	8	8	8	60	
284.10	8	8	8	60	8	8	8	60	
283.80	8	8	8	60	8	8	8	60	
283.04									US RTE. 24
282.30					8	8	8	60	
282.10	13	13	13	68	13	13	13	68	
282.05	13	13	13	68	13	13	13	68	
281.20	8	8	8	60					
281.10	8	8	8	60					
280.80					8	8	8	60	
280.60	8	8	8	60					
280.55					8	8	8	60	
280.50	8	8	8	60	8	8	8	60	
280.13									IL RTE. 54
277.70	8	8	8	60	8	8	8	60	
277.69	8	8	8	60	8	8	8	60	
276.10					8	8	8	60	
275.60					8	8	8	60	
275.00					13	13	13	68	
274.90					8	8	8	60	
274.85					8	8	8	60	
271.30	8	8	8	60	8	8	8	60	
271.15					8	8	8	60	
270.50					8	8	8	60	
269.70					8	8	8	60	
268.60	8	8	8	60	8	8	8	60	
268.40	8	8	8	60	8	8	8	60	
268.20	8	8	8	60	8	8	8	60	
267.90					8	8	8	60	
267.70					8	8	8	60	
267.50					8	8	8	60	
266.70					8	8	8	60	
266.60					8	8	8	60	
SUBTOTALS	139	139	139	976	248	248	248	1764	
FORD COUNTY									
263.49									FORD COUNTY LINE
263.10					8	8	8	60	
262.60					8	8	8	60	
261.70	13	13	13	68	13	13	13	68	
261.42	8	8	8	60	8	8	8	60	
261.40					8	8	8	60	
257.14									CHAMPAIGN COUNTY LINE
SUBTOTALS	21	21	21	128	45	45	45	308	
TOTAL	160	160	160	1104	293	293	293	2072	

FILE NAME =	USER NAME = woodshankr1	DESIGNED - RON WOODSHANK	REVISED -
c:\pwork\pwork\woodshankr1\d0143171\066A38-detail.dgn		DRAWN - RON WOODSHANK	REVISED -
	PLOT SCALE = 100.0000' / IN.	CHECKED -	REVISED -
	PLOT DATE = Mar 31, 2010 - 06:38:45 AM	DATE -	REVISED -

STATE OF ILLINOIS
DEPARTMENT OF TRANSPORTATION

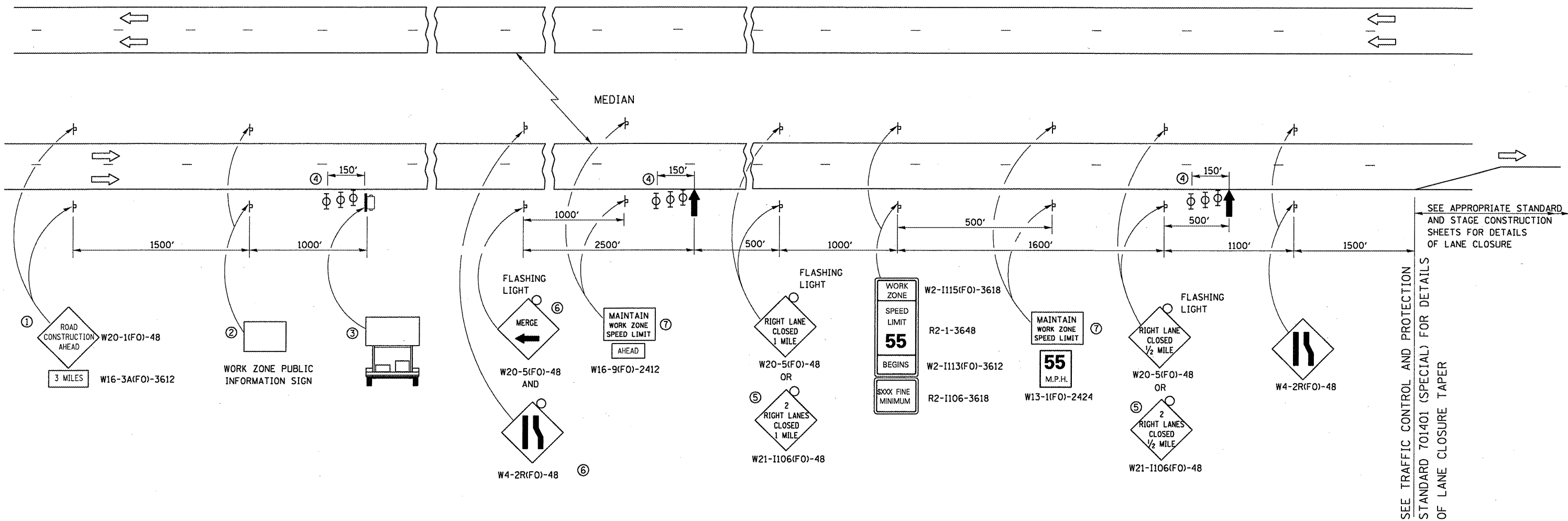
PATCHING SCHEDULES - SBL

SCALE: _____ SHEET NO. 1 OF 1 SHEETS STA. _____ TO STA. _____

F.A.I. RTE.	SECTION	COUNTY	TOTAL SHEETS	SHEET NO.
57	D3 PATCHING 2011-5	**	11	6
ILLINOIS			CONTRACT NO. 66A38	
*** FORD & IROQUOIS				

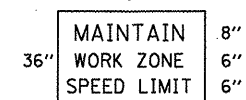
PAVEMENT MARKING SCHEDULE -- NBL				REMARKS
LOCATION BY MILE POST	EPOXY PAVEMENT MARKING LINE 4"		EPOXY PAVEMENT MARKING LINE 6"	
	FEET	FEET	FEET	
	YELLOW	WHITE	WHITE	
FORD COUNTY				CHAMPAIGN COUNTY LINE IROQUOIS COUNTY LINE IL RTE. 54 US RTE. 24 IL RTE. 116
257.14			2	
258.30		6	2	
258.50		6	2	
260.80		6	2	
262.50		6	2	
263.49				
IROQUOIS COUNTY				
264.90		6	2	
265.90		6	2	
269.50		6	2	
271.20		6	2	
272.30		6	2	
277.50		6	2	
278.80		6	2	
280.13				
283.04				
283.10		6	2	
292.84				
SUBTOTAL		72	24	
TOTAL		72	24	

PAVEMENT MARKING SCHEDULE - SBL				REMARKS
LOCATION BY MILE POST	EPOXY PAVEMENT MARKING LINE 4"		EPOXY PAVEMENT MARKING LINE 6"	
	FEET	FEET	FEET	
	YELLOW	WHITE	WHITE	
IROQUOIS COUNTY				IL RTE. 116 US RTE. 24 IL RTE. 54
292.84			2	
284.25	6	6	2	
284.20	6	6	2	
284.10	6	6	2	
283.80	6	6	2	
283.04				
282.30		6	2	
282.10	10	10	3	
282.05	10	10	3	
281.20	6		2	
281.10	6		2	
280.80		6	2	
280.60	6		2	
280.55		6	2	
280.50	6	6	2	
280.13				
277.70	6	6	2	
277.69	6	6	2	
276.10		6	2	
275.60		6	2	
275.00		10	3	
274.90		6	2	
274.85		6	2	
271.30	6	6	2	
271.15		6	2	
270.50		6	2	
269.70		6	2	
268.60	6	6	2	
268.40	6	6	2	
268.20	6	6	2	
267.90		6	2	
267.70		6	2	
267.50		6	2	
266.70		6	2	
266.60		6	2	
SUBTOTAL	104	186	67	
FORD COUNTY LINE				FORD COUNTY LINE CHAMPAIGN COUNTY LINE
263.49				
263.10		6	2	
262.60		6	2	
261.70	10	10	3	
261.42	6	6	2	
261.40		6	2	
257.14				
SUBTOTAL	16	34	11	
TOTAL	340	78		



- ① THE ROAD CONSTRUCTION AHEAD SIGN SHALL BE LOCATED 3 MILES IN ADVANCE OF THE PROJECT LIMITS.
- ② THE MESSAGE AND SIZE OF THE WORK ZONE PUBLIC INFORMATION SIGN SHALL BE AS SPECIFIED BY THE DEPARTMENT.
- ③ TO BE PLACED IN THE MEDIAN WHEN FEASIBLE. THE MESSAGE BOARD SHALL BE USED TO DISPLAY STATUS OF LANES WITHIN THE PROJECT. THE PRIMARY MESSAGES SHALL BE:
"RIGHT LANE CLOSED" / " x MILES AHEAD"
"LEFT LANE CLOSED" / " x MILES AHEAD"
"ALL LANES OPEN"
- ④ THREE, TYPE II BARRICADES, DRUMS, OR VERTICAL BARRICADES AT 50' CENTERS.
- ⑤ THIS SIGN SHALL BE USED WHEN 2 LANES ARE CLOSED.
- ⑥ WHEN THE LEFT LANE IS CLOSED, SWITCH THESE TWO SIGNS AND THE DIRECTION OF THE MERGE ARROW.

⑦ 48"x36" FLUORESCENT ORANGE SIGN WITH BLACK LETTERS, 48"



- ↑ ARROW BOARD
- ☐ PORTABLE CHANGEABLE MESSAGE SIGN
- ⊥ SIGN
- ⊕ TYPE II BARRICADE, DRUM, OR VERTICAL BARRICADE WITH MONODIRECTIONAL FLASHING LIGHT
- ↘ LANE DROP ARROW - SEE STANDARD 780001
- ▨ TEMPORARY THERMOPLASTIC RUMBLE STRIPS

GENERAL NOTE:

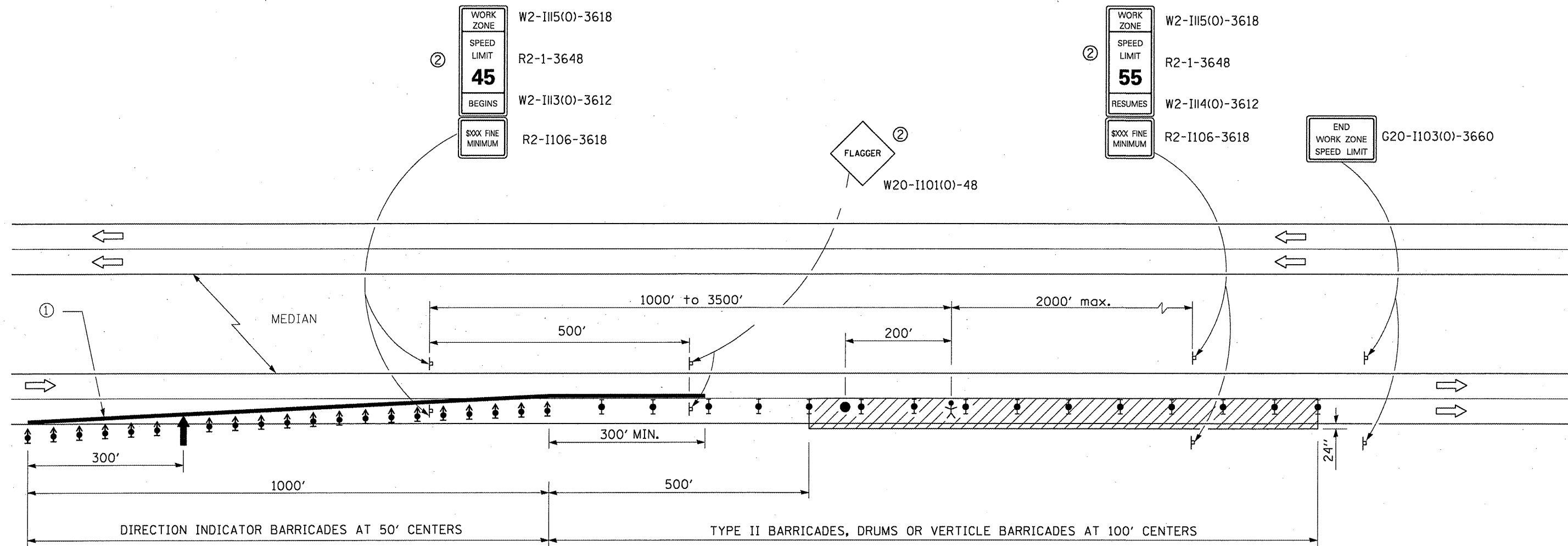
THIS STANDARD IS USED WHERE AT ANY TIME A LANE IS CLOSED ON A FREEWAY/EXPRESSWAY.

WHEN THE LEFT LANE IS CLOSED, LEFT LANE CLOSED SIGNS SHALL BE SUBSTITUTED FOR THE RIGHT LANE CLOSED SIGNS.

THE FIRST TWO SIGNS AND THE MESSAGE BOARD ARE STATIONARY. THE OTHER SIGNS AND ARROWBOARDS SHALL BE MOVED AS NECESSARY TO MAINTAIN THE REQUIRED DISTANCE FROM THE START OF THE LANE CLOSURE TAPER(S).

WHEN WORK OPERATIONS ARE NEAR MAJOR INTERCHANGES THE CONTRACTOR SHALL FURNISH ADDITIONAL MESSAGE BOARDS AND UTILIZED AT THE DIRECTION OF THE ENGINEER.

FILE NAME =	USER NAME = woodshankr1	DESIGNED - RON WOODSHANK	REVISED -	STATE OF ILLINOIS DEPARTMENT OF TRANSPORTATION	TRAFFIC CONTROL AND PROTECTION STANDARD 701400 (SPECIAL) DETAILS	F.A.I. RTE.	SECTION	COUNTY	TOTAL SHEETS	SHEET NO.
cd:\pvt\work\PIWEDDT\WOODSHANKRL\02143171\0366A38-details.dgn	DRAWN - RON WOODSHANK	REVISED -	D3 PATCHING 2011-5			**	11	8		
PLOT SCALE = 100.0000' / IN.	CHECKED -	REVISED -	CONTRACT NO. 66A38			** FORD & IROQUOIS				
PLOT DATE = Mar 31, 2010 - 07:53:39 AM	DATE -	REVISED -	SCALE: SHEET NO. 1 OF 1 SHEETS			STA. TO STA.	ILLINOIS			



SEE TRAFFIC CONTROL AND PROTECTION STANDARD 701400 (SPECIAL) FOR APPROACH TO LANE CLOSURE DETAILS

SYMBOLS

- ARROW BOARD
- WORK AREA
- WORKER
- SIGN
- DIRECTION INDICATOR BARRICADE WITH STEADY BURN MONODIRECTIONAL LIGHT
- TYPE II BARRICADES, DRUM OR VERTICAL BARRICADE WITH STEADY BURN MONODIRECTIONAL LIGHT
- Flagger with traffic control sign

- ① REFLECTORIZED TEMPORARY PAVEMENT MARKING TAPE SHALL BE PLACED THROUGHOUT THE TAPER AND FOR 300' ALONGSIDE THE WORK AREA WHEN THE CLOSURE TIME IS GREATER THAN FOURTEEN DAYS. THE EDGE LINE SHALL BE WHITE FOR RIGHT LANE CLOSURES AND YELLOW FOR LEFT LANE CLOSURES. TEMPORARY RAISED REFLECTORIZED PAVEMENT MARKERS AT 25' CENTERS SHALL BE USED TO SUPPLEMENT THE PAVEMENT MARKING TAPE.
- ② WORK ZONE SPEED LIMITS SIGNS AND FLAGGER SIGNS SHALL BE MOVED AS NECESSARY TO MAINTAIN THE REQUIRED SPACING BETWEEN THE SIGNS AND THE WORKERS IN EACH SEPARATE WORK ACTIVITY.

GENERAL NOTES

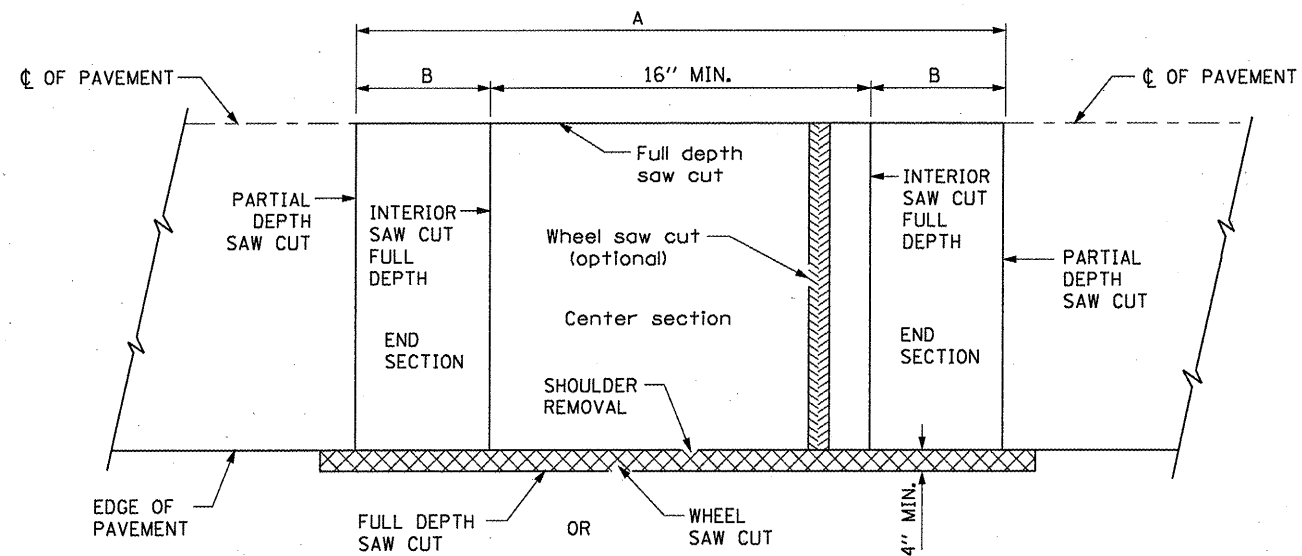
THIS STANDARD IS USED WHERE AT ANY TIME ANY VEHICLE, EQUIPMENT, WORKERS OR THEIR ACTIVITIES WILL ENCROACH ON THE LANE ADJACENT TO THE SHOULDER OR ON THE SHOULDER WITHIN 24" OF THE EDGE OF PAVEMENT.

THIS STANDARD MUST ALWAYS BE USED IN COMBINATION WITH TRAFFIC CONTROL AND PROTECTION DETAIL 701400 (SPECIAL).

THIS STANDARD ALSO APPLIES WHEN WORK IS BEING PERFORMED IN THE LEFT LANE. UNDER THESE CONDITIONS, THE SET UP WOULD BE A MIRROR IMAGE TO WHAT IS SHOWN.

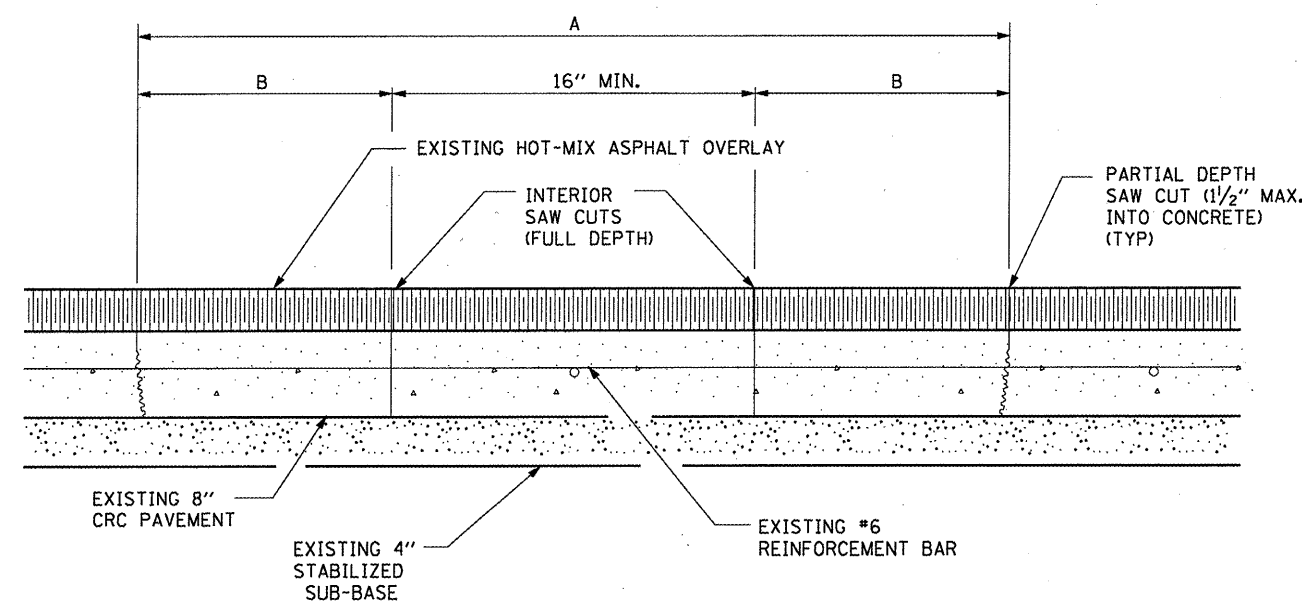
A CHECK BARRICADE SHALL BE PLACED IN THE MIDDLE OF THE CLOSED LANE AND AT THE SHOULDER AT 1000' CENTER.

FILE NAME =	USER NAME = woodshankr1	DESIGNED - RON WOODSHANK	REVISED - -----	STATE OF ILLINOIS DEPARTMENT OF TRANSPORTATION	TRAFFIC CONTROL AND PROTECTION STANDARD 701401 (SPECIAL) DETAILS	F.A.I. RTE.	SECTION	COUNTY	TOTAL SHEETS	SHEET NO.
ct:\pw\work\PW1007\WOODSHANKRL\0143171\0366A38-details.dgn	DRAWN - RON WOODSHANK	REVISED - -----	57			D3 PATCHING 2011-5	**	11	9	
PLOT SCALE = 100.0000' / IN.	CHECKED - -----	REVISED - -----	CONTRACT NO. 66A38							
PLOT DATE = Mar 31, 2010 - 07:53:45 AM	DATE - -----	REVISED - -----	** FORD & TROQUOIS							
				SCALE: ----- SHEET NO. 1 OF 1 SHEETS STA. ----- TO STA. -----		ILLINOIS				

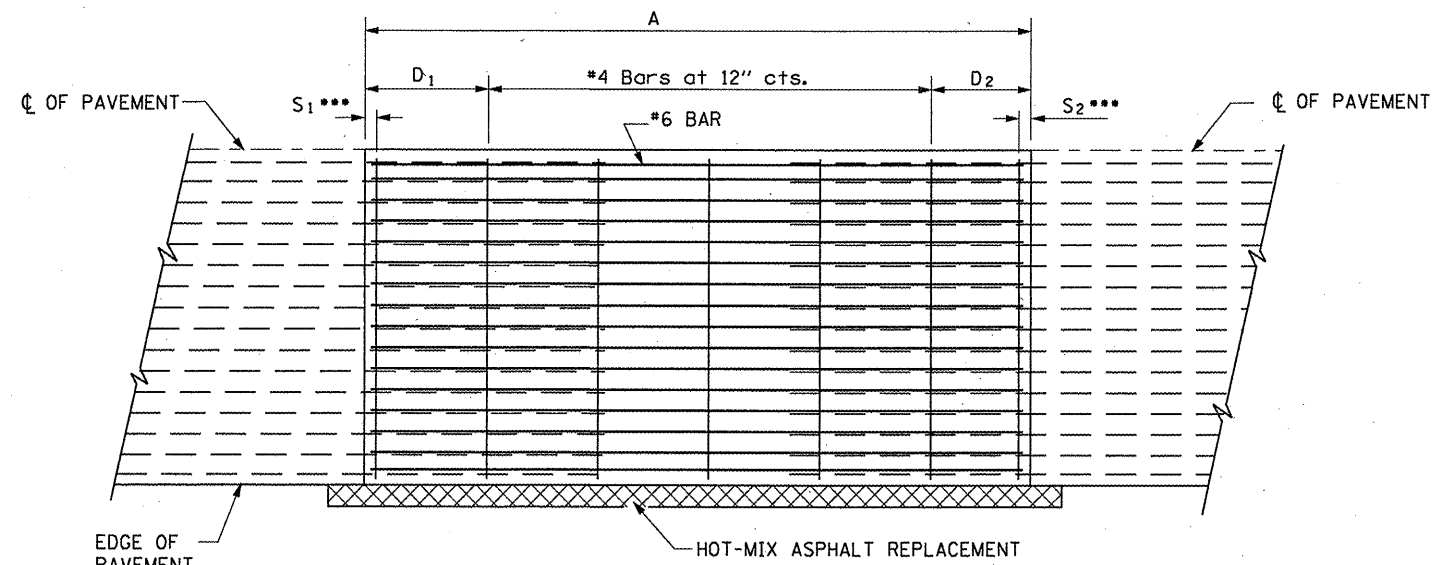


EXISTING PAVEMENT SAWING DETAIL
(AGAINST BITUMINOUS SHOULDER)

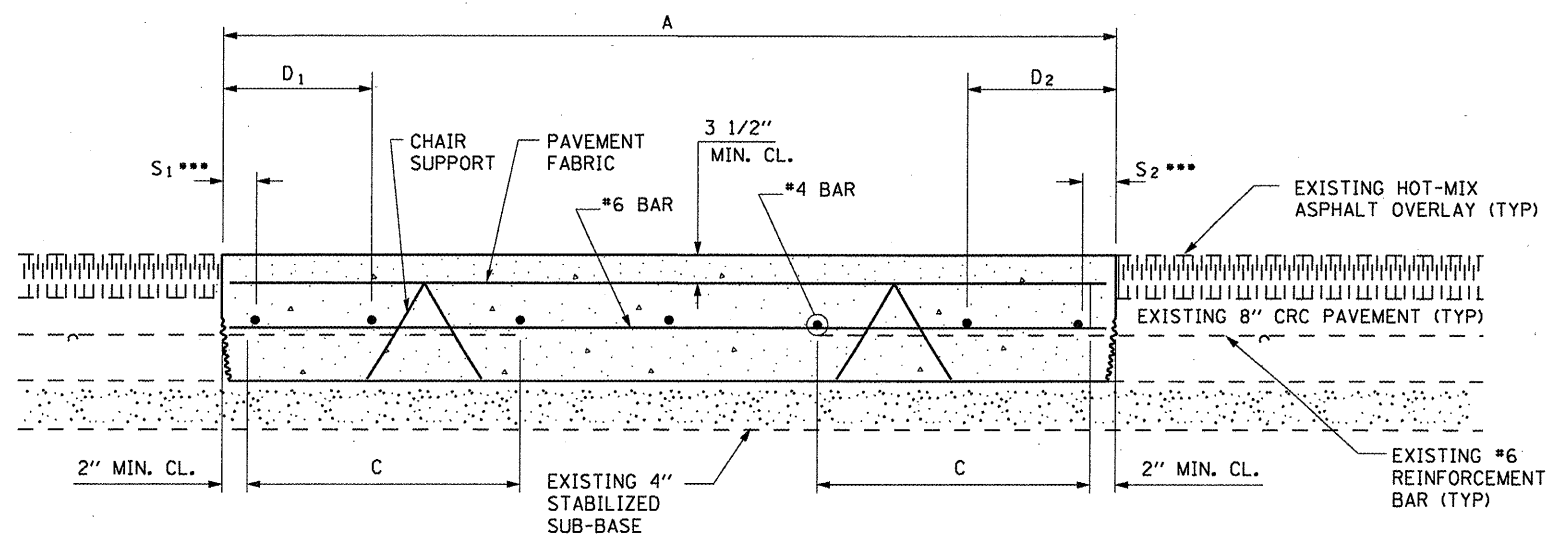
EXISTING LONGITUDINAL REINFORCEMENT BARS	A (min.)	B (min.)	C (min.)
No. 6	6'-0"	24"	19"



EXISTING PAVEMENT SAW CUTTING DETAIL

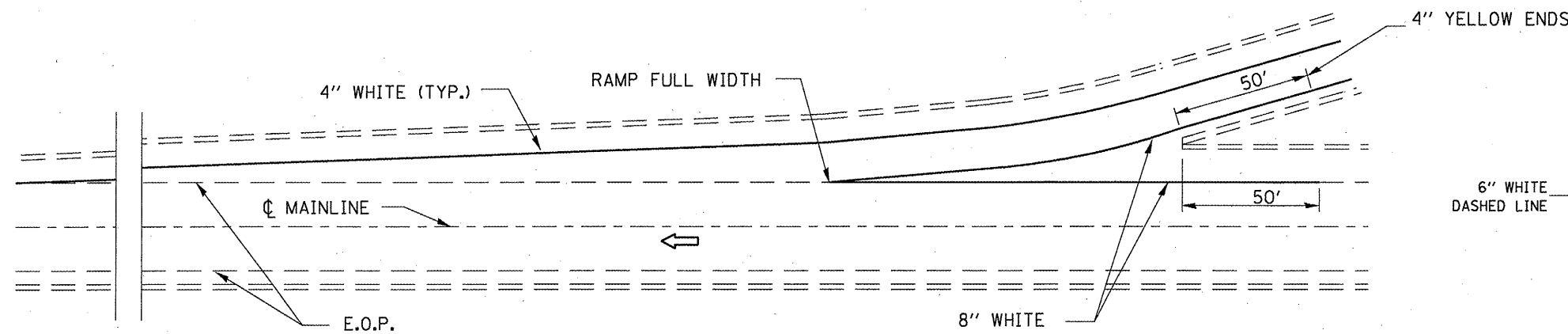


PROPOSED PAVEMENT DETAIL
(AGAINST BITUMINOUS SHOULDER)

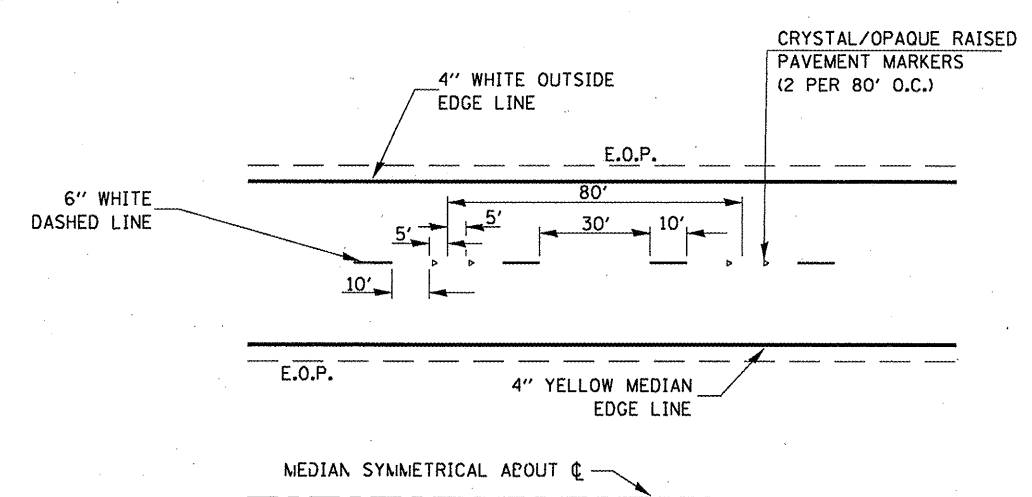


PROPOSED CLASS A PATCHING DETAIL

- NOTES:**
- EVERY 3rd INTERSECTION MUST BE TIED
 - LAP NEW REINFORCEMENT WITH EXISTING LONGITUDINAL REINFORCEMENT
 - VARIABLES: WHERE S₁ AND S₂ ARE 2 1/2" MIN. AND 12" MAX. D₁ = 2(S₁) AND D₂ = 2(S₂)

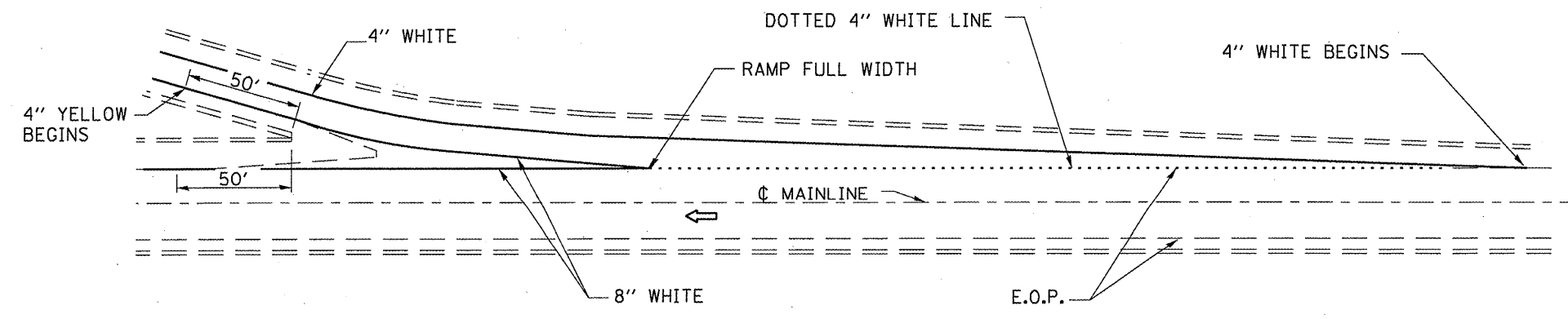


TYPICAL PAVEMENT MARKING FOR ENTRANCE RAMP TERMINALS



**TYPICAL PAVEMENT MARKINGS
FAI 57**

NOTE:
 WHEN PATCHING IS ADJACENT TO 8" PAVEMENT MARKING LINE
 THE 8" STRIP SHALL BE REPLACED WITH TWO 4" LINES.
 RAISED REFLECTIVE PAVEMENT MARKERS THAT FALL WITHIN
 PATCHED BOUNDARIES WILL NOT BE REPLACED.



TYPICAL PAVEMENT MARKINGS FOR EXIT RAMP TERMINALS