

F.A.P. RTE.	SECTION	COUNTY	TOTAL SHEETS	SHEET NO.
669	(11)RS-9,L-2,N,TS-4	TAZEWELL	102*	1

ILLINOIS CONTRACT NO. 68590
*102+3=105

D-94-058-06



STATE OF ILLINOIS
DEPARTMENT OF TRANSPORTATION
DIVISION OF HIGHWAYS
PROPOSED
HIGHWAY PLANS

FAP 669 ROUTE IL 29
SECTION (11)RS-9,L-2,N,TS-4
PROJECT HSIP-F-0669(032)
TYPE of IMPROVEMENT: INTERSECTION RESURFACING AND SAFETY
TAZEWELL COUNTY
C-94-067-06

FOR INDEX OF SHEETS, SEE SHEET NO. 2

HIGHWAY STANDARDS

280001-05	606301-04	805001-01	877011-04
420001-07	701426-03	814001-02	878001-08
442101-07	701601-06	814006-02	880001-01
482001-02	701602-04	836001	880006-01
602306-02	701701-06	857001-01	886001-01
602601-02	701901-01	873001-02	886006-01
606001-04	780001-02	877001-04	
606006-02	781001-03	877002-01	

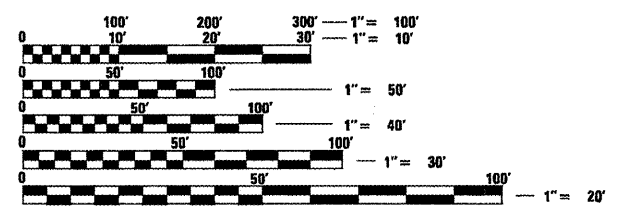
DISTRICT STANDARDS

- 406101-D4
- 423001-D4
- 440001-D4
- 604301-D4
- 606201-D4
- 780001-D4

IL 29:
STA. 0+00 TO STA. 8+50
STA. 242+17 TO 247+80
(STA. EQUATION:
STA. 242+17.09 BK=
STA. 0+00 AH)

WESLEY RD TO MAIN ST.:
STA. 15+00 TO STA. 23+50

ADT = 31300
 MU = 700
 SU = 650

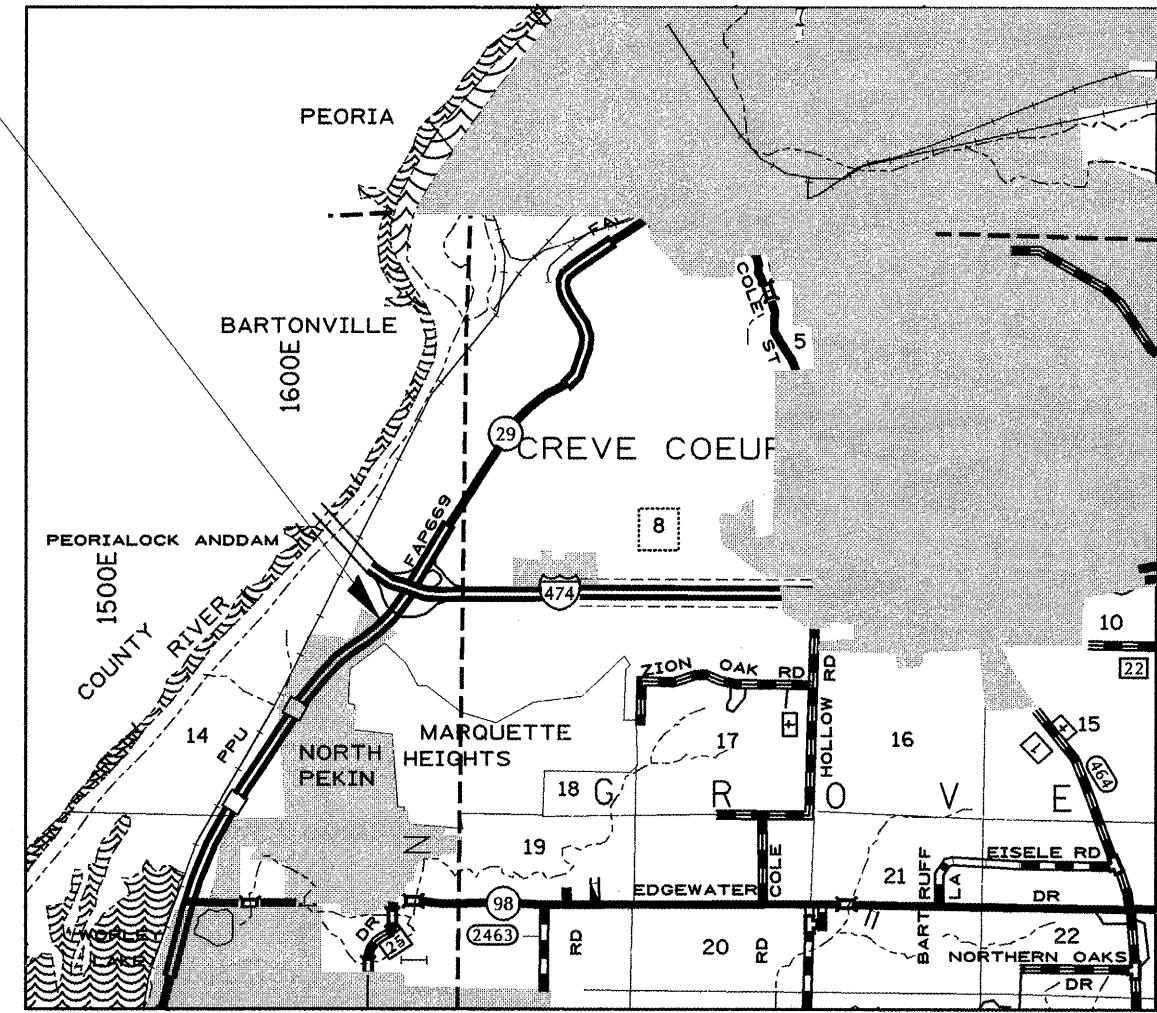


FULL SIZE PLANS HAVE BEEN PREPARED USING STANDARD ENGINEERING SCALES. REDUCED SIZED PLANS WILL NOT CONFORM TO STANDARD SCALES. IN MAKING MEASUREMENTS ON REDUCED PLANS, THE ABOVE SCALES MAY BE USED.

J.U.L.I.E.
 JOINT UTILITY LOCATION INFORMATION FOR EXCAVATION
 1-800-892-0123
 OR 811

PROJECT ENGINEER: CHRISTOPHER MAUSHARD
PROJECT MANAGER: SOBHI LABABIDI

CONTRACT NO. 68590
CATALOG NO. 033256-00D



GROSS LENGTH = 1,110 FT. = 0.21 MILE
 NET LENGTH = 1,110 FT. = 0.21 MILE



PROJECT DESCRIPTION:
 RESURFACING ON IL 29 FROM N. OF WESLEY RD TO N. OF PARK DR. IN N. PEKIN, INCLUDES OFFSETTING LT TURN LANES ON IL 29 AND REALIGNMENT OF RT TURN LANE ON WESLEY DR. AND UPGRADING TRAFFIC SIGNALS AND INTERSECTION LIGHTING.

STATE OF ILLINOIS
 DEPARTMENT OF TRANSPORTATION
 DIVISION OF HIGHWAYS

SUBMITTED 3/18 2010

[Signature]
 DEPUTY DIRECTOR OF HIGHWAYS, REGION ENGINEER

May 7 2010
[Signature]
 acting ENGINEER OF DESIGN AND ENVIRONMENT

May 7 2010
[Signature]
 DIRECTOR OF HIGHWAYS, CHIEF ENGINEER

PRINTED BY THE AUTHORITY
OF THE STATE OF ILLINOIS