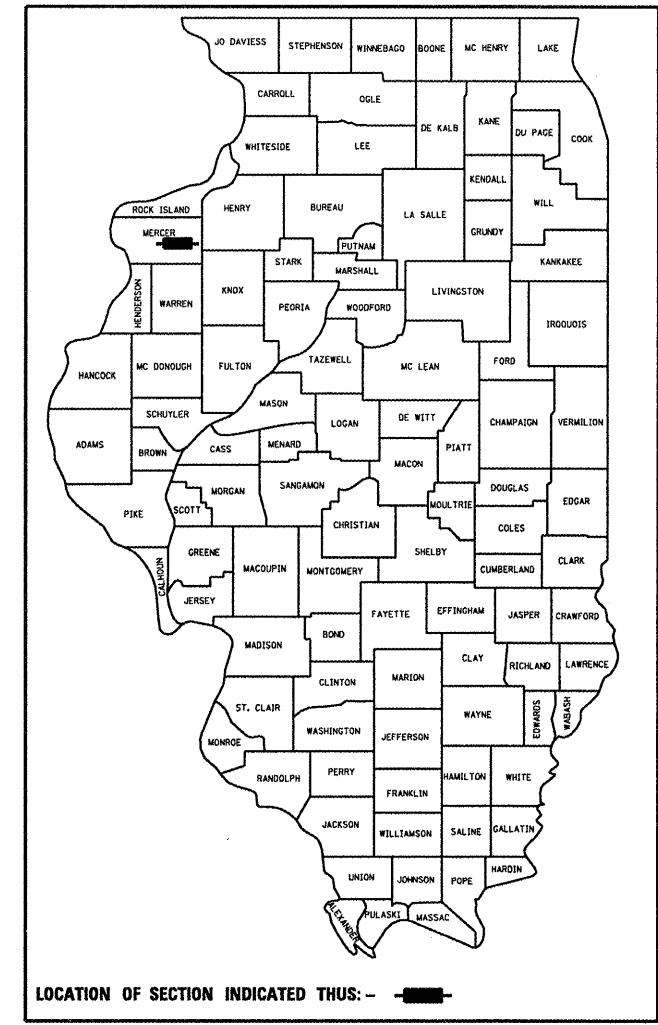


F.A.P. RTE.	SECTION	COUNTY	TOTAL SHEETS	SHEET NO.
639	(125)I-1	MERCER	33	1
		ILLINOIS	CONTRACT NO. 68929	

D-94-095-09



THIS PROJECT CONSISTS OF SLOPE REPAIR, HEADWALL REMOVAL, TWO BOX CULVERT EXTENSIONS, AND OTHER COLLATERAL WORK.

STATE OF ILLINOIS
DEPARTMENT OF TRANSPORTATION
DIVISION OF HIGHWAYS

SUBMITTED April 4 20 10
[Signature]
DEPUTY DIRECTOR OF HIGHWAYS, REGION ENGINEER

May 7 20 10
Scott E. Stitt P.E.
acting ENGINEER OF DESIGN AND ENVIRONMENT

May 7 20 10
Christine M. Reader
DIRECTOR OF HIGHWAYS, CHIEF ENGINEER

PRINTED BY THE AUTHORITY OF THE STATE OF ILLINOIS

STATE OF ILLINOIS
DEPARTMENT OF TRANSPORTATION
DIVISION OF HIGHWAYS

**PROPOSED
HIGHWAY PLANS**

FAP ROUTE 639 (IL 17)
SECTION (125)I-1
CONTRACT MAINTENANCE
MERCER COUNTY

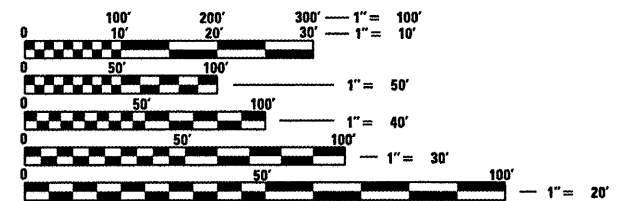
C-94-156-09

INDEX OF SHEETS

1. COVER SHEET
 2. COMMITMENTS/GENERAL NOTES
 3. SUMMARY OF QUANTITIES
 4. TYPICAL SECTION
 - 5-6. PLAN VIEWS
 - 7-8. SCHEDULE OF QUANTITIES
 9. R.O.W. PLAT
 10. MISC. DETAILS - CULVERT NO. 1
 11. CONCRETE COLLAR DETAIL - LOCATION # 2
 12. UNSUITABLE EXCAVATION DETAIL
 13. SOIL BORING LOG
 - 14-29. CROSS SECTIONS
 - 30-33. DISTRICT STANDARDS
- 280001-D4
281001-D4
540401-D4

HIGHWAY STANDARDS

- 280001-05
- 666001-01
- 701001-02
- 701006-03
- 701011-02
- 701201-03
- 701301-03
- 701901-01



FULL SIZE PLANS HAVE BEEN PREPARED USING STANDARD ENGINEERING SCALES. REDUCED SIZED PLANS WILL NOT CONFORM TO STANDARD SCALES. IN MAKING MEASUREMENTS ON REDUCED PLANS, THE ABOVE SCALES MAY BE USED.

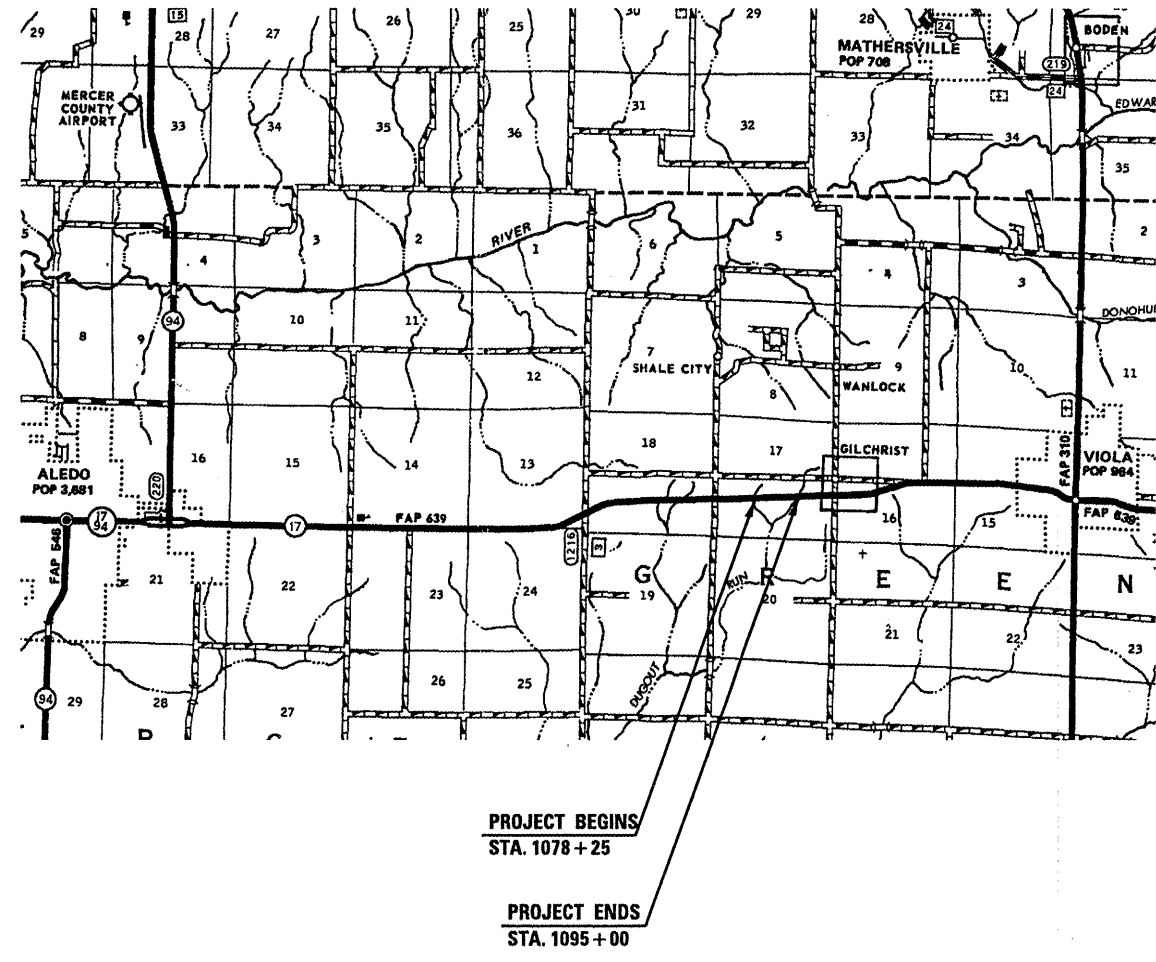
J.U.L.I.E.
JOINT UTILITY LOCATION INFORMATION FOR EXCAVATION
1-800-892-0123
OR 811

PROJECT ENGINEER: M. ADDIS (309)671-3495
PROJECT MANAGER: K. KILMAN (309)671-3481
CONTRACT NO. 68929
CATALOG NO. 034311-00D

ADT = 2950 (2008)
7.6% TRUCKS

GROSS LENGTH = 1675 FT. = 0.317 MILE
NET LENGTH = 400 FT. = 0.075 MILE

REVISI **REVISED 5-28-2010**



SUMMARY OF QUANTITIES

S P L I T T Y	CODE	ITEM DESCRIPTION	UNIT	TOTAL QTY.	CONST. TYPE CODE MERCER COUNTY Y007 100% STATE
	20100110	TREE REMOVAL (6 TO 15 UNITS DIAMETER)	UNIT	30	30
	20100500	TREE REMOVAL, ACRES	ACRE	0.1	0.1
	20200100	EARTH EXCAVATION	CU YD	528	528
	20201200	REMOVAL AND DISPOSAL OF UNSUITABLE MATERIAL	CU YD	76	76
	20400800	FURNISHED EXCAVATION	CU YD	1256	1256
	20700220	POROUS GRANULAR EMBANKMENT	CU YD	23	23
	21001000	GEOTECHNICAL FABRIC FOR GROUND STABILIZATION	SQ YD	155	155
	21101615	TOPSOIL FURNISH ^{AND} PLACE, 4"	SQ YD	1785	1785
	25000300	SEEDING, CLASS 3	ACRE	0.3	0.3
	25000400	NITROGEN FERTILIZER NUTRIENT	POUND	27	27
	25000500	PHOSPHORUS FERTILIZER NUTRIENT	POUND	27	27
	25000600	POTASSIUM FERTILIZER NUTRIENT	POUND	27	27
	25100635	HEAVY DUTY EROSION CONTROL BLANKET	SQ YD	1785	1785
	28000250	TEMPORARY EROSION CONTROL SEEDING	POUND	30	30
	28000400	PERIMETER EROSION BARRIER	FOOT	105	105
	28100207	STONE RIPRAP, CLASS A 4	TON	252	252
	50104400	CONCRETE HEADWALL REMOVAL	EACH	2	2
	50300225	CONCRETE STRUCTURES	CU YD	0.5	0.5
	50800105	REINFORCEMENT BARS	POUND	70	70
	54001001	BOX CULVERT END SECTION, CULVERT NO. 1	EACH	1	1
	54001002	BOX CULVERT END SECTION, CULVERT NO. 2	EACH	1	1
	54002020	EXPANSION BOLTS 3/4 INCH	EACH	12	12
	54010505	PRECAST CONCRETE BOX CULVERT 5' X 5'	FOOT	39	39
	54010404	PRECAST CONCRETE BOX CULVERT 4' X 4'	FOOT	47	47
	54248510	CONCRETE COLLAR	CU YD	3.1	3.1
	66600105	FURNISHING AND ERECTING RIGHT-OF-WAY MARKERS	EACH	8	8
	67000400	ENGINEER'S FIELD OFFICE, TYPE A	CAL MO	2	2
	67100100	MOBILIZATION	L SUM	1	1
	70100450	TRAFFIC CONTROL AND PROTECTION, STANDARD 701201	L SUM	1	1
	Z0013798	CONSTRUCTION LAYOUT	L SUM	1	1
	Z0054500	ROCK FILL	TON	127	127
	X0325758	MANHOLES, TYPE A, 8' DIAMETER, TYPE B GRATE	EACH	1	1
	X0323986	TEMPORARY SOIL RETENTION SYSTEM	SQ FT	720	720



REVISED
5-28-2010

FILE NAME =
D468704-sht-plan.dgn

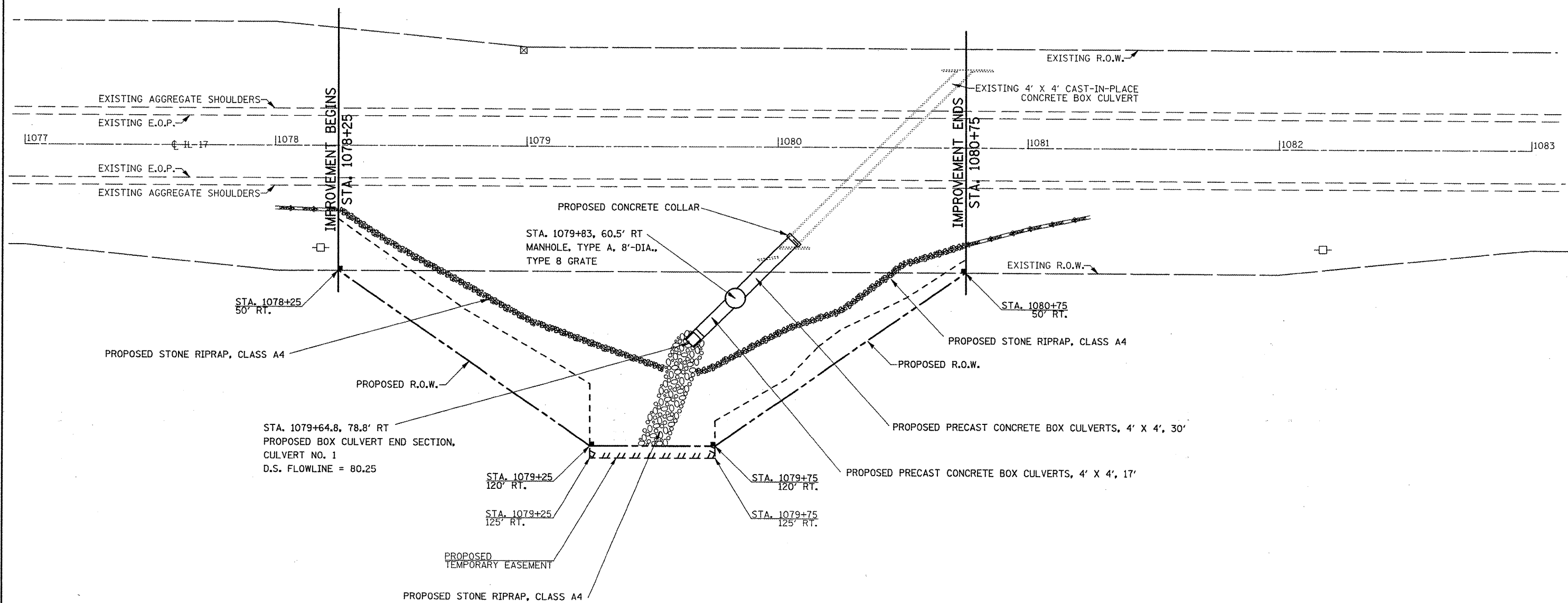
USER NAME = longer
 DESIGNED -
 DRAWN -
 PLOT SCALE = 40.0000' / IN.
 CHECKED -
 PLOT DATE = 4/8/2010
 DATE -

REVISIONS
 REVISION
 REVISION
 REVISION
 REVISION

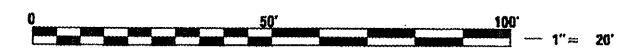
STATE OF ILLINOIS
DEPARTMENT OF TRANSPORTATION

SUMMARY OF QUANTITIES
 SCALE: _____ SHEET NO. 1 OF 1 SHEETS STA. _____ TO STA. _____

F.A.P. RTE.	SECTION	COUNTY	TOTAL SHEETS	SHEET NO.
639	D4 CULVERT REPAIR	MERCER	33	3
CONTRACT NO. 68929			ILLINOIS FED. AID PROJECT	



**SHEET
REVISED**
5-28-2010

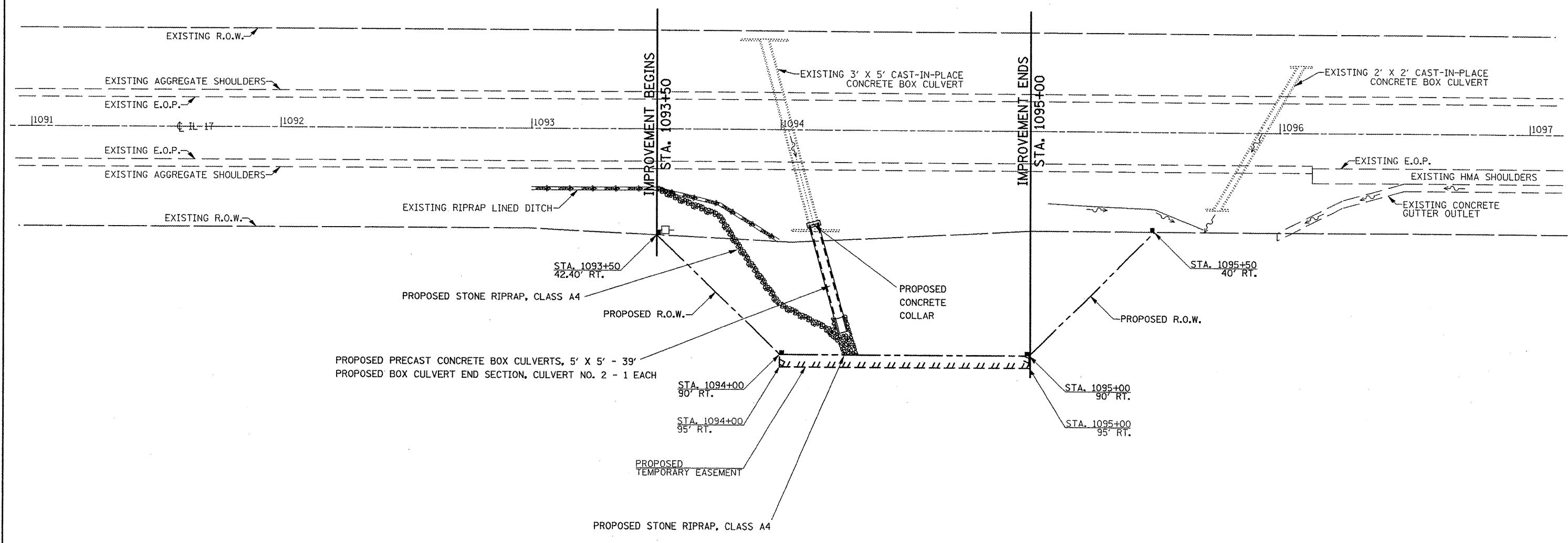


FILE NAME = 0468784-sht-plan.dgn	USER NAME = horstkj	DESIGNED - KKK	REVISED -
		DRAWN - KKK	REVISED -
		CHECKED -	REVISED -
		DATE -	REVISED -

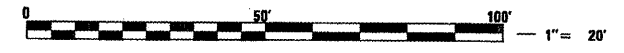
STATE OF ILLINOIS
DEPARTMENT OF TRANSPORTATION

PLAN VIEW IL 17
CULVERT EXTENSION - LOCATION 1
 SCALE: 1"=20' SHEET NO. 1 OF 1 SHEETS STA. 1080+43

F.A.P. RTE.	SECTION	COUNTY	TOTAL SHEETS	SHEET NO.
639	(125)-1	MERCER	33	5
CONTRACT NO. 68929				
ILLINOIS FED. AID PROJECT				



**SHEET
REVISED**
5-28-2010



FILE NAME = D468784-sht-plan.dgn	USER NAME = horatkj	DESIGNED - KKK	REVISED -
		DRAWN - KKK	REVISED -
		CHECKED -	REVISED -
		DATE - 5/27/2010	REVISED -

STATE OF ILLINOIS
DEPARTMENT OF TRANSPORTATION

PLAN VIEW IL 17
CULVERT EXTENSION - LOCATION 2
 SCALE: 1"=20' SHEET NO. 1 OF 1 SHEETS STA. 1094+03

F.A.P. RTE.	SECTION	COUNTY	TOTAL SHEETS	SHEET NO.
639	(125)I-1	MERCER	33	6
CONTRACT NO. 68929				
ILLINOIS FED. AID PROJECT				

SEEDING, CLASS 3	
LOCATION	ACRE
LOCATION #1	0.2
LOCATION #2	0.1
TOTAL	0.3

TOPSOIL FURNISH & PLACE 4"	
LOCATION	SQ. YD.
LOCATION #1	1135.0
LOCATION #2	650.0
TOTAL	1785.0

LOCATION	FURNISHING AND ERECTING RIGHT-OF-WAY MARKERS
	EACH
LOCATION #1	
STA 1078+25 OFFSET 50' RT	1
STA 1079+25 OFFSET 120' RT	1
STA 1079+75 OFFSET 120' RT	1
STA 1080+75 OFFSET 50' RT	1
LOCATION #2	
STA 1093+50 OFFSET 42.40' RT	1
STA 1094+00 OFFSET 90' RT	1
STA 1095+00 OFFSET 90' RT	1
STA 1095+50 OFFSET 40' RT	1
TOTALS	8

TEMPORARY EROSION CONTROL SEEDING	
LOCATION	POUND
LOCATION #1	20.0
LOCATION #2	10.0
TOTAL	30.0

PERIMETER EROSION BARRIER	
LOCATION	FOOT
LOCATION #1	75.0
LOCATION #2	30.0
TOTAL	105.0

LOCATION	TREE REMOVAL (6 TO 15 UNITS DIAMETER)	TREE REMOVAL, ACRES
	UNIT	ACRE
LOCATION #1	30	
LOCATION #2		0.1
TOTALS	30	0.1

NITROGEN FERTILIZER NUTRIENT	
LOCATION	POUND
LOCATION #1	18.0
LOCATION #2	9.0
TOTAL	27.0

STONE RIPRAP, CLASS A4	
LOCATION	TON
LOCATION #1	211.0
LOCATION #2	41.0
TOTAL	252.0

PHOSPHORUS FERTILIZER NUTRIENT	
LOCATION	POUND
LOCATION #1	18.0
LOCATION #2	9.0
TOTAL	27.0

EARTH EXCAVATION	
LOCATION	CU YD
LOCATION #1	495
LOCATION #2	33
TOTAL	528

POTASSIUM FERTILIZER NUTRIENT	
LOCATION	POUND
LOCATION #1	18.0
LOCATION #2	9.0
TOTAL	27.0

FURNISHED EXCAVATION			
LOCATION	CUT*	FILL	CY
LOCATION #1	371.3	815.3	444.1
LOCATION #2	24.7	836.8	812.1
TOTAL			1256

HEAVY DUTY EROSION CONTROL BLANKET	
LOCATION	SQ. YD.
LOCATION #1	1135.0
LOCATION #2	650.0
TOTAL	1785.0

* EARTH EXCAVATION WITH 25% SHRINKAGE



SHEET
REVISED
5-28-2010

FILE NAME =
D468784-sht-plan.dgn

USER NAME = horstkj	DESIGNED -	REVISED -
PLOT SCALE = 48.0000' / IN.	DRAWN -	REVISED -
PLOT DATE = 5/27/2010	CHECKED -	REVISED -
	DATE -	REVISED -

**STATE OF ILLINOIS
DEPARTMENT OF TRANSPORTATION**

SCHEDULE OF QUANTITIES

SCALE: SHEET NO. 1 OF 1 SHEETS STA. TO STA.

F.A.P. RTE.	SECTION	COUNTY	TOTAL SHEETS	SHEET NO.
639	D4 CULVERT REPAIR	MERCER	33	7
CONTRACT NO. 68929				
ILLINOIS FED. AID PROJECT				

LOCATION	ROCK FILL	POROUS GRANULAR EMBANKMENT	GEOTECHNICAL FABRIC FOR GROUND STABILIZATION	REMOVAL AND DISPOSAL OF UNSUITABLE MATERIAL
	TON	CU YD	SQ YD	CU YD
LOCATION #1	127	10	118	59
LOCATION #2		13	37	17
TOTALS	127	23	155	76

LOCATION	CONCRETE HEADWALL REMOVAL	BOX CULVERT END SECTION CULVERT NO. 1	BOX CULVERT END SECTION CULVERT NO. 2	PRECAST CONCRETE BOX CULVERT 5' X 5'*	PRECAST CONCRETE BOX CULVERT 4' X 4'*
	EACH	EACH	EACH	FOOT	FOOT
LOCATION #1	1	1			47
LOCATION #2	1		1	39	
TOTALS	2	1	1	39	47

*NOTE: THE DESIGN FILL HEIGHT FOR EACH CULVERT IS 15' AND THE APPLICABLE AASHTO SPEC. FOR EACH CULVERT IS M259.

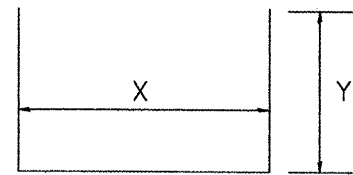
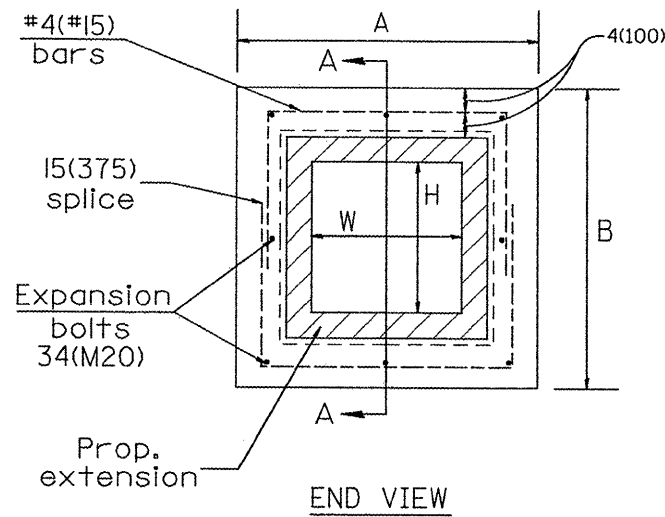
LOCATION	CONCRETE COLLAR	MANHOLE, TY A 8' DIA. WITH TYPE 8 GRATE	EXPANSION BOLTS 3/4 INCH	REINFORCEMENT BARS
	CU YD	EACH	EACH	POUND
LOCATION #1 - CONCRETE COLLAR	0.9			32
LOCATION #1		1		
LOCATION #2 - CONCRETE COLLAR	2.2		12	38
TOTALS	3.1	1	12	70

TEMPORARY SOIL RETENTION SYSTEM			
	HEIGHT	WIDTH	AREA
	FOOT	FOOT	SQ FT
LOCATION #1	15	VARIES 10 TO 40	375
LOCATION #2	15	VARIES 10 TO 40	345
TOTAL			720

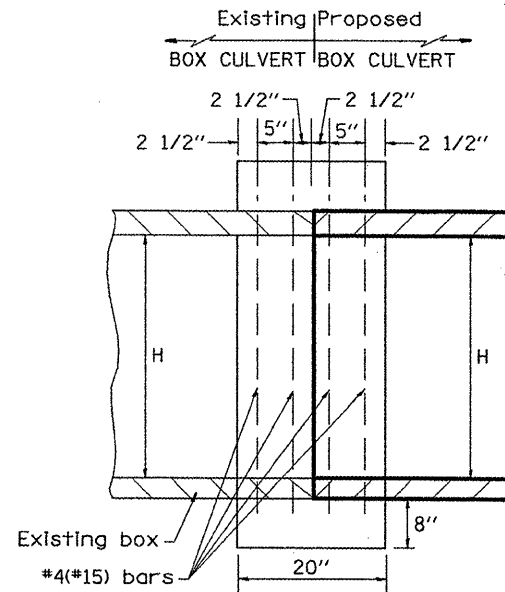


SHEET REVISED
5-28-2010

FILE NAME = 0468784-sht-plan.dgn	USER NAME = horstkj	DESIGNED -	REVISED -	STATE OF ILLINOIS DEPARTMENT OF TRANSPORTATION	SCHEDULE OF QUANTITIES				F.A.P. RTE. 639	SECTION D4 CULVERT REPAIR	COUNTY MERCER	TOTAL SHEETS 33	SHEET NO. 8
		DRAWN -	REVISED -		SCALE:	SHEET NO. 1 OF 1 SHEETS	STA.	TO STA.	CONTRACT NO. 68929				
		CHECKED -	REVISED -		ILLINOIS FED. AID PROJECT								
		DATE -	REVISED -										



#4(#15) U BAR
FOUR REQUIRED
PER COLLAR



SECTION A - A

GENERAL NOTES

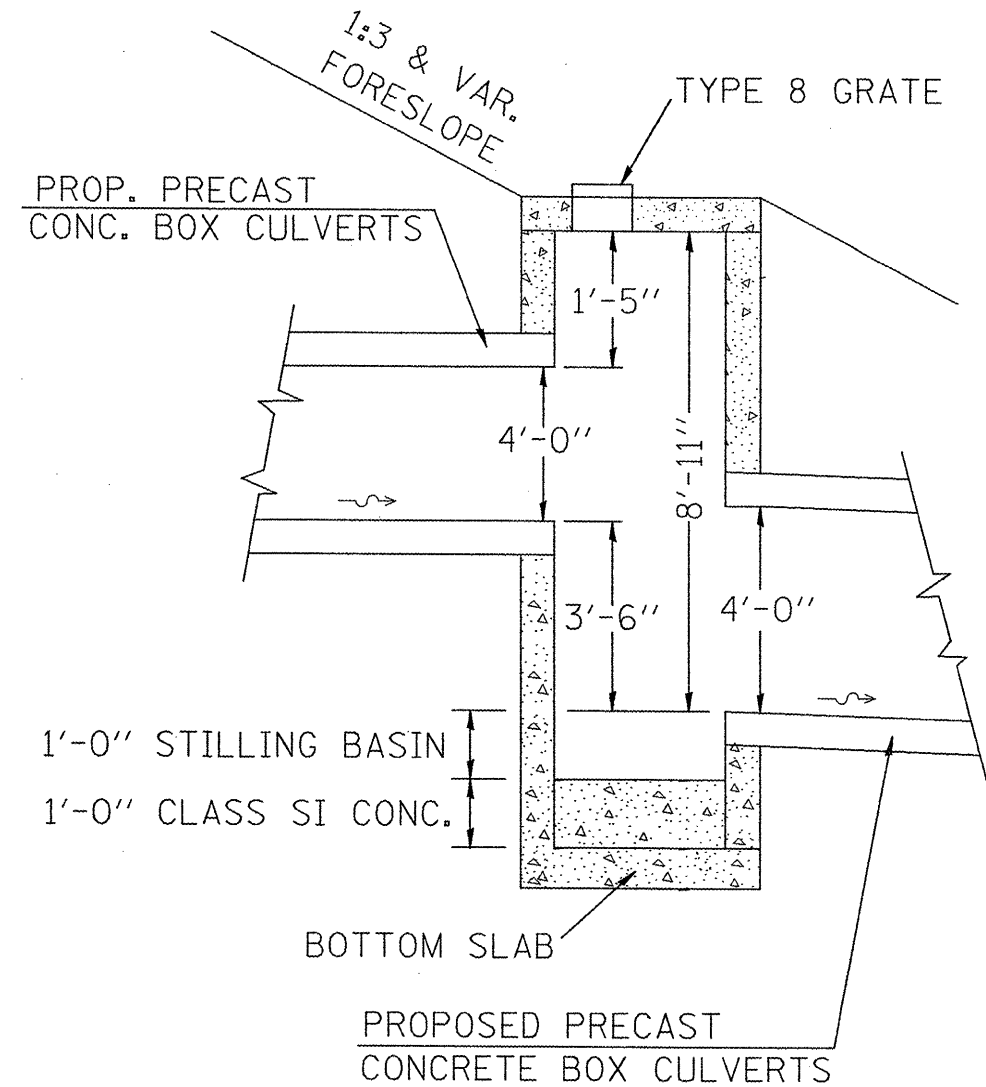
- The collar shall be constructed entirely of CLASS SI CONCRETE and in accordance with the applicable portions of section 503 of the Standard Specifications. REINFORCEMENT BARS shall conform to section 508.
- Expansion bolts shall consist of approved expansion anchors, and 3/4(M20) hook bolts which conform to Section 1006.09. These bolts shall extend at least 8(200) into the new concrete.

EXIST. BOX		PROP. BOX		CLASS SI CONCRETE			REBARS			EXPANSION BOLTS EACH	
W	H	W	H	CU. YD. (m ³)	A	B	T	X	Y		LBS. (kg)
4'	4'	4'	4'	0.90	6'-2"	6'-2"	8"	5'-6"	3'-3"	32	N/A

#4 BAR WEIGHT= 0.668LB/FT

COLLAR DETAIL

▲ SHEET
REVISED
5-28-2010



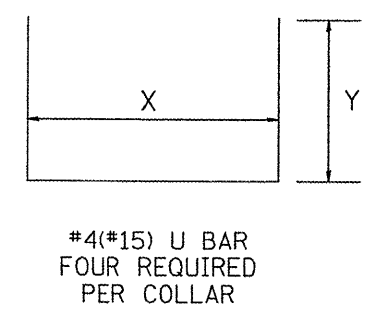
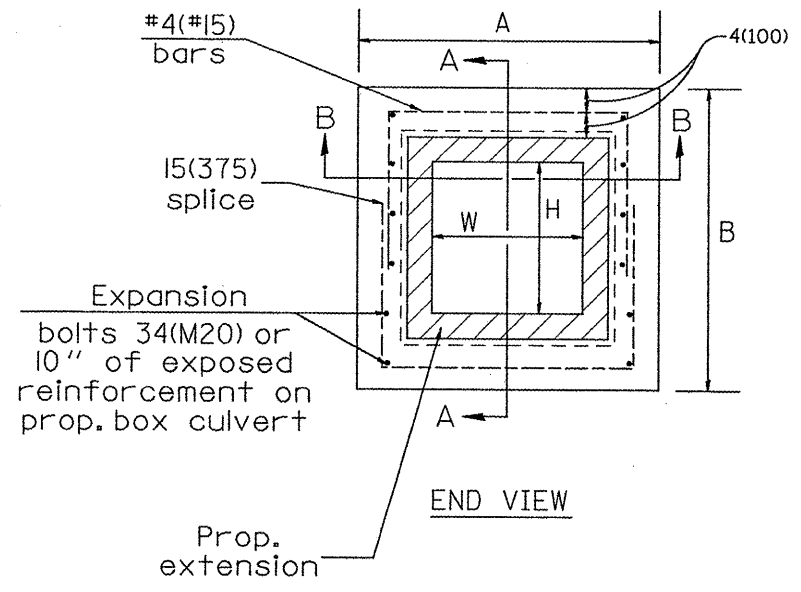
SECTION VIEW

NOTES:

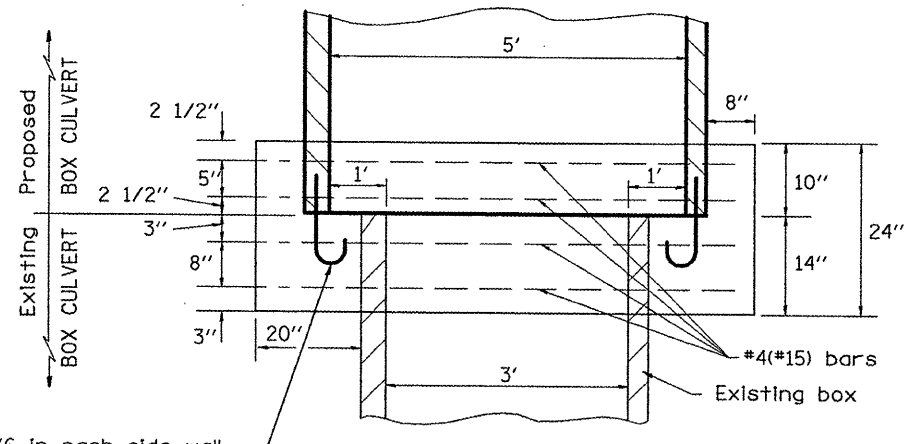
MANHOLE SHALL BE CONSTRUCTED ACCORDING TO SECTION 602 OF THE STANDARD SPECIFICATIONS, HIGHWAY STANDARD 602416, AND AS DETAILED HERE.

THE COST OF THE CLASS SI CONCRETE DETAILED HERE SHALL BE CONSIDERED INCLUDED IN THE COST OF THE MANHOLE

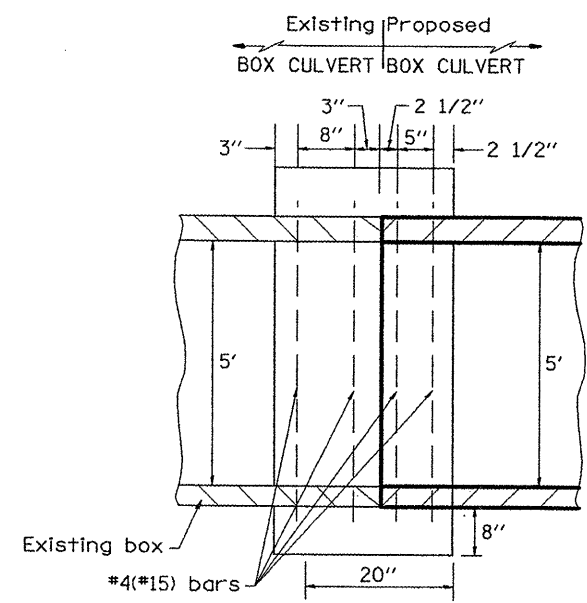
MANHOLE DETAIL



Expansion bolts (6 in each side wall of prop. box @ 12" spacing) or leave 10" of reinforcement extending from box walls to be cast into collar



SECTION B - B



SECTION A - A

GENERAL NOTES

- The collar shall be constructed entirely of CLASS SI CONCRETE and in accordance with the applicable portions of section 503 of the Standard Specifications. REINFORCEMENT BARS shall conform to section 508.
- Expansion bolts shall consist of approved expansion anchors, and 3/4(M20) hook bolts which conform to Section 1006.09. These bolts shall extend at least 8(200) into the new concrete.

EACH COLLAR											
EXIST. BOX		PROP. BOX		CLASS SI CONCRETE				REBARS			EXPANSION BOLTS EACH
W	H	W	H	CU. YD. (m ³)	A	B	T	X	Y	LBS. (kg)	
3'	5'	5'	5'	2.2	7'-4"	7'-4"	8"	6'-8"	3'-10"	38	12

#4 BAR WEIGHT = 0.668 LB/FT
REVISED
 5-28-2010

FILE NAME = IL116CULCSAUG/.dgn
 0468784-sht-plan.dgn

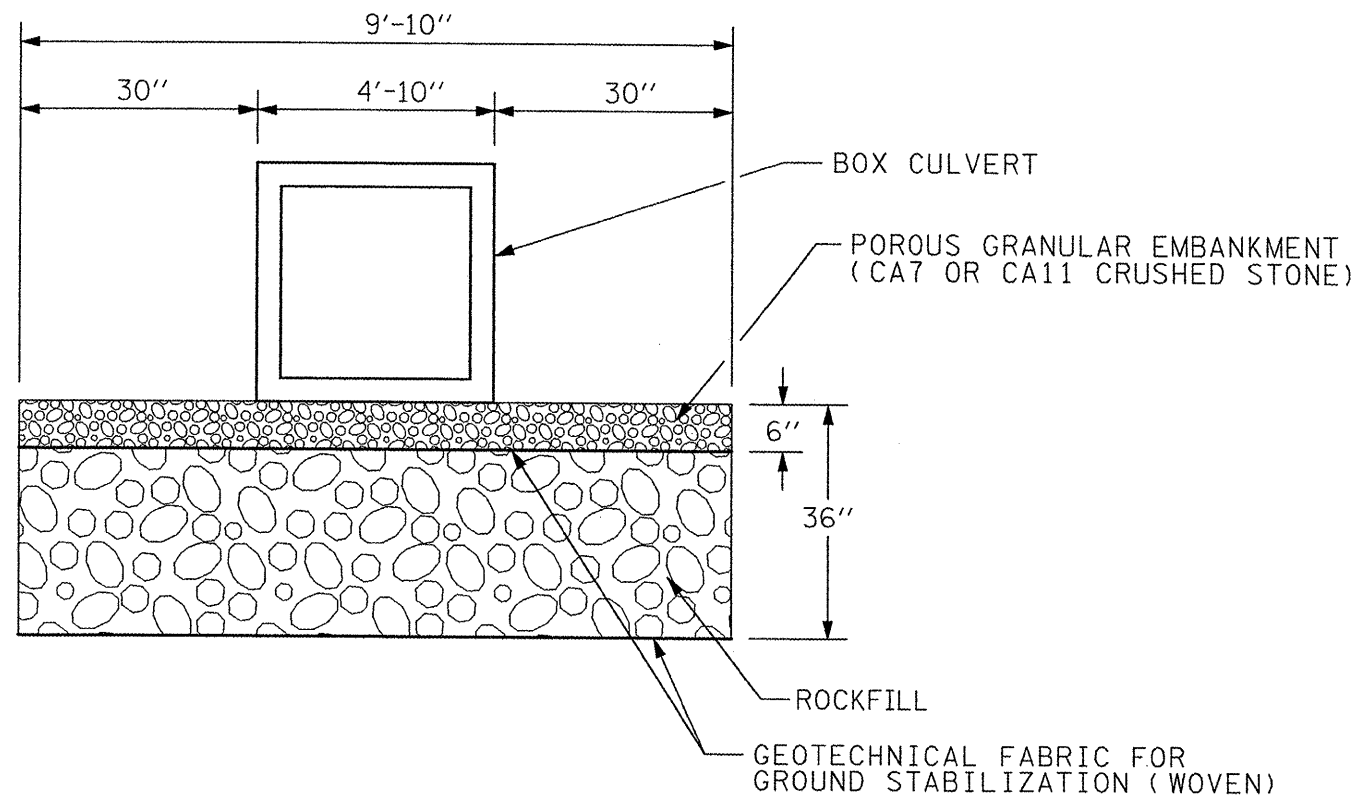
USER NAME = horathj
 DESIGNED -
 DRAWN -
 CHECKED -
 DATE -
 REVISED -
 REVISED -
 REVISED -
 REVISED -

STATE OF ILLINOIS
 DEPARTMENT OF TRANSPORTATION

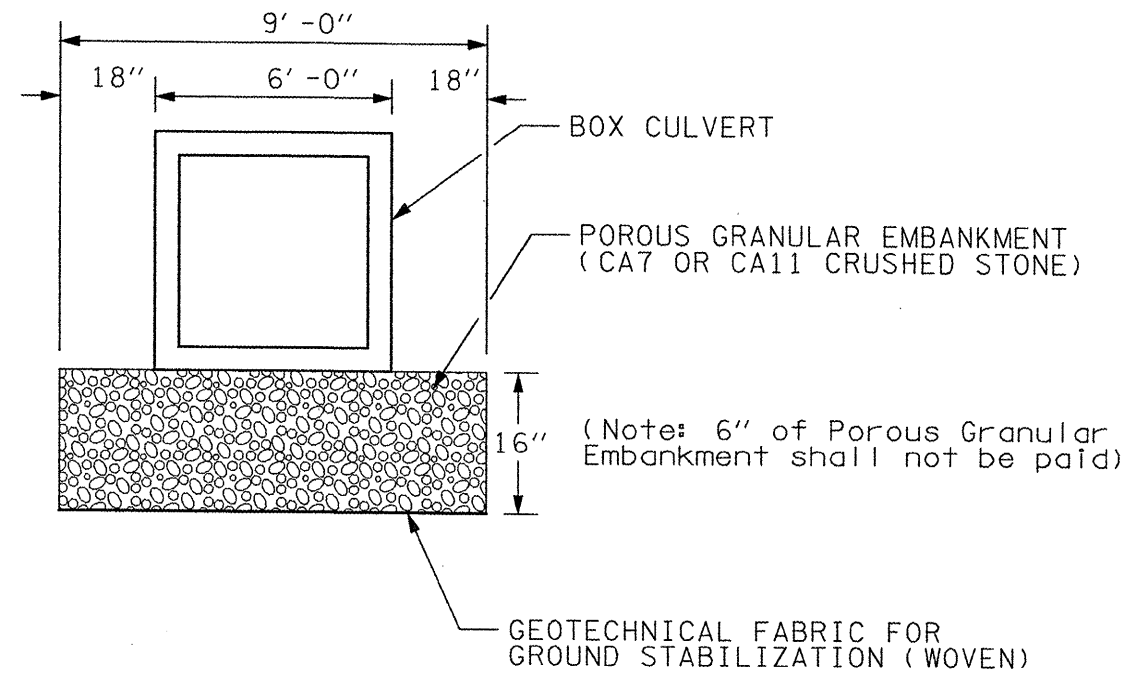
CONCRETE COLLAR DETAIL - LOCATION #2
 NOT TO SCALE
 SCALE: SHEET NO. OF SHEETS STA. TO STA.

F.A.P. RTE.	SECTION	COUNTY	TOTAL SHEETS	SHEET NO.
665	(140)I-1	WARREN	33	11

CONTRACT NO. 68931
 ILLINOIS FED. AID PROJECT



LOCATION 1: 1080+50 RT.




LOCATION 2: 1094+30 RT

GENERAL NOTES:

Undercut depths based on soil borings.
Final undercut depths to be determined in the field and verified by the Engineer.

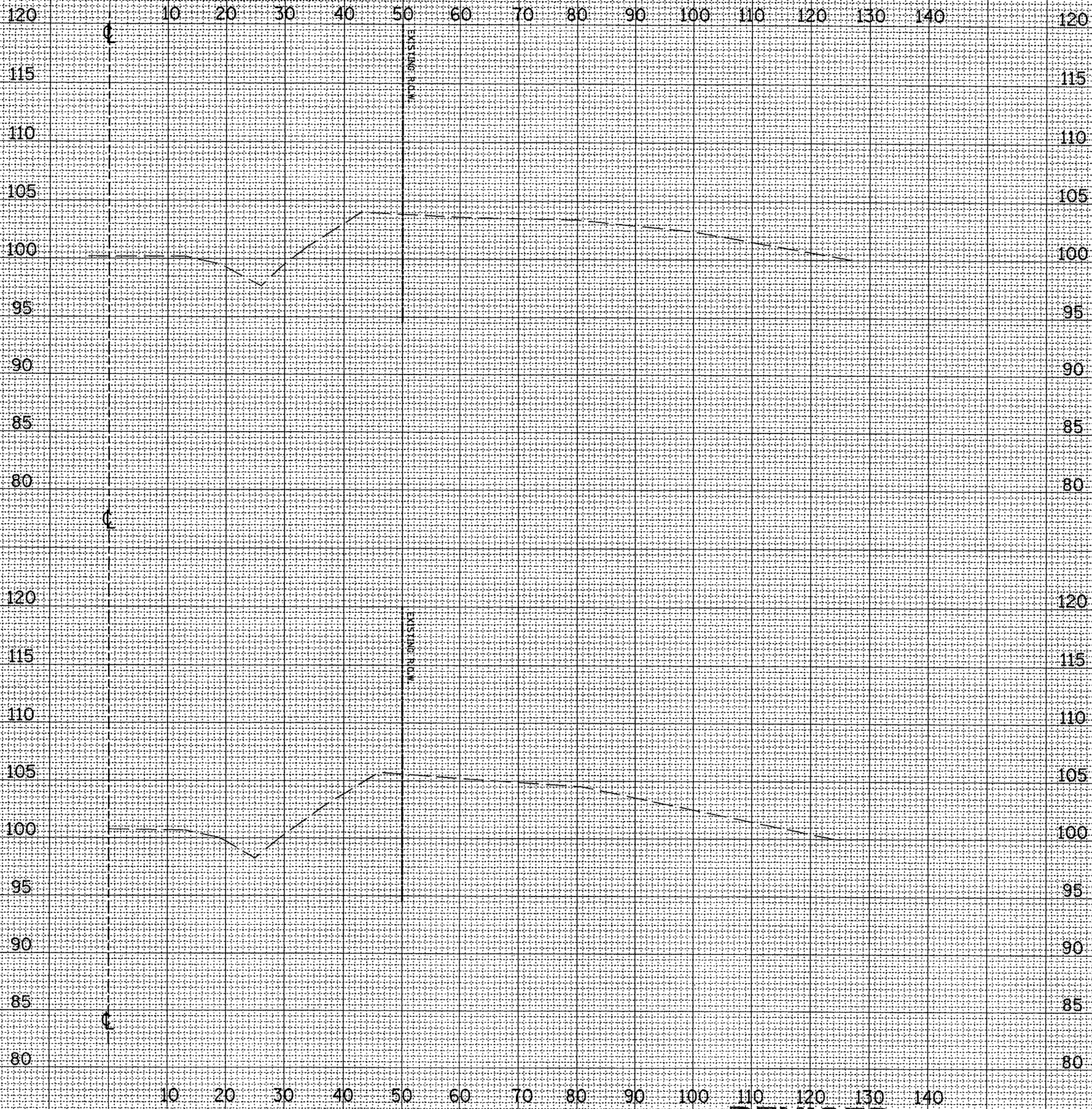
NOT TO SCALE



SHEET REVISED
5-28-2010

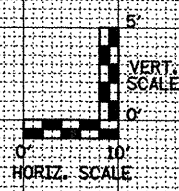
All dimensions are in inches (millimeters) unless otherwise noted.

FILE NAME = D468704-shr-plan.dgn	USER NAME = horstkj	DESIGNED -	REVISED -	STATE OF ILLINOIS DEPARTMENT OF TRANSPORTATION	UNSUITABLE EXCAVATION TREATMENT FOR CULVERTS	F.A.J. RTE. =	SECTION	COUNTY	TOTAL SHEETS	SHEET NO.
PLOT SCALE = 2.00" = 1' IN.	CHECKED -	REVISED -	639			(125)I-1	Mercer	33	12	
PLOT DATE = 5/27/2010	DATE -	REVISED -	CONTRACT NO. 68929							
						FED. ROAD DIST. NO.	ILLINOIS FED. AID PROJECT			
						SCALE:	SHEET NO.	OF SHEETS	STA.	TO STA.



STA. 1078+25
IMPROVEMENT BEGINS
LOCATION #1

STA. 1078+00



REVISED
5-28-2010

SURVEYED _____
 SURVEY _____
 NOTE BOOK _____
 NO. _____
 TEMPLATES _____
 AREAS CHECKED _____

SURVEYED _____
 SURVEY _____
 NOTE BOOK _____
 NO. _____
 TEMPLATES _____
 AREAS CHECKED _____

FILE NAME =
0468704-sht-plan.dgn

USER NAME = K. KILMAN
 PLOT SCALE = 20.0000" / IN.
 PLOT DATE = 5/26/2010

DESIGNED -	REVISED -
DRAWN - KKK	REVISED -
CHECKED -	REVISED -
DATE -	REVISED -

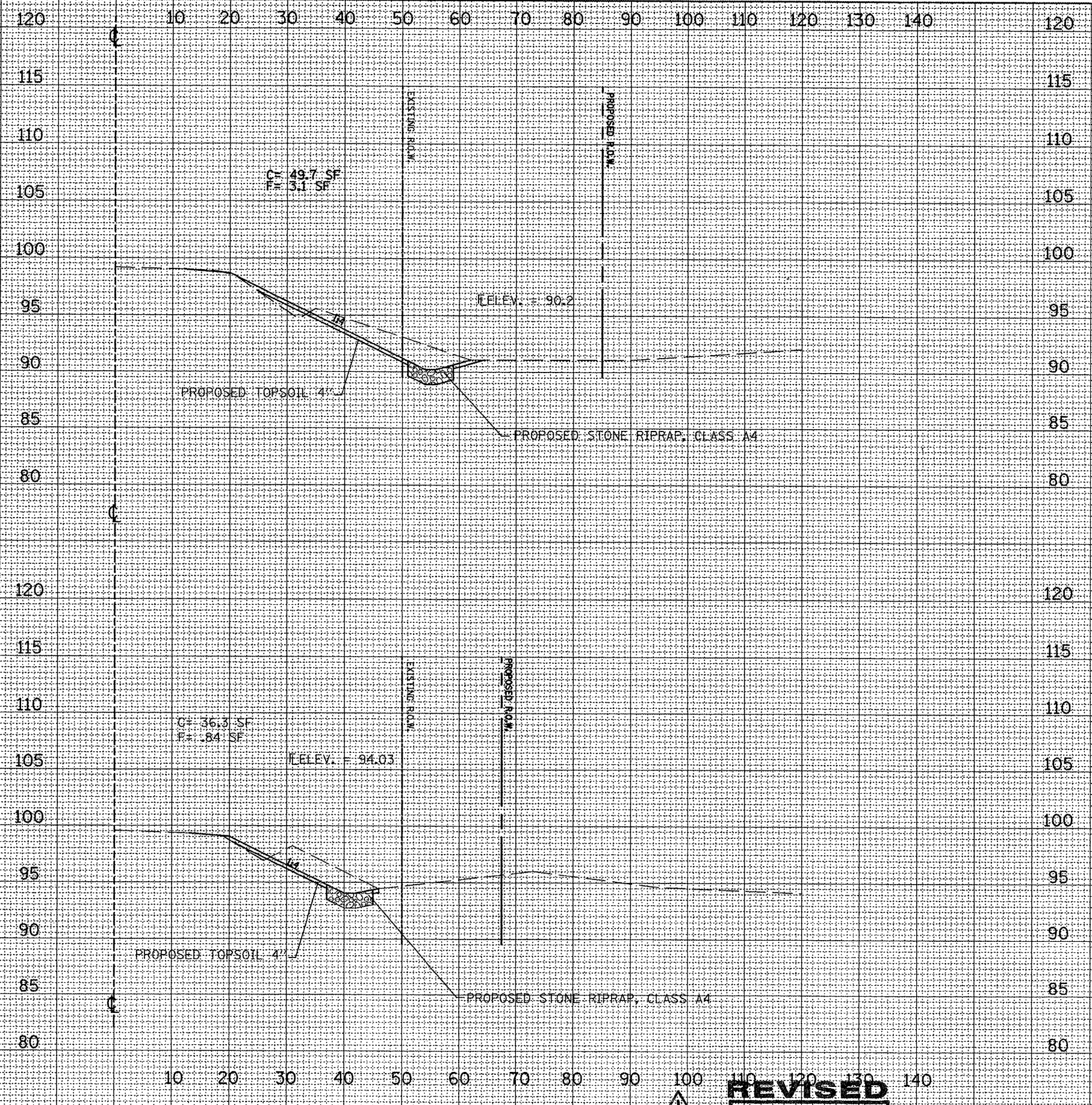
STATE OF ILLINOIS
DEPARTMENT OF TRANSPORTATION

CROSS SECTIONS
IL 17 - LOCATION 1
 SCALE: 1"=10'H/5'V SHEET NO. 3 OF 13 SHEETS STA. 1078+00 TO STA. 1078+19

F.A.P. RTE. 639	SECTION (125)I-1	COUNTY MERCER	TOTAL SHEETS 33	SHEET NO. 14
CONTRACT NO. 68929				
FED. ROAD DIST. NO. [ILLINOIS] FED. AID PROJECT				

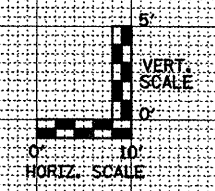
REVISIONS
 SURVEY PLOTTED
 NOTE BOOK
 AREAS CHECKED

REVISIONS
 SURVEY PLOTTED
 NOTE BOOK
 AREAS CHECKED



STA. 1078+75

STA. 1078+50



REVISED
 5-28-2010

FILE NAME =
 0468704-shr-plan.dgn

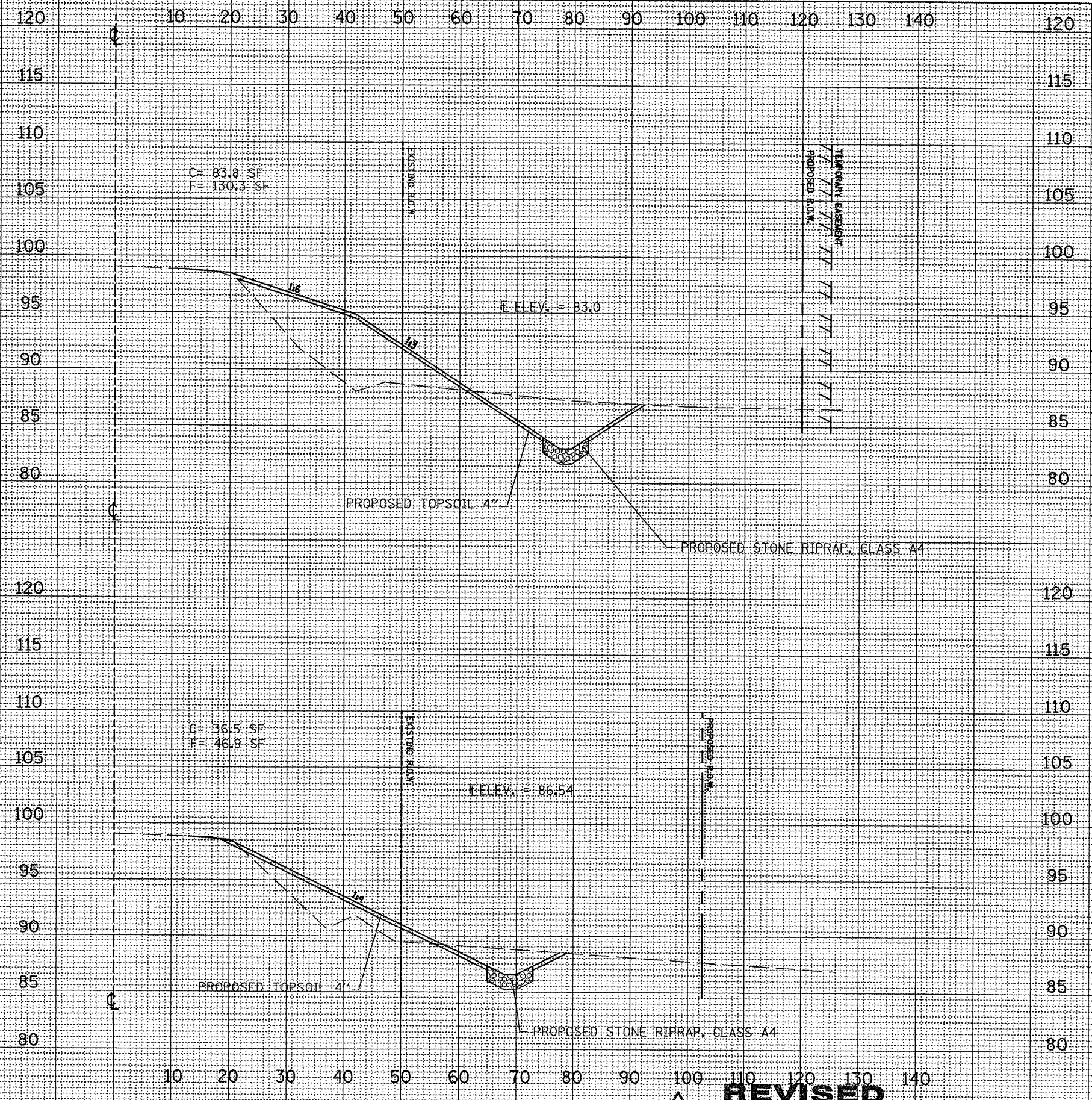
USER NAME = K. KILMAN	DESIGNED -	REVISED -
	DRAWN - KKK	REVISED -
PLOT SCALE = 28.0000' / IN.	CHECKED -	REVISED -
PLOT DATE = 5/26/2010	DATE -	REVISED -

STATE OF ILLINOIS
 DEPARTMENT OF TRANSPORTATION

SCALE: 1"=10'H/5'V
 SHEET NO. 4 OF 13 SHEETS
 STA. 1078+50 TO STA. 1078+75

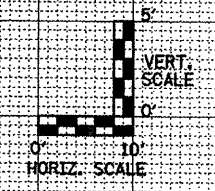
CROSS SECTIONS
 IL 17 - LOCATION 1

F.A.P. RTE. 639	SECTION (125)I-1	COUNTY MERCER	TOTAL SHEETS 33	SHEET NO. 15
FED. ROAD DIST. NO. ILLINOIS FED. AID PROJECT			CONTRACT NO. 68929	



STA. 1079+25

STA. 1079+00



REVISED
5-28-2010

REVISIONS	NO.	DATE	DESCRIPTION

SUBMITTED	DATE	BY

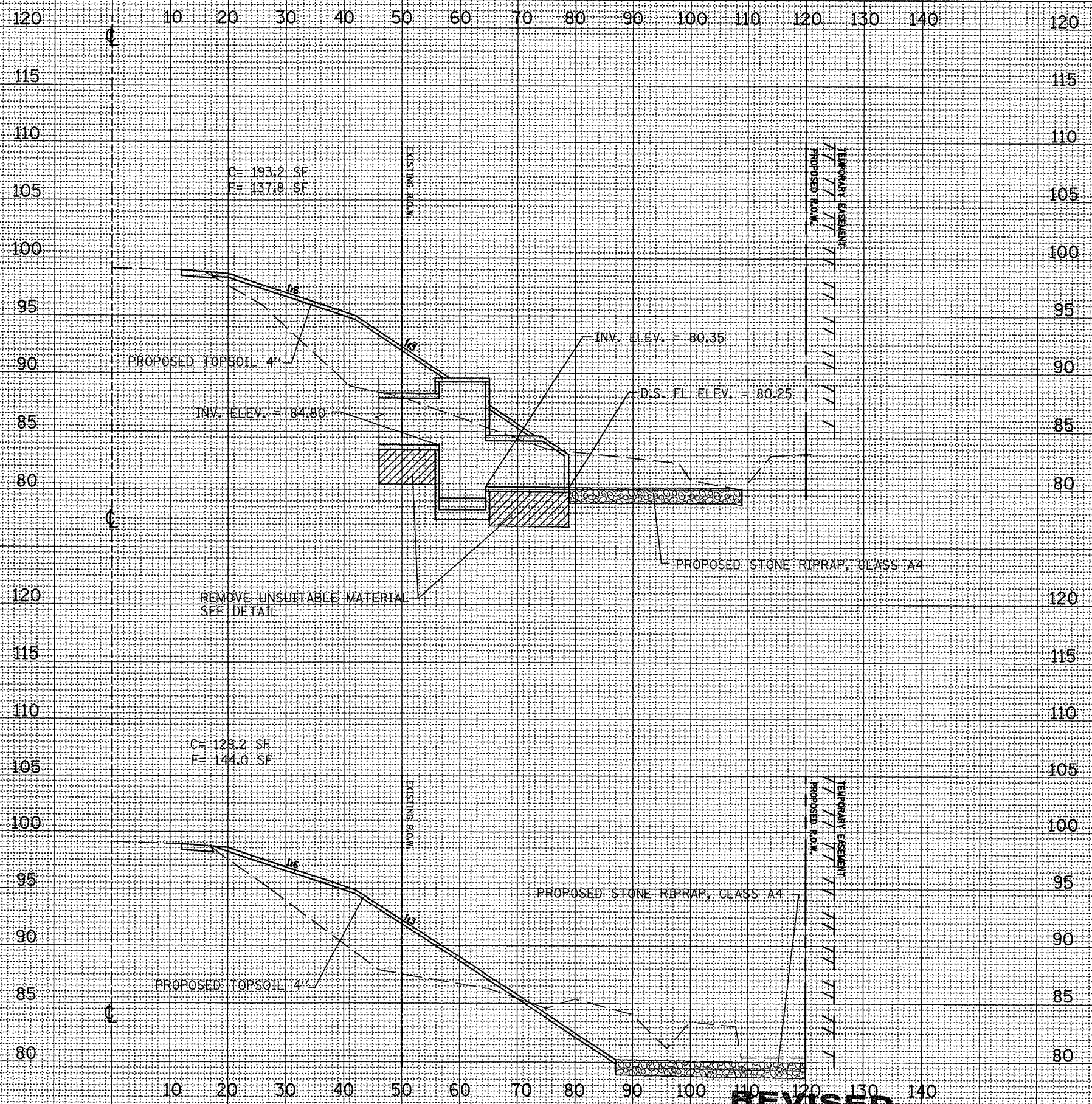
FILE NAME =
0468784-sht-pln.dgn

USER NAME = K.KILMAN	DESIGNED -	REVISED -
PLOT SCALE = 20,0000' / IN.	DRAWN - KKK	REVISED -
PLOT DATE = 5/26/2010	CHECKED -	REVISED -
	DATE -	REVISED -

STATE OF ILLINOIS
DEPARTMENT OF TRANSPORTATION

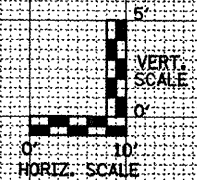
CROSS SECTIONS
IL 17 - LOCATION 1
SCALE: 1"=10'H/5'V SHEET NO. 5 OF 13 SHEETS STA. 1079+00 TO STA. 1079+25

F.A.P. RTE. 639	SECTION (125)I-1	COUNTY MERCER	TOTAL SHEETS 33	SHEET NO. 16
FED. ROAD DIST. NO. ILLINOIS FED. AID PROJECT			CONTRACT NO. 68929	



STA. 1079+75

STA. 1079+50



REVISED
S-28-2010

STATE OF ILLINOIS
DEPARTMENT OF TRANSPORTATION

CROSS SECTIONS
IL 17 - LOCATION 1

SCALE: 1"=10'H/5'V SHEET NO. 6 OF 13 SHEETS STA. 1079+50 TO STA. 1079+75

F.A.P. RTE. 639	SECTION (125)I-1	COUNTY MERCER	TOTAL SHEETS 33	SHEET NO. 17
FED. ROAD DIST. NO. ILLINOIS FED. AID PROJECT			CONTRACT NO. 68929	

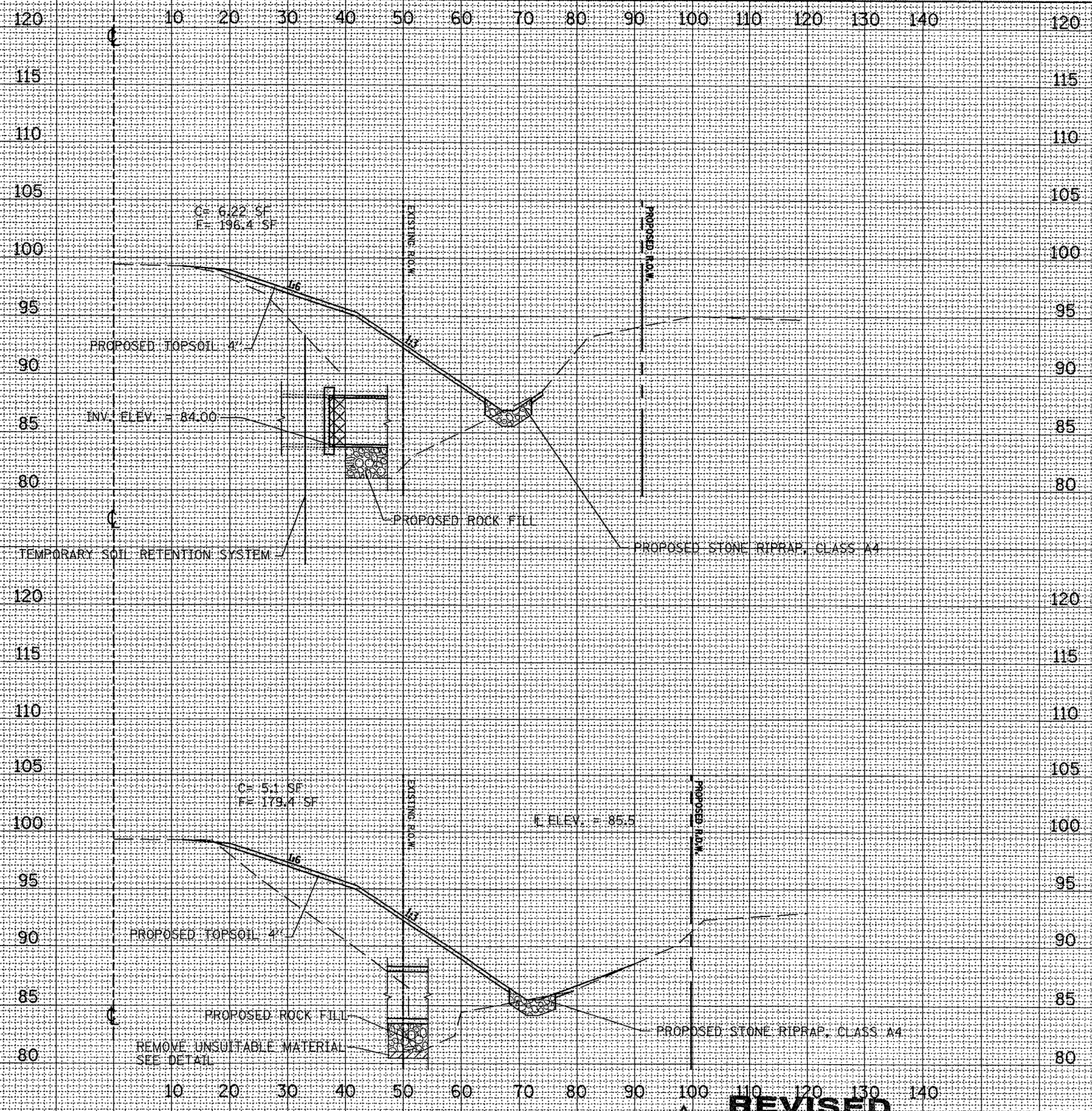
SURVEYED
PLOTTED
NOTE BOOK
AREAS CHECKED

SURVEYED
PLOTTED
NOTE BOOK
AREAS CHECKED

FILE NAME =
0468704-sht-plan.dgn

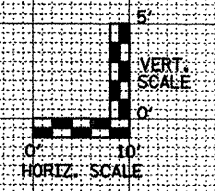
USER NAME = K.KILMAN
DESIGNED -
DRAWN - KKK
PLOT SCALE = 28.0000' / IN.
PLOT DATE = 5/26/2010

DESIGNED -
DRAWN - KKK
CHECKED -
DATE -
REVISED -
REVISED -
REVISED -
REVISED -



STA. 1080+16

STA. 1080+04



REVISED
5-28-2010

SURVEYED _____
PLOTTED _____
NOTE BOOK _____
AREAS CHECKED _____
NO.

SURVEYED _____
PLOTTED _____
NOTE BOOK _____
AREAS CHECKED _____
NO.

FILE NAME =
D468704-sht-plan.dgn

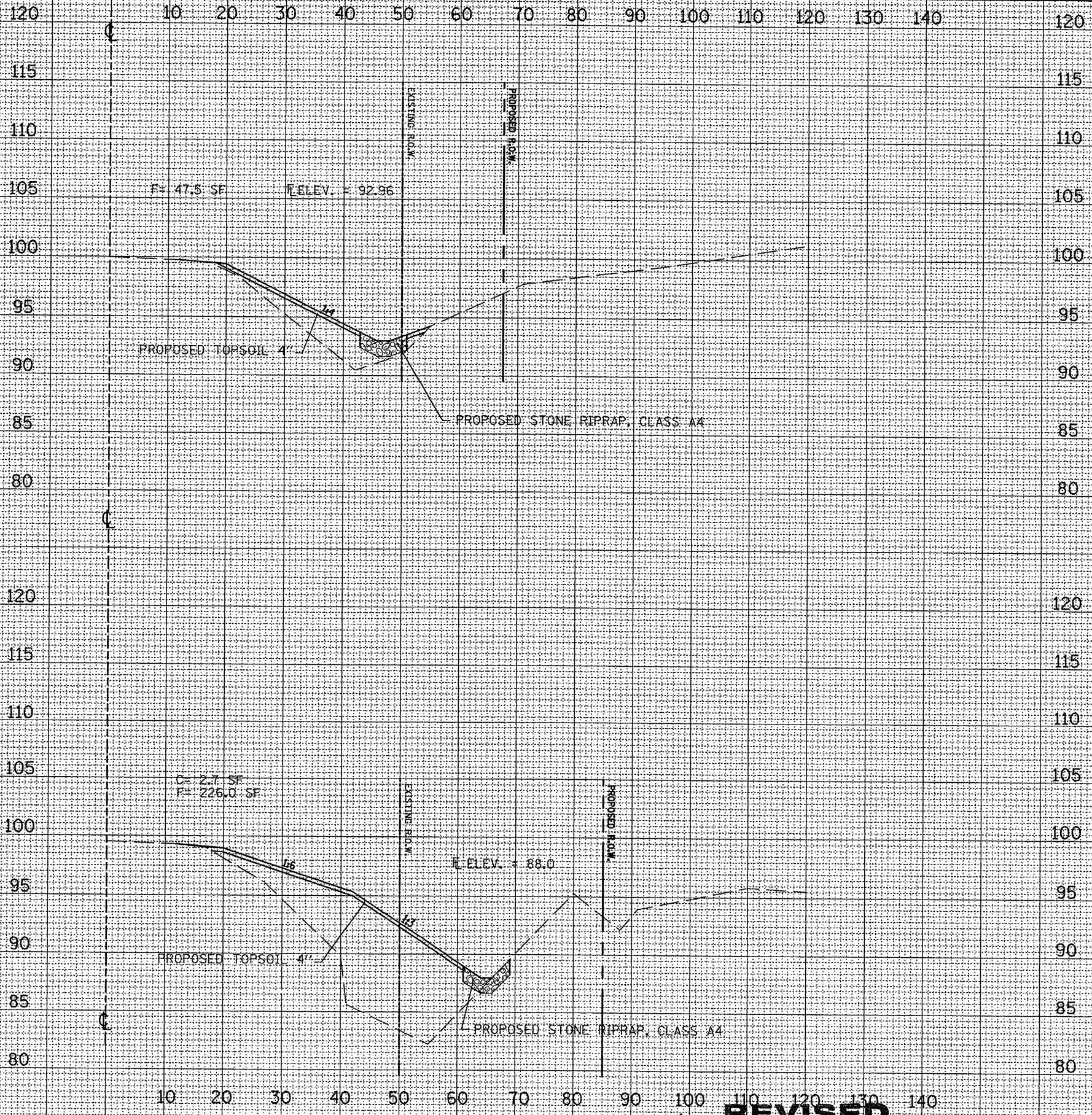
USER NAME = K. KILMAN	DESIGNED -	REVISED -
	DRAWN - KKK	REVISED -
PLOT SCALE = 28,8000' / IN.	CHECKED -	REVISED -
PLOT DATE = 5/26/2010	DATE -	REVISED -

STATE OF ILLINOIS
DEPARTMENT OF TRANSPORTATION

CROSS SECTIONS
IL 17

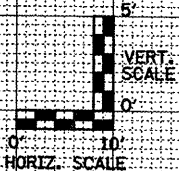
SCALE: 1"=10'H/5'V SHEET NO. 7 OF 13 SHEETS STA. 1080+04 TO STA. 1080+16

F.A.P. RTE. 639	SECTION (125)I-1	COUNTY MERCER	TOTAL SHEETS 33	SHEET NO. 18
CONTRACT NO. 68929				
FED. ROAD DIST. NO. ILLINOIS FED. AID PROJECT				



STA. 1080+50

STA. 1080+25



REVISED
5-28-2010

SURVEYED	PLANNED
SURVEY	PLANNED
NOTE BOOK	PLANNED
AREAS CHECKED	PLANNED
NO.	PLANNED

SURVEYED	PLANNED
SURVEY	PLANNED
NOTE BOOK	PLANNED
AREAS CHECKED	PLANNED
NO.	PLANNED

FILE NAME = D468704-sht-plan.dgn
 USER NAME = K. KILMAN
 PLOT SCALE = 20.0000 "/p>

DESIGNED -	REVISOR -
DRAWN - KKK	REVISIONS -
CHECKED -	REVISIONS -
DATE -	REVISIONS -

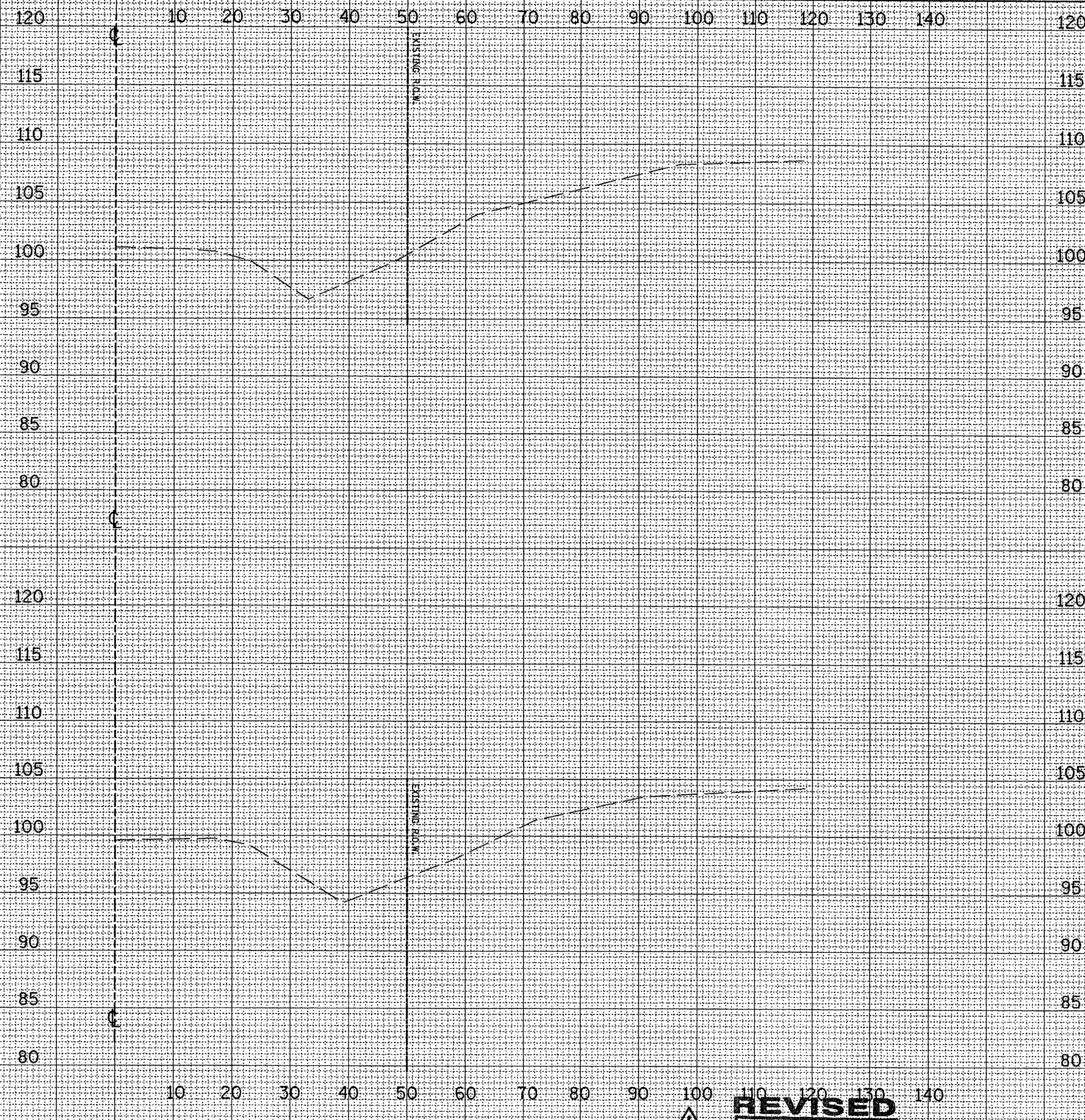
STATE OF ILLINOIS
 DEPARTMENT OF TRANSPORTATION

CROSS SECTIONS
 IL 17 - LOCATION 1
 SCALE: 1"=10'H/5'V SHEET NO. 8 OF 13 SHEETS STA. 1080+25 TO STA. 1080+50

F.A.P. RTE 639	SECTION (125)I-1	COUNTY MERCER	TOTAL SHEETS 33	SHEET NO. 19
CONTRACT NO. 68929				
FED. ROAD DIST. NO. [ILLINOIS] FED. AID PROJECT				

SURVEY NO. _____
 NOTE BOOK NO. _____
 PLOTTED _____
 TEMPLATE AREAS CHECKED _____

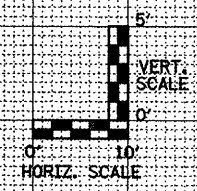
SURVEY NO. _____
 NOTE BOOK NO. _____
 PLOTTED _____
 TEMPLATE AREAS CHECKED _____



STA. 1081+00

IMPROVEMENT ENDS
LOCATION #1

STA. 1080+75



REVISED
 5-28-2010

FILE NAME = 0468704-sht-pln.dgn	USER NAME = K.KILMAN	DESIGNED -	REVISED -
		DRAWN - KKK	REVISED -
		PLOT SCALE = 20.0000' / IN.	REVISED -
		CHECKED -	REVISED -
		DATE -	REVISED -

STATE OF ILLINOIS
DEPARTMENT OF TRANSPORTATION

SCALE: 1"=10'H/5'V SHEET NO. 9 OF 13 SHEETS STA. 1080+75 TO STA. 1081+00

CROSS SECTIONS
IL 17 - LOCATION 1

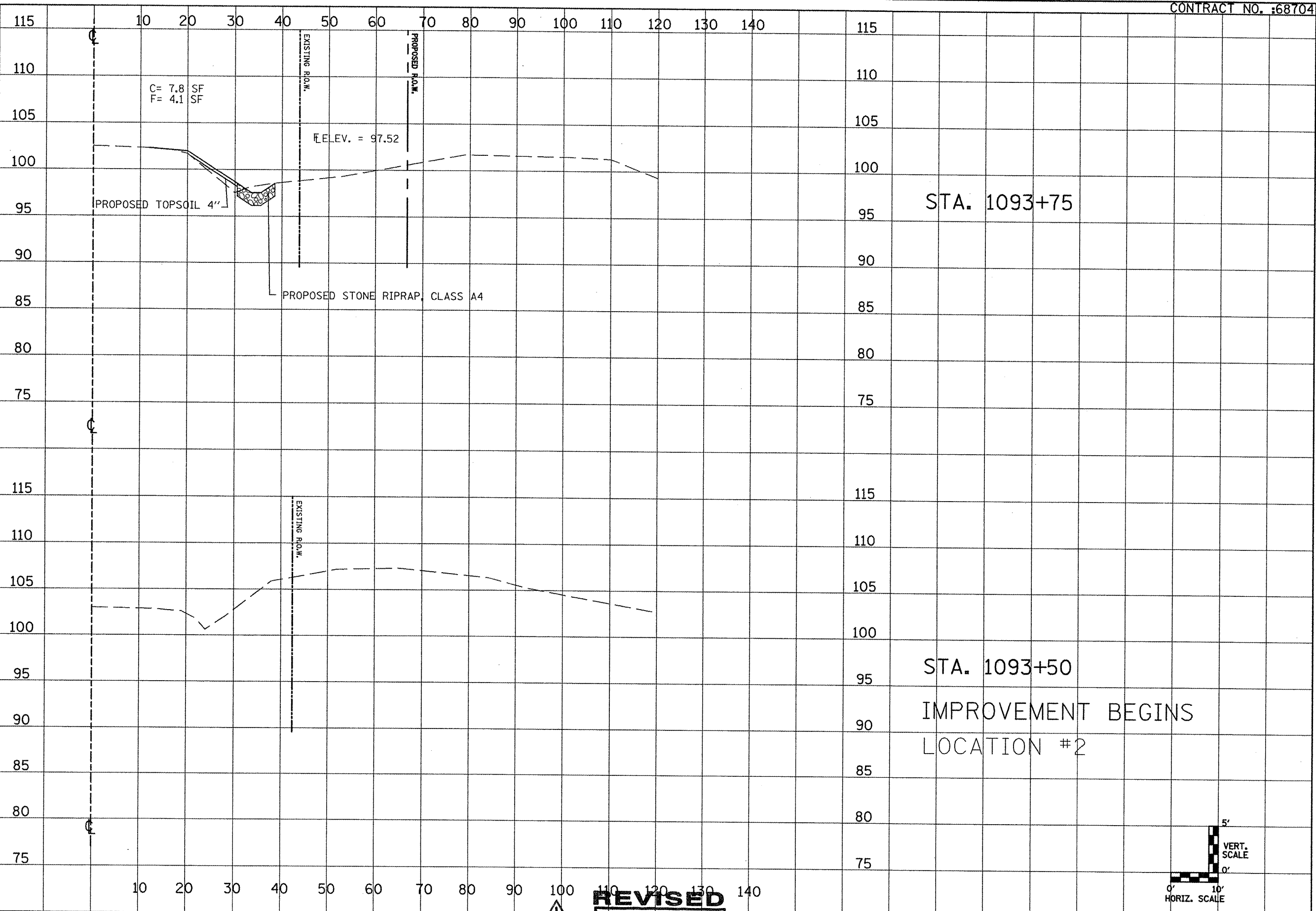
F.A.P. RTE. 639	SECTION (125)I-1	COUNTY MERCER	TOTAL SHEETS 33	SHEET NO. 20
CONTRACT NO. 68929				
FED. ROAD DIST. NO. ILLINOIS FED. AID PROJECT				

THIS SHEET WAS INTENTIONALLY LEFT BLANK.

**SHEET
REVISED
5-28-2010**



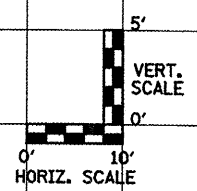
FILE NAME = 0468784-sht-plan.dgn	USER NAME = K. KILMAN	DESIGNED -	REVISED -	STATE OF ILLINOIS DEPARTMENT OF TRANSPORTATION	CROSS SECTIONS IL 17 - LOCATION 1	F.A.P. RTE.	SECTION	COUNTY	TOTAL SHEETS	SHEET NO.
	PLOT SCALE = 20,0000' / IN.	DRAWN - KKK	REVISED -			639	(125)-1	MERCER	33	21
	PLOT DATE = 5/26/2010	CHECKED -	REVISED -			CONTRACT NO. 68929				
	DATE -	REVISED -		SCALE: 1"=10'H/5'V	SHEET NO. 10 OF 13 SHEETS	STA. 1081+25 TO STA. 1081+50	FED. ROAD DIST. NO.	ILLINOIS FED. AID PROJECT		



STA. 1093+75

STA. 1093+50

IMPROVEMENT BEGINS
LOCATION #2



REVISED
5-28-2010

SURVEY NO. _____
 NOTE BOOK NO. _____
 PLOTTED _____
 TEMPLATE _____
 AREAS CHECKED _____

SURVEY NO. _____
 NOTE BOOK NO. _____
 PLOTTED _____
 TEMPLATE _____
 AREAS CHECKED _____

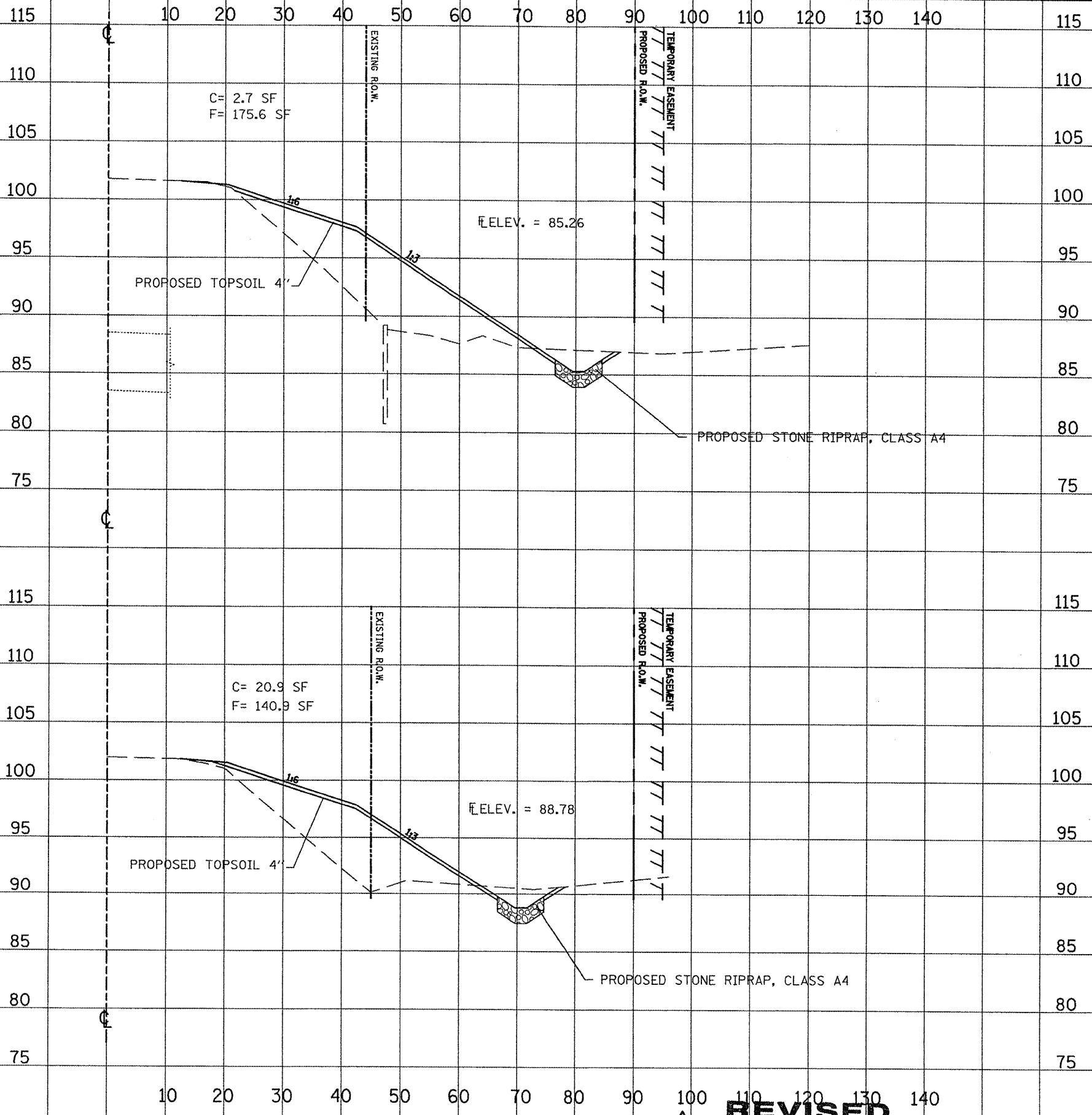
FILE NAME = 0468704-aht-plen.dgn	USER NAME = K. KILMAN	DESIGNED -	REVISED -
		DRAWN - KKK	REVISED -
		CHECKED -	REVISED -
		DATE -	REVISED -

STATE OF ILLINOIS
DEPARTMENT OF TRANSPORTATION

CROSS SECTIONS
IL 17 - LOCATION 2

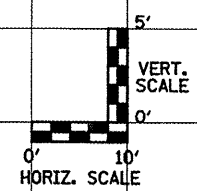
SCALE: 1"=10'H/5'V SHEET NO. OF SHEETS STA.

F.A.P. RTE. 639	SECTION (125)I-1	COUNTY MERCER	TOTAL SHEETS 33	SHEET NO. 22
FED. ROAD DIST. NO. ILLINOIS FED. AID PROJECT			CONTRACT NO. 68929	



STA. 1094+20

STA. 1094+00



REVISED
5-28-2010

SURVEY
PLOTTED
DATE
NO.

SURVEY
PLOTTED
DATE
NO.

FILE NAME = D468704-sht-plan.dgn
USER NAME = K. KILMAN

DESIGNED -	REVISOR -
DRAWN - KKK	REVISIONS -
CHECKED -	REVISIONS -
DATE - 5/27/2010	REVISIONS -

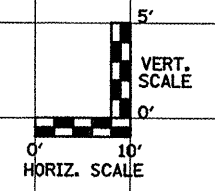
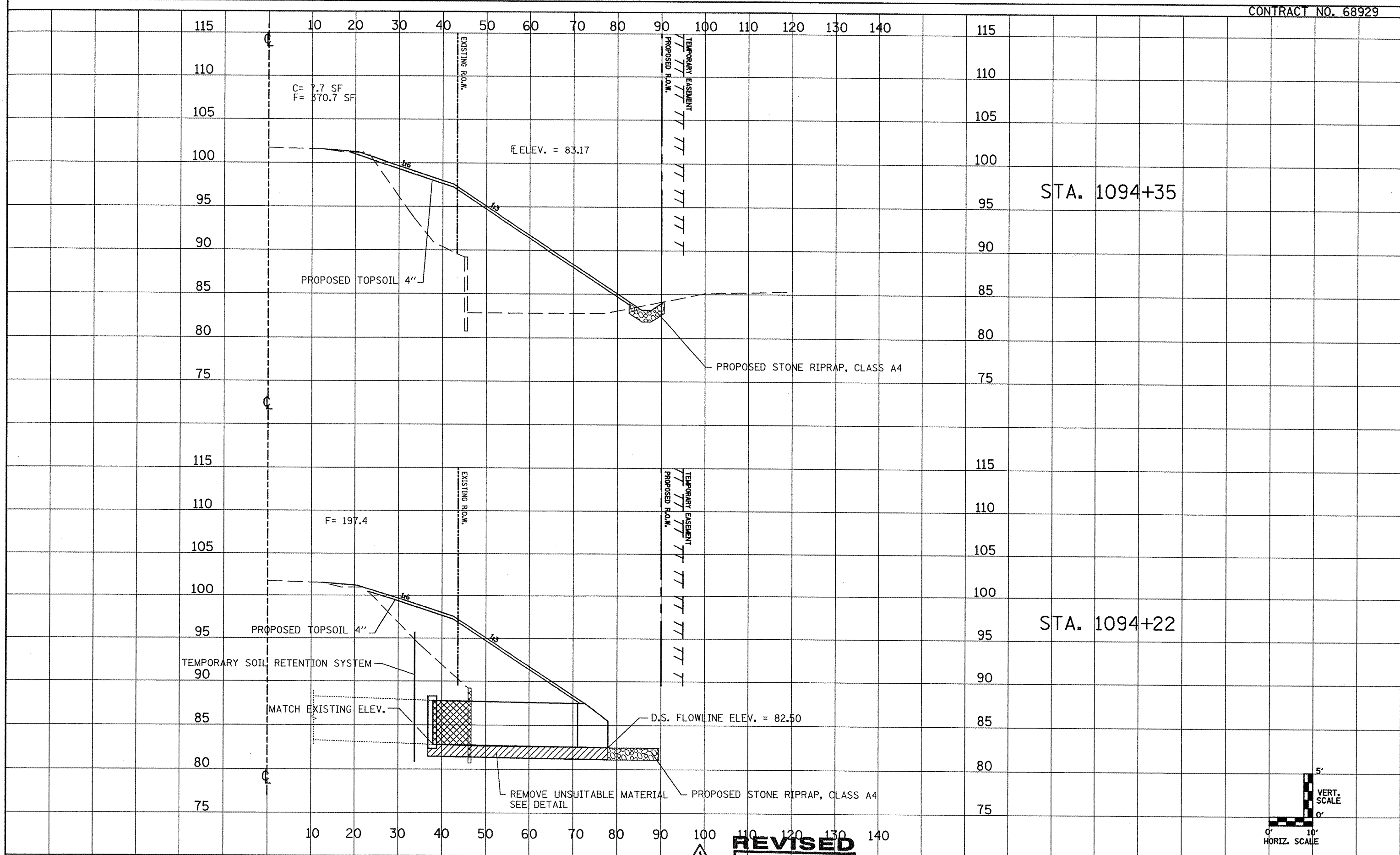
STATE OF ILLINOIS
DEPARTMENT OF TRANSPORTATION

CROSS SECTIONS
IL 17 - LOCATION 2
SCALE: 1"=10'H/5'V SHEET NO. OF SHEETS STA.

F.A.P. RTE. 639	SECTION (125)I-1	COUNTY MERCER	TOTAL SHEETS 33	SHEET NO. 23
CONTRACT NO. 68929				
FED. ROAD DIST. NO. ILLINOIS FED. AID PROJECT				

SURVEY NO. _____
 PLOTTED DATE _____
 TEMPLATE NO. _____
 AREAS CHECKED _____

SURVEY NO. _____
 PLOTTED DATE _____
 TEMPLATE NO. _____
 AREAS CHECKED _____



REVISED
5-28-2010

FILE NAME = D468784-sht-plan.dgn	USER NAME = K. KILMAN	DESIGNED -	REVISED -
		DRAWN - KKK	REVISED -
		CHECKED -	REVISED -
		DATE -	REVISED -

STATE OF ILLINOIS
DEPARTMENT OF TRANSPORTATION

CROSS SECTIONS
IL 17 - LOCATION 2

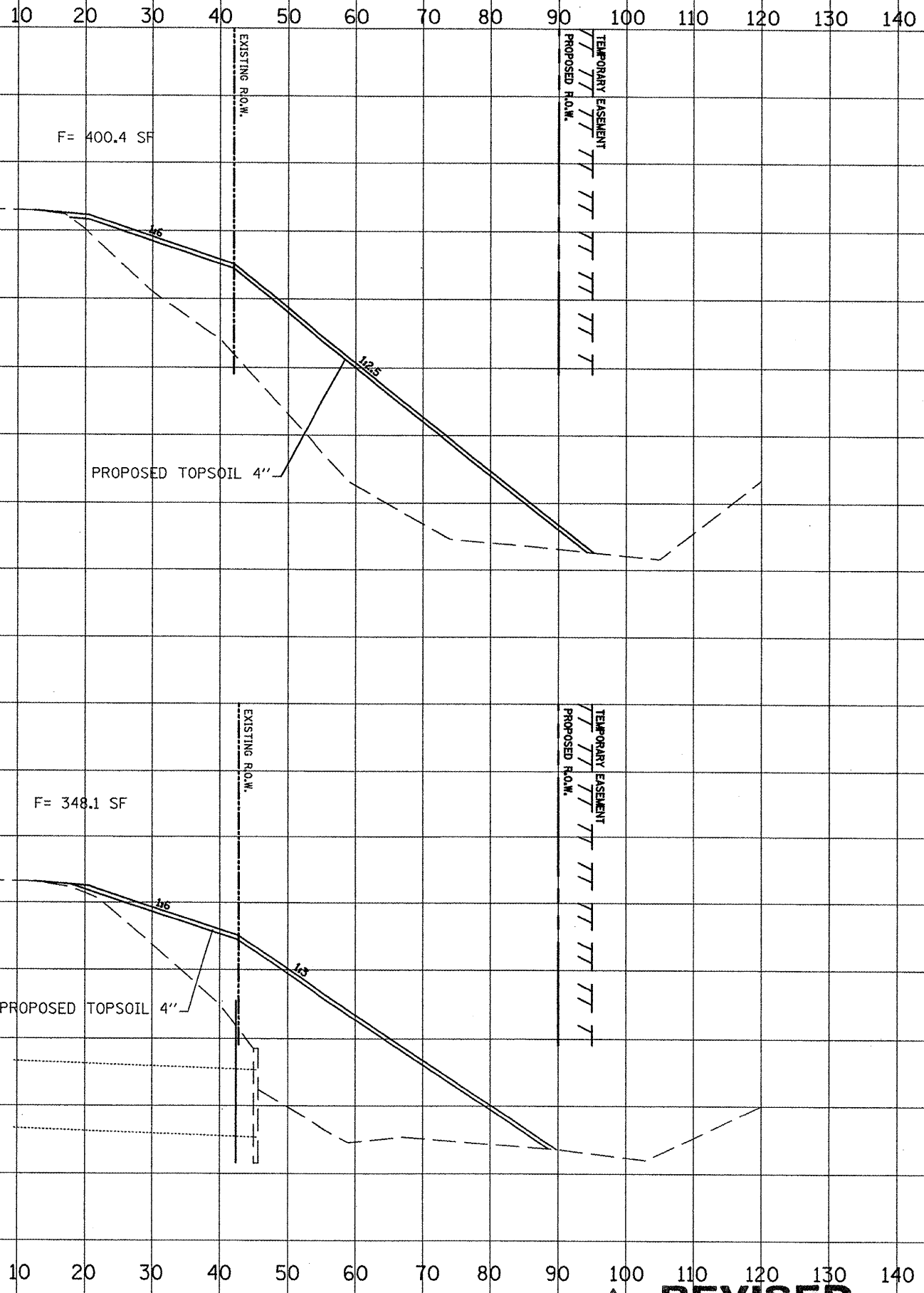
SCALE: 1"=10'H/5'V SHEET NO. OF SHEETS STA.

F.A.P. RTE. 639	SECTION (125)I-1	COUNTY MERCER	TOTAL SHEETS 33	SHEET NO. 24
CONTRACT NO. 68929				
FED. ROAD DIST. NO. ILLINOIS FED. AID PROJECT				

SURVEYED
PLOTTED
TEMP. AREAS CHECKED

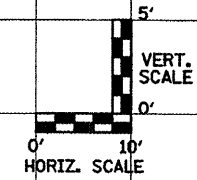
SURVEY
NOTE BOOK
NO.

115
110
105
100
95
90
85
80
75



STA. 1094+60

STA. 1094+45



REVISED
5-28-2010

STATE OF ILLINOIS
DEPARTMENT OF TRANSPORTATION

CROSS SECTIONS
IL 17 - LOCATION 2

FILE NAME =
D468704-sht-plan.dgn

USER NAME = K. KILMAN
DESIGNED -
DRAWN - KKK
CHECKED -
PLOT SCALE = 28.0000" / IN.
PLOT DATE = 5/27/2010

REVISOR -
REVISIONS -
REVISIONS -
REVISIONS -
REVISIONS -

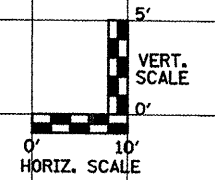
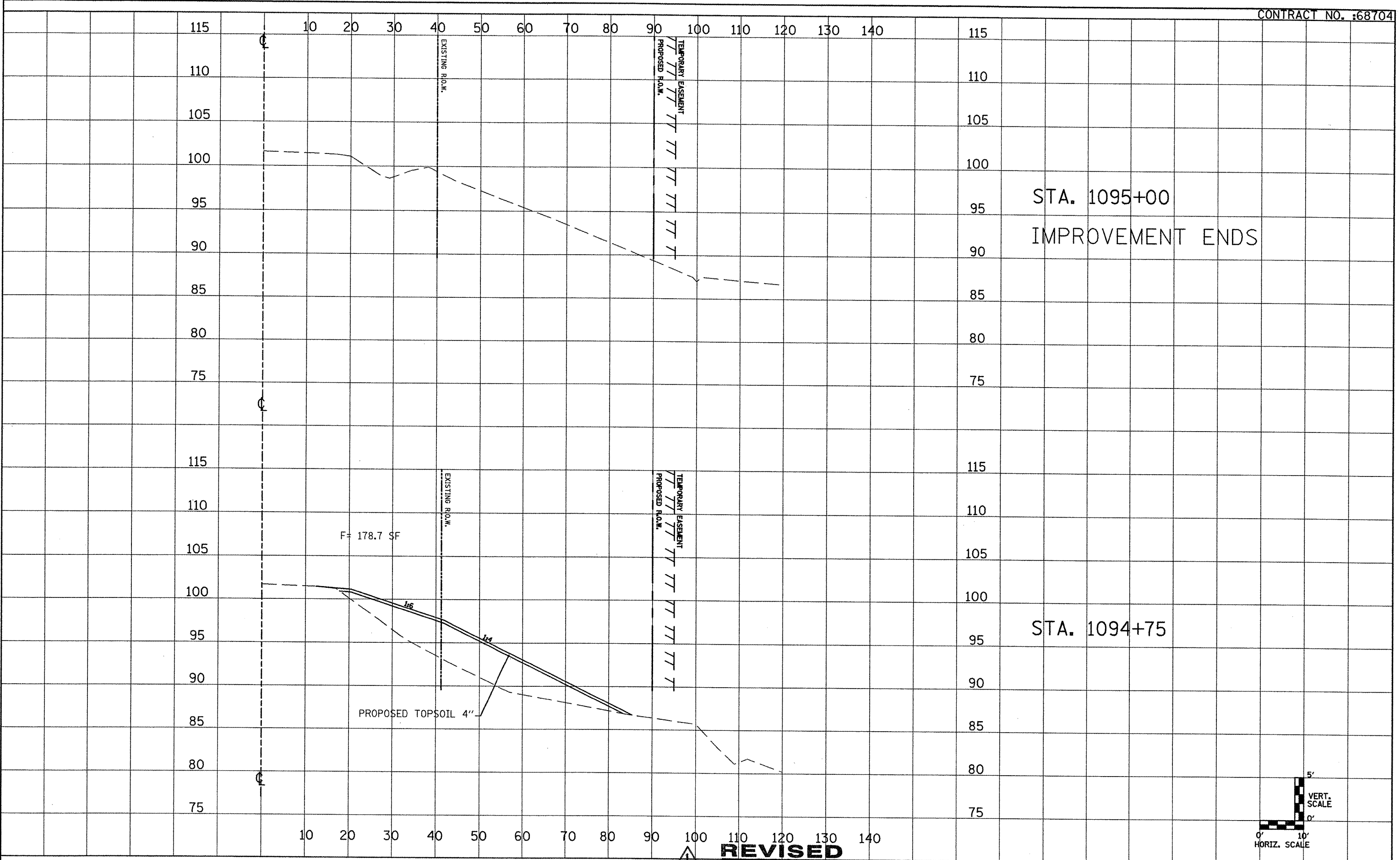
DATE -

SCALE: 1"=10'H/5'V SHEET NO. OF SHEETS STA.

F.A.P. RTE. 639	SECTION (125)I-1	COUNTY MERCER	TOTAL SHEETS 33	SHEET NO. 25
CONTRACT NO. 68929				
FED. ROAD DIST. NO. ILLINOIS FED. AID PROJECT				

SURVEYED _____
 PLOTTED _____
 NOTE BOOK _____
 NO. _____

SURVEYED _____
 PLOTTED _____
 NOTE BOOK _____
 NO. _____



REVISED
 5-28-2010

FILE NAME =
 0468704-shr-plan.dgn

USER NAME = K. KILMAN	DESIGNED -	REVISED -
PLOT SCALE = 20.0000' / IN.	DRAWN - KKK	REVISED -
PLOT DATE = 5/27/2010	CHECKED -	REVISED -
	DATE -	REVISED -

STATE OF ILLINOIS
DEPARTMENT OF TRANSPORTATION

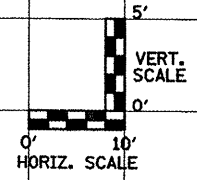
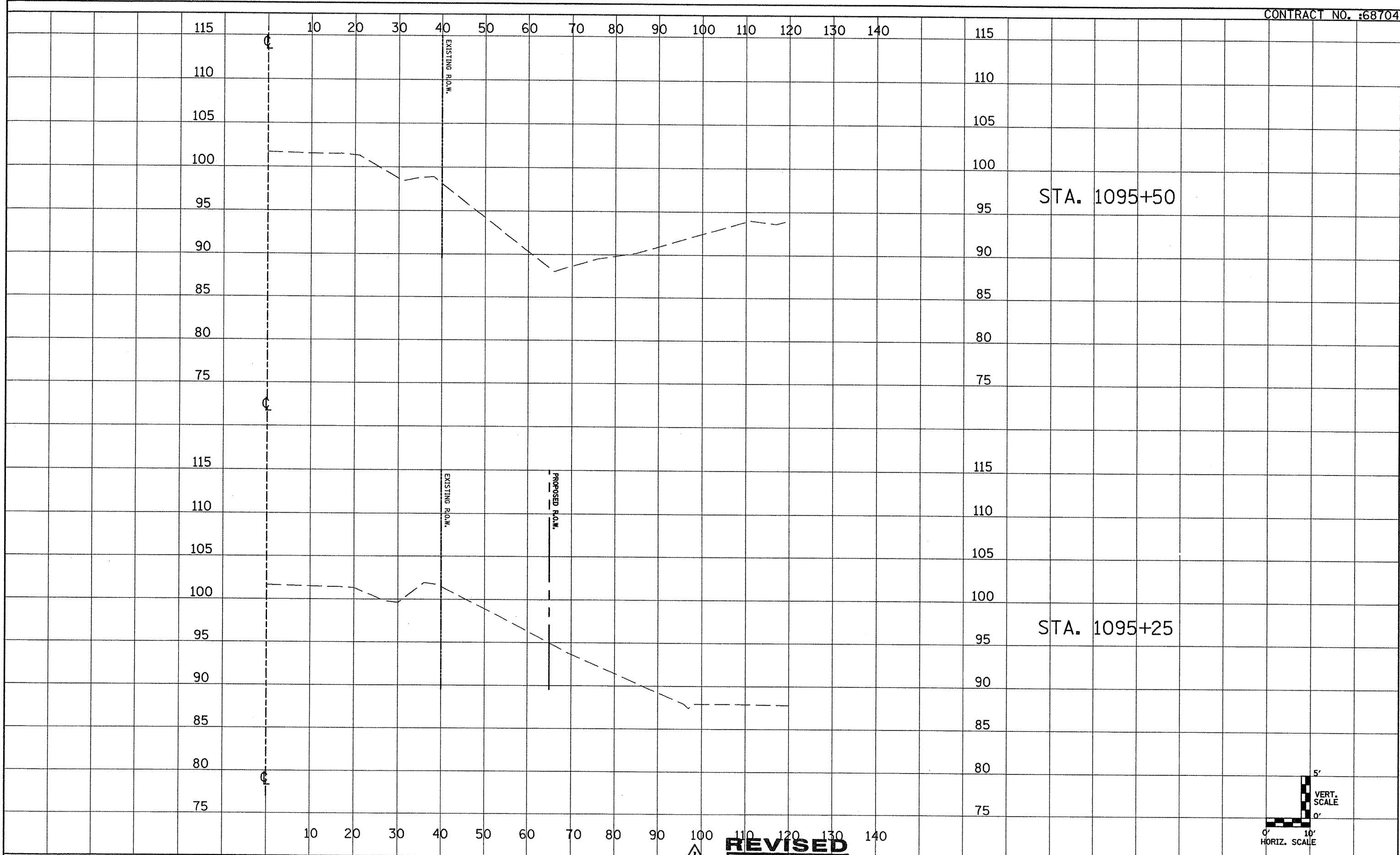
CROSS SECTIONS
IL 17 - LOCATION 2

SCALE: 1"=10'H/5'V SHEET NO. OF SHEETS STA.

F.A.P. RTE. 639	SECTION (125)I-1	COUNTY MERCER	TOTAL SHEETS 33	SHEET NO. 26
FED. ROAD DIST. NO. ILLINOIS FED. AID PROJECT			CONTRACT NO. 68929	

SURVEY
NOTE BOOK
NO. _____
DESIGNED
DRAWN
CHECKED
DATE
REVISIONS

SURVEY
NOTE BOOK
NO. _____
DESIGNED
DRAWN
CHECKED
DATE
REVISIONS



REVISED
5-28-2010

FILE NAME = D468704-sht-plan.dgn	USER NAME = K.KILMAN	DESIGNED -	REVISED -
		DRAWN - KKK	REVISED -
		CHECKED -	REVISED -
		DATE -	REVISED -

STATE OF ILLINOIS
DEPARTMENT OF TRANSPORTATION

CROSS SECTIONS
IL 17 - LOCATION 2

SCALE: 1"=10'H/5'V SHEET NO. OF SHEETS STA.


F.A.P. RTE. 639	SECTION (125)I-1	COUNTY MERCER	TOTAL SHEETS 33	SHEET NO. 27
FED. ROAD DIST. NO. ILLINOIS FED. AID PROJECT			CONTRACT NO. 68929	

THIS SHEET WAS INTENTIONALLY LEFT BLANK.

SURVEY	SURVEYED
NOTE BOOK	PLOTTED
NO.	DATE
	AREAS CHECKED

SURVEY	SURVEYED
NOTE BOOK	PLOTTED
NO.	DATE
	AREAS CHECKED

**SHEET
REVISED
5-28-2010**

FILE NAME = 0468704-ah-t-plan.dgn	USER NAME = K. KILMAN	DESIGNED -	REVISED -	 STATE OF ILLINOIS DEPARTMENT OF TRANSPORTATION	CROSS SECTIONS IL 17 - LOCATION 2	F.A.P. RTE. 639	SECTION (125)1-1	COUNTY MERCER	TOTAL SHEETS 33	SHEET NO. 28	
	PLT SCALE = 20.0000' / IN.	DRAWN - KKK	REVISED -			SCALE: 1"=10'H/5'V	SHEET NO. OF SHEETS	STA.	CONTRACT NO. 68929		
	PLOT DATE = 5/27/2010	CHECKED -	REVISED -			FED. ROAD DIST. NO.			ILLINOIS FED. AID PROJECT		
		DATE -	REVISED -								

THIS SHEET WAS INTENTIONALLY LEFT BLANK.

SHEET
REVISED
 5-28-2010



SURVEY NO.	SURVEYED
NOTE BOOK NO.	PLOTTED
	DATE
	AREAS
	CHECKED

SURVEY NO.	SURVEYED
NOTE BOOK NO.	PLOTTED
	DATE
	AREAS
	CHECKED

FILE NAME = D468704-shr-plan.dgn	USER NAME = K. KILMAN	DESIGNED -	REVISED -	STATE OF ILLINOIS DEPARTMENT OF TRANSPORTATION	CROSS SECTIONS IL 17 - LOCATION 2	F.A.P. RTE. 639	SECTION (125)I-1	COUNTY MERCER	TOTAL SHEETS 33	SHEET NO. 29	
	PLLOT SCALE = 20.0000 / / IN.	DRAWN - KKK	REVISED -			SCALE: 1"=10'H/5'V	SHEET NO. OF SHEETS	STA.	CONTRACT NO. 68929		
	PLLOT DATE = 5/27/2010	CHECKED -	REVISED -			FED. ROAD DIST. NO. ILLINOIS FED. AID PROJECT					
		DATE -	REVISED -								

THIS SHEET WAS INTENTIONALLY LEFT BLANK.



SHEET
REVISED
 5-28-2010

1-1-97		T.P.			
3-11-03	ELIMINATED SILT FENCE DITCH CHECK	M.A.			

STATE OF ILLINOIS
 DEPARTMENT OF TRANSPORTATION

NOT TO SCALE

TYPICAL APPLICATION OF SILT FILTER FENCE

CADD STD. 280001-D4

F.A. RTE.	SECTION	COUNTY	TOTAL SHEETS	SHEET NO.
639	(125)I-1	MERCER	33	30
FED. ROAD DIST. NO. ILLINOIS FED. AID PROJECT			CONTRACT NO. 68929	

THIS SHEET WAS INTENTIONALLY LEFT BLANK.



 SHEET
REVISED
 5-28-2010

01-01-97	RENUM. J-12.08 AND J-12.09, NEW FORMAT, METRICS,	T.P.	10-16-06	REVISED TO 2007 SPEC.	M.A.	STATE OF ILLINOIS DEPARTMENT OF TRANSPORTATION	PRECAST CONCRETE BOX CULVERTS (SPECIAL), END SECTION (SPECIAL), & DROP BOX END SECTIONS (SPECIAL)	F.A.	SECTION	COUNTY	TOTAL	SHEET	
	NEW REVISION BOX, NOTES							639	(125)I-1	MERCER	33	32	
05-01-97	CORRECT TITLE & GEN. NOTES	J.A.											
06-17-99	CORRECT DIMENSIONS	J.A.											
							NOT TO SCALE	SHT. 1 OF 2	CADD STD. 540401-D4 <small>FED. ROAD DIST. NO. ILLINOIS FED. AID PROJECT</small>				
											CONTRACT NO. 68929		

THIS SHEET WAS INTENTIONALLY LEFT BLANK.

△
**SHEET
REVISED**
5-28-2010

STATE OF ILLINOIS
DEPARTMENT OF TRANSPORTATION

NOT TO SCALE

PRECAST CONCRETE BOX CULVERTS (SPECIAL),
END SECTION (SPECIAL), &
DROP BOX END SECTIONS (SPECIAL)

SHT. 2 OF 2
CADD STD. 540401-D4

F.A. RTE.	SECTION	COUNTY	TOTAL SHEETS	SHEET NO.
639	(125)I-1	MERCER	33	33
CONTRACT NO. 68929				
FED. ROAD DIST. NO. ILLINOIS FED. AID PROJECT				