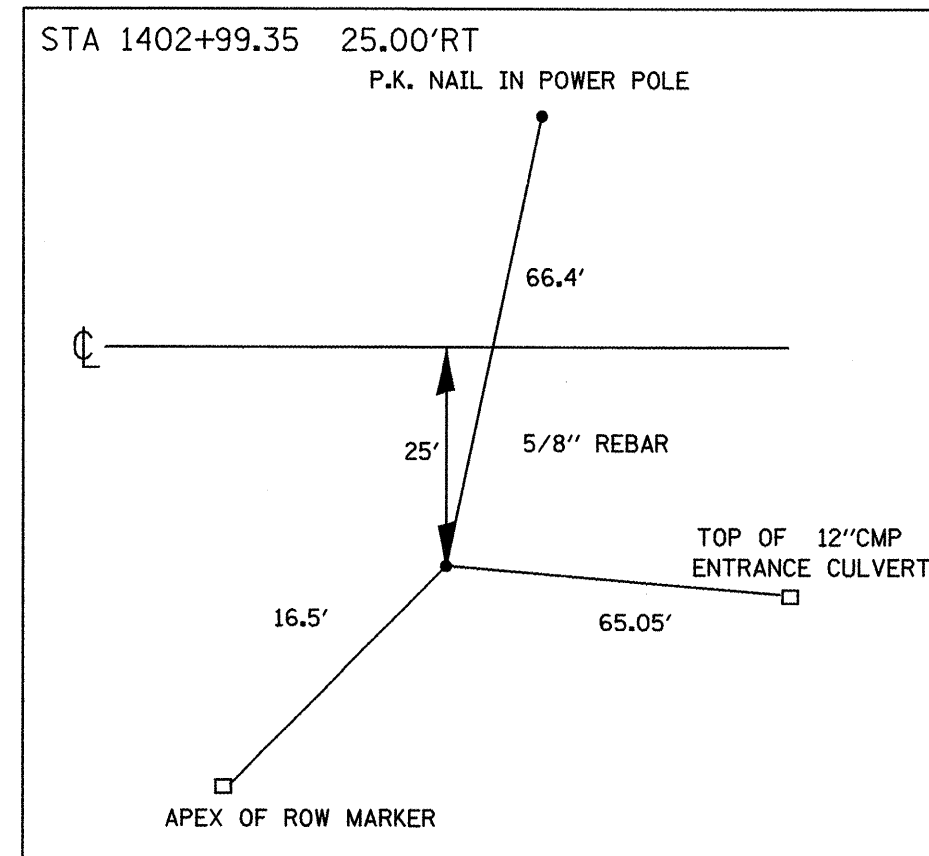
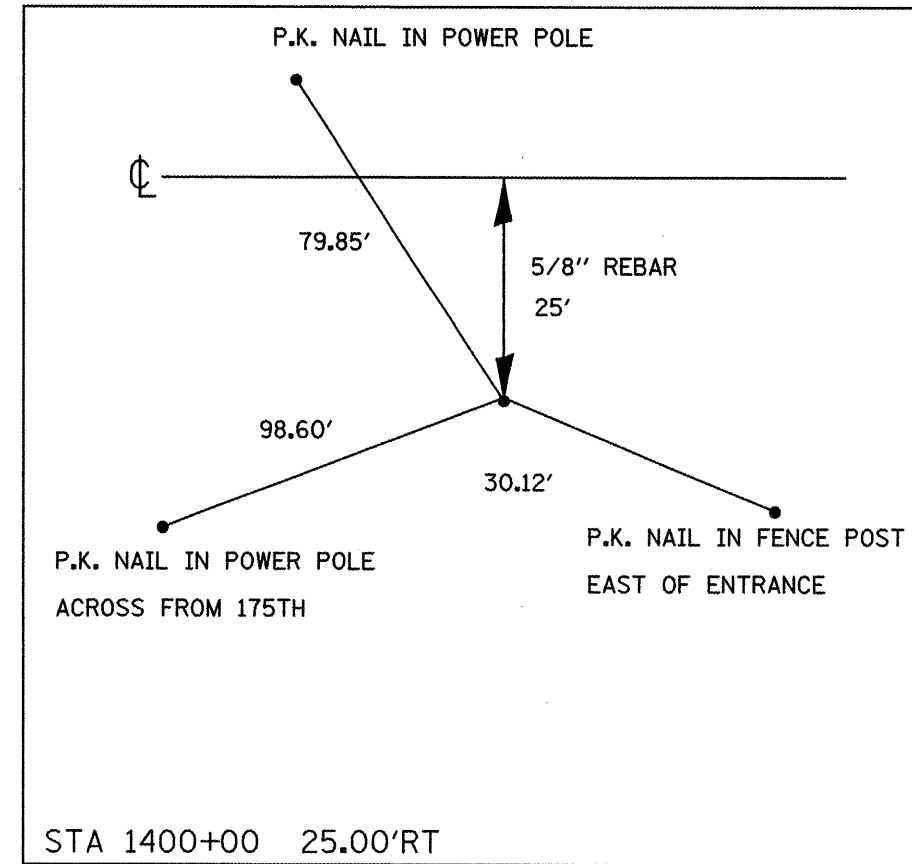


BM# 1 ELEV. 667.92  
 NAIL IN POWER POLE @ STA.1402+90,  
 40' LT

BM# 2 ELEV. 655.00  
 UPSTREAM FLOWLINE OF ENTRANCE  
 TO BOX CULVERT



FILE NAME = IL116CULCSAUG.dgn	USER NAME = eschhornbr	DESIGNED -	REVISED -
		DRAWN -	REVISED -
		CHECKED -	REVISED -
		DATE -	REVISED -

**STATE OF ILLINOIS  
 DEPARTMENT OF TRANSPORTATION**

REFERENCE TIES AND BENCHMARKS NOT TO SCALE			
SCALE:	SHEET NO. OF SHEETS	STA.	TO STA.

F.A.P. RTE. 665	SECTION (1401)-1	COUNTY WARREN	TOTAL SHEETS 18	SHEET NO. 7
CONTRACT NO. 68931				
ILLINOIS FED. AID PROJECT				