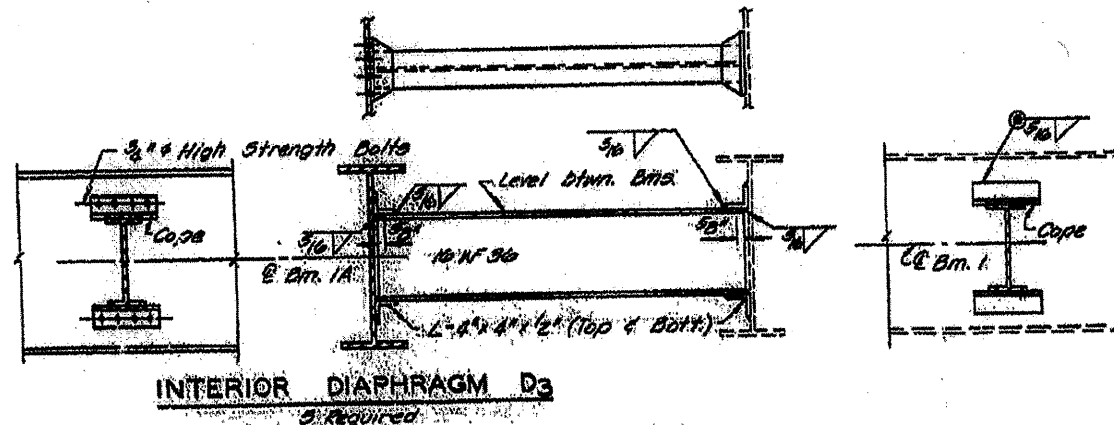
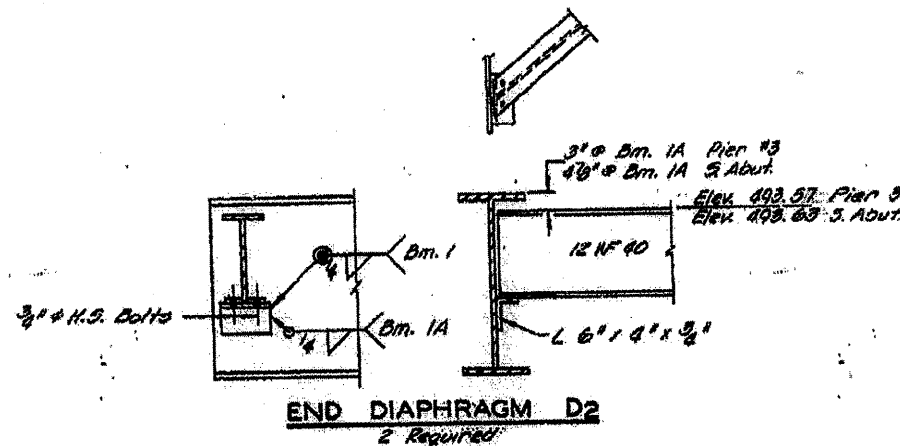
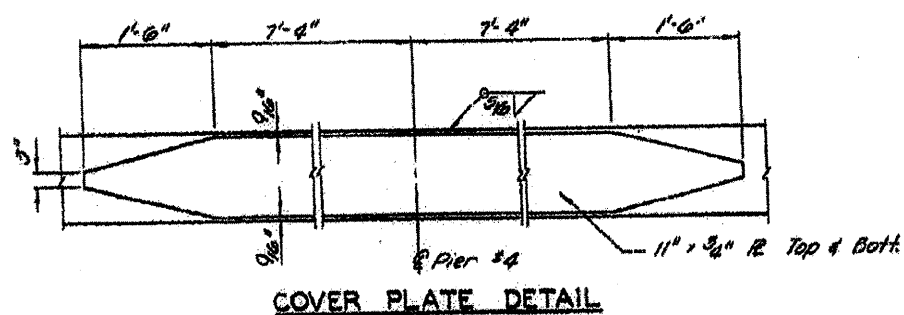
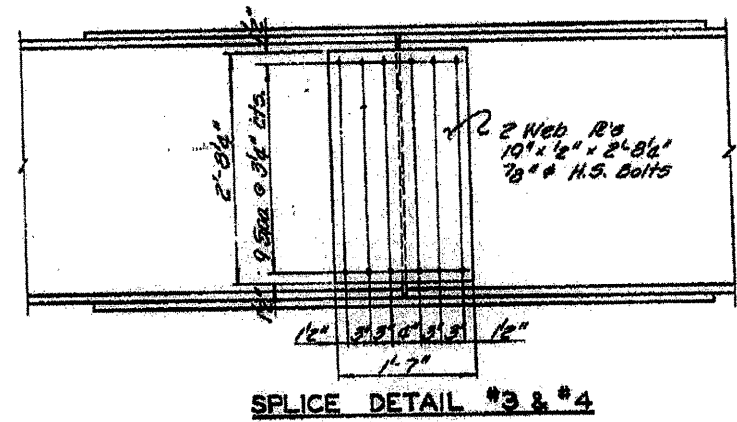
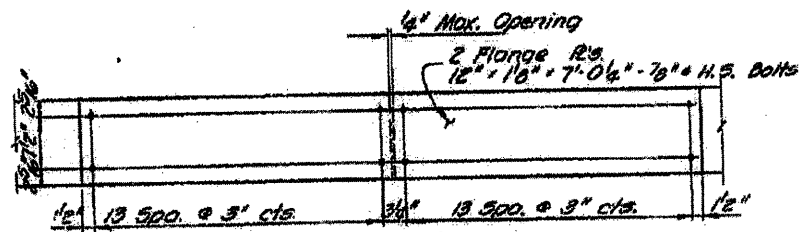
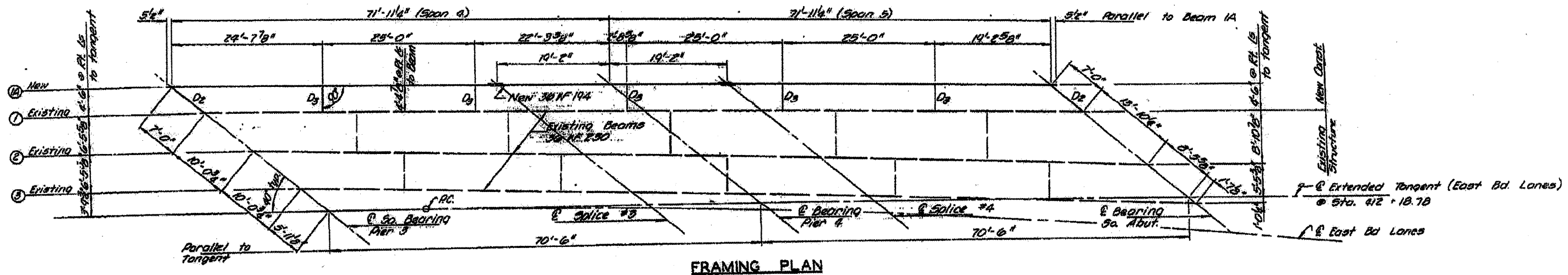


# LOCATION 3 072-0009 ADDED BEAM LINE SPANS 4 & 5



**TOP OF BEAM 1A ELEV**

B.S. Brg. Pier 3	Splice 3	B. Brg. Pier #4	Splice 4	B. Brg. S. Abut.
493.82	493.92	493.95	493.98	494.04

**WIDENING**  
**STRUCTURAL STEEL - UNIT I**  
FA. RTE. 10 SEC. 45VHB-  
PEORIA COUNTY  
STATION 411+32.88