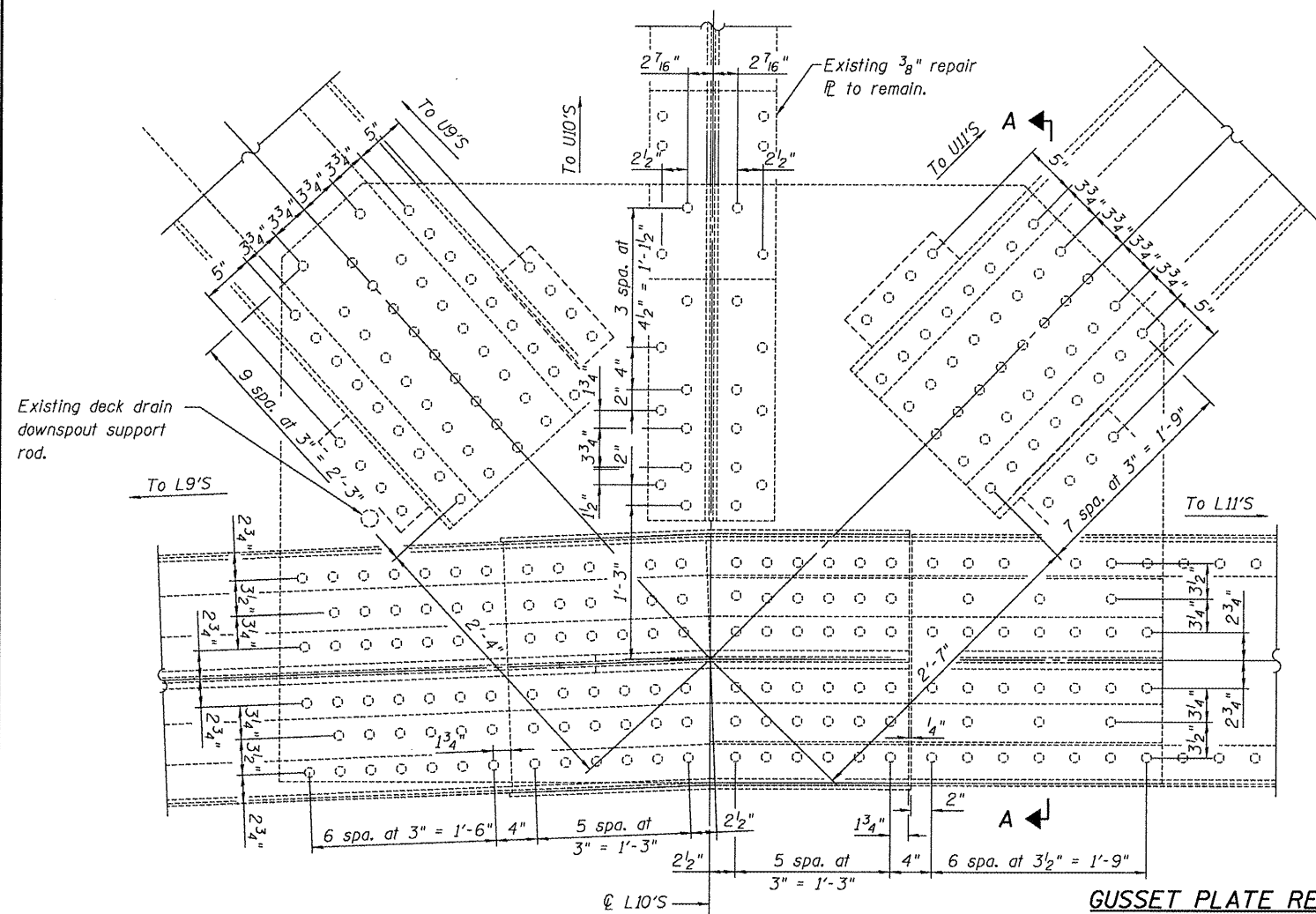
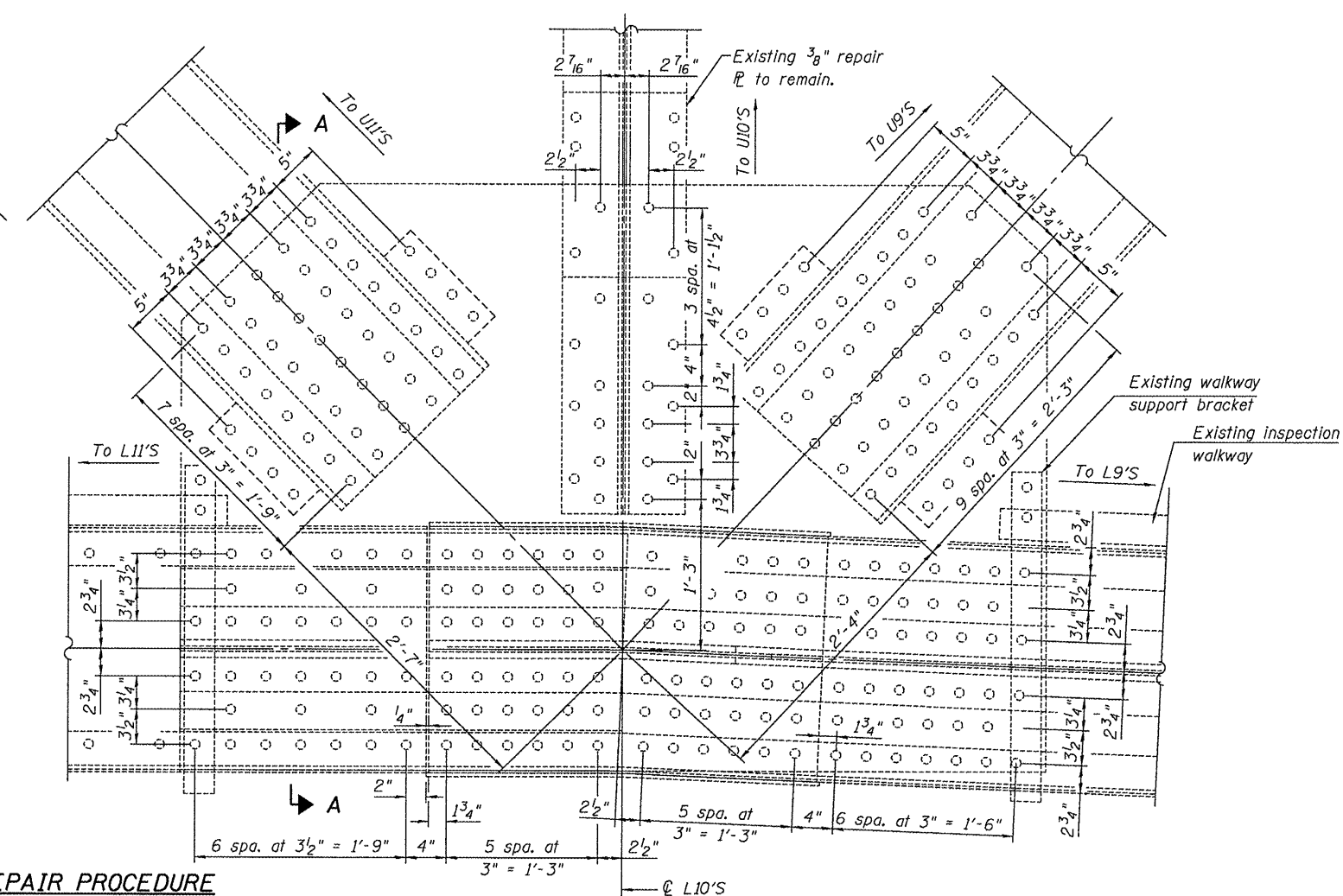


STATE OF ILLINOIS  
DEPARTMENT OF TRANSPORTATION

Filename: L:\Jobs\DOT BBS\7199 BBS Various\199.07\CADD\CADD Sheets\0900030-00000-3-25-10.dgn  
 Date: 6/10/2010 2:36:45 PM  
 Operator: gjameson



**ELEVATION - EXISTING**  
(Looking North at outside gusset)



**ELEVATION - EXISTING**  
(Looking South at inside gusset)  
(Lateral Bracing not shown for clarity)

**GUSSET PLATE REPAIR PROCEDURE**

1. Remove diagonal member extending from L10'S to U10'N as indicated in Section A-A on sheet 10 of 13 and replace with new full-length angles as indicated on sheet 11 of 13.
2. Temporarily support diagonal brace extending from L10'S to center gusset plate as indicated in Section A-A on sheet 10 of 13. Contractor has the option of removing diagonal brace and reinstalling after gusset plate repair is complete.
3. Install Temporary Lateral Bracing System as indicated on sheet 11 of 13.
4. Remove existing lateral bracing connection plates and angles at L10'S. Rivets extending through the inside gusset plate and into the lateral bracing connection angles to be removed, as indicated on sheet 10 of 13, shall be removed and replaced with a H.S. Bolt one at a time. After removal of the lateral bracing connection angles, the first nut and washer, as shown in Detail "A" on sheet 13 of 13 shall be installed and fully tightened.
5. Cut the ends of the existing lateral bracing members to remain in place as indicated on sheet 10 of 13.
6. Remove existing walkway support brackets and deck drain downspout support rod connected to existing gusset plates.
7. Remove existing gusset plate rivets and replace with H.S. bolts. Existing rivets shall be replaced with H.S. bolts one at a time. As each rivet is replaced with a H.S. bolt, the first washer and nut, as shown in Detail A on sheet 13 of 13, shall be installed and fully tighten.
8. Clean and paint the existing gusset plates as detailed on sheet 13 of 13.
9. Field verify the layout of the proposed H.S. bolts and order and install new gusset plates, connection plates and connection angles as indicated on sheet 12 and 13 of 13.
10. Install second washer and nut on double-nut gusset plate bolts and fully tighten.
11. Reconnect lateral bracing members, reinstall existing walkways, support brackets and downspout support rod.
12. Remove Temporary Lateral Bracing System.

**Notes:**

The existing rivet spacings and gusset plate dimensions are shown for information only. The Contractor shall field verify prior to ordering materials.

Temporary support of the existing lateral bracing members during repair of existing inside gusset plate is required. Cost included with "Temporary Support System".

Work this sheet with sheet 10 thru 13 of 13.

**SPAN 15 L10'S GUSSET P REPAIR DETAILS**  
**STRUCTURE NO. 090-0030**

DESIGNED - SDS
CHECKED - FLL
DRAWN - DLH
CHECKED - SDS

**WHKS & CO.**  
ENGINEERING  
7018 KINGSMILL CT.,  
SPRINGFIELD, IL  
(217) 483-9457  
DESIGN FIRM #184001036

•• PEORIA

SHEET NO. 9	F.A. RTE.	SECTION	COUNTY	TOTAL SHEETS	SHEET NO.
13 SHEETS	669	103B-I-5	••	18	14
				CONTRACT NO. 68987	
ILLINOIS FED. AID PROJECT					