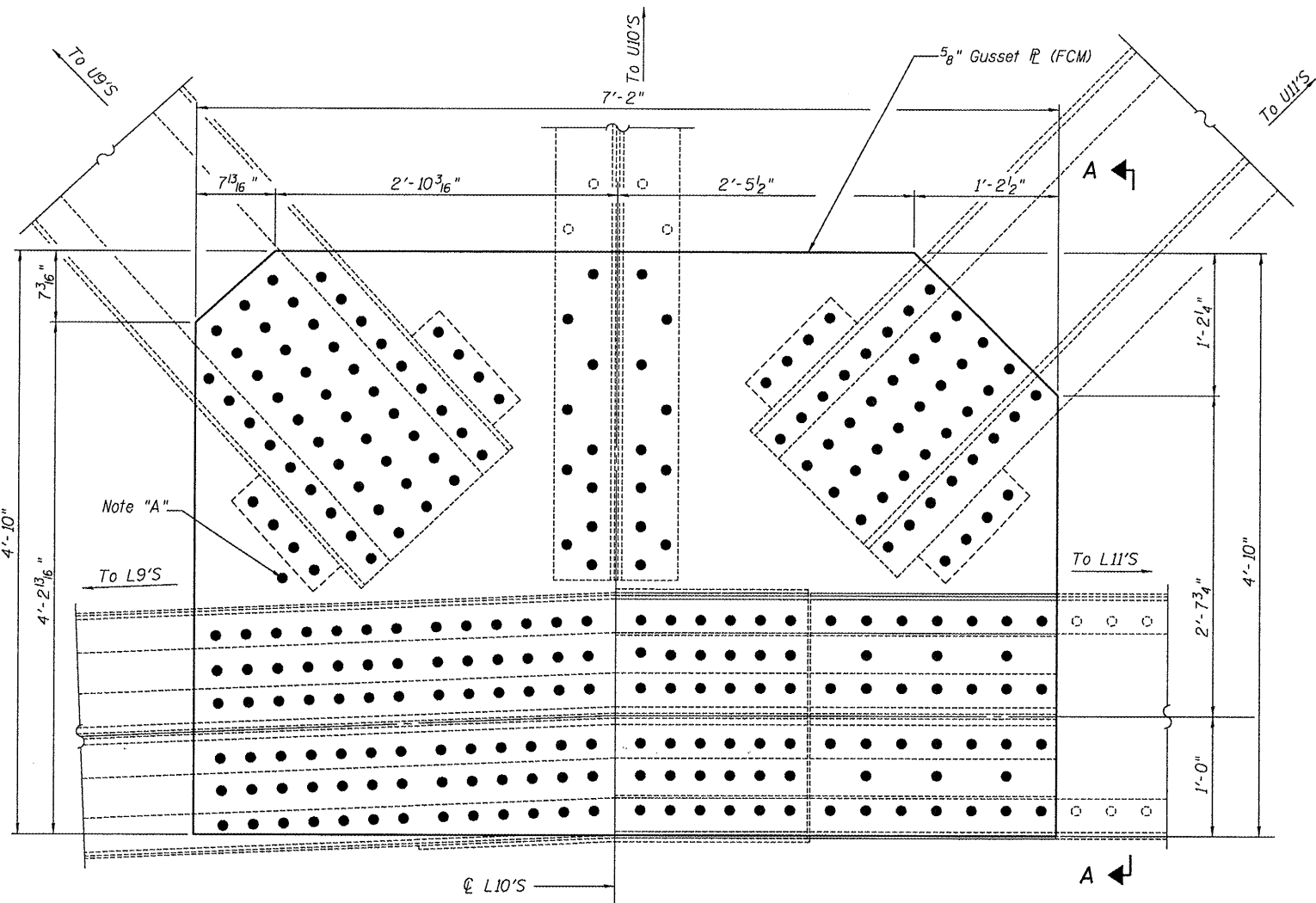
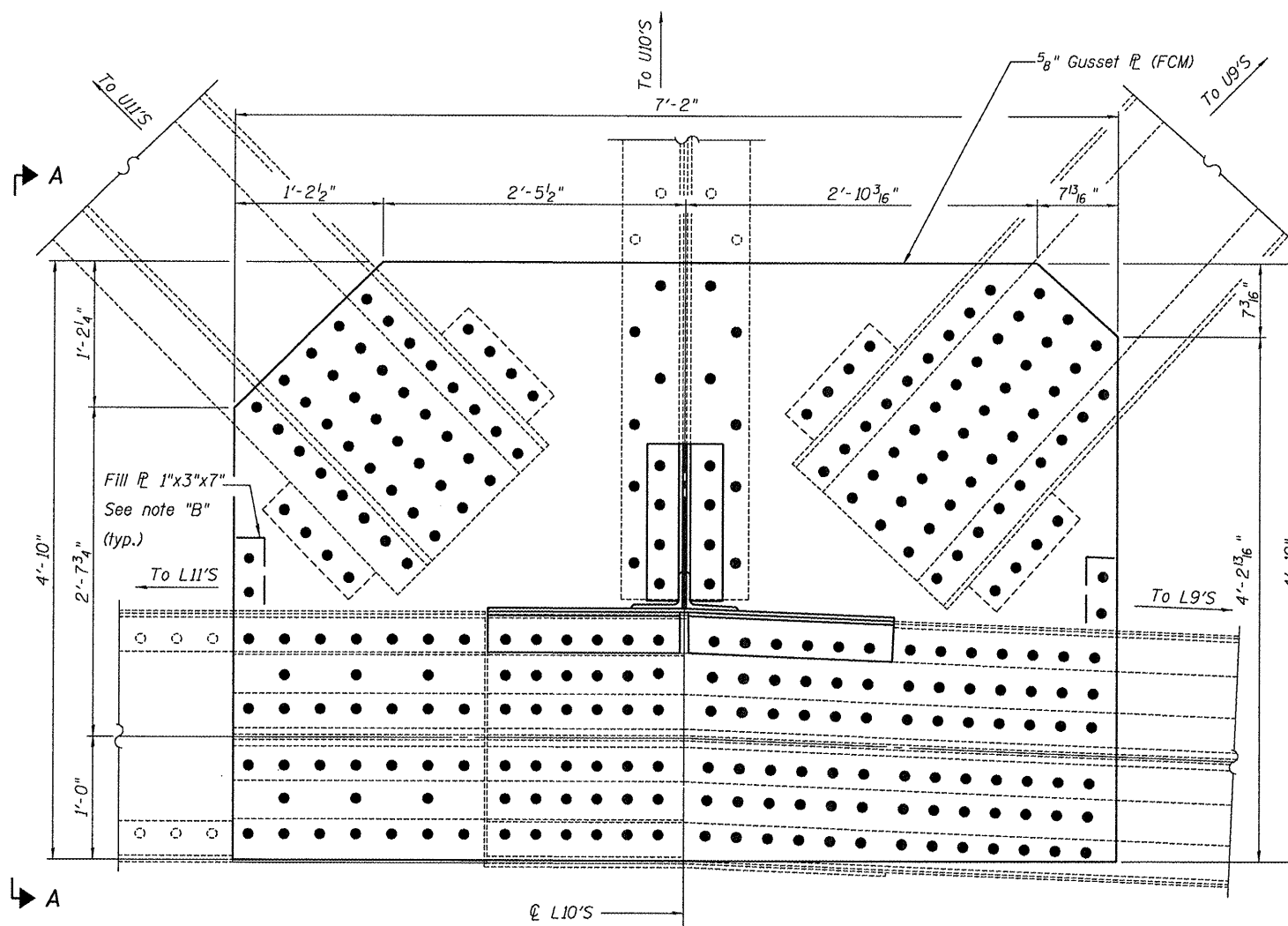


STATE OF ILLINOIS
DEPARTMENT OF TRANSPORTATION



ELEVATION - PROPOSED
(Looking North at outside gusset)



ELEVATION - PROPOSED
(Looking South at inside gusset)

BILL OF MATERIAL

ITEM	UNIT	TOTAL
Structural Steel Repair	Pound	2,860

Notes:

Dimensions of the proposed gusset plates shall match the existing gusset plates. Contractor shall field verify dimensions prior to ordering materials.

Work this sheet with sheets 9 thru 11 of 13.

Note A:

Field drill 2" ϕ hole in proposed gusset plate for deck drain downspout support rod. Extend support rod through holes in proposed and existing gusset plates and install new nut on threaded rod on the inside face of the existing gusset plate.

Note B:

Field drill 1 5/16" ϕ holes for the existing walkway supports in the proposed gusset plate to match holes in the existing gusset plate. Place fill plate between new and proposed gusset plates prior to reattaching the existing walkway supports.

SPAN 15 L10'S GUSSET P REPAIR DETAILS
STRUCTURE NO. 090-0030

DESIGNED - SDS
CHECKED - FLL
DRAWN - DLH
CHECKED - SDS

WHKS & CO.
ENGINEERING
7018 KINGSMILL CT.,
SPRINGFIELD, IL
(217) 483-9457
DESIGN FIRM #184001036

•• PEORIA

SHEET NO. 12	F.A. RTE.	SECTION	COUNTY	TOTAL SHEETS	SHEET NO.
13 SHEETS	669	103B-1-5	••	18	17
				CONTRACT NO. 68987	
ILLINOIS FED. AID PROJECT					

Operator: gjameson
 Date: 6/10/2010 2:36:50 PM
 Filename: L:\Jobs\DOT BBS\7199 BBS Various\Various\7199.07\CADD\CADD Sheets\0900030-000003-25-10.dgn