

STATE OF ILLINOIS
DEPARTMENT OF TRANSPORTATION
DIVISION OF HIGHWAYS

**PROPOSED
HIGHWAY PLANS**

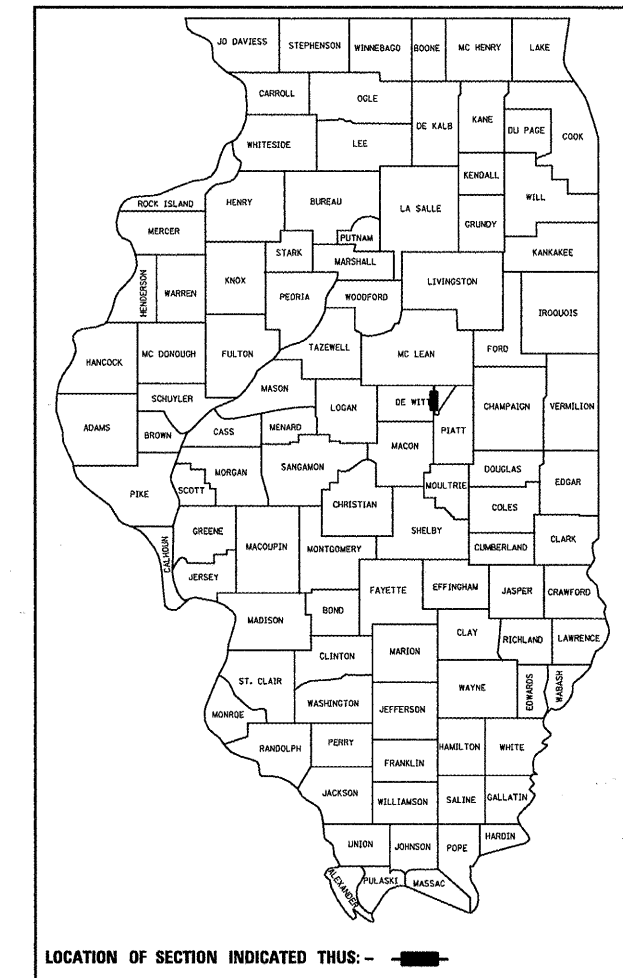
F.A.P ROUTE 760 (IL-48)
SECTION 124 BR-1

**BRIDGE DECK REPAIRS
CLINTON LAKE 4 MI NORTH OF WELDON
DEWITT COUNTY**

C-95-051-06

F.A.P. RTE.	SECTION	COUNTY	TOTAL SHEETS	SHEET NO.
760	124 BR-1	DEWITT	23	1
		ILLINOIS	CONTRACT NO. 70531	

D-95-050-06



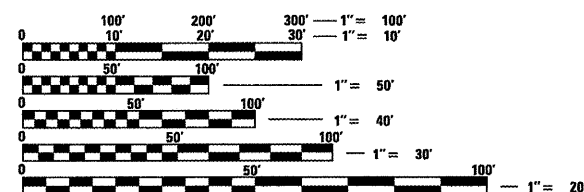
LOCATION OF SECTION INDICATED THIS: - ■ -

FOR INDEX OF SHEETS, SEE SHEET NO. 2
FOR SUMMARY OF QUANTITIES, SEE SHEET NO. 3

**CURRENT
TRAFFIC DATA**

2010 ADT = 950
2030 ADT = 1,100
PU + PC % = 81.4
SU % = 9.6
MU% = 9.0

**DESIGN DESIGNATION
MINOR ARTERIAL**

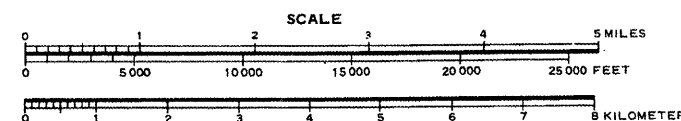
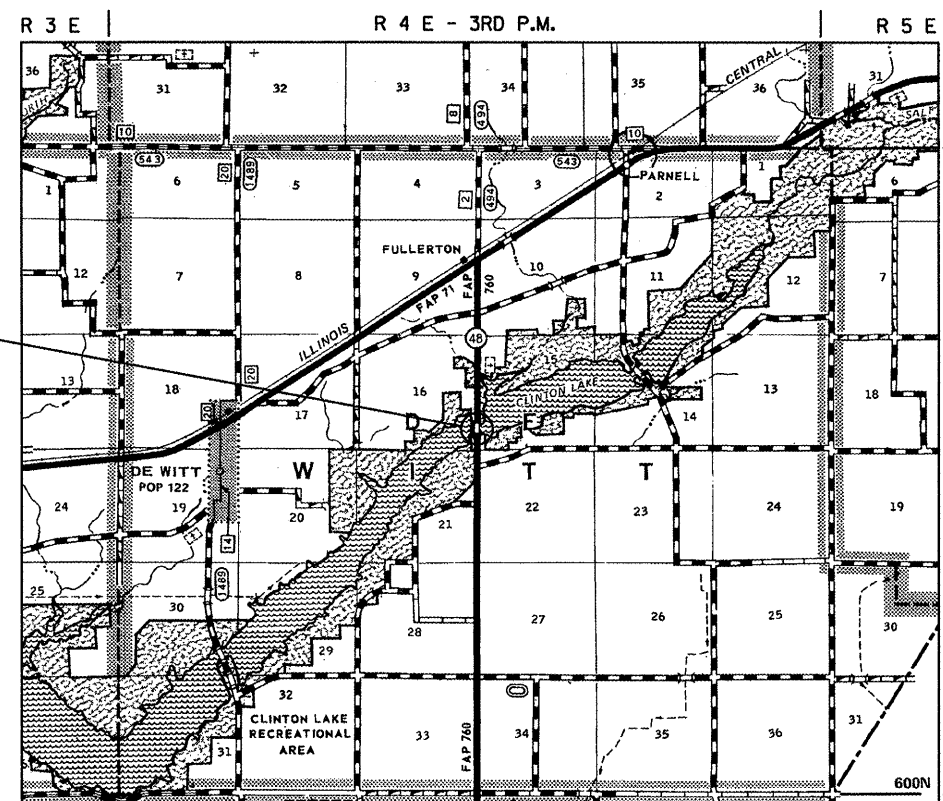


FULL SIZE PLANS HAVE BEEN PREPARED USING STANDARD ENGINEERING SCALES. REDUCED SIZED PLANS WILL NOT CONFORM TO STANDARD SCALES. IN MAKING MEASUREMENTS ON REDUCED PLANS, THE ABOVE SCALES MAY BE USED.

J.U.L.I.E.
JOINT UTILITY LOCATION INFORMATION FOR EXCAVATION
1-800-892-0123
OR 811 DE WITT TOWNSHIP

PROJECT ENGINEER: TIM BRANDENBURG
PROJECT MANAGER: GARY SIMS
217-465-4181
CONTRACT NO. 70531

EXISTING S.N. 020-0045
F.A.P. 760 (IL-48) OVER
SALT CREEK (CLINTON LAKE)
STATION 274+16.50
PROPOSED STRUCTURE REPAIRS



GROSS LENGTH = 351.83 FT. = 0.067 MILE
NET LENGTH = 351.83 FT. = 0.067 MILE

STATE OF ILLINOIS
DEPARTMENT OF TRANSPORTATION
DIVISION OF HIGHWAYS

SUBMITTED 2/25 20 10
Frank E. Brown
DEPUTY DIRECTOR OF HIGHWAYS, REGION ENGINEER

May 7 20 10
Scott E. Slitt, P.E. & Assoc.
ENGINEER OF DESIGN AND ENVIRONMENT

May 7 20 10
Christine M. Roedler
DIRECTOR OF HIGHWAYS, CHIEF ENGINEER

**PRINTED BY THE AUTHORITY
OF THE STATE OF ILLINOIS**

INDEX OF SHEETS

SHEET NO.	DESCRIPTION
1	COVER SHEET
2	INDEX OF SHEETS
2	LIST OF STANDARDS
2	GENERAL NOTES
3	SUMMARY OF QUANTITIES
4	GENERAL PLAN & ELEVATION
5	WEARING SURFACE & APPROACH OVERLAY PLAN
6	DECK & APPROACH CROSS SECTIONS
7	WATERPROOFING MEMBRANE SYSTEM
8	AS-BUILT PATCHING PLAN
9	JOINT REPAIR DETAILS
10	P.P.C. I-BEAM REPAIRS
11	COMPRESSION BLOCK REPAIRS
12-19	AS-BUILT STRUCTURE PLANS - FOR INFORMATION ONLY
20-23	PAVEMENT MARKING AND MARKERS (RURAL & URBAN APPLICATIONS)

LIST OF HIGHWAY STANDARDS

STANDARD NO.	DESCRIPTION
000001-05	STANDARD SYMBOLS, ABBREVIATIONS AND PATTERNS
001006	DECIMAL OF AN INCH AND OF A FOOT
701301-03	LANE CLOSURE, 2L, 2W, SHORT TIME OPERATIONS
701311-03	LANE CLOSURE, 2L, 2W, MOVING OPERATIONS - DAY ONLY
701316-04	LANE CLOSURE, 2L, 2W, BRIDGE REPAIR, FOR SPEEDS > 45 MPH
701901-01	TRAFFIC CONTROL DEVICES
780001-02	TYPICAL PAVEMENT MARKINGS
781001-03	TYPICAL APPLICATIONS OF RAISED REFLECTIVE PAVEMENT MARKERS

701201-03

GENERAL NOTES

GENERAL NOTES

G.N.-100

ENGLISH UNITS OF MEASUREMENT SHALL GOVERN OVER AND SUPERSEDE ANY METRIC UNITS SHOWN IN THIS CONTRACT. WHERE INCLUDED, METRIC UNITS ARE FOR INFORMATION ONLY.

G.N.-107.31

UTILITY LINES WERE PLOTTED FROM INFORMATION FURNISHED BY THE VARIOUS UTILITY COMPANIES INVOLVED (QUALITY LEVEL C&OR QUALITY LEVEL D) AND THE ACCURACY SHOULD BE CONSIDERED APPROXIMATE ONLY.

UTILITY COMPANIES MAY BE ADJUSTING THEIR FACILITIES DURING CONSTRUCTION. THE CONTRACTOR SHALL COOPERATE WITH THESE ORGANIZATIONS WHILE THESE ADJUSTMENTS ARE BEING PERFORMED. J.U.L.I.E. - JOINT UTILITY LOCATION INFORMATION FOR EXCAVATORS SYSTEM (800)892-0123 OR 811.

G.N.-406

THE QUANTITIES INCLUDED IN THE PLANS FOR HOT-MIX ASPHALT RESURFACING ARE INTENDED TO GIVE THE COVERAGE SHOWN ON THE TYPICAL CROSS SECTIONS. IT IS NOT INTENDED TO INCREASE THE THICKNESS OF THE HOT-MIX ASPHALT MIXTURE IN ORDER TO USE ALL OF THE QUANTITIES INCLUDED IN THE CONTRACT.

G.N.-406H

MIXTURE REQUIREMENTS

THE FOLLOWING MIXTURE REQUIREMENTS ARE APPLICABLE FOR THIS PROJECT:

Location	IL 48
Mixture Use	Surface
AC/PG	PG 64-22
RAP % (Max)	15
Design Air Voids	4.0% @ Ndes=50
Mix Comp(Gradation)	IL 9.5
Friction Aggregate	Mix C

G.N.-781

RAISED REFLECTIVE PAVEMENT MARKERS SHALL BE PLACED IN ACCORDANCE WITH STANDARD 781001, AND THE DETAILS SHOWN IN THE PLANS. IF THERE IS ANY DISCREPANCY BETWEEN THE STANDARD AND THE DETAILS IN THE PLANS, THE DETAILS IN THE PLANS SHALL GOVERN. THE FINAL PAVEMENT MARKINGS SHALL BE IN PLACE PRIOR TO PLACING THE RAISED REFLECTIVE PAVEMENT MARKERS AND THE RAISED REFLECTIVE PAVEMENT MARKERS SHALL BE PLACED MIDWAY IN THE 30 FOOT (9m) SPACE BETWEEN THE DASHED CENTERLINE STRIPES (WHEN APPLICABLE).

FILE NAME :	USER NAME = smsgm	DESIGNED - GMS	REVISED - ---	STATE OF ILLINOIS DEPARTMENT OF TRANSPORTATION	INDEX OF SHEETS, LIST OF STANDARDS & GENERAL NOTES	F.A.P. RTE.	SECTION	COUNTY	TOTAL SHEETS	SHEET NO.
c:\pwork\PMIDOT\SMSGM\d0179794\057831-sht-Bridge Repair Plans.dgn	DRAWN - GMS	REVISED - ---	760			124 BR-1	DEWITT	23	2	
PLOT SCALE = 40.0001' / IN.	CHECKED - ---	REVISED - ---	CONTRACT NO. 70531							
PLOT DATE = 2/25/2010	DATE - -----	REVISED - ---	FED. ROAD DIST. NO. - [ILLINOIS] FED. AID PROJECT							

SUMMARY OF QUANTITIES

DEWITT CO.
RURAL
TWO LANE
100% STATE
MINOR
STRUCTURE
REPAIR

SFTY-2A
S.N. 020-0045

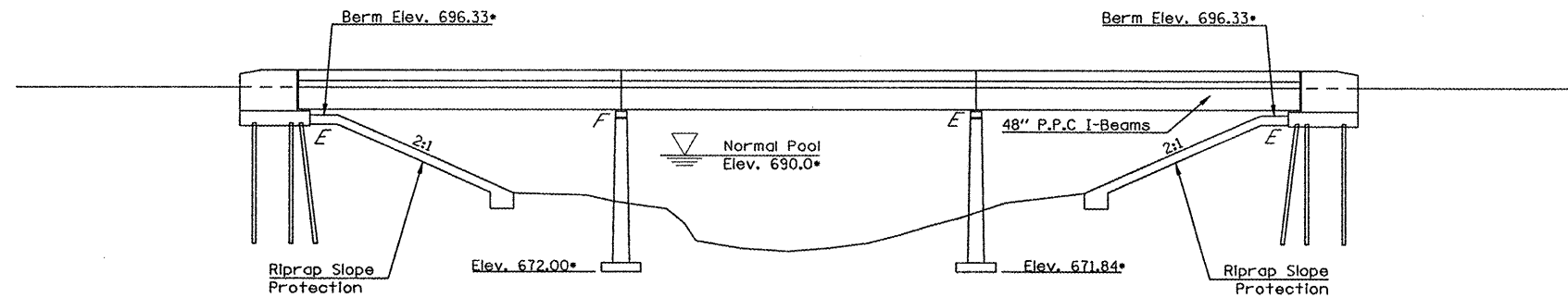
CODE NO	ITEM	UNIT	TOTAL QUANTITY
40600100	BITUMINOUS MATERIALS (PRIME COAT)	GAL	47.0
40603310	HOT-MIX ASPHALT SURFACE COURSE, MIX C, N-50	TON	143.0
44000156	HOT-MIX ASPHALT SURFACE REMOVAL, 1 3/4"	SQ YD	470.0
44000915	HOT-MIX ASPHALT SURFACE REMOVAL (DECK)	SQ YD	1070.0
58100200	WATERPROOFING MEMBRANE SYSTEM	SQ YD	1083.0
67100100	MOBILIZATION	L SUM	1.0
70100100	TRAFFIC CONTROL AND PROTECTION, STANDARD 701316	EACH	1.0
70100450	TRAFFIC CONTROL AND PROTECTION, STANDARD 701201	L SUM	1.0
70106500	TEMPORARY BRIDGE TRAFFIC SIGNALS	EACH	1.0
* 78001110	PAINT PAVEMENT MARKING, LINE 4"	FOOT	781.0
* 78100100	RAISED REFLECTIVE PAVEMENT MARKER	EACH	5.0
* 78300200	RAISED REFLECTIVE PAVEMENT MARKER REMOVAL	EACH	5.0
X0320887	POLYMER CONCRETE	CU FT	14.5
X0321744	SILICONE JOINT SEALER, 2"	FOOT	90.0
X0322905	PRECAST PRESTRESSED CONCRETE I-BEAM REPAIRS	L SUM	1.0
X0325682	PUMPABLE CONCRETE MIX	CU FT	3.0
Z0016000	DECK SLAB REPAIR (FULL DEPTH)	SQ YD	54.0
Z0016200	DECK SLAB REPAIR (PARTIAL)	SQ YD	160.0

* SPECIALTY ITEMS

FILE NAME =	USER NAME = simsgn	DESIGNED - GMS	REVISED - ----	STATE OF ILLINOIS DEPARTMENT OF TRANSPORTATION	SUMMARY OF QUANTITIES	F.A.P. RTE.	SECTION	COUNTY	TOTAL SHEETS	SHEET NO.
c:\pwork\pwork\DOT\NSHSGM\0179794\0570231-shr-Br-idge Repair Plans.dgn	DRAWN - GMS	REVISED - ----	760			124 BR-1	DEWITT	23	3	
PLOT SCALE = 41.6516" / IN.	CHECKED - ----	REVISED - ----	CONTRACT NO. 70531							
PLOT DATE = 2/19/2018	DATE - ----	REVISED - ----	FED. ROAD DIST. NO. - [ILLINOIS] FED. AID PROJECT							

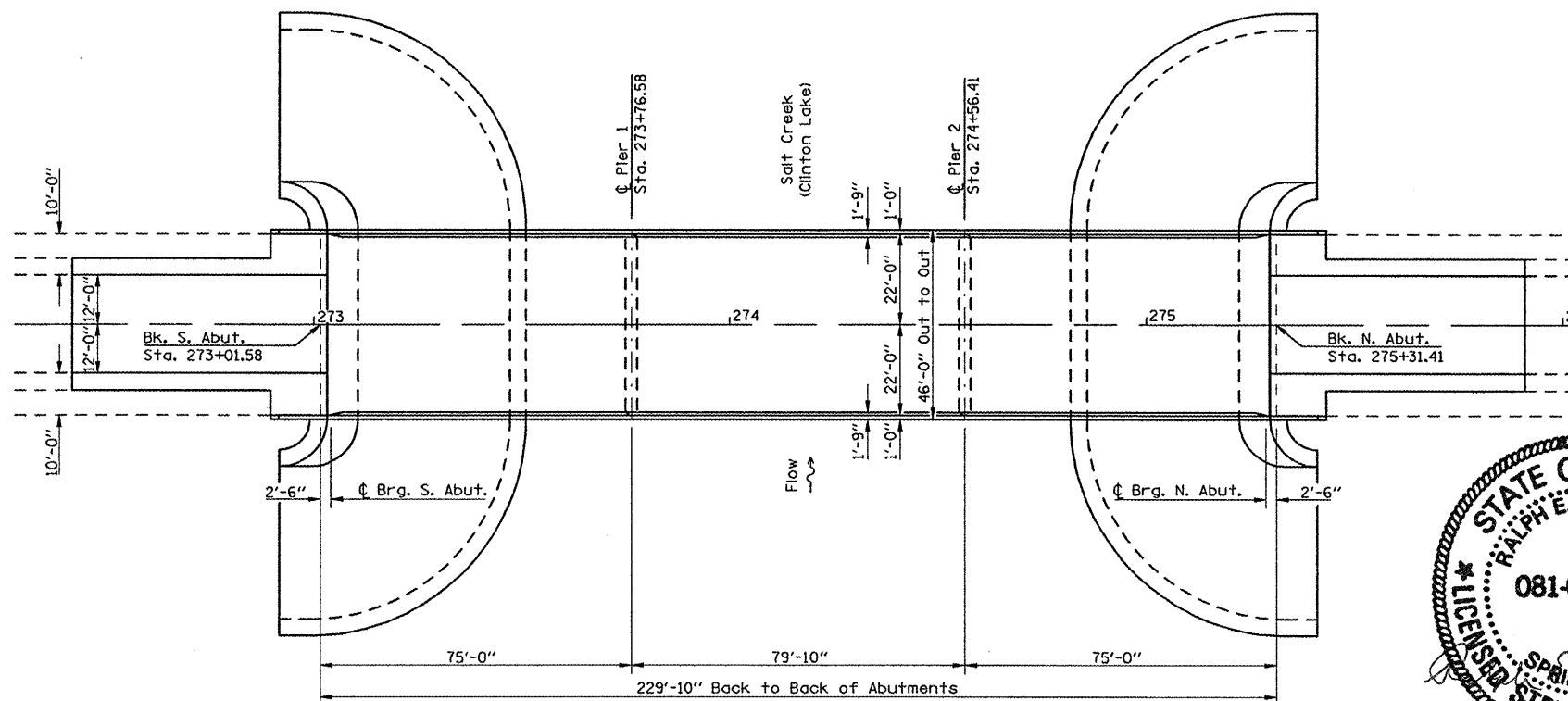
GENERAL PLAN & ELEVATION

S.N. 020-0045



ELEVATION

* Elevations shown have been taken from As-Built plans and are included for perspective only.



PLAN

THE EXISTING STRUCTURE WAS BUILT IN 1976 BY THE STATE OF ILLINOIS AS F.A. ROUTE 65, SECTION 124BR AT STATION 274+16.50 IN DEWITT COUNTY. THE STRUCTURE CARRIES F.A.P. 760 (IL-48) OVER SALT CREEK (CLINTON LAKE) APPROXIMATELY 4 MILES NORTH OF WELDON.

THE SUPERSTRUCTURE CONSISTS OF AN 8" R.C. DECK WITH A WATERPROOFING MEMBRANE SYSTEM AND A 1 1/2" H.M.A. WEARING SURFACE SUPPORTED BY SIX 48" P.P.C. I-BEAMS. THE SUPERSTRUCTURE IS SUPPORTED BY TWO TAPERED-STEM PIERS ON SPREAD FOOTINGS AND STEEL PILES AND TWO SPILL-THRU ABUTMENTS ON STEEL PILES. THE STRUCTURE MEASURES 229'-10" FROM BACK TO BACK OF ABUTMENTS. THE DECK HAS A CLEAR WIDTH OF 42'-6" FROM FACE TO FACE OF CURB AND AN OUT-TO-OUT WIDTH OF 46'-0".

METHOD OF CONSTRUCTION: STAGE CONSTRUCTION
SEE PROPOSED IMPROVEMENTS ON THIS SHEET.

PROPOSED WORK

1. REMOVE EXISTING WATERPROOFING MEMBRANE SYSTEM AND H.M.A. WEARING SURFACE ON DECK.
2. MILL 1 3/4" OVER APPROACH PAVEMENTS.
3. PLACE NEW WATERPROOFING MEMBRANE SYSTEM AND 1 1/2" H.M.A. WEARING SURFACE ON BRIDGE DECK.
4. PLACE H.M.A. OVERLAY ON APPROACH PAVEMENTS.
5. REPLACE EXISTING NEOPRENE EXPANSION JOINTS WITH POLYMER CONCRETE NOSING AND SILICONE JOINT SEALER.

TOTAL BILL OF MATERIALS

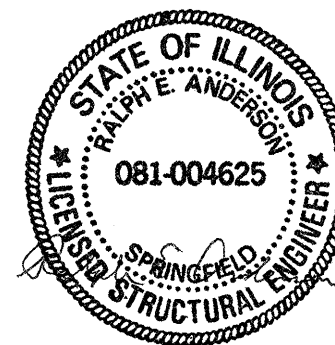
ITEM	UNIT	TOTAL
H.M.A. SURFACE REMOVAL (DECK)	SQ YD	1070.0
H.M.A. SURFACE REMOVAL, 1 3/4"	SQ YD	470.0
WATERPROOFING MEMBRANE SYSTEM	SQ YD	1083.0
H.M.A. SURFACE CSE. MIX C, N-50	TON	143.0
DECK SLAB REPAIR (PARTIAL)	SQ YD	160.0
DECK SLAB REPAIR (FULL-DEPTH)	SQ YD	54.0
BITUMINOUS MATERIALS (PRIME COAT)	GAL	47.0
SILICONE JOINT SEALER, 2"	FOOT	90.0
POLYMER CONCRETE	CU FT	14.5
P.P.C. I-BEAM REPAIRS	L SUM	1.0
PUMPABLE CONCRETE MIX	CU FT	3.0

GENERAL NOTES

PLAN DIMENSIONS AND DETAILS RELATIVE TO THE EXISTING PLANS ARE SUBJECT TO NOMINAL CONSTRUCTION VARIATIONS. THE CONTRACTOR SHALL FIELD VERIFY EXISTING DIMENSIONS AND DETAILS AFFECTING NEW CONSTRUCTION AND MAKE NECESSARY APPROVED ADJUSTMENTS PRIOR TO CONSTRUCTION OR ORDERING OF MATERIALS. SUCH VARIATIONS SHALL NOT BE CAUSE FOR ADDITIONAL COMPENSATION FOR A CHANGE IN SCOPE OF WORK, HOWEVER, THE CONTRACTOR WILL BE PAID FOR THE QUANTITY ACTUALLY FURNISHED AT THE UNIT PRICE BID FOR THE WORK.

SEE SPECIAL PROVISION "DECK SLAB REPAIR" FOR ADDITIONAL REQUIREMENTS PERTAINING TO DECK SLAB REPAIR AND H.M.A. SURFACE REMOVAL (DECK).

THE EXISTING STRUCTURE HAS BEEN FOUND TO CONTAIN NO ASBESTOS.

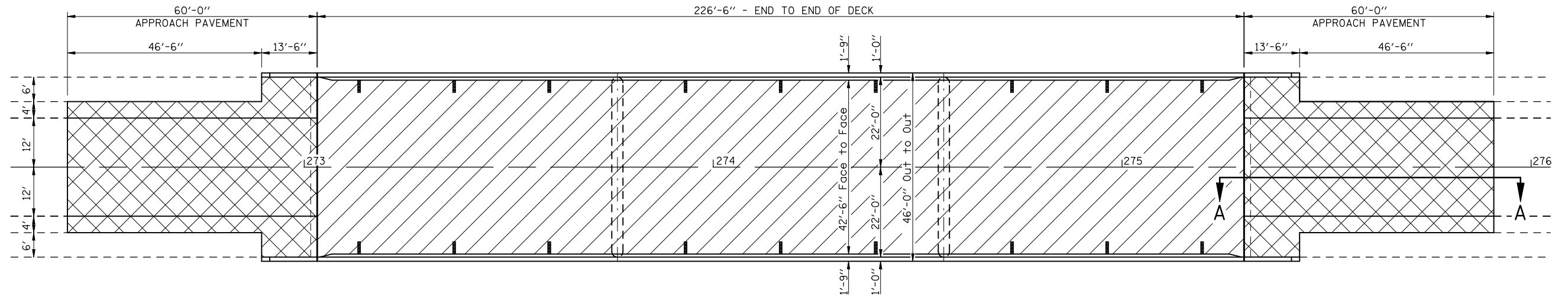


Expires 11/30/2010

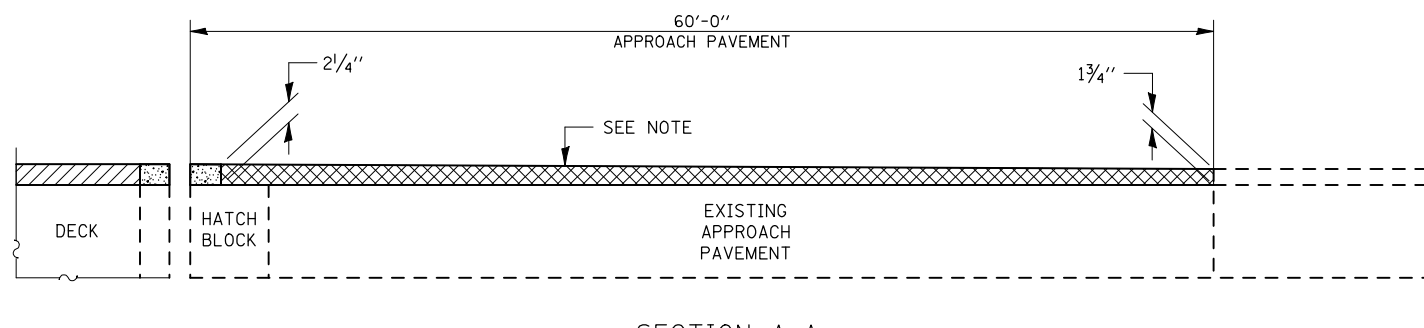
FILE NAME =	USER NAME = smsgm	DESIGNED - GMS	REVISED -	STATE OF ILLINOIS DEPARTMENT OF TRANSPORTATION	GENERAL PLAN & ELEVATION S.N. 020-0045	F.A.P. RTE.	SECTION	COUNTY	TOTAL SHEETS	SHEET NO.	
c:\pwork\p\WIDOT\SIMS\01\0570	31-shr-bridge Repair Plans.dgn	DRAWN - GMS	REVISED -			760	124 BR-1	DEWITT	23	4	
	PLOT SCALE = 41.6516" / IN.	CHECKED -	REVISED -			CONTRACT NO. 70531					
	PLOT DATE = 2/19/2010	DATE -	REVISED -			FED. ROAD DIST. NO. - ILLINOIS FED. AID PROJECT					

WEARING SURFACE & APPROACH OVERLAY PLAN

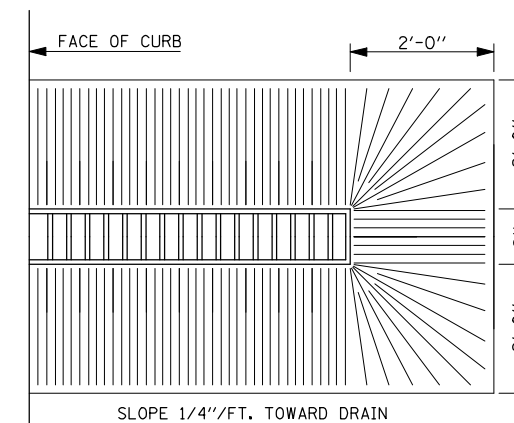
S.N. 020-0045



PLAN



SECTION A-A
(SHOWING RESURFACING TRANSITION OVER APPROACH PAVEMENTS)



PLAN VIEW
AT DRAIN

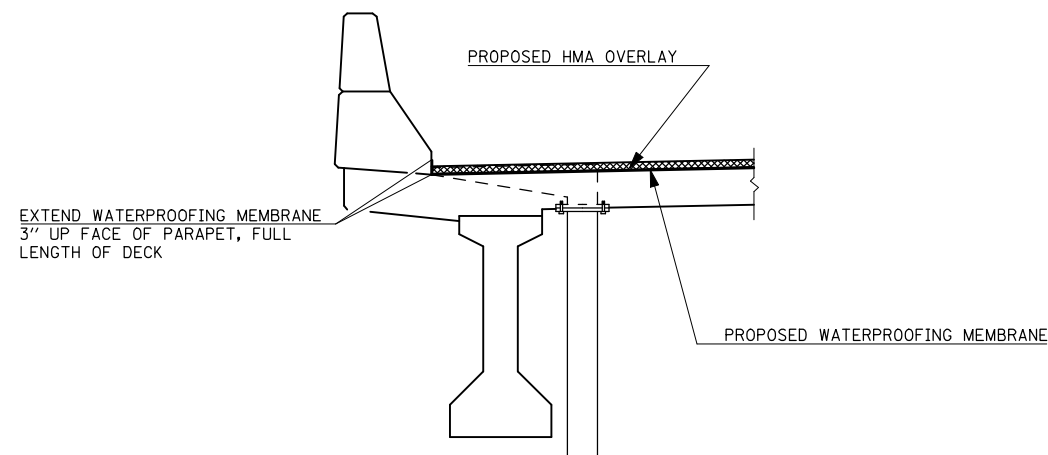
NOTE:
TRANSITION AREA TO BE MILLED SHALL BE INCLUDED IN THE CONTRACT UNIT PRICE FOR H.M.A. SURFACE REMOVAL, 1 3/4" AND NO ADDITIONAL COMPENSATION SHALL BE ALLOWED FOR THE VARIABLE THICKNESS.

LEGEND

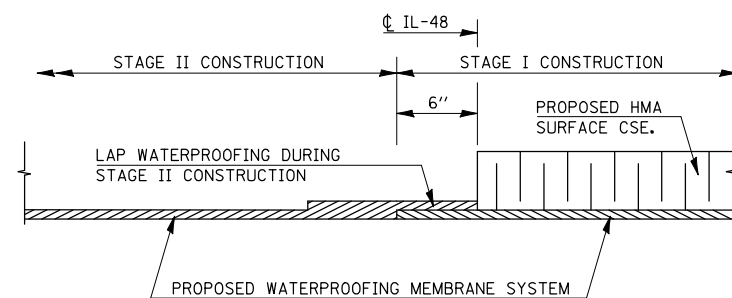
- H.M.A. SURFACE REMOVAL (DECK) & PROPOSED 1/2" H.M.A. WEARING SURFACE AND WATERPROOFING MEMBRANE SYSTEM
- H.M.A. SURFACE REMOVAL, 1 3/4" & PROPOSED H.M.A. SURFACE OVER APPROACHES - SEE NOTE
- EXISTING DRAINAGE SCUPPER, TO BE REUSED.

BILL OF MATERIALS

ITEM	UNIT	TOTAL
H.M.A. SURFACE REMOVAL (DECK)	SQ YD	1070.0
H.M.A. SURFACE REMOVAL, 1 3/4"	SQ YD	470.0
WATERPROOFING MEMBRANE SYSTEM	SQ YD	1083.0
H.M.A. SURFACE COURSE, MIX C, N-50	TON	143.0
BITUMINOUS MATERIALS (PRIME COAT)	GAL	47.0



SECTION AT DRAIN



WATERPROOFING TREATMENT
AT STAGE CONSTRUCTION

FILE NAME =	USER NAME = smsgm	DESIGNED - GMS	REVISED - ---
ct:\pwork\VPWIDDOT\SIMSGM\d0179794\05708	31-sht-Bridge Repair Plans.dgn	DRAWN - GMS	REVISED - ---
	PLOT SCALE = 41.6516' / IN.	CHECKED - ---	REVISED - ---
	PLOT DATE = 2/19/2010	DATE - ---	REVISED - ---

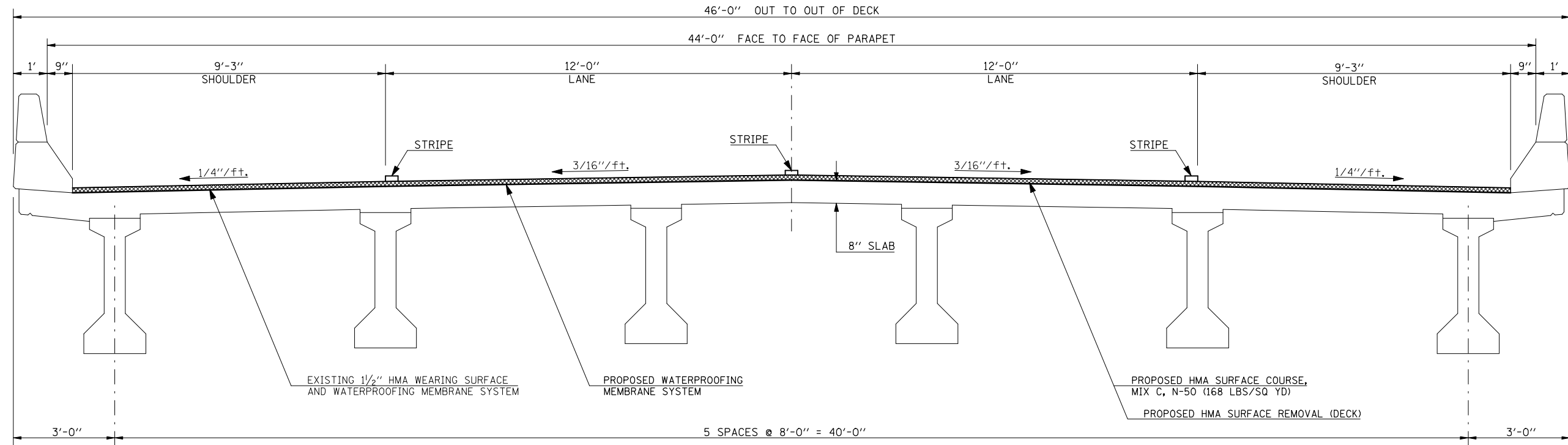
**STATE OF ILLINOIS
DEPARTMENT OF TRANSPORTATION**

**WEARING SURFACE & APPROACH OVERLAY PLAN
S.N. 020-0045**

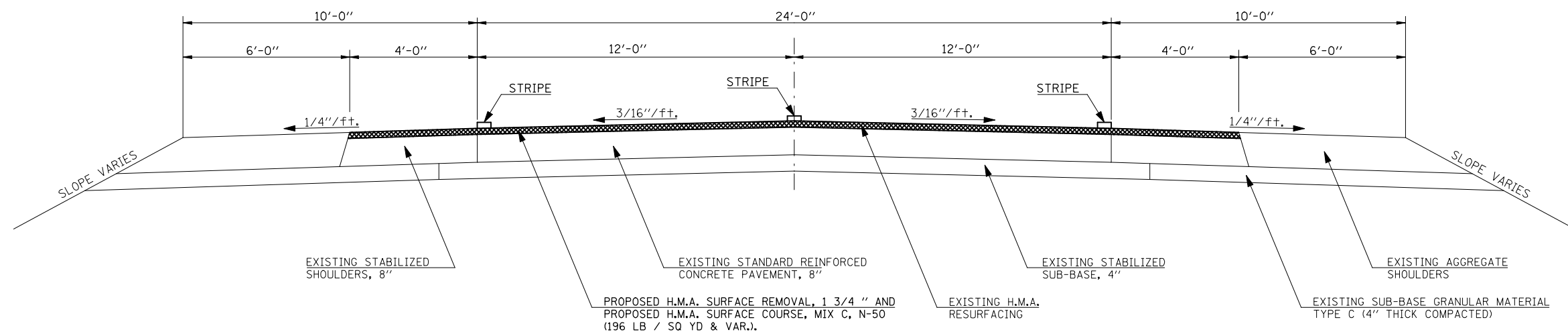
SCALE: _____ SHEET NO. 2 OF 16 SHEETS STA. _____ TO STA. _____

F.A.P. RTE.	SECTION	COUNTY	TOTAL SHEETS	SHEET NO.
760	124 BR-1	DEWITT	23	5
CONTRACT NO. 70531				
FED. ROAD DIST. NO. - ILLINOIS FED. AID PROJECT				

CROSS SECTIONS S.N. 020-0045



DECK CROSS SECTION



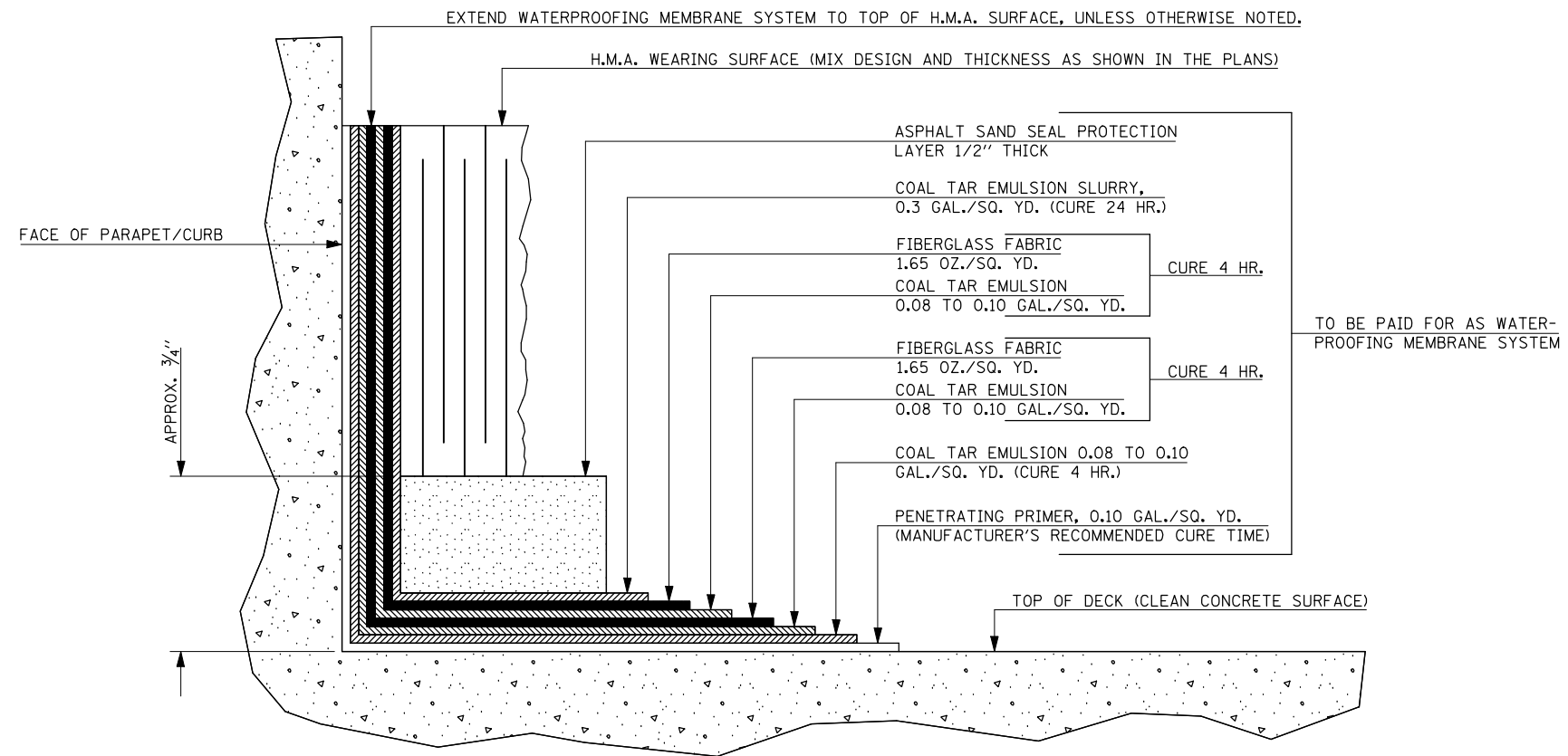
TYPICAL APPROACH ROADWAY CROSS SECTION

FILE NAME =	USER NAME = smsgm	DESIGNED - GMS	REVISED - ---	STATE OF ILLINOIS DEPARTMENT OF TRANSPORTATION	CROSS SECTIONS S.N. 020-0045	F.A.P. RTE.	SECTION	COUNTY	TOTAL SHEETS	SHEET NO.	
ct:\pwork\PWIDOT\SIMSGM\d0179794\05705	31-sht-Bridge Repair Plans.dgn	DRAWN - GMS	REVISED - ---			760	124 BR-1	DEWITT	23	6	
	PLOT SCALE = 41.6516' / IN.	CHECKED - ---	REVISED - ---			CONTRACT NO. 70531					
	PLOT DATE = 2/19/2010	DATE - ---	REVISED - ---			FED. ROAD DIST. NO. - ILLINOIS FED. AID PROJECT					

SCALE: _____ SHEET NO. 3 OF 16 SHEETS STA. _____ TO STA. _____

WATERPROOFING MEMBRANE SYSTEM

S.N. 020-0045

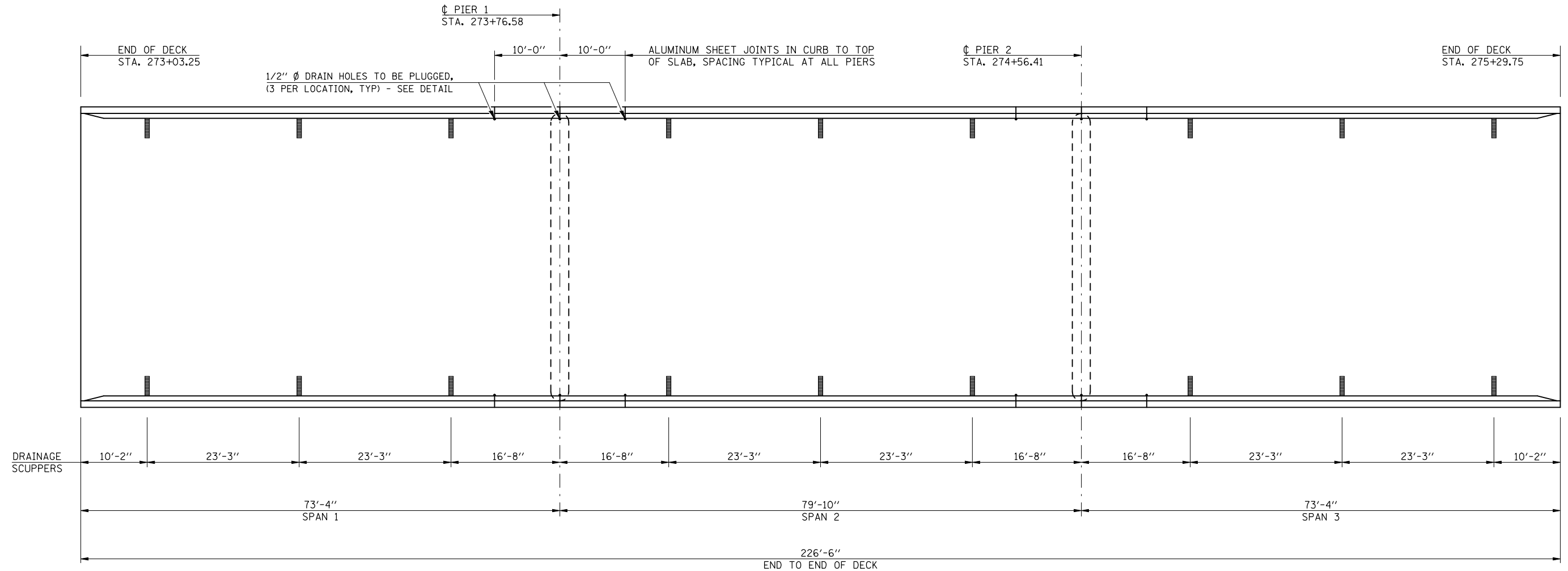


NOTES

THIS DETAIL HAS BEEN INCLUDED TO ILLUSTRATE THE ASSOCIATED LAYERS AND CURE TIMES NECESSARY FOR THE PLACEMENT OF THE WATERPROOFING MEMBRANE SYSTEM. THIS DETAIL SHALL SUPPLEMENT, NOT SUPERSEDE, SECTION 581 OF THE STANDARD SPECIFICATIONS.

FILE NAME =	USER NAME = s1msgm	DESIGNED - GMS	REVISED - ---	STATE OF ILLINOIS DEPARTMENT OF TRANSPORTATION	WATERPROOFING MEMBRANE SYSTEM S.N. 020-0045	F.A.P. RTE.	SECTION	COUNTY	TOTAL SHEETS	SHEET NO.	
ct:\pwork\PWIDOT\S1MSGM\d0179794\05708	31-sht-Bridge Repair Plans.dgn	DRAWN - GMS	REVISED - ---			760	124 BR-1	DEWITT	23	7	
	PLOT SCALE = 41.6516' / IN.	CHECKED - ---	REVISED - ---			CONTRACT NO. 70531					
	PLOT DATE = 2/19/2010	DATE - -----	REVISED - ---			FED. ROAD DIST. NO. - ILLINOIS FED. AID PROJECT					
					SCALE: -----		SHEET NO. 4 OF 16 SHEETS		STA. ----- TO STA. -----		

AS-BUILT PATCHING PLAN S.N. 020-0045



BILL OF MATERIALS

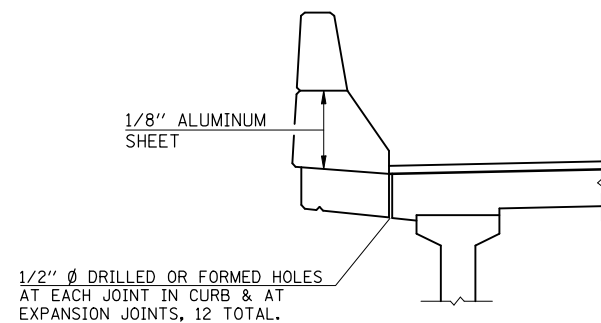
ITEM	UNIT	TOTAL
DECK SLAB REPAIR (PARTIAL)	SQ YD	160.0
DECK SLAB REPAIR (FULL-DEPTH)	SQ YD	54.0

NOTES

AREA OF DECK SLAB REPAIR HAS BEEN ESTIMATED. THE ACTUAL QUANTITY AND LOCATIONS SHALL BE DETERMINED BY THE ENGINEER AFTER THE EXISTING H.M.A. WEARING SURFACE AND WATERPROOFING MEMBRANE ARE REMOVED. THE ENGINEER SHALL SHOW THE ACTUAL LOCATIONS OF THE DECK REPAIRS ON THIS SHEET.

CARE SHALL BE TAKEN TO PREVENT DAMAGE TO THE EXISTING DRAINAGE SCUPPERS. IF THE EXISTING SCUPPERS ARE DAMAGED DURING CONSTRUCTION, THE CONTRACTOR WILL BE RESPONSIBLE FOR PROVIDING AND INSTALLING AN APPROVED REPLACEMENT AT NO ADDITIONAL COST TO THE DEPARTMENT.

ALL (QTY. 12) 1/2" Ø DRAIN HOLES AT CURB JOINTS SHALL BE FILLED WITH A TWO COMPONENT NON-STAINING GRAY SEALING COMPOUND WITH POLYSULFIDE LIQUID POLYMERS - GUN GRADE WITH PRIMER. COST TO BE INCLUDED WITH DECK SLAB REPAIR.



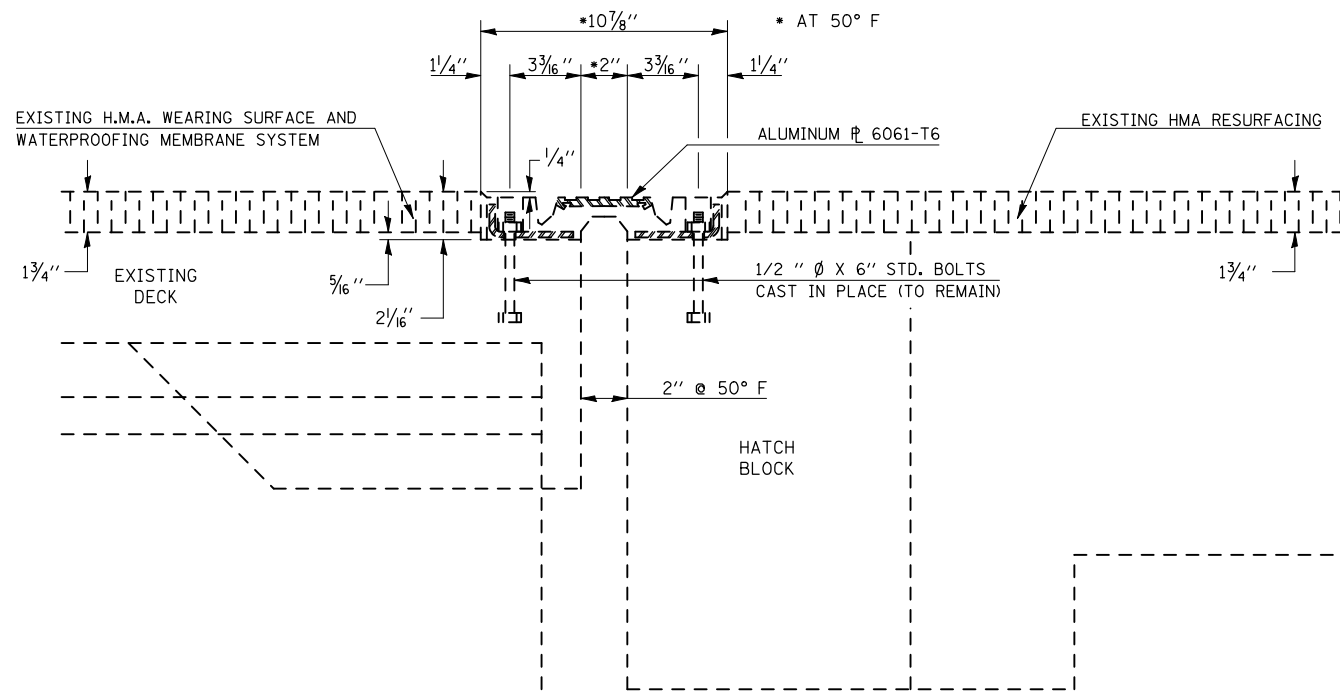
DETAIL OF DRAIN HOLES AT CURB JOINTS
(TO BE PLUGGED) - SEE NOTES, THIS SHEET

FILE NAME =	USER NAME = smsgm	DESIGNED - GMS	REVISED - ---	STATE OF ILLINOIS DEPARTMENT OF TRANSPORTATION	AS-BUILT PATCHING PLAN S.N. 020-0045	F.A.P. RTE.	SECTION	COUNTY	TOTAL SHEETS	SHEET NO.	
ct:\pwork\PWIDOT\SMSGM\d0179794\05708	31-sht-Bridge Repair Plans.dgn	DRAWN - GMS	REVISED - ---			760	124 BR-1	DEWITT	23	8	
	PLOT SCALE = 41.6516' / IN.	CHECKED - ---	REVISED - ---			CONTRACT NO. 70531					
	PLOT DATE = 2/19/2010	DATE - ---	REVISED - ---			FED. ROAD DIST. NO. - ILLINOIS FED. AID PROJECT					

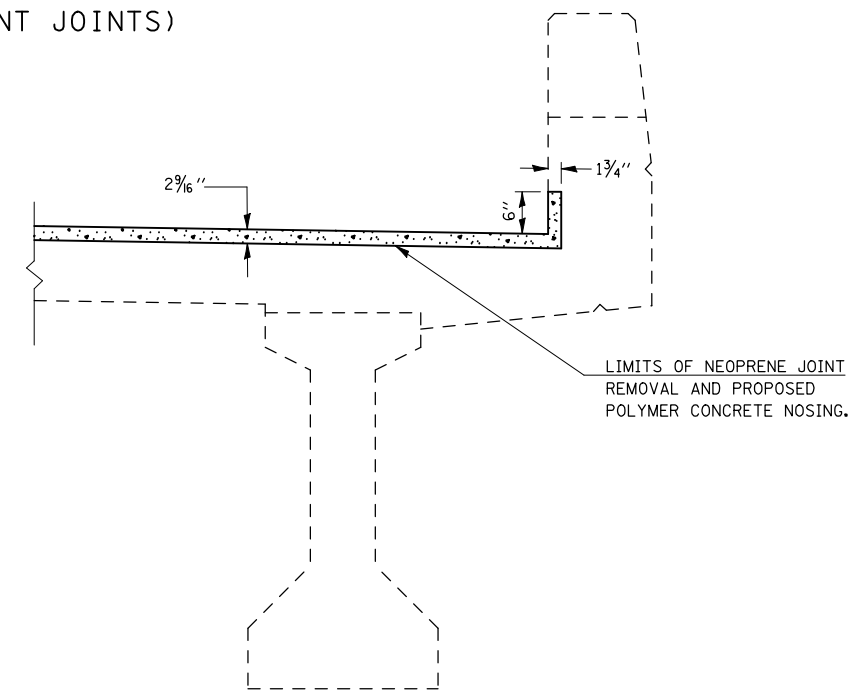
JOINT REPAIR DETAILS

S.N. 020-0045

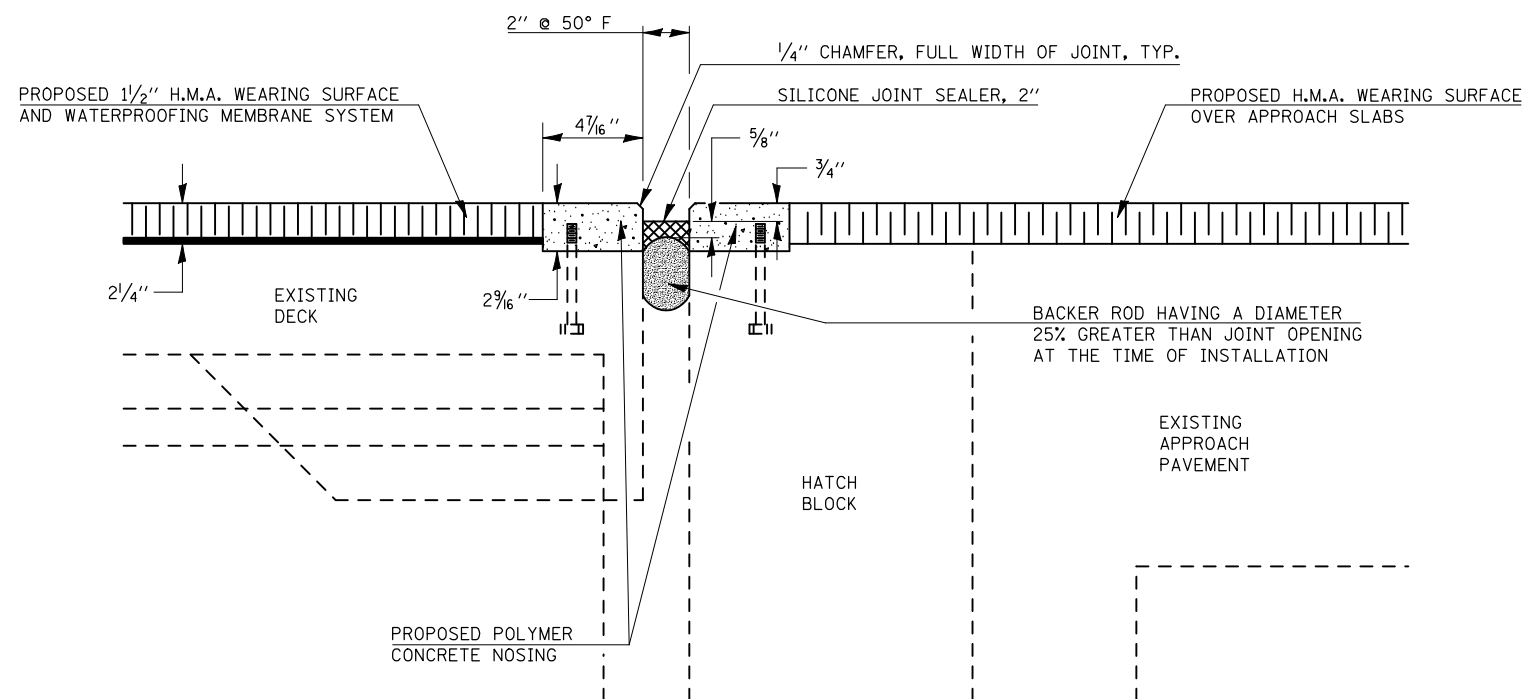
(NORTH AND SOUTH ABUTMENT JOINTS)



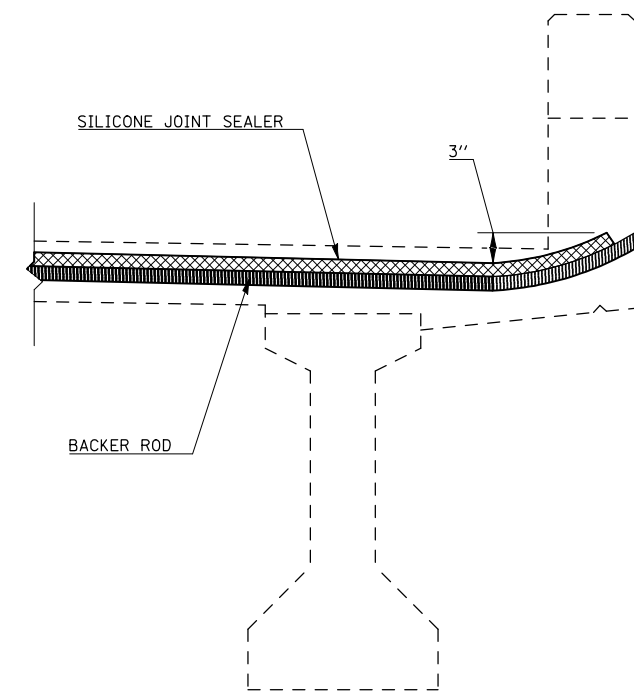
**SECTION AT EXISTING NEOPRENE JOINT
(TO BE REMOVED)**



**SECTION AT PARAPET
POLYMER CONCRETE NOSING**



SECTION AT PROPOSED JOINT



**SECTION AT PARAPET
SILICONE JOINT SEALER**

NOTES

REMOVE EXISTING NEOPRENE EXPANSION JOINT AND REPLACE WITH SILICONE JOINT SEALER AND POLYMER CONCRETE NOSING.

REMOVAL OF THE EXISTING NEOPRENE EXPANSION JOINT SHALL BE INCLUDED IN THE COST OF SILICONE JOINT SEALER AND POLYMER CONCRETE.

BILL OF MATERIALS

ITEM	UNIT	TOTAL
SILICONE JOINT SEALER, 2"	FOOT	90.0
POLYMER CONCRETE	CU FT	14.5

FILE NAME =	USER NAME = s1msgm	DESIGNED - GMS	REVISED -
ct:\pwork\PWIDOT\S1MSGM\d0179794\05708	31-shr-Bridge Repair Plans.dgn	DRAWN - GMS	REVISED -
	PLOT SCALE = 41.6516 ' / IN.	CHECKED -	REVISED -
	PLOT DATE = 2/19/2010	DATE -	REVISED -

**STATE OF ILLINOIS
DEPARTMENT OF TRANSPORTATION**

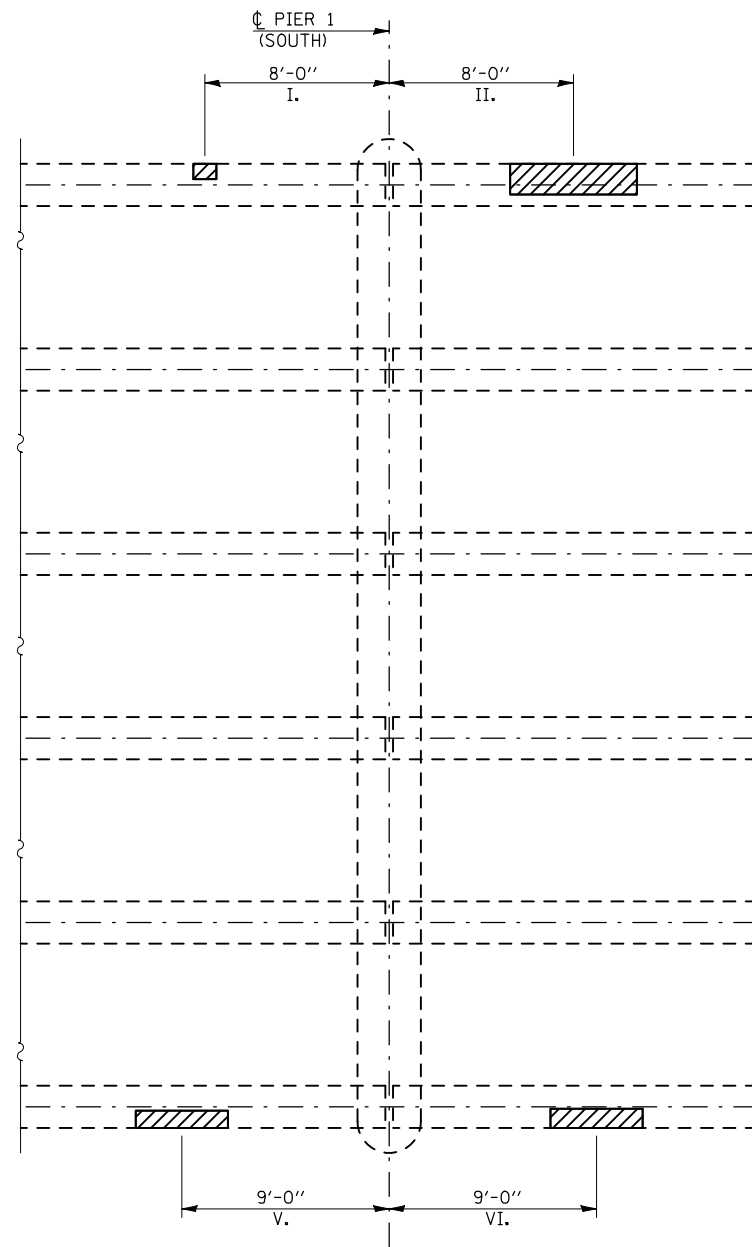
**JOINT REPAIR DETAILS
S.N. 020-0045**

SCALE: _____ SHEET NO. 6 OF 16 SHEETS STA. _____ TO STA. _____

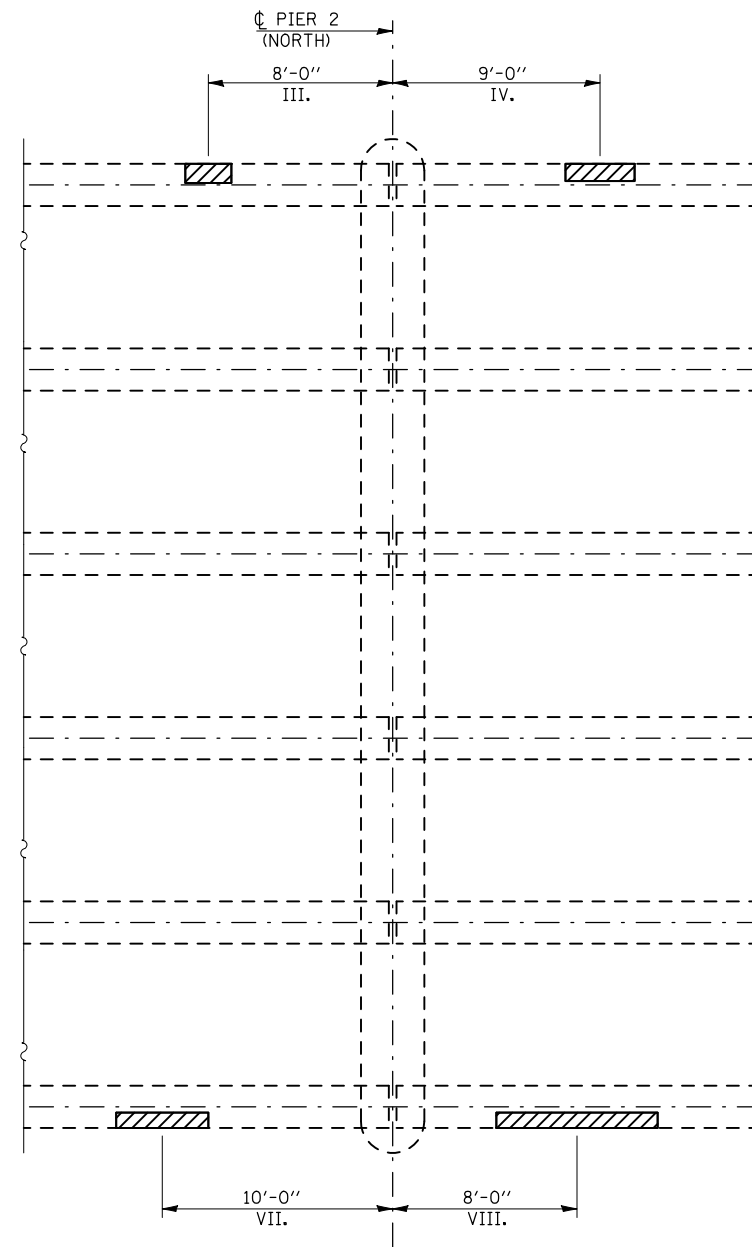
F.A.P. RTE.	SECTION	COUNTY	TOTAL SHEETS	SHEET NO.
760	124 BR-1	DEWITT	23	9
CONTRACT NO. 70531				
ILLINOIS FED. AID PROJECT				

P.P.C. I-BEAM REPAIRS

S.N. 020-0045



PLAN AT PIER 1
(SHOWING LOCATIONS OF P.P.C. I-BEAM REPAIRS)



PLAN AT PIER 2
(SHOWING LOCATIONS OF P.P.C. I-BEAM REPAIRS)

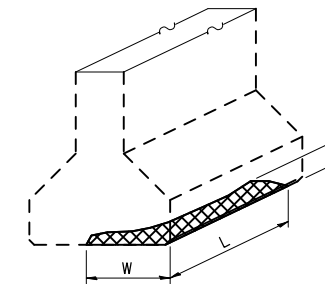
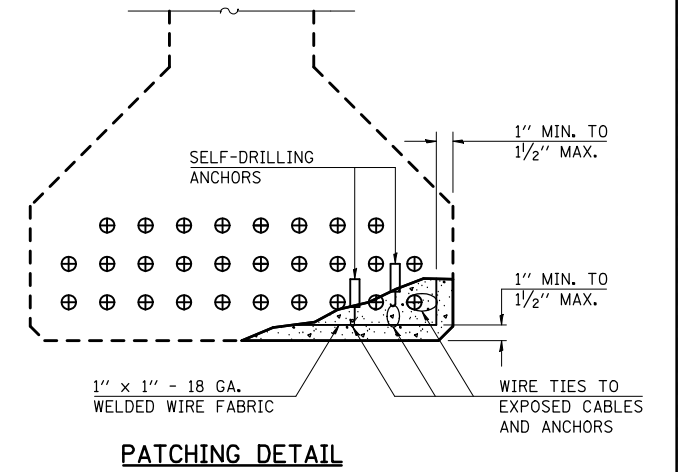
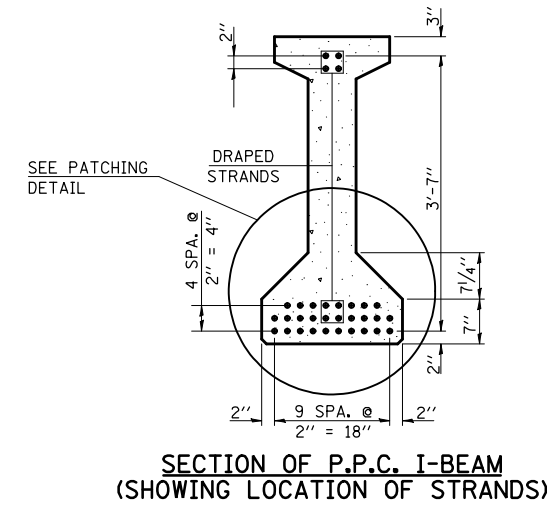


TABLE FOR P.P.C. I-BEAM REPAIRS

REPAIR LOCATION	REPAIR AREA DIMENSIONS			ESTIMATED REPAIR VOLUME (CU FT)
	L	W	H	
I.	1'-0"	8"	2"	0.07
II.	5'-6"	1'-4"	5"	2.04
III.	2'-0"	10"	2"	0.19
IV.	3'-0"	9"	3"	0.38
V.	4'-0"	9"	3"	0.50
VI.	4'-0"	10"	4"	0.74
VII.	4'-0"	8"	3"	0.44
VIII.	7'-0"	8"	2"	0.52

NOTES

THE REPAIR DIMENSIONS AND ESTIMATED QUANTITIES IN THE ABOVE TABLE ARE FOR ESTIMATING PURPOSES ONLY. THIS INFORMATION IS BASED ON AN INSPECTION FROM APRIL OF 2009. ACTUAL QUANTITIES SHALL BE DETERMINED BY THE ENGINEER IN THE FIELD. THIS WORK WILL BE PAID FOR AT THE CONTRACT UNIT PRICE FOR P.P.C. I-BEAM REPAIRS ON A LUMP SUM BASIS. NO ADDITIONAL COMPENSATION WILL BE ALLOWED.

THE REMOVAL OF THE EXISTING CONCRETE AT THE P.P.C. I-BEAM REPAIR LOCATIONS SHALL BE LIMITED TO ALL LOOSE OR DELAMINATED CONCRETE ONLY. THE CONTRACTOR SHALL USE EXTREME CARE DURING THIS REMOVAL PROCESS TO PREVENT ANY DAMAGE TO THE EXISTING PRE-STRESSING STRANDS. SPECIAL ATTENTION SHALL ALSO BE GIVEN WHEN USING SELF-DRILLING ANCHORS IN THE PATCH AREAS. THE ANCHORS SHOULD NOT MAKE CONTACT WITH ANY OF THE PRE-STRESSING STRANDS.

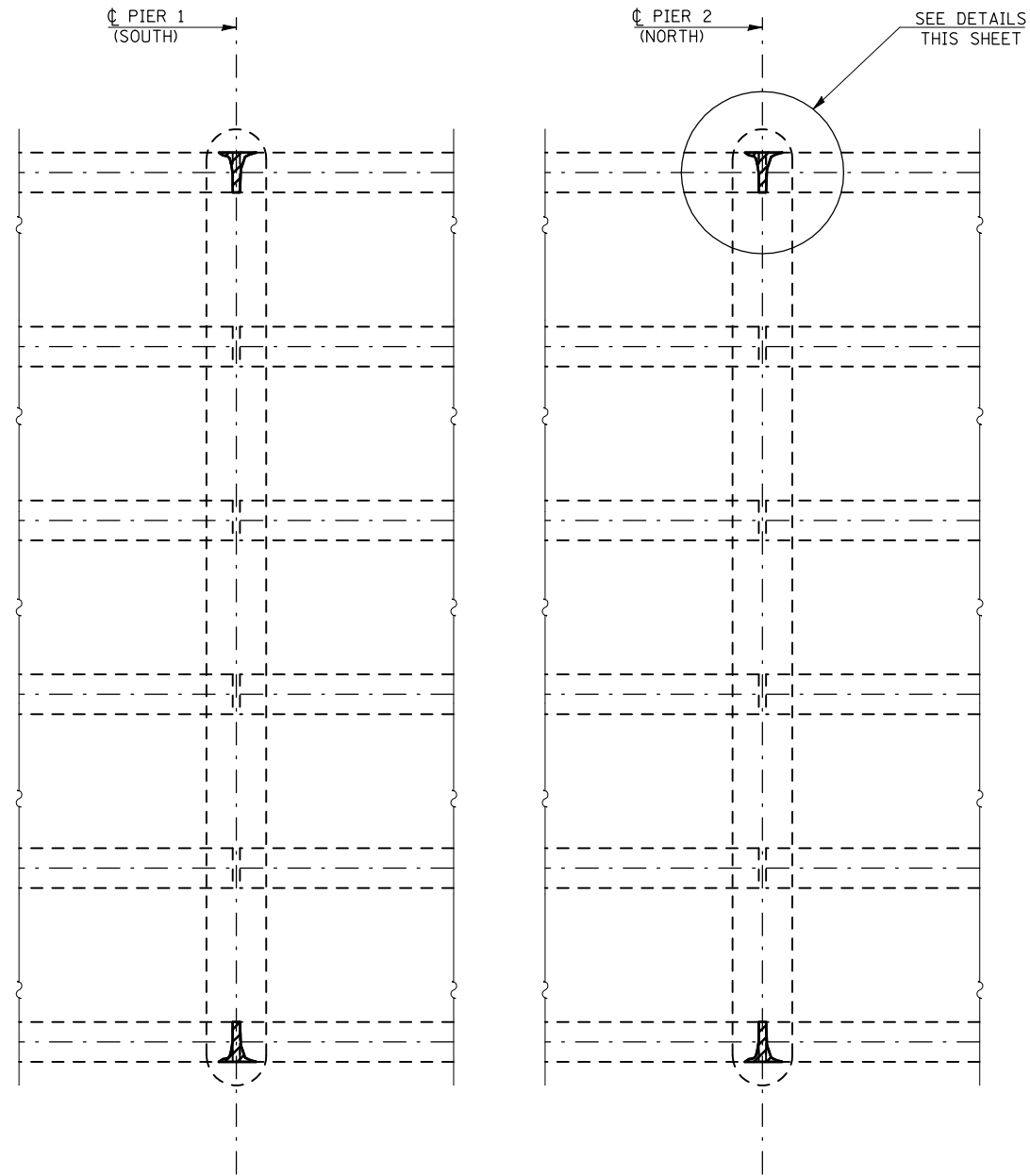
THE CONTRACTOR SHALL USE CLASS PS CONCRETE FOR THE PATCHING OF THE P.P.C. I-BEAMS.

BILL OF MATERIALS

ITEM	UNIT	TOTAL
P.P.C. I-BEAM REPAIRS	L SUM	1.0

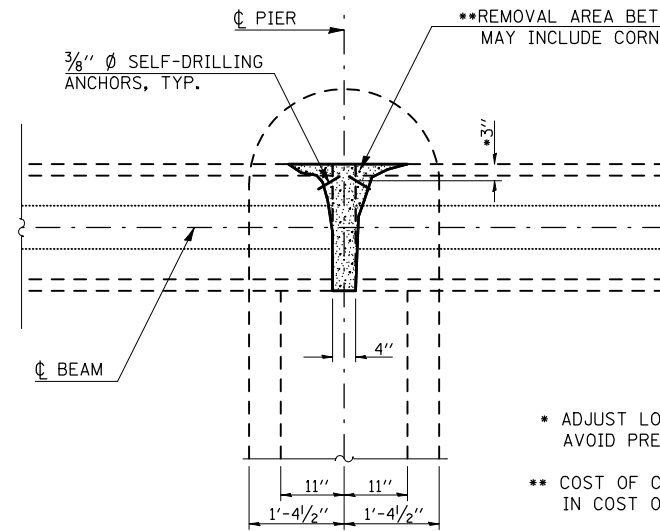
COMPRESSION BLOCK REPAIRS

S.N. 020-0045

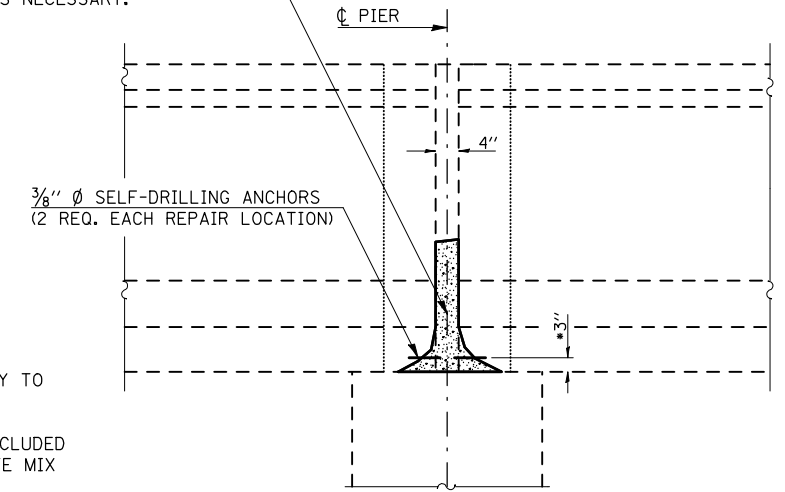


PLAN AT PIER 1
(SHOWING REPAIR LOCATIONS)

PLAN AT PIER 2
(SHOWING REPAIR LOCATIONS)



PLAN
(COMPRESSION BLOCK REPAIR)



ELEVATION
(COMPRESSION BLOCK REPAIR)

- ADJUST LOCATION AS NECESSARY TO AVOID PRESTRESSING STRANDS
- COST OF CONCRETE REMOVAL INCLUDED IN COST OF PUMPABLE CONCRETE MIX

NOTES

THE REMOVAL OF THE EXISTING CONCRETE AT THE COMPRESSION BLOCK REPAIR LOCATIONS SHALL BE LIMITED TO ALL LOOSE OR DELAMINATED CONCRETE ONLY. THE CONTRACTOR SHALL USE EXTREME CARE DURING THIS REMOVAL PROCESS TO PREVENT ANY DAMAGE TO THE EXISTING PRE-STRESSING STRANDS. SPECIAL ATTENTION SHALL ALSO BE GIVEN WHEN USING SELF-DRILLING ANCHORS IN THE PATCH AREAS. THE ANCHORS SHOULD NOT MAKE CONTACT WITH ANY OF THE PRE-STRESSING STRANDS.

THE CONTRACTOR SHALL USE A PUMPABLE CONCRETE MIX FOR THE REPAIR. SEE SPECIAL PROVISION FOR PUMPABLE CONCRETE MIX FOR MIX REQUIREMENTS. COSTS FOR ALL WORK AND MATERIALS NECESSARY TO COMPLETE THE REPAIRS AS SHOWN ON THIS SHEET SHALL BE INCLUDED IN COST OF PUMPABLE CONCRETE MIX.

BILL OF MATERIALS

ITEM	UNIT	TOTAL
PUMPABLE CONCRETE MIX	CU FT	3.0

FILE NAME =	USER NAME = smsgm	DESIGNED - GMS	REVISED - ---
c:\pwork\PWIDOT\SMSGM\d0179794\05708	31-sht-Bridge Repair Plans.dgn	DRAWN - GMS	REVISED - ---
	PLOT SCALE = 41.6516 ' / IN.	CHECKED - ---	REVISED - ---
	PLOT DATE = 2/19/2010	DATE - ---	REVISED - ---

STATE OF ILLINOIS
DEPARTMENT OF TRANSPORTATION

COMPRESSION BLOCK REPAIRS
S.N. 020-0045

SCALE: _____ SHEET NO. 8 OF 16 SHEETS STA. _____ TO STA. _____

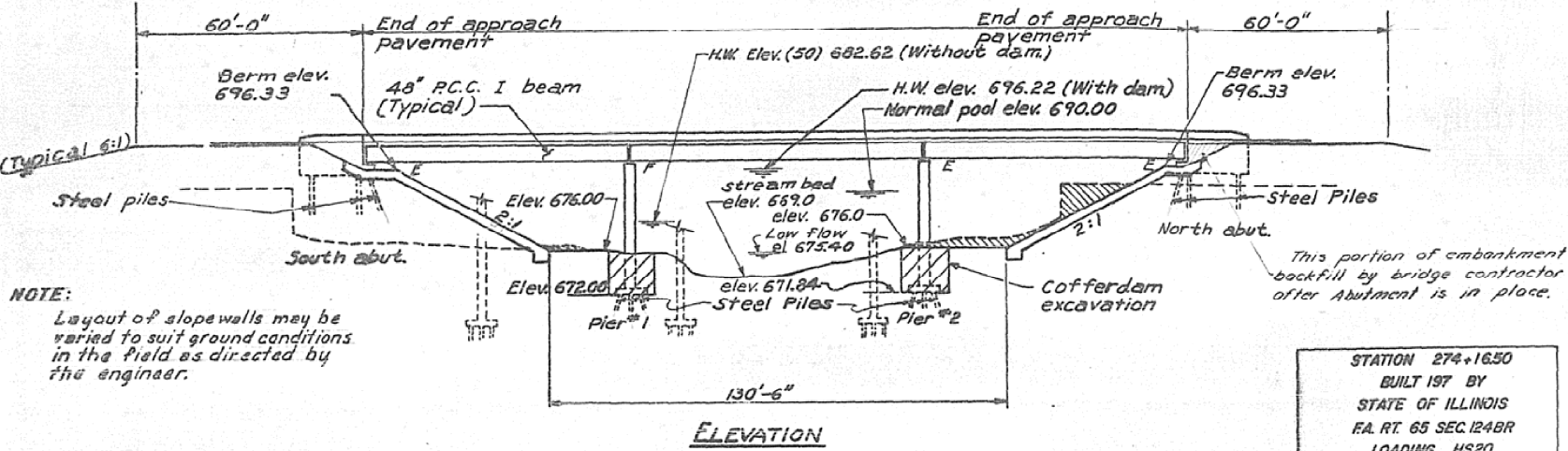
F.A.P. RTE.	SECTION	COUNTY	TOTAL SHEETS	SHEET NO.
760	124 BR-1	DEWITT	23	11
CONTRACT NO. 70531				
FED. ROAD DIST. NO. - ILLINOIS FED. AID PROJECT				

AS-BUILT PLANS FOR INFORMATION ONLY

ROUTE NO.	SECTION	COUNTY	TOTAL SHEETS	SHEET NO.
65	124BR	Dewitt	32	10
FED. ROAD DIST. NO. 7 ILLINOIS				15 SHEETS

BENCH MARK
Spike in power pole
53.4 FT. right station 256+68
Elevation 732.99
Traffic to be maintained
over a temporary bridge

GENERAL NOTES
See special provisions for borings.
All reinforcement bars shall be lapped 24 diameters unless otherwise shown.
The basic lead silico chromate paint system shall be used for shop painting (two coats) of structural steel.
The contractor shall drive two steel test piles in permanent locations, one at the south abutment and one at pier #2 as directed by the engineer before ordering the remainder of piles.
The embankment configuration shown is the minimum embankment that must be constructed prior to construction of the abutments.
The concrete rail section above the mandatory construction joint at the top of the slab shall be constructed of class x-concrete, except the aggregates shall conform to the requirements of handrail concrete.
Protective coat shall not be applied to surfaces to which waterproofing membrane system is applied.



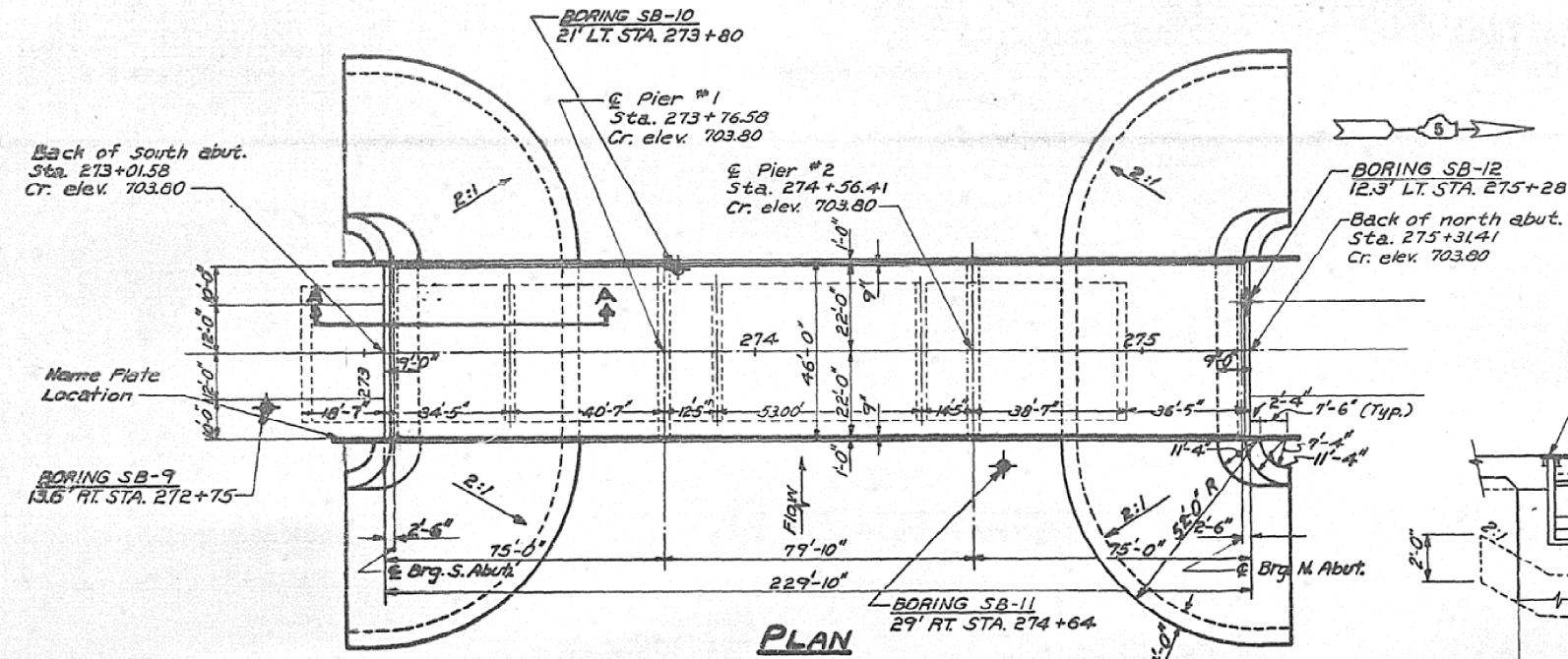
NOTE:
Layout of slope walls may be varied to suit ground conditions in the field as directed by the engineer.

STATION 274+16.50
BUILT 197 BY
STATE OF ILLINOIS
F.A. RT. 65 SEC. 124BR
LOADING HS20
NAME PLATE
See Standard 2113

TOTAL BILL OF MATERIAL

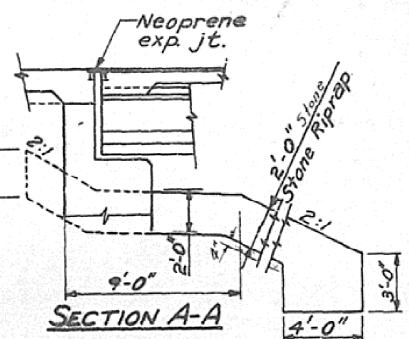
ITEM	UNIT	SUPER	SUB	TOTAL
Brit. conc. surf. course, mixture D class I	Tons	92.3		92.3
Waterproofing Membrane System	Sq. Yds.	4,070		4,070
Removal of Existing Structures	Each	0.5	0.5	1
Cofferdam Excavation	Cu. Yds.		300	300
Class X-Concrete	Cu. Yds.	355.1	106.6	461.7
Class A Concrete	Cu. Yds.		340.8	340.8
Reinforcement Bars	Lbs.	79,705	23,070	102,775
Protective Coat	Sq. Yds.	211		211
Furnishing & Erecting PPCI Beams, 48"	Lin. Ft.	1,353		1,353
Steel Piles HP8x36	Lin. Ft.		2020	2020
Test Piles Steel HP8x36	Each		2	2
Name Plates	Each	1		1
Stone Riprap	Sq. Yds.		2,560	2,560
Neoprene Exp. Joint (2")	Lin. Ft.	90		90
Drainage Scuppers	Each	18		18
Cofferdams	Each		2	2

* For Waterproofing Membrane System
See Special Provisions



WATERWAY INFORMATION

Drainage Area	142.7 sq. mi.
Character	Rolling, Cultivated
Reg'd. Opening	3,710 sq. ft. (below 696.22)
Prop. Opening	3,715 sq. ft. (below 696.22)
O(50) Without Dam	13,500 c.f.s.
H.W.L. (50) Without Dam	686.10
O(50) With Dam, 30 th Hr.	5,658 c.f.s.
H.W.L. (50) With Dam, 30 th Hr.	696.22
O(50) With Dam, 14 th Hr.	10,359 c.f.s.
H.W.L. (50) With Dam, 14 th Hr.	693.88
O(100) With Dam, 30 th Hr.	6,361 c.f.s.
H.W.L. (100) With Dam, 30 th Hr.	696.83
O(100) With Dam, 14 th Hr.	11,792 c.f.s.
H.W.L. (100) With Dam, 14 th Hr.	596.28



DESIGN STRESSES

FIELD UNITS	PRECAST PRESTR. UNITS
$f_c = 1,200$ p.s.i. deck slab	$f_c = 4,000$ p.s.i.
$f_c = 1,400$ p.s.i. curb parap. sub.	$f_c = 5,000$ p.s.i.
$f_s = 20,000$ p.s.i. reinf.	$f_s = 270,000$ p.s.i. ($1/2$ " strands)
$f_s = 20,000$ p.s.i. struct.	$f_s = 180,700$ p.s.i. ($1/2$ " strands)
$v_c = 75$ p.s.i. footing	Design specifications 1973 AASHTO (as applicable)
$n = 10$	

Loading: HS 20-44

APPROVED
FOR STRUCTURAL DESIGN ONLY
[Signature]
STATE OF ILLINOIS
DEPARTMENT OF TRANSPORTATION

**GENERAL PLAN AND ELEVATION
F.A. ROUTE 65 OVER SALT CREEK
F.A. ROUTE 65 SECTION 124 BR
DE WITT COUNTY
STATION 274+16.50**

SARGENT & LUNDY

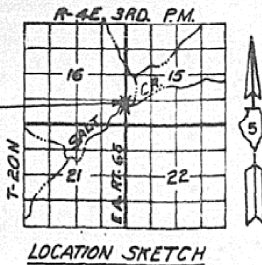
ENGINEERS
CHICAGO

WARREN & VAN PRAAG, INC.

CONSULTING ENGINEERS - ARCHITECTS

DECATUR ILLINOIS ST. LOUIS MISSOURI CHICAGO ILLINOIS DAYTONPORT OHIO

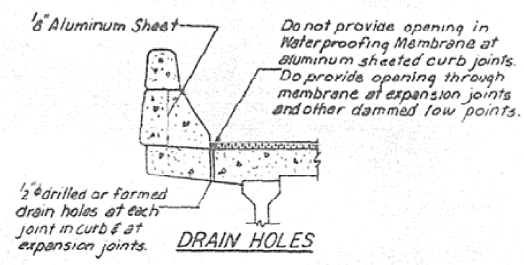
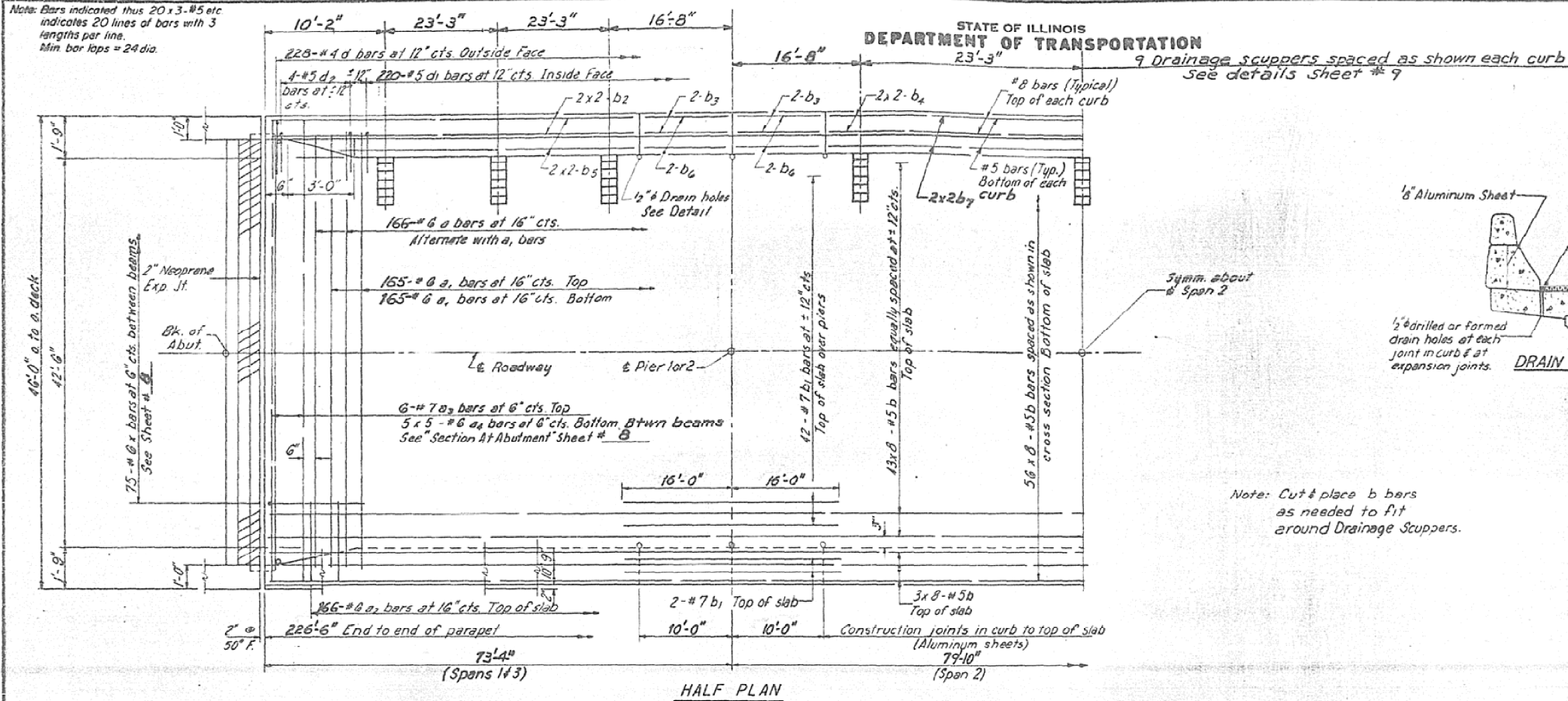
DESIGNED P. MEHOOD	DRAWN - GMS	REVISED -	REVISED -
CHECKED P. MATONE	CHECKED -	REVISED -	REVISED -
DRAWN P. CUNNINGHAM	DATE -	REVISED -	REVISED -
CHECKED P. MEHOOD		REVISED -	REVISED -



AS-BUILT PLANS FOR INFORMATION ONLY

Note: Bars indicated thus 20 x 3-#5 etc indicates 20 lines of bars with 3 lengths per line.
Min. bar laps = 24 dia.

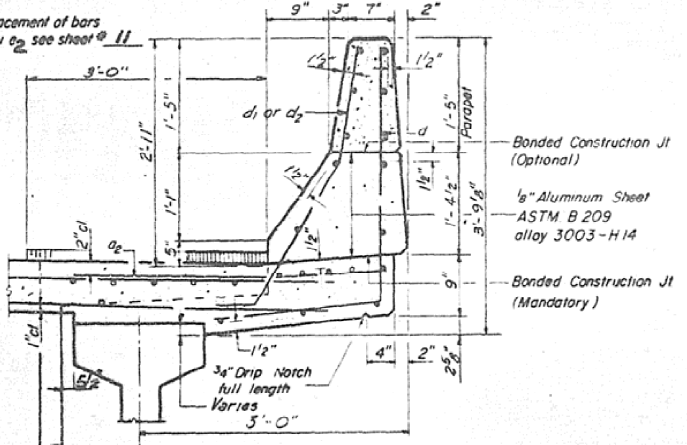
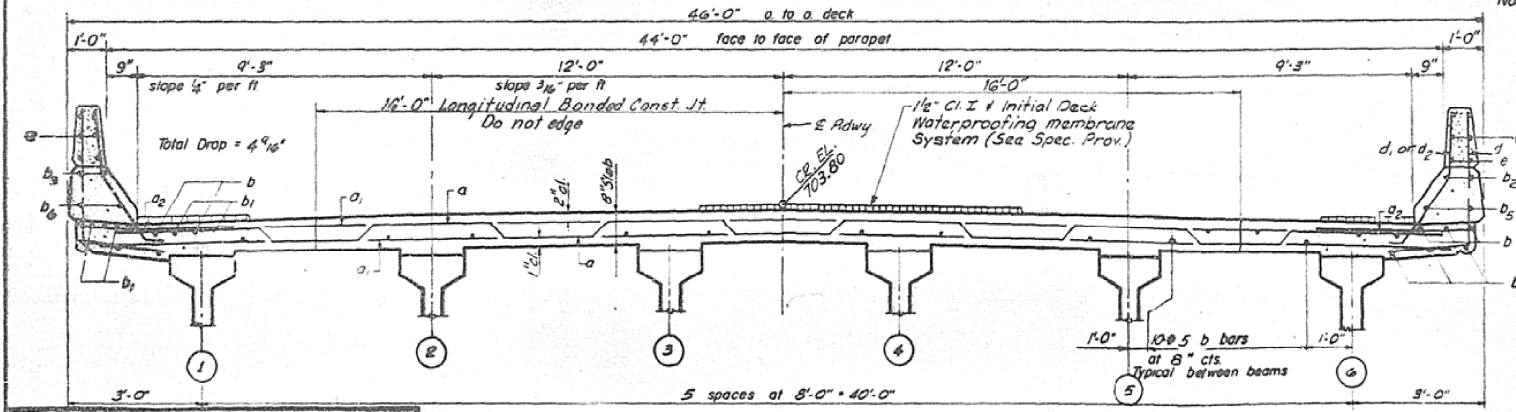
SECTION	COUNTY	TOTAL SHEETS	SHEET NO.
124 BR-1	Dewitt	32	13
SHEET NO. 4		15 SHEETS	



Note: Cut & place b bars as needed to fit around Drainage Scuppers.

BILL OF MATERIAL

Bar	No	Size	Length	Shape
a	166	#6	45'-8"	—
a ₁	330	#6	44'-0"	—
a ₂	332	#6	4'-0"	—
a ₃	12	#7	45'-4"	—
a ₄	50	#6	7'-1"	—
b	840	#5	29'-6"	—
b ₁	92	#7	32'-0"	—
b ₂	10	#8	32'-8"	—
b ₃	10	#8	9'-9"	—
b ₄	8	#8	31'-0"	—
b ₅	16	#5	32'-3"	—
b ₆	16	#5	9'-9"	—
b ₇	8	#5	30'-6"	—
d	456	#4	5'-1"	J
d ₁	440	#5	4'-0"	J
d ₂	18	#5	4'-3"	J
m	40	#4	7'-1"	—
m ₁	20	#6	5'-11"	—
s	60	#4	11'-8"	J
x	150	#6	8'-1"	C
Reinforcement Bars			Lbs	73,920
Class X Concrete			Cu Yds	302.8

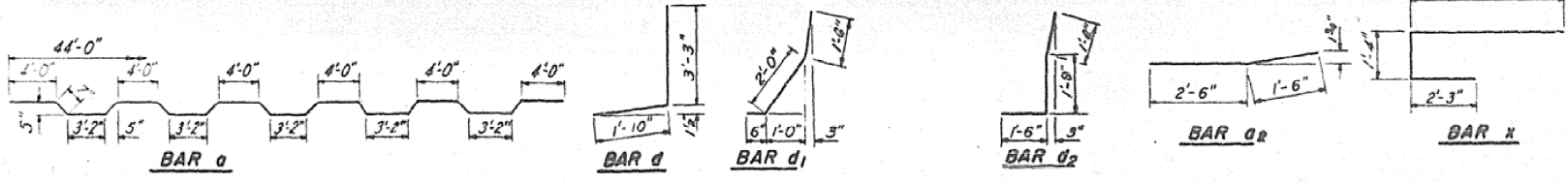


Parapet Reinforcement and Class X Concrete are billed on sheet # 11.
For placement and details of bars m, n₁, and s see sheet # 8.

WARREN & VAN PRAAG, INC.
CONSULTING ENGINEERS - ARCHITECTS

DESIGNED **P. McHOOD**
CHECKED **P. MATONE**
DRAWN **R. CUNNINGHAM**
CHECKED **P. McHOOD**

PI-1 9-15-72

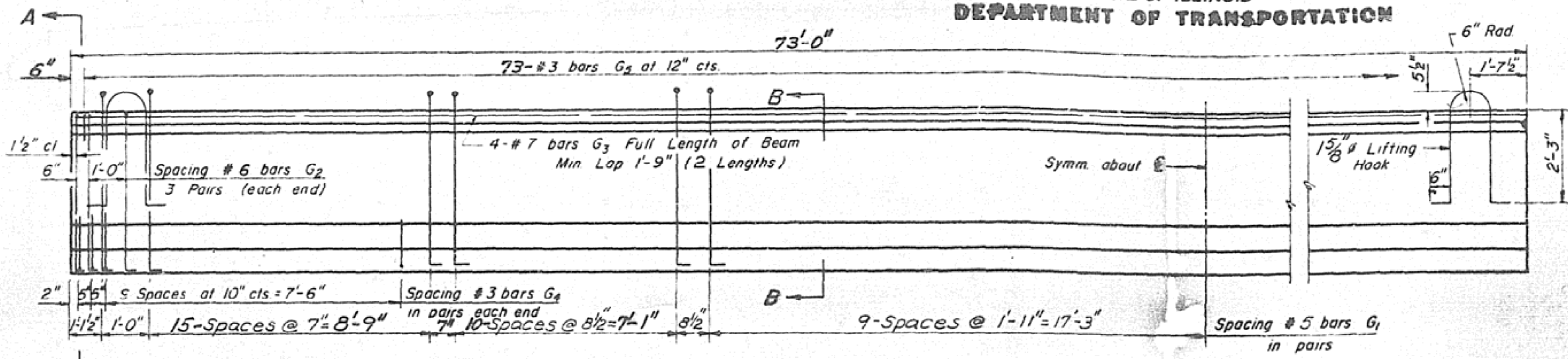


SUPERSTRUCTURE DETAILS
F.A. RT. 65 SECTION 124 BR.
DEWITT COUNTY
STATION 274 + 16.50

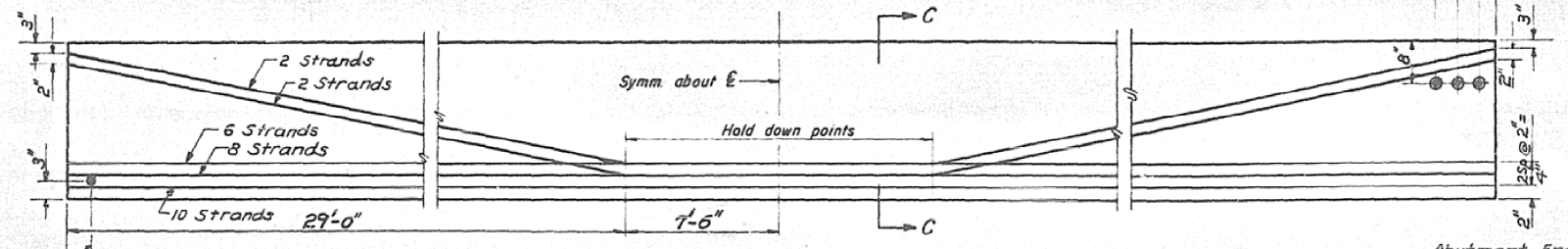
AS-BUILT PLANS FOR INFORMATION ONLY

STATE OF ILLINOIS
DEPARTMENT OF TRANSPORTATION

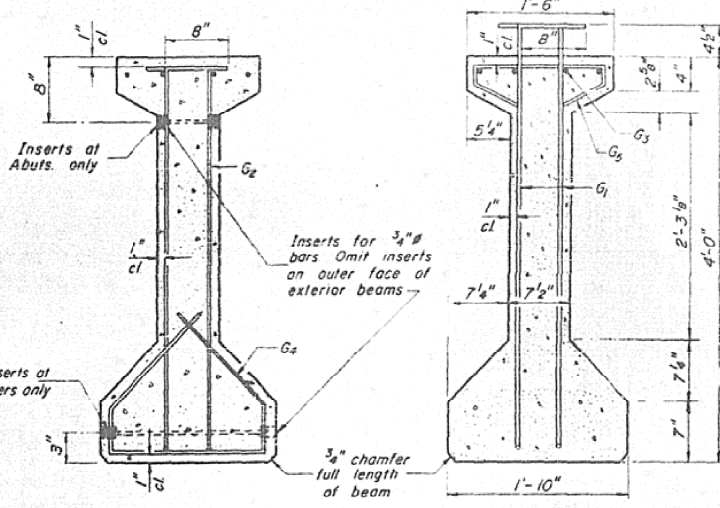
ROUTE NO.	SECTION	COUNTY	TOTAL SHEETS	SHEET NO.
65	124 BR	DEWITT	32	14
SHEET NO. 5				15 SHEETS



ELEVATION OF BEAMS-SPANS 1 & 3
Showing Reinforcement & Dimensions

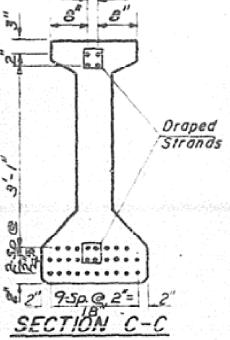


ELEVATION OF BEAMS-SPANS 1 & 3
Showing Prestressing Steel

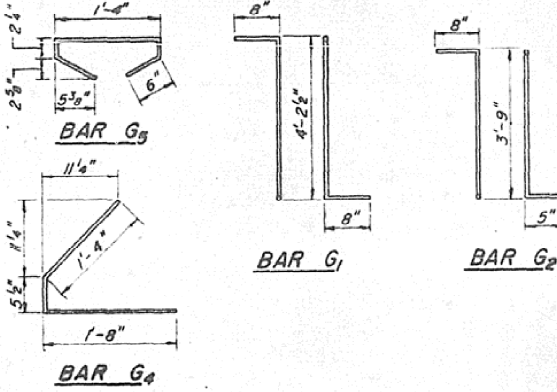


SECTION A-A

SECTION B-B



SECTION C-C



***BAR LIST**

Bar	No	Size	Length	Shape
G ₁	150	#5	5'-6 1/2"	TL
G ₂	12	#6	4'-10"	TL
G ₃	8	#7	37'-4"	—
G ₄	4-8	#3	3'-5 1/2"	L
G ₅	7-3	#3	2'-8 1/2"	○

*For one beam only

BILL OF MATERIAL

Item	Unit	Total
Furnishing & Erecting Precast Prestressed Concrete I-Beams, 48"	Lin Ft	876

NOTES

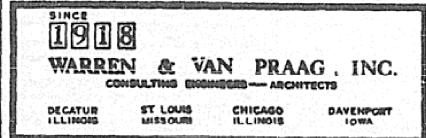
All inserts and threaded rods for inserts, reinforcing and Prestressing Steel, and other items which are cast into the Precast Concrete I-Beams shall be included in the contract unit price per lineal foot of "Furnishing And Erecting Precast Prestressed Concrete I-Beams, 48 In"

Prestressing Steel shall have a nominal diameter of 1/2".
Inserts for 3/8" threaded rods are to be two strut, coil type for interior I-Beams and single coil, flared for type for exterior I-Beams.
Steel for lifting hooks shall be non-deformed bars fy = 40,000 psi.

BEAMS SPANS 1 & 3
F.A. RT. 65 SECTION 124 BR.
DEWITT COUNTY
STA. 274 +16.50



DESIGNED **P. M. HOOD**
CHECKED **R. MATONE**
DRAWN **R. CUNNINGHAM**
CHECKED **P. M. HOOD**



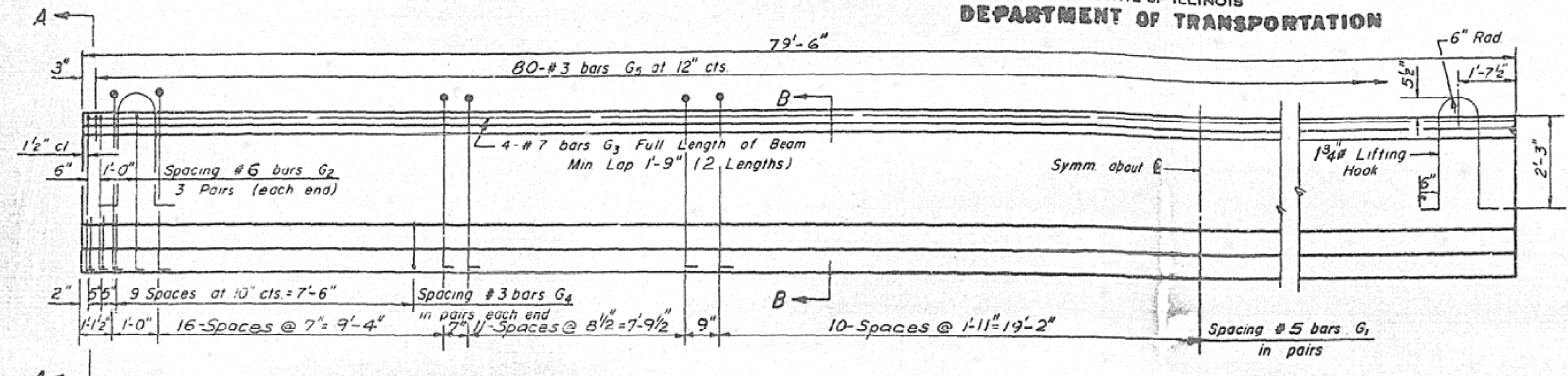
PI-4-48 9-15-72

FILE NAME =	USER NAME =	DESIGNED -	REVISED -	STATE OF ILLINOIS DEPARTMENT OF TRANSPORTATION	AS-BUILT PLANS FOR INFORMATION ONLY	F.A.P. RTE.	SECTION	COUNTY	TOTAL SHEETS	SHEET NO.
ct:\pwork\pwwid\SIMSGM\d8179794\05705	31-shr-Bridge Repair Plans.dgn	DRAWN -	REVISED -			760	124 BR-1	DEWITT	23	14
PLOT SCALE = 41.6516 1/1 IN.		CHECKED -	REVISED -			CONTRACT NO. 70531				
PLOT DATE = 2/19/2010		DATE -	REVISED -			SCALE: _____	SHEET NO. 11 OF 16 SHEETS	STA. _____ TO STA. _____	FED. ROAD DIST. NO. _____	ILLINOIS FED. AID PROJECT

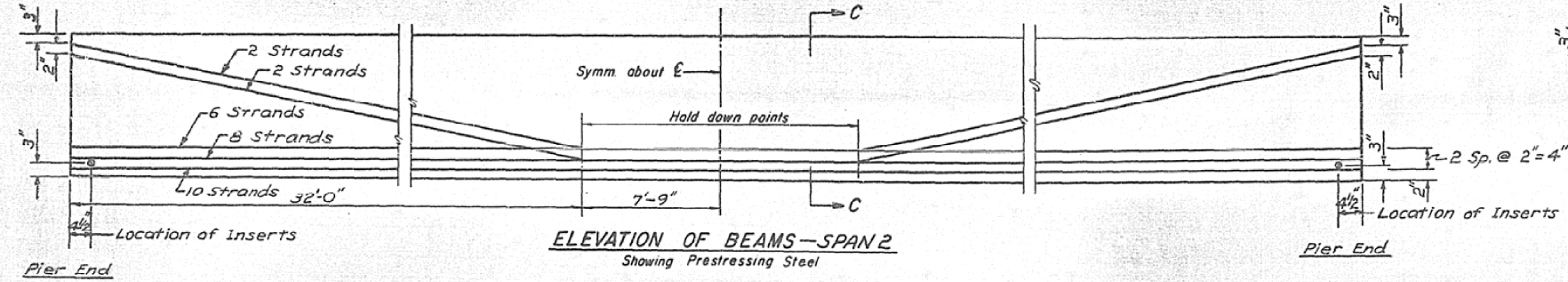
AS-BUILT PLANS FOR INFORMATION ONLY

STATE OF ILLINOIS
DEPARTMENT OF TRANSPORTATION

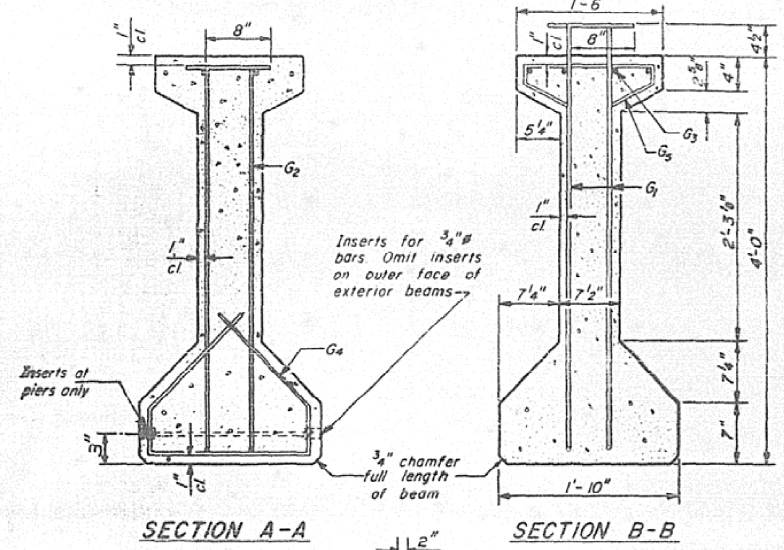
ROUTE NO.	SECTION	COUNTY	TOTAL SHEETS	SHEET NO.
65	124 BR	Dewitt	32	15
SHEET NO. 6				
15 SHEETS				



ELEVATION OF BEAMS—SPAN 2
Showing Reinforcement & Dimensions

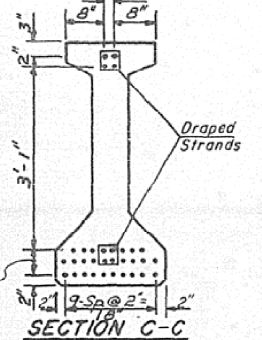


ELEVATION OF BEAMS—SPAN 2
Showing Prestressing Steel

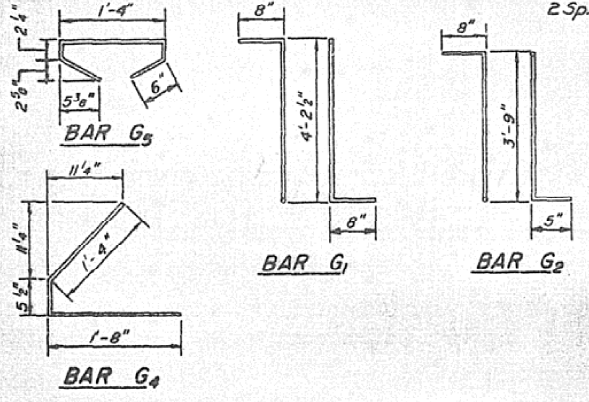


SECTION A-A

SECTION B-B



SECTION C-C



***BAR LIST**

Bar	No	Size	Length	Shape
G ₁	162	#5	5'-6 1/2"	7L
G ₂	12	#6	4'-10"	7L
G ₃	8	#7	40'-6"	—
G ₄	48	#3	3'-5 1/2"	L
G ₅	80	#3	2'-8 1/2"	□

*For one beam only.

BILL OF MATERIAL

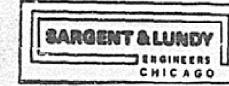
Item	Unit	Total
Furnishing & Erecting Precast Prestressed Concrete I-Beams, 48"	Lin Ft	477

NOTES

All inserts and threaded rods for inserts, reinforcing and Prestressing Steel, and other items which are cast into the Precast Concrete I-Beams shall be included in the contract unit price per lineal foot of "Furnishing And Erecting Precast Prestressed Concrete I-Beams, 48 in."

Prestressing Steel shall have a nominal diameter of 1/2". Inserts for 3/8" threaded rods are to be two strut, coil type for interior I-Beams and single coil, flared loc. type for exterior I-Beams. Steel for lifting hooks shall be non-deformed bars $f_y = 40,000$ psi.

BEAMS SPAN 2
F.A. RT. 65 SECTION 124 BR.
DEWITT COUNTY
STA. 274 + 16.50



DESIGNED **P. McHOOD**
CHECKED **P. MATONE**
DRAWN **P. CUNNINGHAM**
CHECKED **P. McHOOD**

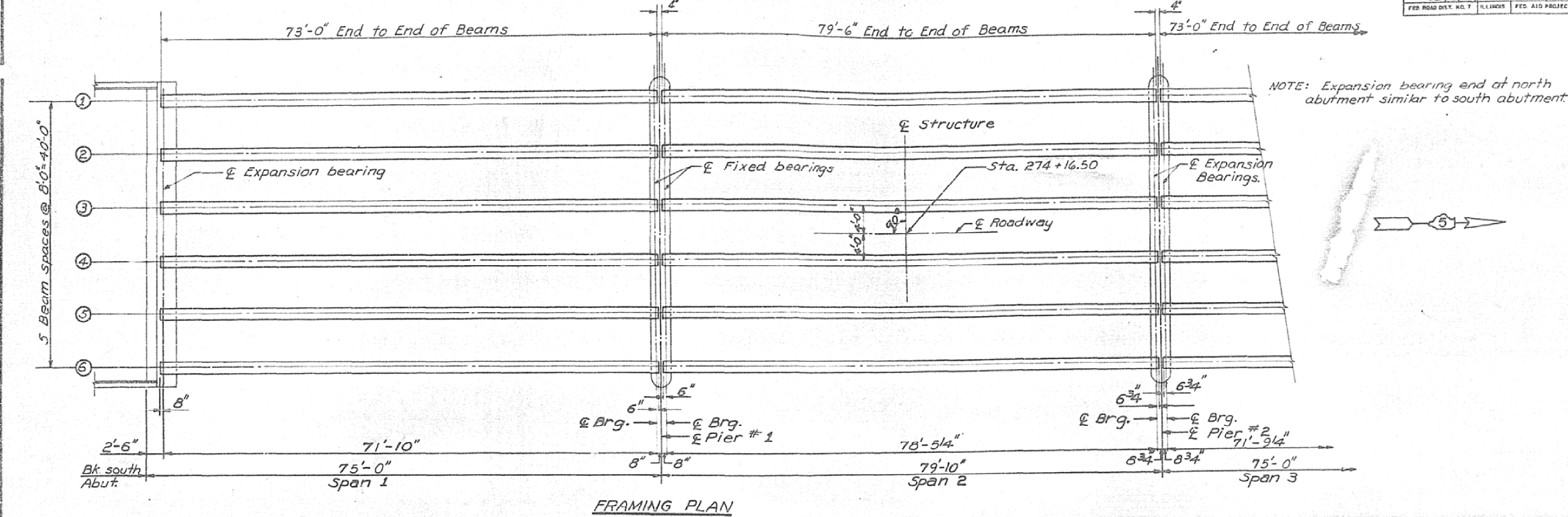
SINCE 1918
WARREN & VAN PRAAG, INC.
CONSULTING ENGINEERS—ARCHITECTS
DECATUR ILLINOIS ST. LOUIS MISSOURI CHICAGO ILLINOIS DAVENPORT IOWA

PI-4-48 9-15-72

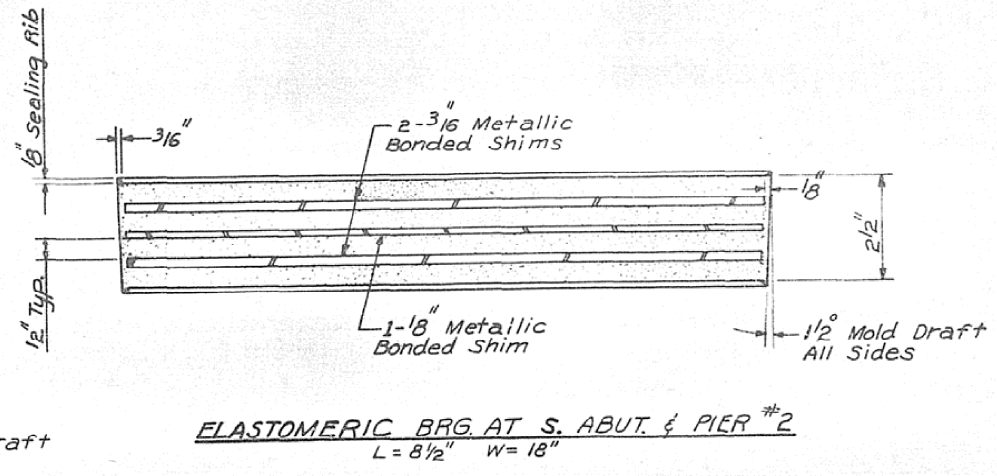
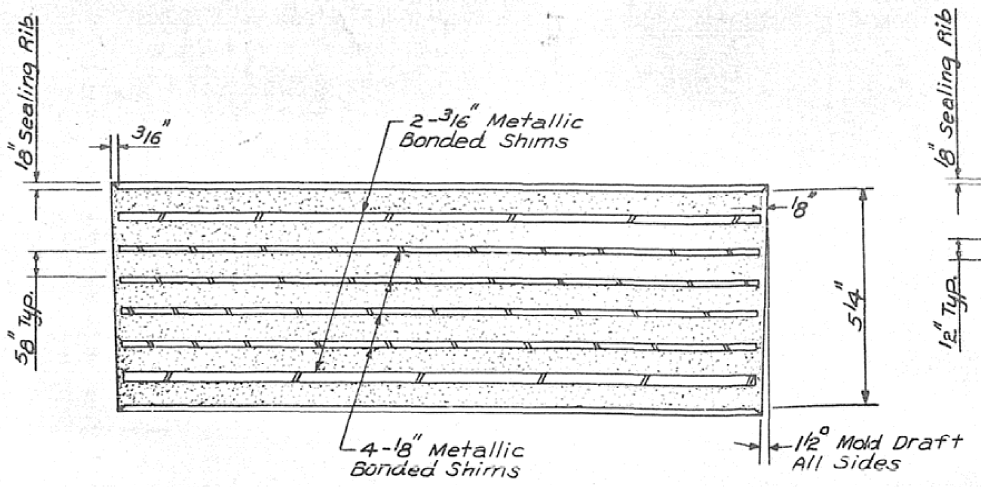
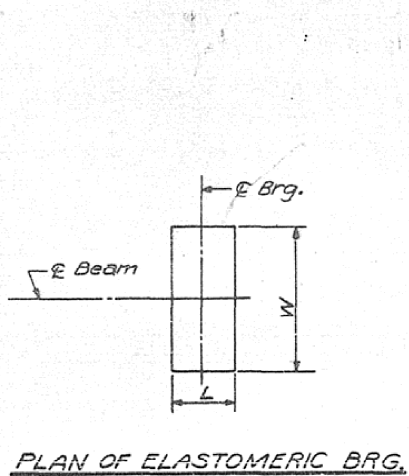
FILE NAME =	USER NAME =	DESIGNED -	REVISED -	STATE OF ILLINOIS DEPARTMENT OF TRANSPORTATION	AS-BUILT PLANS FOR INFORMATION ONLY	F.A.P. RTE.	SECTION	COUNTY	TOTAL SHEETS	SHEET NO.
ct:\pwork\pwwdt\simsgm\d8179794\05708	31-shr-Br-idge Repair Plans.dgn	DRAWN -	REVISED -			760	124 BR-1	DEWITT	23	15
PLOT SCALE = 41.6516 1/1 IN.	CHECKED -	REVISED -	REVISED -			CONTRACT NO. 70531				
PLOT DATE = 2/19/2010	DATE -	REVISED -	REVISED -			FED. ROAD DIST. NO. - ILLINOIS/FED. AID PROJECT				

AS-BUILT PLANS FOR INFORMATION ONLY

ROUTE NO.	SECTION	COUNTY	TOTAL SHEETS	SHEET NO.	SHEET NO. 7 15 SHEETS
S.S.I.	F.A. 65124 BR	Dewitt	32	16	
FED. ROAD DIST. NO. 7	ILLINOIS	FED. AID PROJECT-			



NOTE: Expansion bearing end at north abutment similar to south abutment.



NOTE: Cost of Elastomeric Brgs. is incidental.

BARGENT & LUNDY
ENGINEERS
CHICAGO

DESIGNED P. M^{SE} HOOD
CHECKED P. MATONE
DRAWN R. CUNNINGHAM
CHECKED P. M^{SE} HOOD

SINCE 1918
WARREN & VAN PRAAG, INC.
CONSULTING ENGINEERS - ARCHITECTS

DECATUR ILLINOIS ST. LOUIS MISSOURI CHICAGO ILLINOIS DAVENPORT IOWA

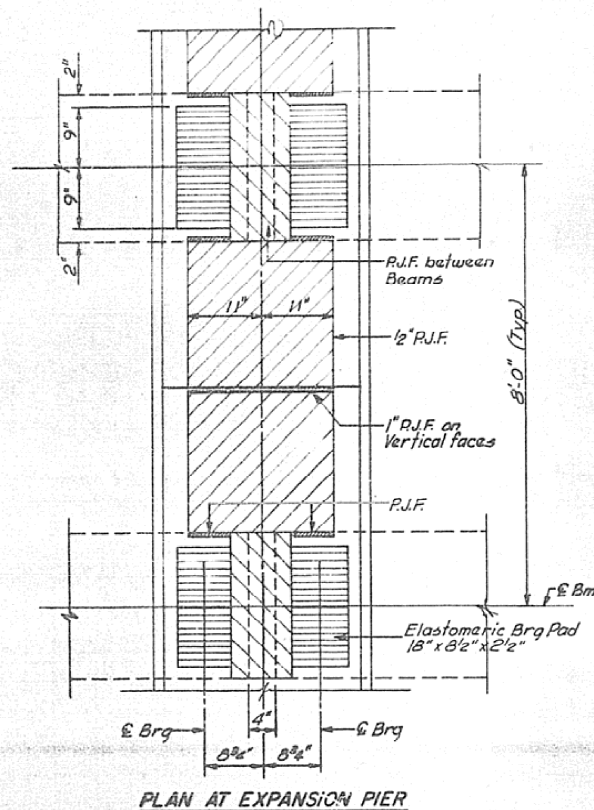
**FRAMING PLAN &
BEARING DETAILS**
F.A. ROUTE 65, SECTION 124 BR.
DEWITT COUNTY
STATION 274+16.50

FILE NAME =	USER NAME = smsgm	DESIGNED - GMS	REVISED - ---	STATE OF ILLINOIS DEPARTMENT OF TRANSPORTATION	AS-BUILT PLANS FOR INFORMATION ONLY	F.A.P. RTE. 760	SECTION 124 BR-1	COUNTY DEWITT	TOTAL SHEETS 23	SHEET NO. 16		
ct:\pwork\VPWDDT\SIMSGM\d8179794\05705	31-sht-Bridge Repair Plans.dgn	DRAWN - GMS	REVISED - ---			SCALE: _____	SHEET NO. 13 OF 16 SHEETS	STA. _____	TO STA. _____	CONTRACT NO. 70531		
	PLOT SCALE = 41.6516' / IN.	CHECKED - ---	REVISED - ---			FED. ROAD DIST. NO. - ILLINOIS / FED. AID PROJECT						
	PLOT DATE = 2/19/2010	DATE - -----	REVISED - ---									

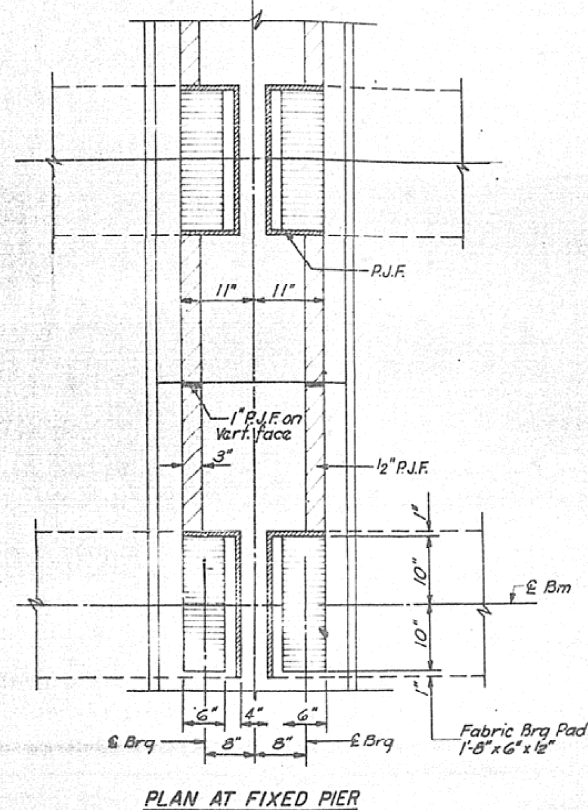
AS-BUILT PLANS FOR INFORMATION ONLY

STATE OF ILLINOIS
DEPARTMENT OF TRANSPORTATION

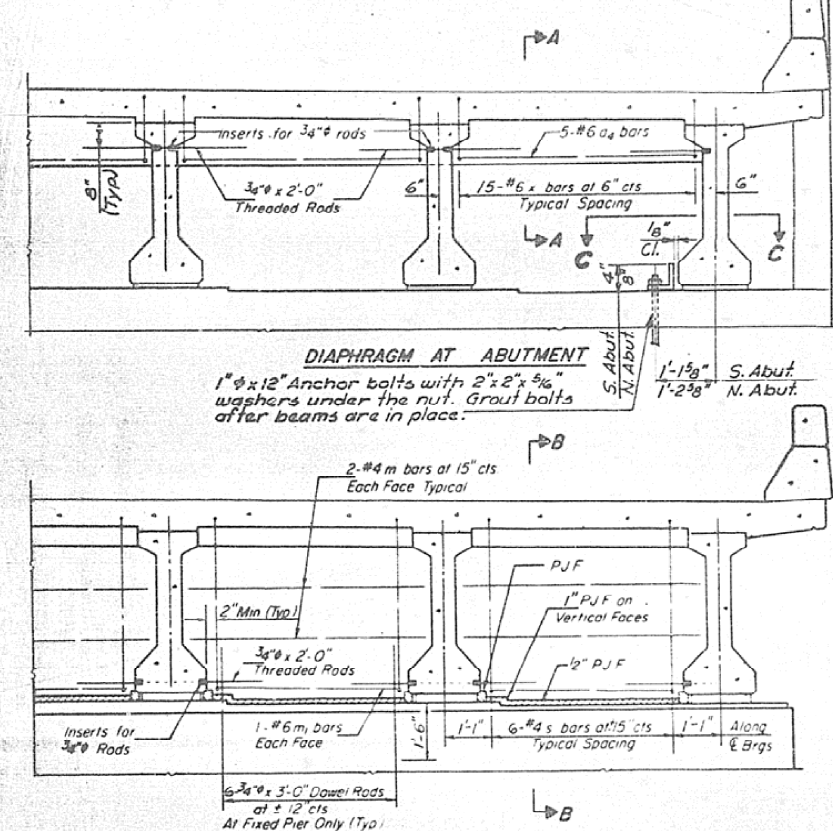
ROUTE NO.	SECTION	COUNTY	TOTAL SHEETS	SHEET NO.
65	124 BR	Dewitt	32	17
SHEET NO. 8 15 SHEETS				



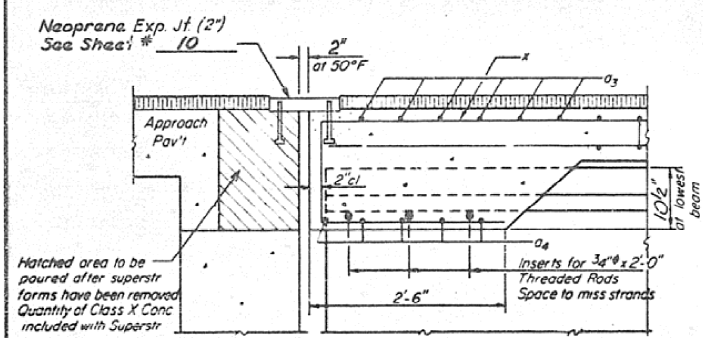
PLAN AT EXPANSION PIER



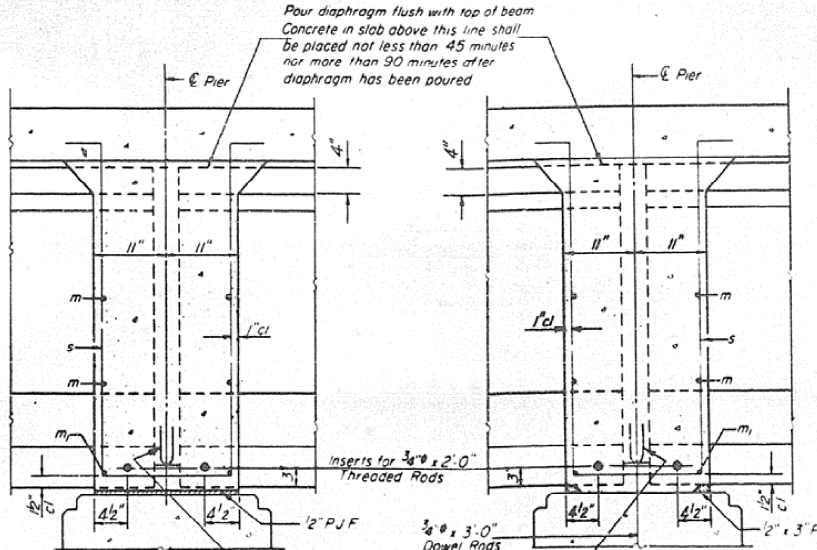
PLAN AT FIXED PIER



DIAPHRAGM AT PIERS

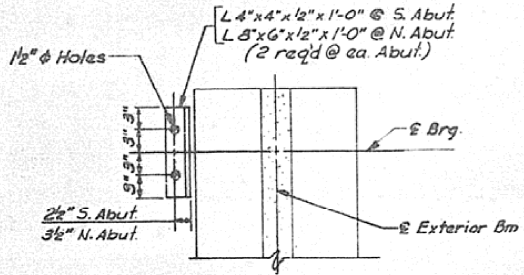


SECTION A-A
AT ABUTMENTS
(at R. Ls)

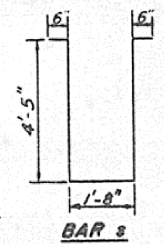


SECTION B-B
AT PIER 2
(Expansion)

SECTION B-B
AT PIER 1
(Fixed)



SECTION C-C
(Cost of Angles & Anchor Bolts
shall be incidental to Contract)



NOTE: Reinforcement bars shown on this sheet are included in Bill of Material on Sheet # 4

DIAPHRAGM DETAILS
FA. RT. 65 SEC. 124 BR.
DEWITT COUNTY
STA. 274 + 16.50

BARGENT & LUNDY
ENGINEERS
CHICAGO

DESIGNED **P. M. HOOD**
CHECKED **P. MATONE**
DRAWN **R. TAYLOR**
CHECKED **P. M. HOOD**

SINCE
1918
WARREN & VAN PRAAG, INC.
CONSULTING ENGINEERS - ARCHITECTS

DECATUR ILLINOIS ST. LOUIS MISSOURI CHICAGO ILLINOIS DAVENPORT IOWA

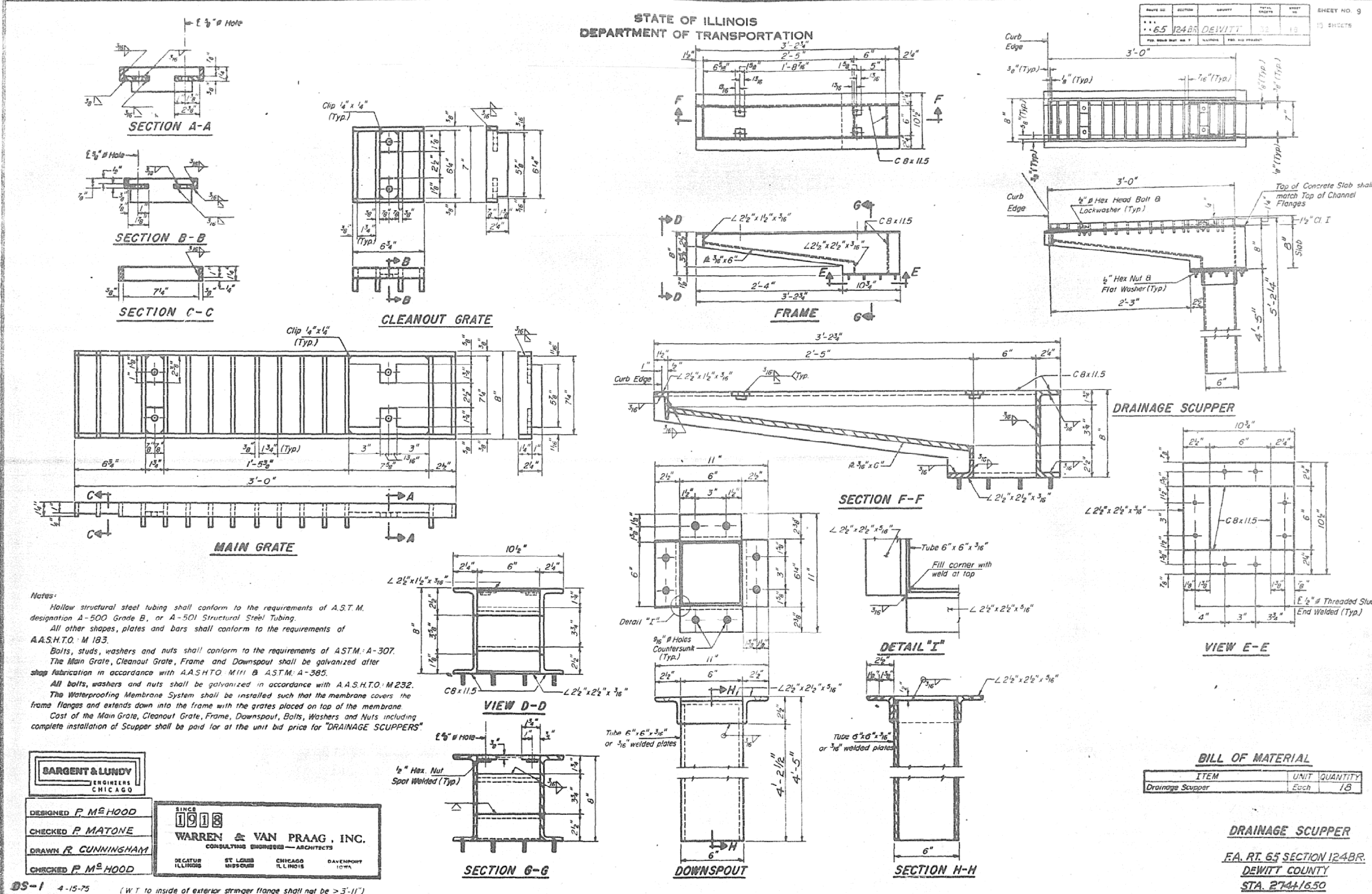
PI-2J 1-15-73

FILE NAME =	USER NAME = simgm	DESIGNED - GMS	REVISED -	STATE OF ILLINOIS DEPARTMENT OF TRANSPORTATION	AS-BUILT PLANS FOR INFORMATION ONLY	F.A.P. RTE. 760	SECTION 124 BR-1	COUNTY DEWITT	TOTAL SHEETS 23	SHEET NO. 17		
ct:\pwork\VP\DDT\SIMSGM\d8179794\05705	31-sht-Bridge Repair Plans.dgn	DRAWN - GMS	REVISED -			SCALE: _____	SHEET NO. 14 OF 16 SHEETS	STA. _____	TO STA. _____	CONTRACT NO. 70531		
	PLOT SCALE = 41.6516' / IN.	CHECKED -	REVISED -			FED. ROAD DIST. NO. _____ ILLINOIS FED. AID PROJECT						
	PLOT DATE = 2/19/2010	DATE -	REVISED -									

AS-BUILT PLANS FOR INFORMATION ONLY

STATE OF ILLINOIS
DEPARTMENT OF TRANSPORTATION

PROJECT NO.	SECTION	SHEET NO.	TOTAL SHEETS	SHEET NO.
65	124 BR	DEWITT	18	15
SHEETS				



Notes:
 Hollow structural steel tubing shall conform to the requirements of A.S.T.M. designation A-500 Grade B, or A-501 Structural Steel Tubing.
 All other shapes, plates and bars shall conform to the requirements of A.A.S.H.T.O. M 183.
 Bolts, studs, washers and nuts shall conform to the requirements of ASTM: A-307.
 The Main Grate, Cleanout Grate, Frame and Downspout shall be galvanized after shop fabrication in accordance with A.A.S.H.T.O. M 111 & ASTM: A-385.
 All bolts, washers and nuts shall be galvanized in accordance with A.A.S.H.T.O. M 232.
 The Waterproofing Membrane System shall be installed such that the membrane covers the frame flanges and extends down into the frame with the grates placed on top of the membrane.
 Cost of the Main Grate, Cleanout Grate, Frame, Downspout, Bolts, Washers and Nuts including complete installation of Scupper shall be paid for at the unit bid price for "DRAINAGE SCUPPERS".

SARGENT & LUNDY
ENGINEERS
CHICAGO

DESIGNED **P. McHOOD**
CHECKED **P. MATONE**
DRAWN **R. CUNNINGHAM**
CHECKED **P. McHOOD**

SINCE 1918
WARREN & VAN PRAAG, INC.
CONSULTING ENGINEERS - ARCHITECTS
DECATUR ILLINOIS ST. LOUIS MISSOURI CHICAGO ILLINOIS DAVENPORT IOWA

DS-1 4-15-75 (WT to inside of exterior stringer flange shall not be > 3'-11")

BILL OF MATERIAL

ITEM	UNIT	QUANTITY
Drainage Scupper	Each	18

DRAINAGE SCUPPER
F.A. RT. 65 SECTION 124 BR.
DEWITT COUNTY
STA. 2744/650

FILE NAME =	USER NAME =	DESIGNED -	REVISED -
c:\pwork\VPIDDT\SIMSGM\d8179794\05705	simgn	GMS	---
PLOT SCALE = 41.6516 / 1 IN.	31-sht-Bridge Repair Plans.dgn	DRAWN -	REVISED -
PLOT DATE = 2/19/2010		GMS	---
		CHECKED -	REVISED -
		---	---
		DATE -	REVISED -
		-----	---

**STATE OF ILLINOIS
DEPARTMENT OF TRANSPORTATION**

**AS-BUILT PLANS
FOR INFORMATION ONLY**

SCALE: SHEET NO. 15 OF 16 SHEETS STA. TO STA.

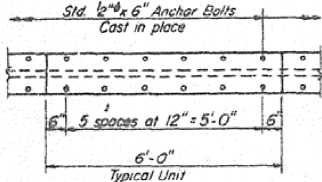
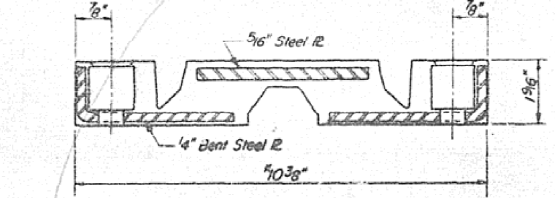
F.A.P. RTE.	SECTION	COUNTY	TOTAL SHEETS	SHEET NO.
760	124 BR-1	DEWITT	23	18
CONTRACT NO. 70531				
FED. ROAD DIST. NO. - ILLINOIS FED. AID PROJECT				

AS-BUILT PLANS FOR INFORMATION ONLY

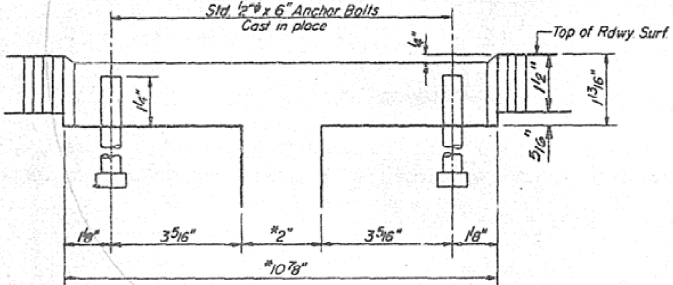
STATE OF ILLINOIS
DEPARTMENT OF TRANSPORTATION

SHEET NO. 10	PROJECT NO. 65	SECTION 124 BR-1	COUNTY DEWITT	SHEET NO. 32	OF 19	TOTAL SHEETS 15
--------------	----------------	------------------	---------------	--------------	-------	-----------------

ORDERED 3-28-77



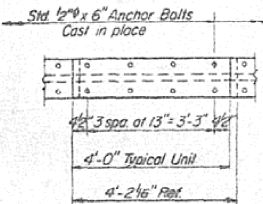
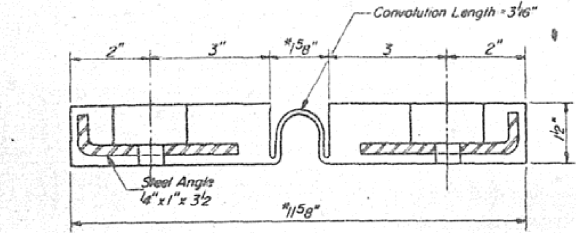
PLAN



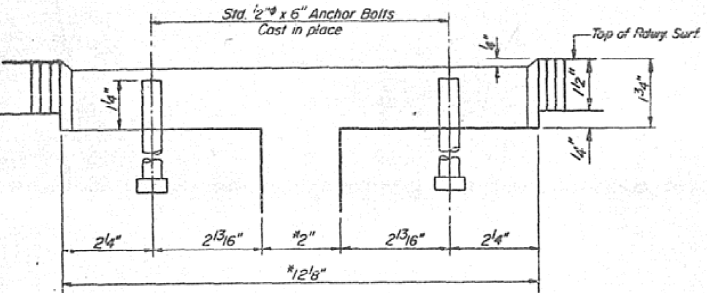
CROSS SECTION
*At 50°F
Dimensions are at right angles.

Note: Anchor bolts require a clipped washer, lockwasher and hex nut.

TRANSFLEX MODEL 200A
(Structural Rubber Products Co.)



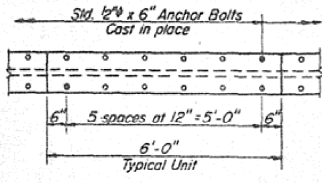
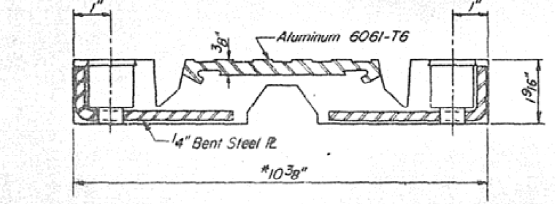
PLAN



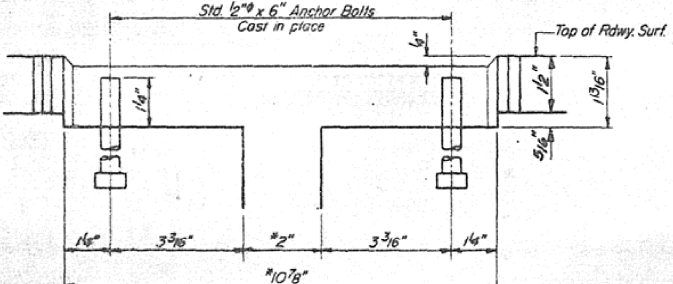
CROSS SECTION
*At 50°F
Dimensions are at right angles.

Note: Anchor bolts require a flat washer and locknut.

FEL-SPAN MODEL T-30
(Fel-Pro Building Products Inc.)



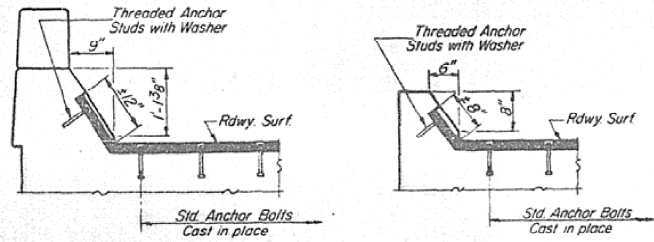
PLAN



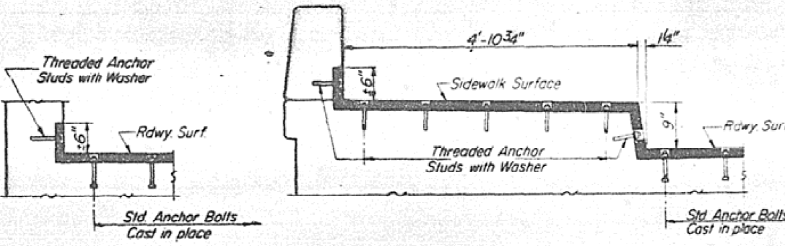
CROSS SECTION
*At 50°F
Dimensions are at right angles.

Note: Anchor bolts require a clipped washer, lockwasher and hex nut.

WABOFLEX MODEL SR 2
(Watson-Bowman Associates Inc.)



AT CURBS



AT ABUTMENT

AT SIDEWALK

TYPICAL END TREATMENTS

NOTE:
Joint openings shall be adjusted in accordance with Article 503.07(c) of the Std Specs, when the deck is poured at an ambient temperature other than 50°F.

NEOPRENE EXPANSION JOINTS (2")
FOR EXPANSION LENGTH OF DECK = 0 to 160 ft.

F.A. RT. 65 SECTION 124-BR.
DEWITT COUNTY
STA. 274+16.50

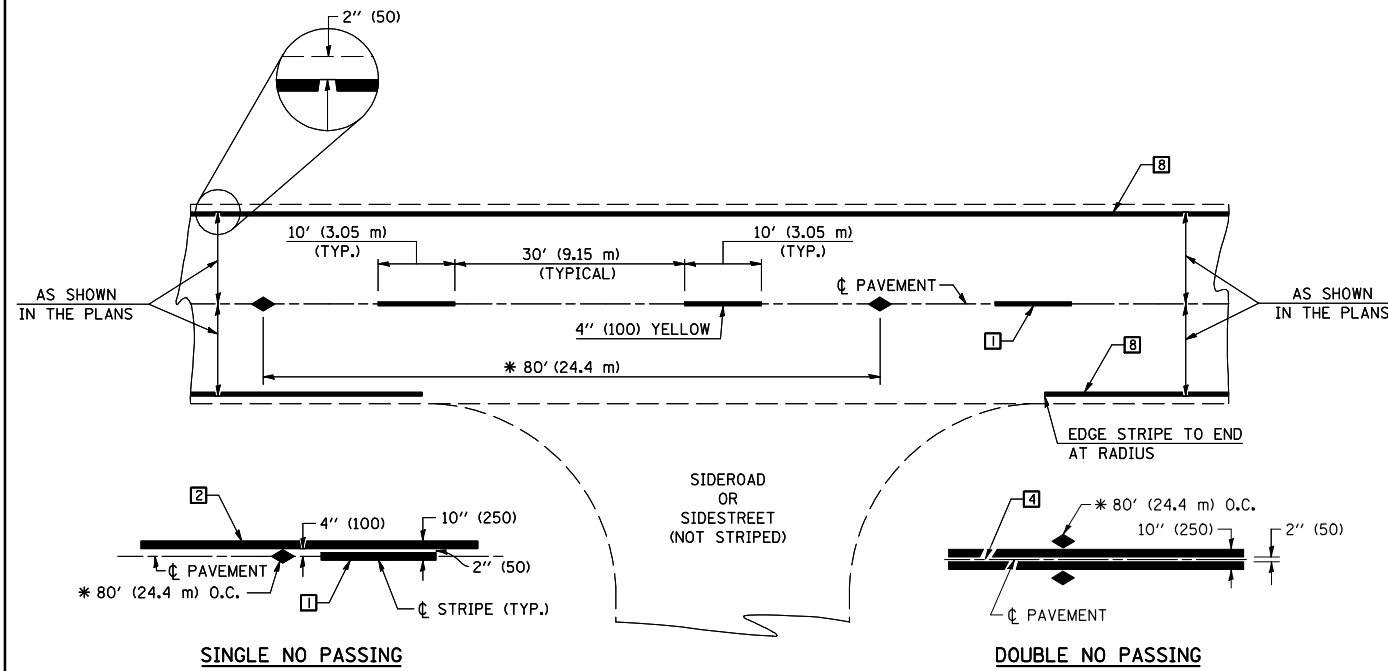
DESIGNED **P. McHOOD**
CHECKED **P. MATONE**
DRAWN **R. CUNNINGHAM**
CHECKED **P. McHOOD**

SINCE 1918
WARREN & VAN PRAAG, INC.
CONSULTING ENGINEERS - ARCHITECTS
DECATUR ILLINOIS ST. LOUIS MISSOURI CHICAGO ILLINOIS DAVENPORT IOWA

SARGENT & LUNDY
ENGINEERS
CHICAGO

EJ-1 4-15-75

FILE NAME =	USER NAME = smsgm	DESIGNED - GMS	REVISED - ---	STATE OF ILLINOIS DEPARTMENT OF TRANSPORTATION	AS-BUILT PLANS FOR INFORMATION ONLY	F.A.P. RTE. 760	SECTION 124 BR-1	COUNTY DEWITT	TOTAL SHEETS 23	SHEET NO. 19		
ct:\pwork\PWIDOT\SIMSGM\d8179794\05708	31-shr-Bridge Repair Plans.dgn	DRAWN - GMS	REVISED - ---			SCALE: _____	SHEET NO. 16 OF 16 SHEETS	STA. _____	TO STA. _____	CONTRACT NO. 70531		
	PLOT SCALE = 41.6516 / IN.	CHECKED - ---	REVISED - ---			FED. ROAD DIST. NO. - ILLINOIS FED. AID PROJECT						
	PLOT DATE = 2/19/2010	DATE - -----	REVISED - ---									



* REDUCE TO 40' (12.2 m) O.C. ON CURVES WITH POSTED OR ADVISORY SPEEDS OF 45 mph (70 km/h) OR LESS.

TWO LANE/TWO WAY

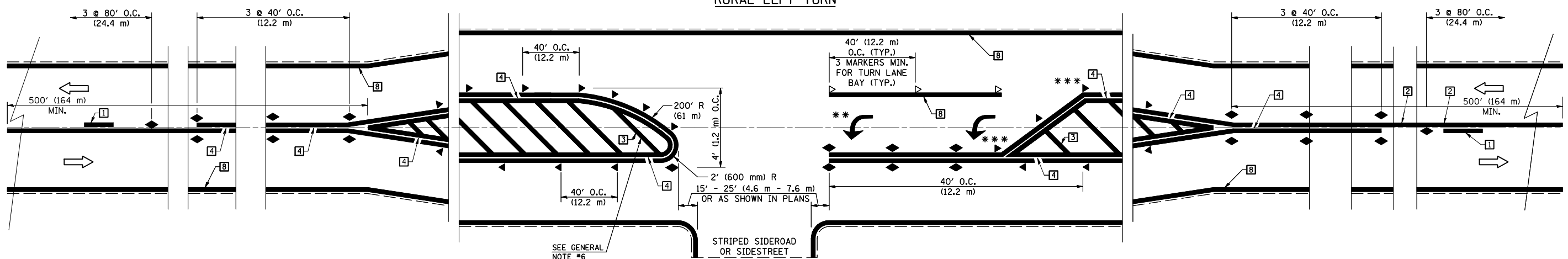
TYPICAL PAVEMENT MARKING LEGEND

- 1 4" (100) SKIP-DASH (YELLOW)
- 2 4" (100) SOLID (YELLOW)
- 3 12" (300) DIAGONAL (YELLOW)
- 4 4" (100) DOUBLE YELLOW (NARROW)
- 5 RESERVED
- 6 RESERVED
- 7 4" (100) SKIP-DASH (WHITE)
- 8 4" (100) SOLID (WHITE)
- 9 12" (300) DIAGONAL (WHITE)
- 10 6" (150) SOLID (WHITE)
- 11 24" (600) STOP BAR (WHITE)
- 12 8" (200) SOLID (WHITE)
- 13 4" (100) LANE LINE EXTENSIONS (WHITE)
- 14 4" (100) PARKING WHITE

TYPICAL PAVEMENT MARKERS LEGEND

- ◆ TWO-WAY AMBER MARKER
- ▶ ONE-WAY AMBER MARKER
- ▷ ONE-WAY CRYSTAL MARKER

RURAL LEFT TURN



*** REDUCE SPACING IF NECESSARY TO ASSURE MARKERS AT CORNER POINTS.

** TURN ARROWS SHALL BE PLACED AS SHOWN ON SHEET #2.

Note: All dimensions are in INCHES (millimeters) unless otherwise shown.

FILE NAME =	USER NAME = simgm	DESIGNED -	REVISED - 11/06
c:\pwork\pwwdt\SIMSGM\d0179794\05705	31-shr-Bridge Repair Plans.dgn	DRAWN -	REVISED - 09/2009 - KJI
	PLOT SCALE = 41.6516' / IN.	CHECKED -	REVISED -
	PLOT DATE = 2/19/2010	DATE -	REVISED -

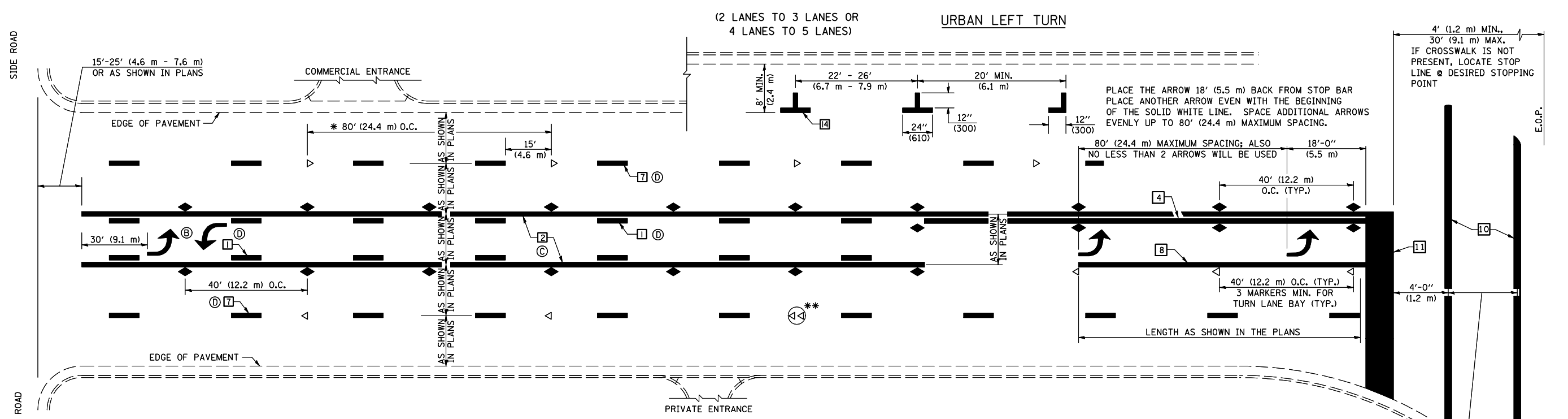
**STATE OF ILLINOIS
DEPARTMENT OF TRANSPORTATION**

**PAVEMENT MARKING AND MARKERS
(RURAL & URBAN APPLICATIONS)**

SCALE: SHEET NO. 1 OF 4 SHEETS STA. TO STA.

DISTRICT 5 DETAIL NO. 7800AAAA

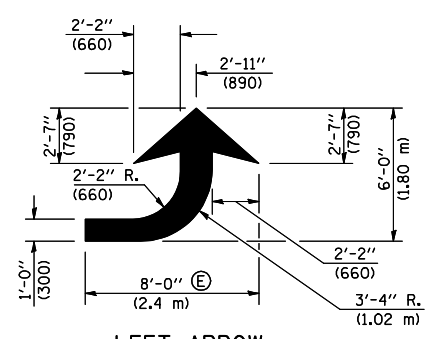
F.A.P. RTE.	SECTION	COUNTY	TOTAL SHEETS	SHEET NO.
760	124 BR-1	DEWITT	23	20
CONTRACT NO. 70531				
FED. ROAD DIST. NO. ILLINOIS FED. AID PROJECT				



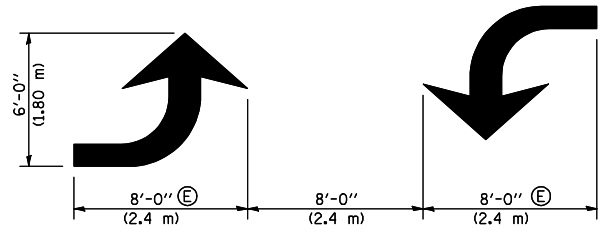
* REDUCE TO 40 FEET (12.2 METERS) ON CENTER ON CURVES WHERE ADVISORY SPEEDS ARE 10 MPH (15 km/h) LOWER THAN POSTED SPEEDS.

** DOUBLE LANE LINE MARKERS SHALL BE SPECIFIED AND SPACED AS SHOWN IN HIGHWAY STANDARD 781001 FOR MULTI-LANE DIVIDED AND UNDIVIDED HIGHWAYS.

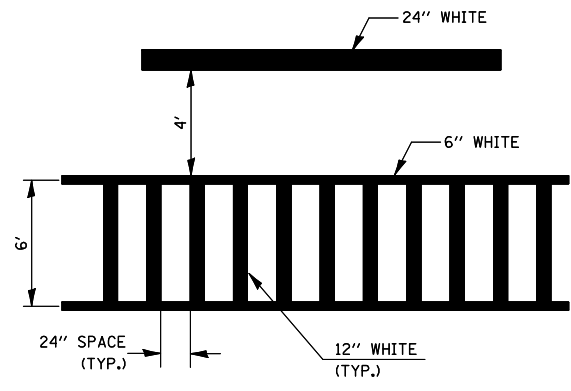
- GENERAL NOTES:**
- ⓑ TURN ARROW PAIRS SHALL BE PLACED AT 250' (75 m) INTERVALS AND SHALL BE EVENLY SPACED BETWEEN BOTH ENDS OF THE BIDIRECTIONAL LEFT TURN LANE.
 - ⓒ THE SOLID YELLOW PAVEMENT MARKINGS [2] SHOULD GENERALLY START OR END NEAR THE RADIUS POINT OF EACH STREET RETURN EXCEPT WHERE ONE OR BOTH ENDS WOULD INCLUDE STOP BARS.
 - ⓓ THE SKIP-DASH PAVEMENT MARKINGS [1] OR [7] SHOULD BE CENTERED BETWEEN BOTH ENDS OF EACH CITY BLOCK AND SHALL BE PLACED SO THEY LINE UP ACROSS FROM EACH OTHER. SEE EXAMPLE ON SHEET 2 OF 3.
 - ⓔ USE LARGE ARROW SIZE FOR BOTH RURAL AND URBAN LOCATIONS. (SEE LAST PAGE OF SECTION 780x FOR SYMBOLS TABLE)



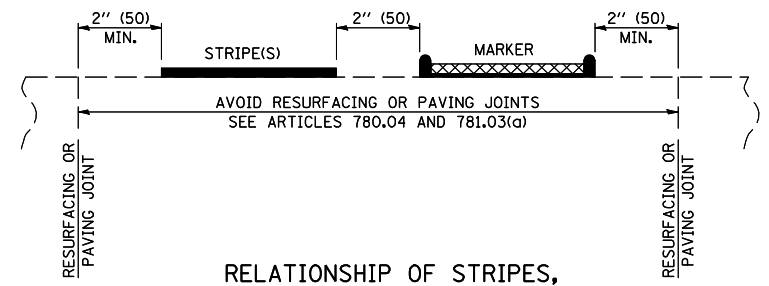
LEFT ARROW
 REVERSE FOR RIGHT ARROW
 AREA = 15.6 SQ. FT. (1.47 m²)
 (WHITE)



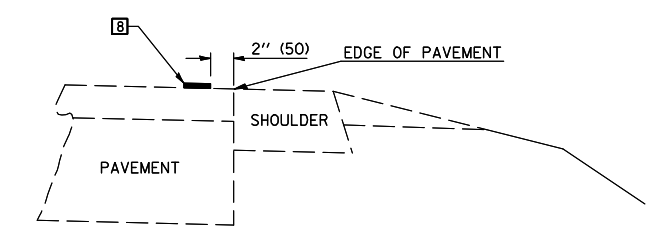
TYPICAL DOUBLE TURN ARROWS (WHITE)



TYPICAL SPACING FOR CROSSWALKS & STOP BARS



RELATIONSHIP OF STRIPES, MARKERS AND JOINTS



RELATIONSHIP OF EDGE LINE TO EDGE OF PAVEMENT
 (SAFETY SHOULDER OR PAVED SURFACE)
 SEE ARTICLE 780.04

Note: All dimensions are in INCHES (millimeters) unless otherwise shown.

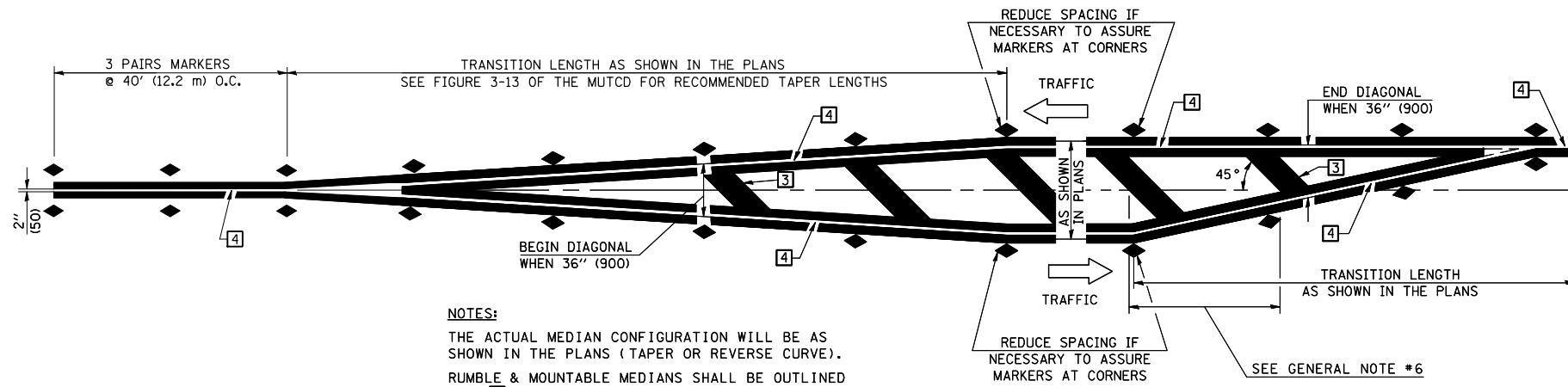
FILE NAME =	USER NAME = s1msgm	DESIGNED -	REVISED - 11/2006
ct:\pwork\pwwdt\S1MSGM\d0179794\05708	31-sht-Brldge Repair Plans.dgn	DRAWN -	REVISED - 09/2009 - KJI
	PLOT SCALE = 41.6516 / / IN.	CHECKED -	REVISED -
	PLOT DATE = 2/19/2010	DATE -	REVISED -

STATE OF ILLINOIS
DEPARTMENT OF TRANSPORTATION

PAVEMENT MARKING AND MARKERS
(RURAL & URBAN APPLICATIONS)

SCALE: _____ SHEET NO. 2 OF 4 SHEETS STA. _____ TO STA. _____

DISTRICT 5 DETAIL NO. 7800AAAA				
F.A.P. RTE.	SECTION	COUNTY	TOTAL SHEETS	SHEET NO.
760	124 BR-1	DEWITT	23	21
CONTRACT NO. 70531				
FED. ROAD DIST. NO. - ILLINOIS/ FED. AID PROJECT				

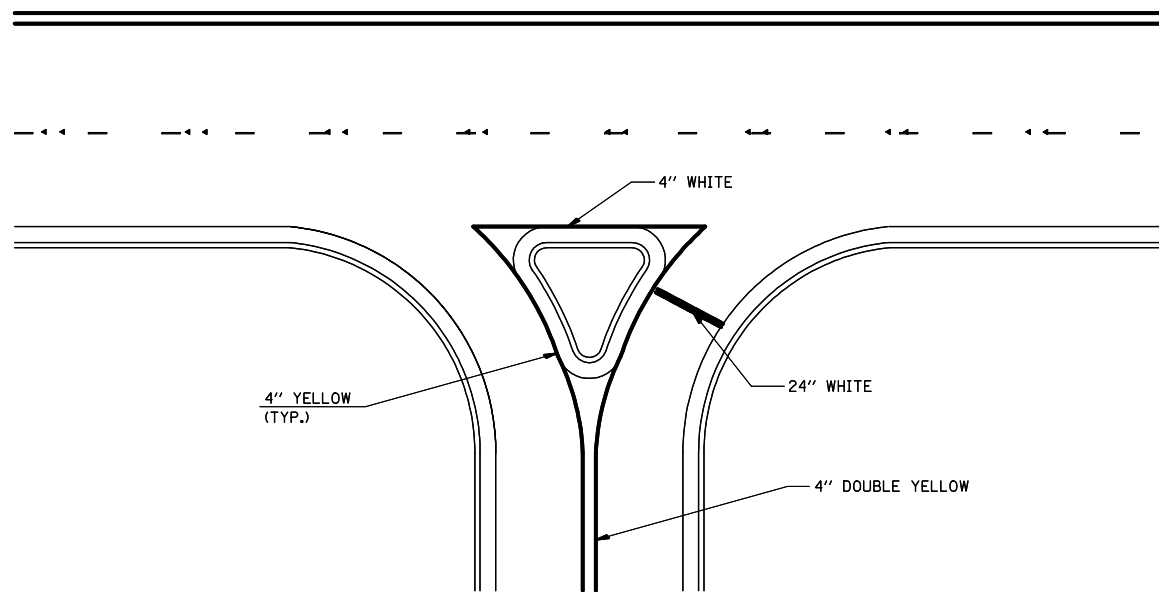


NOTES:
 THE ACTUAL MEDIAN CONFIGURATION WILL BE AS SHOWN IN THE PLANS (TAPER OR REVERSE CURVE).
 RUMBLE & MOUNTABLE MEDIANS SHALL BE OUTLINED WITH [2].

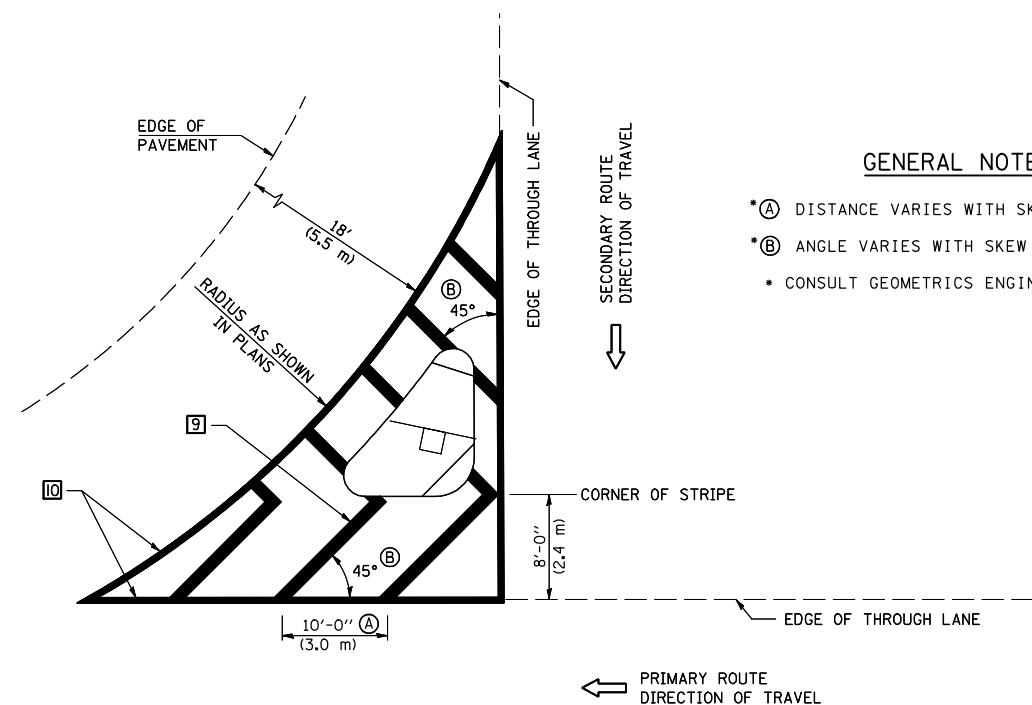
TYPICAL MEDIAN TRANSITIONS

GENERAL NOTES

1. WHEN MEDIANS ARE PRESENT, PAVEMENT MARKINGS ARE TO BE PLACED ADJACENT TO MEDIANS.
2. SOME OF THE INFORMATION INCLUDED WITH THIS DETAIL MAY NOT BE APPLICABLE TO THIS IMPROVEMENT.
3. PAVEMENT MARKINGS ARE TO BE EXTENDED THROUGH OMISSIONS WHEN APPLICABLE.
4. A STRIPING KEY IS AVAILABLE ELSEWHERE AND SHALL BE SHOWN WHERE THE QUANTITIES ARE LISTED.
5. FINAL PAVEMENT MARKINGS SHALL BE IN PLACE PRIOR TO PLACING ANY RAISED REFLECTIVE PAVEMENT MARKERS.
6. THE FOLLOWING CRITERIA SHALL BE USED FOR SELECTING THE DIAGONAL PAVEMENT MARKING SPACING,
 < 30 MPH USE 15' (< 50 km/h USE 4.5 m)
 30-45 MPH USE 20' (50-75 km/h USE 6.0 m)
 > 45 MPH USE 30' (> 75 km/h USE 9.0 m)



RIGHT IN - RIGHT OUT ACCESS



GENERAL NOTES

- *A DISTANCE VARIES WITH SKEW OF INTERSECTION.
- *B ANGLE VARIES WITH SKEW OF INTERSECTION.
- CONSULT GEOMETRICS ENGINEER

ISLAND

Note: All dimensions are in INCHES (millimeters) unless otherwise shown.

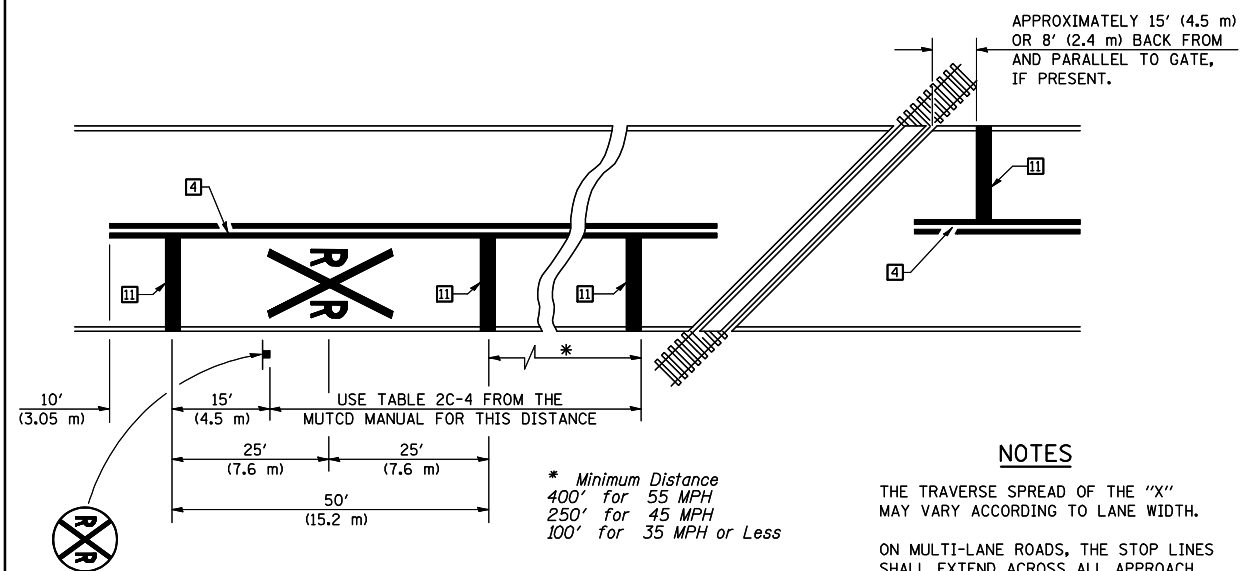
FILE NAME =	USER NAME = sismgm	DESIGNED -	REVISED - 11/2006
c:\pwork\PWIDOT\SIMSGM\d0179794\05705	31-sht-B-ridge Repair Plans.dgn	DRAWN -	REVISED - 09/2009 -- KJI
	PLOT SCALE = 41.6516' / IN.	CHECKED -	REVISED -
	PLOT DATE = 2/19/2010	DATE -	REVISED -

**STATE OF ILLINOIS
 DEPARTMENT OF TRANSPORTATION**

**PAVEMENT MARKING AND MARKERS
 (RURAL & URBAN APPLICATIONS)**

SCALE: _____ SHEET NO. 3 OF 4 SHEETS STA. _____ TO STA. _____

DISTRICT 5 DETAIL NO. 7800AAA				
F.A.P. RTE.	SECTION	COUNTY	TOTAL SHEETS	SHEET NO.
760	124 BR-1	DEWITT	23	22
CONTRACT NO. 70531				
FED. ROAD DIST. NO. - [ILLINOIS] FED. AID PROJECT				



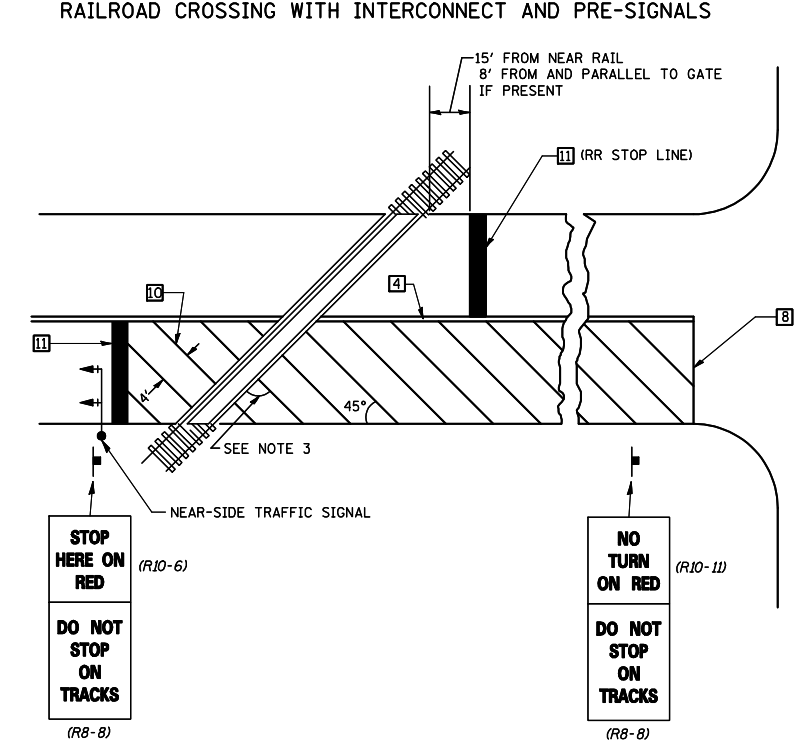
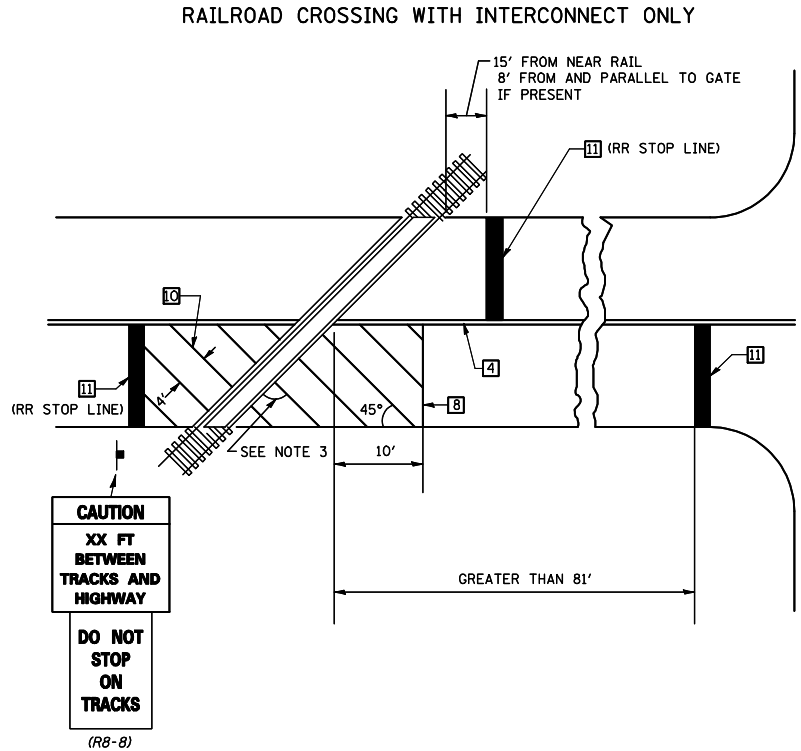
PAVEMENT MARKINGS AT RAILROAD-HIGHWAY GRADE CROSSING

NOTES

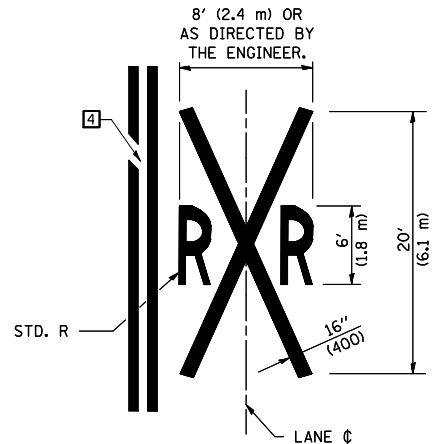
THE TRAVERSE SPREAD OF THE "X" MAY VARY ACCORDING TO LANE WIDTH.

ON MULTI-LANE ROADS, THE STOP LINES SHALL EXTEND ACROSS ALL APPROACH LANES AND SEPARATE RXR SYMBOLS SHALL BE PLACED ADJACENT TO EACH OTHER IN EACH LANE.

WHEN THE PAVEMENT MARKING SYMBOL IS USED, A PORTION OF THE SYMBOL SHOULD BE LOCATED DIRECTLY ADJACENT TO THE ADVANCE WARNING SIGN (W10-1) AS PLACED BY TABLE II-1, CONDITION B OF THE MUTCD.



SUPPLEMENTAL PAVEMENT MARKING TREATMENT FOR RAILROAD-HIGHWAY GRADE CROSSING



GENERAL NOTES

- SUPPLEMENTAL PAVEMENT MARKINGS TO BE INSTALLED ONLY ON APPROACHES TO INTERSECTIONS CONTROLLED BY TRAFFIC SIGNALS WHICH ARE INTERCONNECTED WITH THE RAILROAD WARNING SIGNALS.
- EXTEND PAVEMENT MARKINGS TO THE INTERSECTION ONLY WHERE NEAR-SIDE TRAFFIC SIGNALS ARE USED.
- WHERE THE ANGLE BETWEEN THE DIAGONAL PAVEMENT MARKINGS AND THE TRACK WOULD BE LESS THAN 20°, THE PAVEMENT MARKINGS SHOULD BE PLACED IN THE OPPOSITE DIRECTION FROM THAT SHOWN.

Note: All dimensions are in INCHES (millimeters) unless otherwise shown.

FILE NAME =	USER NAME = s1msgm	DESIGNED -	REVISED - 11/06
ct:\pwork\PWIDOT\S1MSGM\d8179794\05708	31-sht-Bridge Repair Plans.dgn	DRAWN -	REVISED - 09/2009 - KJI
	PLOT SCALE = 41.6516' / IN.	CHECKED -	REVISED -
	PLOT DATE = 2/19/2010	DATE -	REVISED -

STATE OF ILLINOIS DEPARTMENT OF TRANSPORTATION

PAVEMENT MARKING AND MARKERS (RURAL & URBAN APPLICATIONS)

SCALE: _____ SHEET NO. 4 OF 4 SHEETS STA. _____ TO STA. _____

DISTRICT 5 DETAIL NO. 7800AAAA				
F.A.P. RTE.	SECTION	COUNTY	TOTAL SHEETS	SHEET NO.
760	124 BR-1	DEWITT	23	23
CONTRACT NO. 70531				
FED. ROAD DIST. NO. - ILLINOIS FED. AID PROJECT				