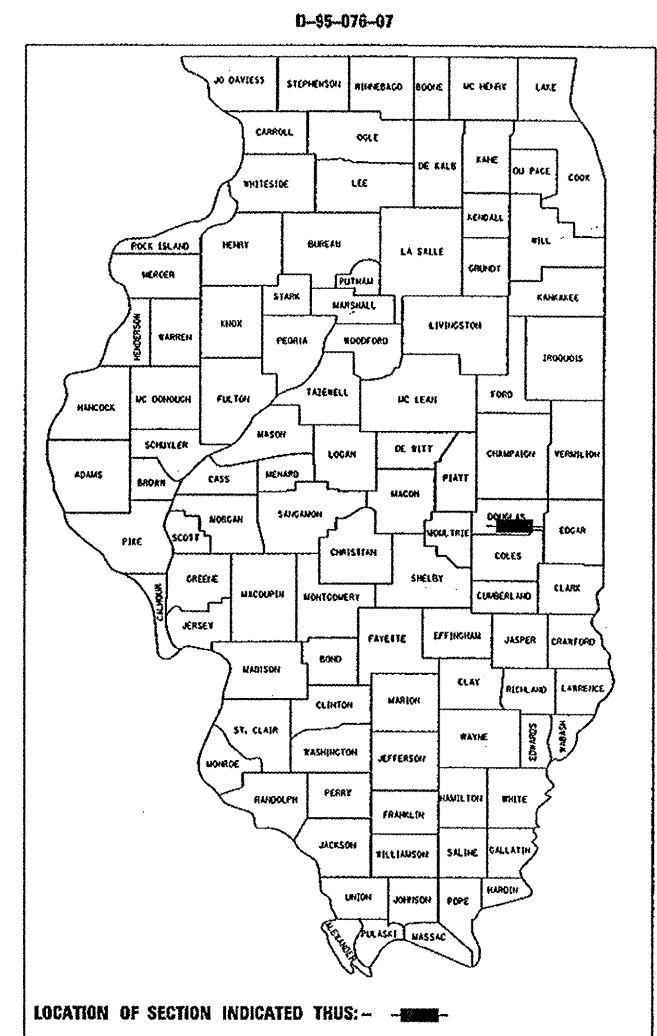


STATE OF ILLINOIS
DEPARTMENT OF TRANSPORTATION
DIVISION OF HIGHWAYS

**PROPOSED
HIGHWAY PLANS**

FAP ROUTE 323 (US 36)
SECTION (145,146)CR
PROJECT ACNHF-0323(028)
DOUGLAS COUNTY

F.A.P. RTE.	SECTION	COUNTY	TOTAL SHEETS	SHEET NO.
323	(145,146)CR	DOUGLAS	36	1
		ILLINOIS	CONTRACT NO. 70696	



FOR INDEX OF SHEETS, SEE SHEET NO. 2
FOR SUMMARY OF QUANTITIES, SEE SHEET NO. 3 & 4

STRUCTURE INFORMATION

S.N.	SCOPE OF WORK
021-8021	CULVERT REPLACEMENT
021-8022	CULVERT REPLACEMENT
021-8024	CULVERT REPLACEMENT

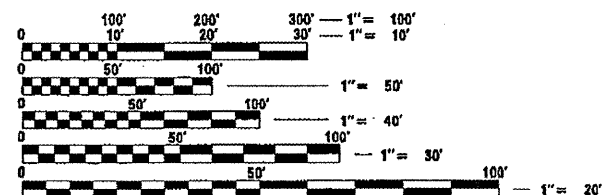
C-95-076-07
CULVERT REPLACEMENT

DITCH 3.3 MI & 4.3 MI E OF CAMARGO & W OF NEWMAN

CURRENT ADT:
ADT IS FOR ALL THREE BOX CULVERTS

CURRENT ADT =	2,600 (2008)
20 YR ADT =	3,100 (2028)
PU & PC % =	80.2
SU % =	6.5
MUZ =	13.3

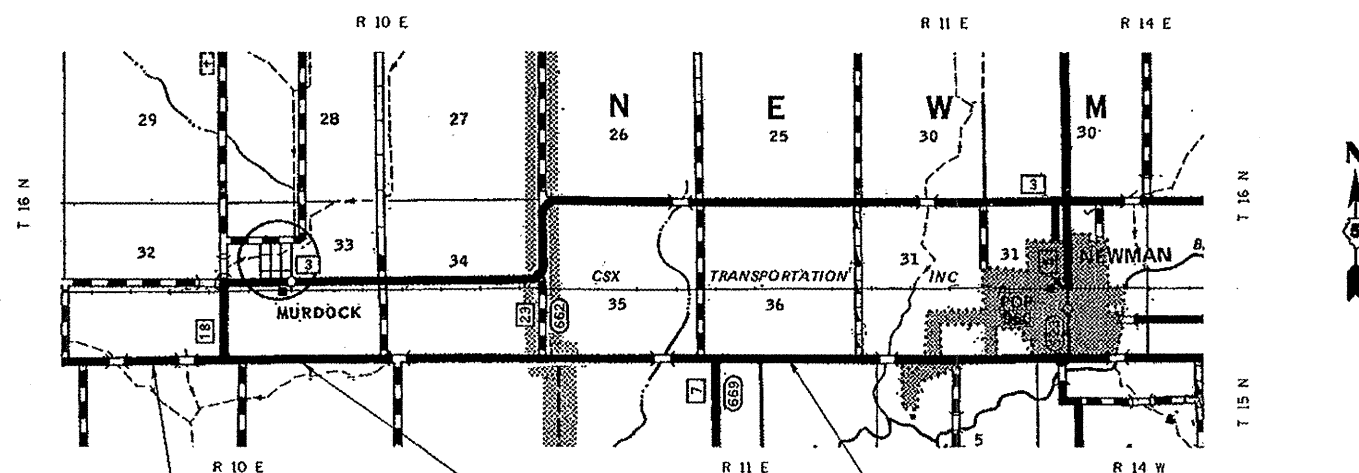
DESIGN DESIGNATION
OTHER PRINCIPAL ARTERIAL



FULL SIZE PLANS HAVE BEEN PREPARED USING STANDARD ENGINEERING SCALES. REDUCED SIZED PLANS WILL NOT CONFORM TO STANDARD SCALES. IN MAKING MEASUREMENTS ON REDUCED PLANS, THE ABOVE SCALES MAY BE USED.

J.U.L.I.E.
JOINT UTILITY LOCATION INFORMATION FOR EXCAVATION
1-800-892-0123
OR 811
NEWMAN & MURDOCK TOWNSHIPS

PROJECT ENGINEER : KEVIN TRAPP (217) 465-4181
PROJECT MANAGER : JEFF SHERER
DESIGNER : RANDY AUSTIN
CONTRACT NO. 70696



EXIST. S.N. 021-8021
PROP. S.N. 021-8052
CULVERT NO. 1
STATION 504+56.81
PROP. PC BOX CULVERT
1 @ 8' X 3' X 62"
W / CIP END SECTIONS

EXIST. S.N. 021-8022
PROP. S.N. 021-8053
CULVERT NO. 2
STATION 557+90.90
PROP. PC BOX CULVERT
2 @ 8' X 3' X 62"
W / CIP END SECTIONS

EXIST. S.N. 021-8024
PROP. S.N. 021-8054
CULVERT NO. 3
STATION 719+50.50
PROP. PC BOX CULVERT
1 & 12' X 4' X 62"
W / CIP END SECTIONS

GROSS & NET LENGTH = 91.6 FT. = 0.017 MILE

STATE OF ILLINOIS
DEPARTMENT OF TRANSPORTATION
DIVISION OF HIGHWAYS

SUBMITTED 3/22/2010
Dusette A. Cowardin
DEPUTY DIRECTOR OF HIGHWAYS, REGION ENGINEER

May 7 2010
Scott E. Hill
ENGINEER OF DESIGN AND ENVIRONMENT

May 7 2010
Christine M. Rood
DIRECTOR OF HIGHWAYS, CHIEF ENGINEER

PRINTED BY THE AUTHORITY
OF THE STATE OF ILLINOIS