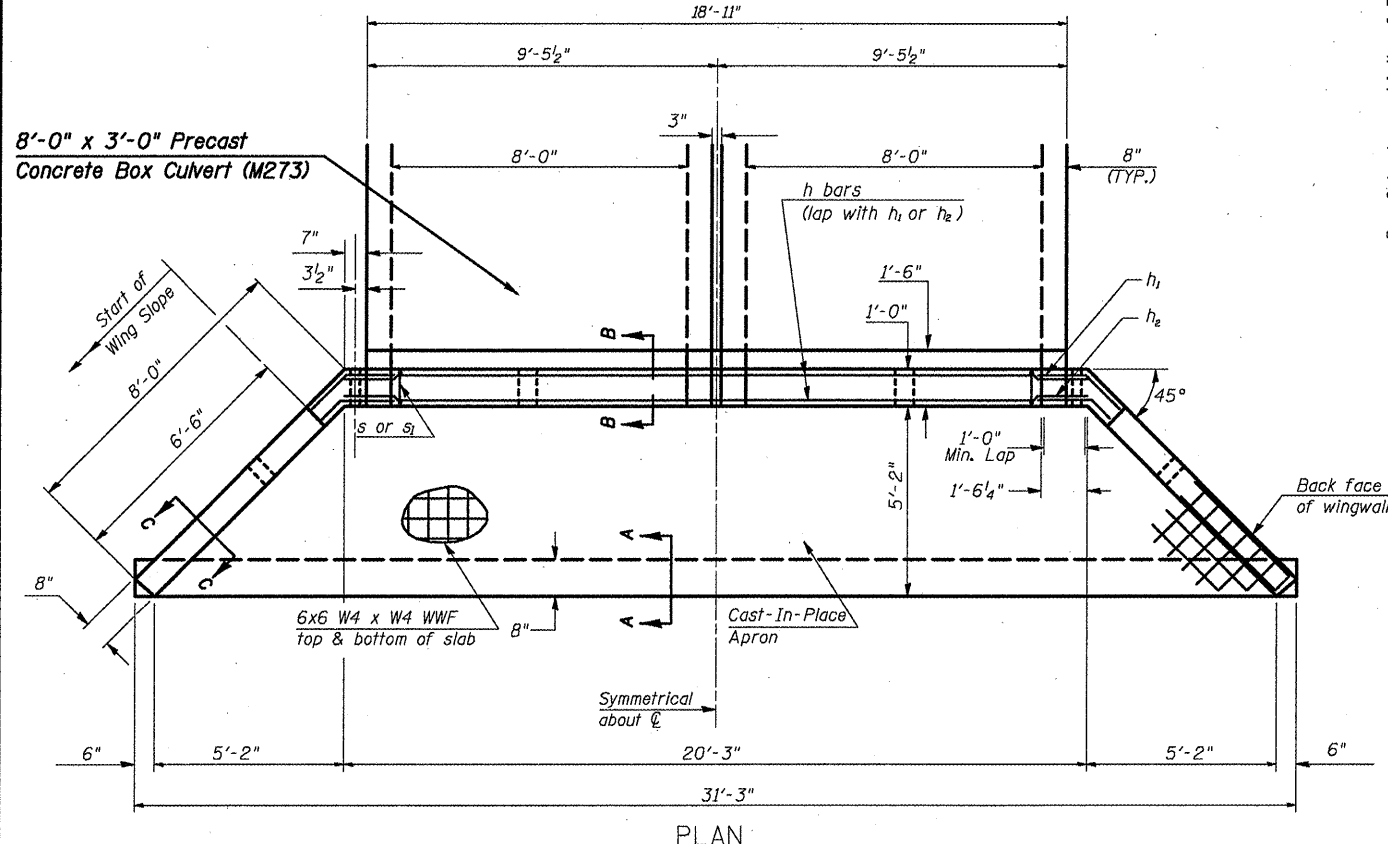
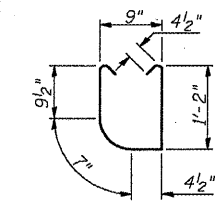


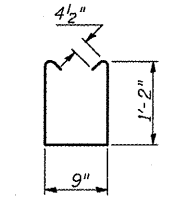
**END ELEVATION**



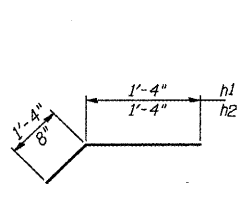
**PLAN**



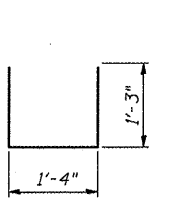
**s1 BARS**  
UPSTREAM END



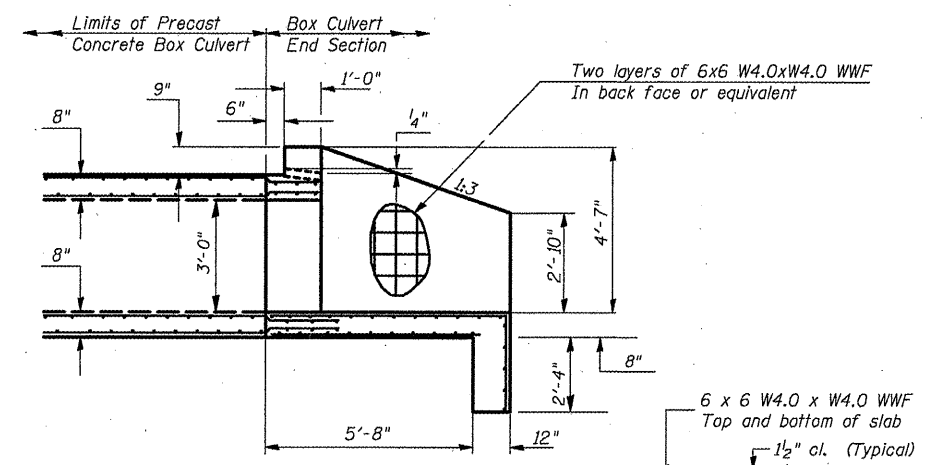
**s BARS**  
DOWNSTREAM END



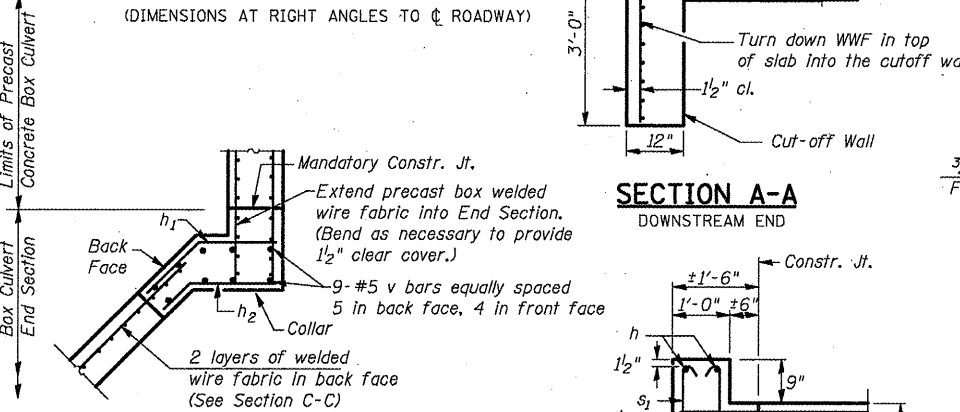
**h1 & h2 BARS**



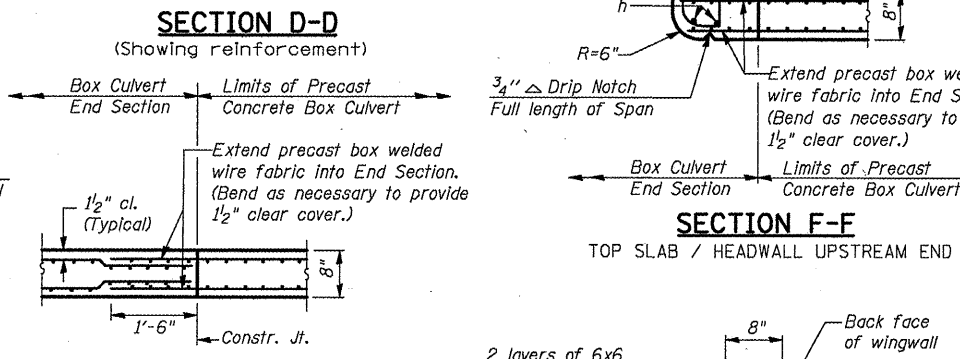
**h3 BARS**  
DOWNSTREAM END



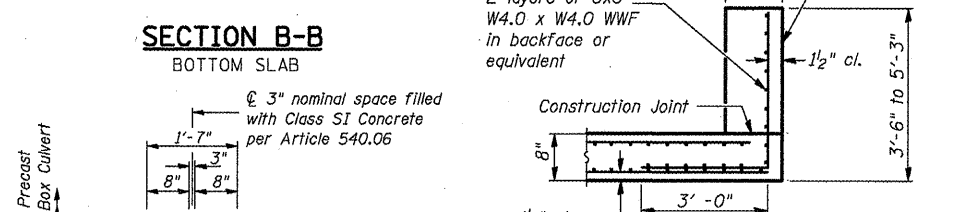
**HALFSIDE ELEVATION**  
(DIMENSIONS AT RIGHT ANGLES TO  $\phi$  ROADWAY)



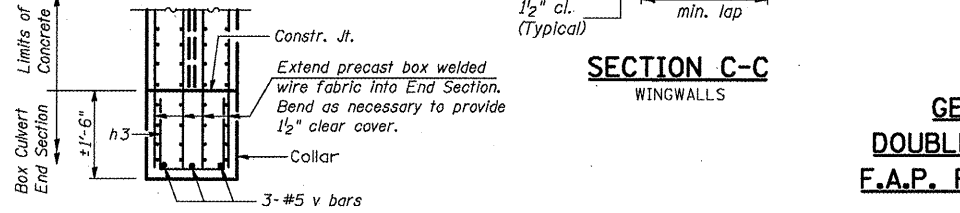
**SECTION A-A**  
DOWNSTREAM END



**SECTION D-D**  
(Showing reinforcement)



**SECTION B-B**  
BOTTOM SLAB

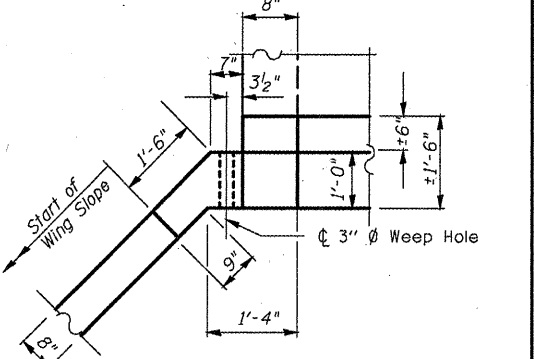


**SECTION C-C**  
WINGWALLS



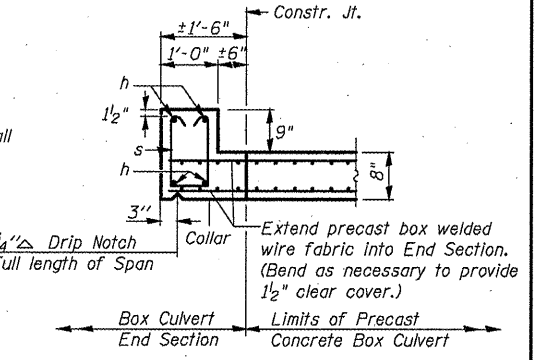
**SECTION E-E**

Tilt or adjust h<sub>3</sub> bar as necessary to fit



**CORNER DETAIL**

(Showing dimensions and weep hole)



**SECTION F-F**  
TOP SLAB / HEADWALL DOWNSTREAM END

Extend precast box welded wire fabric into End Section. (Bend as necessary to provide 1/2 inch clear cover.)

**BILL OF MATERIAL**  
For Information Only  
(One End Section)

Bar	No.	Size	Length	Shape
h	4	#6	20'-0"	—
h <sub>1</sub>	10	#4	2'-8"	—
h <sub>2</sub>	10	#4	2'-0"	—
h <sub>3</sub>	5	#4	3'-10"	—
s or s <sub>1</sub>	19	#4	3'-10"	—
v	21	#5	4'-10"	—
Item		Unit	Total	
Concrete Box Culverts		Cu. Yd.	10.3	
Reinforcement Bars		Pound	353.0	
Welded Wire Fabric		Sq. Ft.	571.0	

**GENERAL PLAN AND ELEVATION**  
**DOUBLE 8'x3' PRECAST BOX CULVERT**  
**F.A.P. ROUTE 323 - SECTION (145.146)CR**  
**DOUGLAS COUNTY**  
**STATION 557+90.90 S.N. 021-8053**  
**CULVERT NO. 2**

FILE NAME =  
c:\pwwork\p\1001\BUCKLESJJ\d0134382\0570696-shd-details.dgn  
PLOT SCALE = 48.0000' / IN.  
PLOT DATE = 3/22/2018

USER NAME = bucklesjj  
DESIGNED - RLA  
DRAWN - RLA  
CHECKED - JMS  
DATE -

REVISED -  
REVISED -  
REVISED -  
REVISED -

**STATE OF ILLINOIS**  
**DEPARTMENT OF TRANSPORTATION**

**BOX CULVERT END SECTION DETAILS**  
**PROPOSED CULVERT NO. 2 - S.N. 021-8053**  
SCALE: N/A SHEET NO. 5 OF 5 SHEETS STA. TO STA.

F.A.P. ROUTE 323 SECTION (145.146)CR COUNTY DOUGLAS TOTAL SHEETS 36 SHEET NO. 19 CONTRACT NO. 70696 ILLINOIS FED. AID PROJECT