

STATE OF ILLINOIS
DEPARTMENT OF TRANSPORTATION
DIVISION OF HIGHWAYS
**PROPOSED
HIGHWAY PLANS**

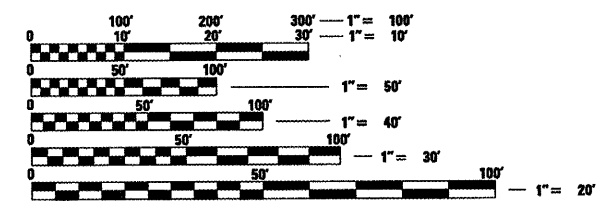
F.A.P. RTE.	SECTION	COUNTY	TOTAL SHEETS	SHEET NO.
332	47RS-11	VERMILION	56	1
		ILLINOIS	CONTRACT NO. 70709	

FOR INDEX OF SHEETS, SEE SHEET NO. 2
FOR SUMMARY OF QUANTITIES SEE SHEET NO. 4, 5, & 6

CURRENT TRAFFIC DATA

LEG "A"	
ADT = 15,300 (2009) 16,800 (2019)	
20 YR ADT = 18,400	
P.U. & P.C. % = 94.7	
S.U. % = 3.7	
M.U. % = 1.6	
LEG "B"	
ADT = 13,700 (2009) 15,100 (2019)	
20 YR ADT = 16,400	
P.U. & P.C. % = 96.0	
S.U. % = 2.6	
M.U. % = 1.4	

DESIGN DESIGNATION
NA



FULL SIZE PLANS HAVE BEEN PREPARED USING STANDARD ENGINEERING SCALES. REDUCED SIZED PLANS WILL NOT CONFORM TO STANDARD SCALES. IN MAKING MEASUREMENTS ON REDUCED PLANS, THE ABOVE SCALES MAY BE USED.

J.U.L.I.E.
JOINT UTILITY LOCATION INFORMATION FOR EXCAVATION
1-800-892-0123
OR 811 (GEORGETOWN & DANVILLE TOWNSHIPS)

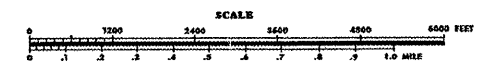
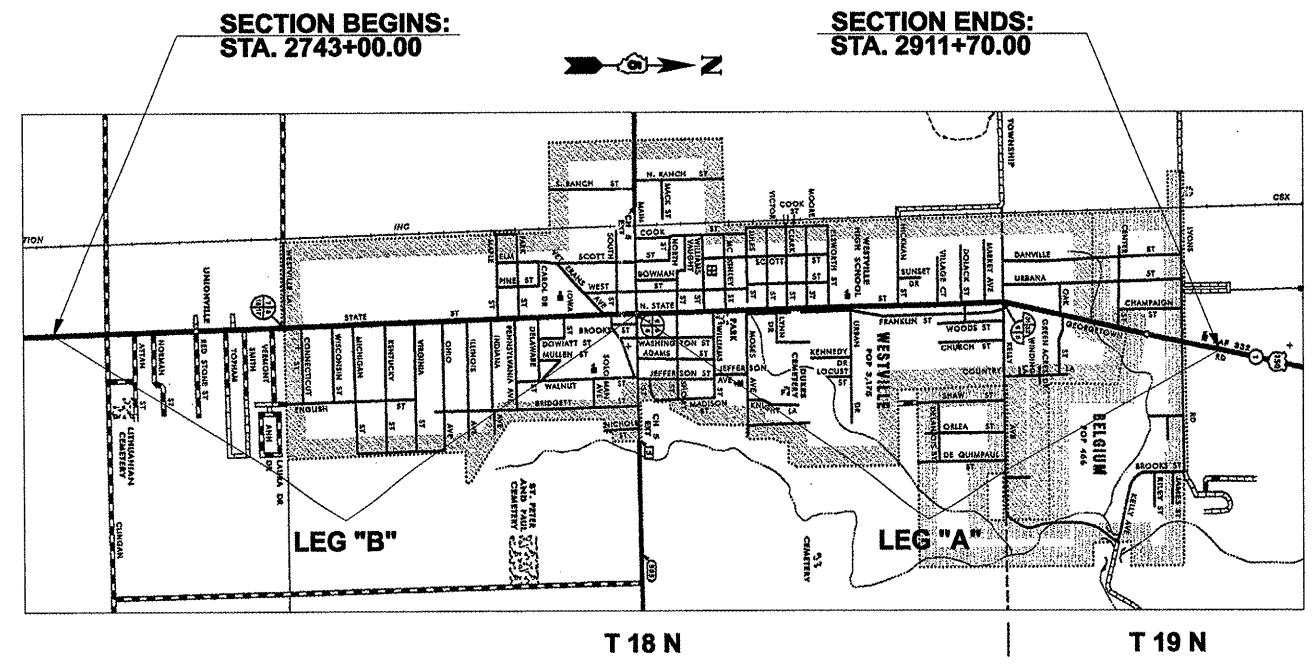
PROJECT ENGINEER: NANCY FASIG
SQUAD LEADER: BRIAN J. HOGAN
DESIGNER: BYRON SMITH
(217)-465-4181

CONTRACT NO. 70709

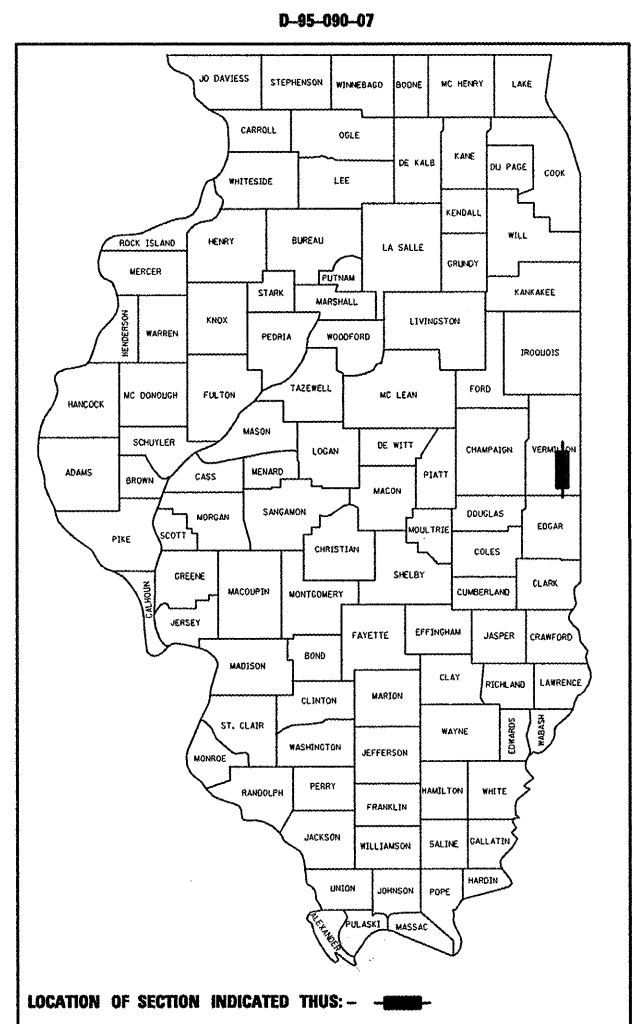
F.A.P. ROUTE 332 (IL 1 / U.S. 150)
SECTION 47RS-11
PROJECT ACNHF-0332(098)
RESURFACING (3P)
VERMILION COUNTY

C-95-090-07

LYON'S ROAD IN BELGIUM TO THE SOUTHERN CORPORATE LIMITS OF WESTVILLE



GROSS LENGTH = 16,870.00 FT. = 3.195 MILE
NET LENGTH = 16,870.00 FT. = 3.195 MILE



STATE OF ILLINOIS
DEPARTMENT OF TRANSPORTATION
DIVISION OF HIGHWAYS

SUBMITTED 3/15 2010
Joseph E. Coover, Jr.
DEPUTY DIRECTOR OF HIGHWAYS, REGION ENGINEER

May 7 2010
Scott E. Stille, Jr.
ENGINEER OF DESIGN AND ENVIRONMENT

May 7 2010
Christine M. Reed
DIRECTOR OF HIGHWAYS, CHIEF ENGINEER

**PRINTED BY THE AUTHORITY
OF THE STATE OF ILLINOIS**