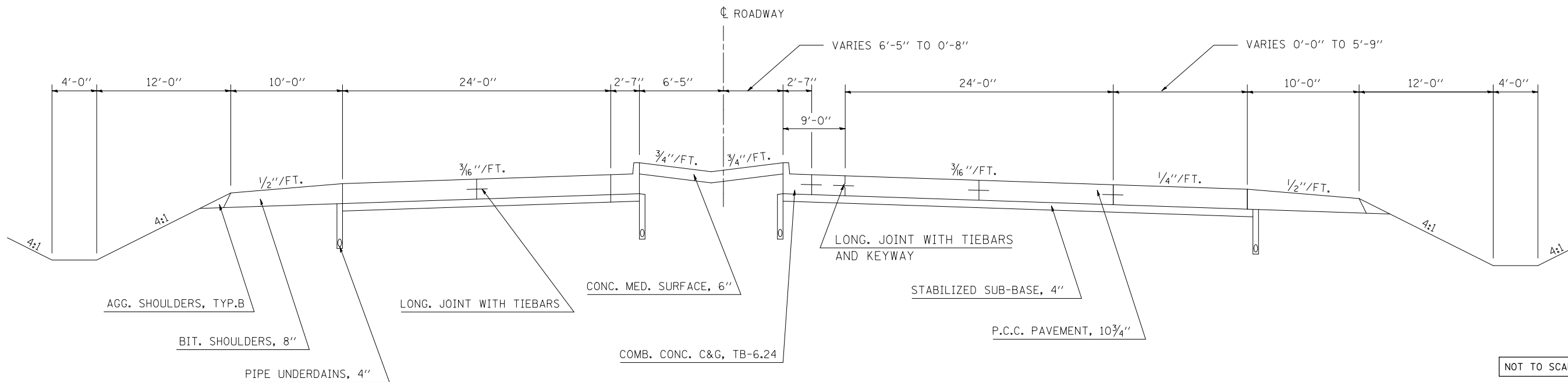


EXISTING TYPICAL SECTION

STATION	TO	STATION
44+82.26		45+97.26
63+90.29		65+05.29
114+40.00		115+55.00
135+08.00		136+23.00
195+20.66		199+29.24

STRUCTURE OMISSION
 S. N. 057-0202: SBL STA. 190+39.00 TO 196+42.10
 S. N. 057-0202: NBL STA. 189+93.00 TO 195+96.00



2 PROPOSED TYPICAL SECTION

HMA SHOULDER REPAIR

- STA. 186+06.00 TO STA. 190+40.84 (SBL)
- STA. 186+06.00 TO STA. 188+13.86 (NBL)
- STA. 194+90.60 TO STA. 196+94.00 (NBL)
- STA. 195+87.50 TO STA. 196+94.00 (SBL)

STATION	TO	STATION
① 44+82.26		③ 45+97.26
⑧ 63+90.29		③ 65+05.29
⑧ 114+40.00		③ 115+55.00
⑧ 135+08.00		③ 136+23.00
* ⑨ 196+42.10		③ 199+29.24

STRUCTURE OMISSION
 S. N. 057-0202: SBL STA. 190+39.00 TO 196+42.10
 S. N. 057-0202: NBL STA. 189+93.00 TO 195+96.00

