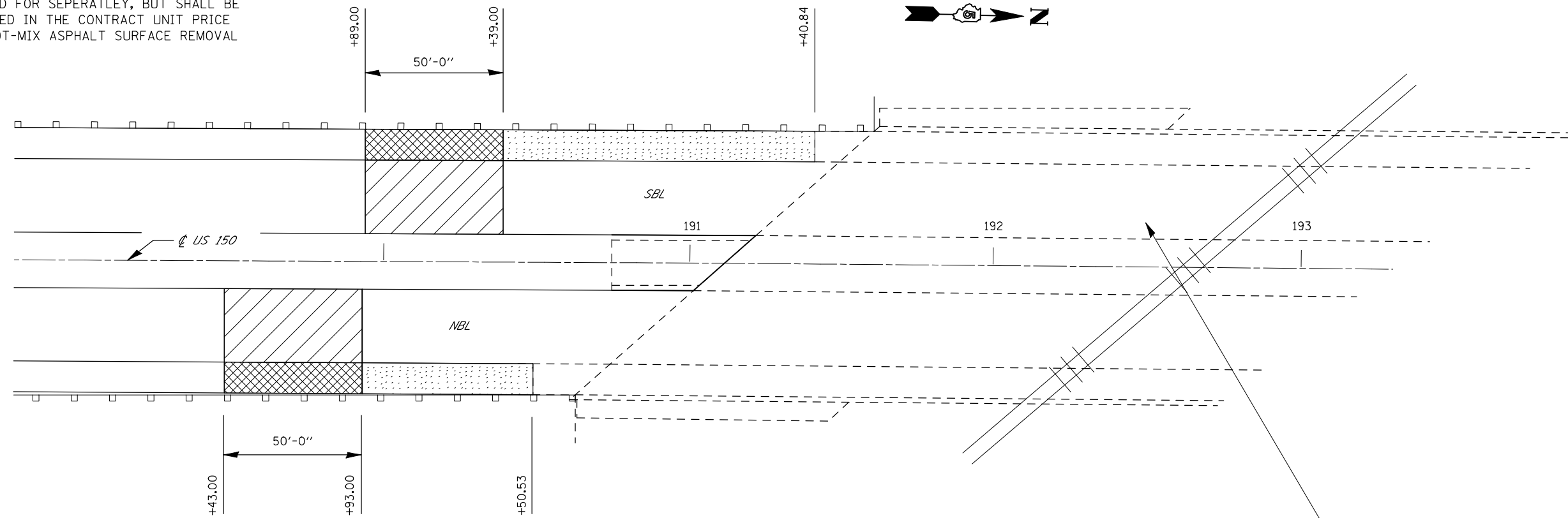


**DETAILS FOR P.C.C. BUTT-JOINTS AT S.N. 057-0202**

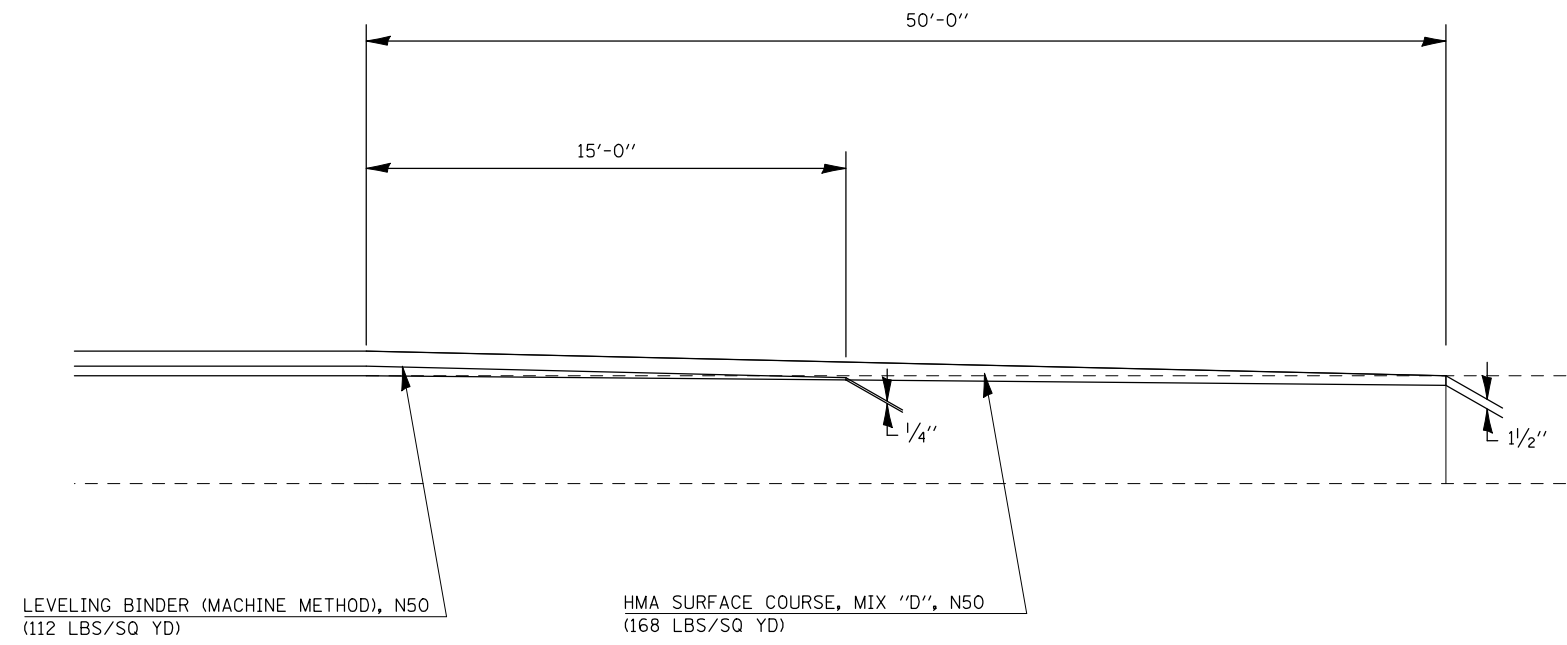
AREAS OF MILLING TRANSITION SHALL NOT BE PAID FOR SEPERATLEY, BUT SHALL BE INCLUDED IN THE CONTRACT UNIT PRICE FOR HOT-MIX ASPHALT SURFACE REMOVAL 1/2"



S.N. 057-0202 195+20.66  
 EXISTING 3 SPAN, STEEL PLATE GIRDER  
 BRIDGE 89'-2" WIDE X 406'-5" LONG  
 OVER NORFOLK & WESTERN RAILROAD  
 & OLD U.S. ROUTE 150

RESURFACING OMISSION:  
 SBL STA. 190+39.00 TO 196+42.10  
 NBL STA. 189+93.00 TO 195+96.00

NOT TO SCALE



LEVELING BINDER (MACHINE METHOD), N50  
 (112 LBS/SQ YD)

HMA SURFACE COURSE, MIX "D", N50  
 (168 LBS/SQ YD)

- P.C.C. SURFACE REMOVAL BUTT-JOINT
- 50' MILLING TRANS. 0" - 1/2"
- HMA SURF. REM. 1/2"

FILE NAME =	USER NAME = shererjm	DESIGNED - JMS	REVISED -	<b>STATE OF ILLINOIS DEPARTMENT OF TRANSPORTATION</b>	<b>P.C.C. SURFACE REMOVAL BUTT-JOINT</b>			F.A.P. RTE.	SECTION	COUNTY	TOTAL SHEETS	SHEET NO.
ct:\pw\work\PWIDOT\SHERERJM\d0109813\d570768-shr-detail.dgn		DRAWN - JMS	REVISED -		676	(9-1,9)RS	MCLEAN	81	66			
PLOT SCALE = 40.0000' / IN.		CHECKED -	REVISED -		CONTRACT NO. 70768			FED. ROAD DIST. NO.	ILLINOIS	FED. AID PROJECT		
PLOT DATE = 2/24/2010		DATE - 051209	REVISED -		SCALE: NA	SHEET NO. 1 OF 1 SHEETS	STA. TO STA.					