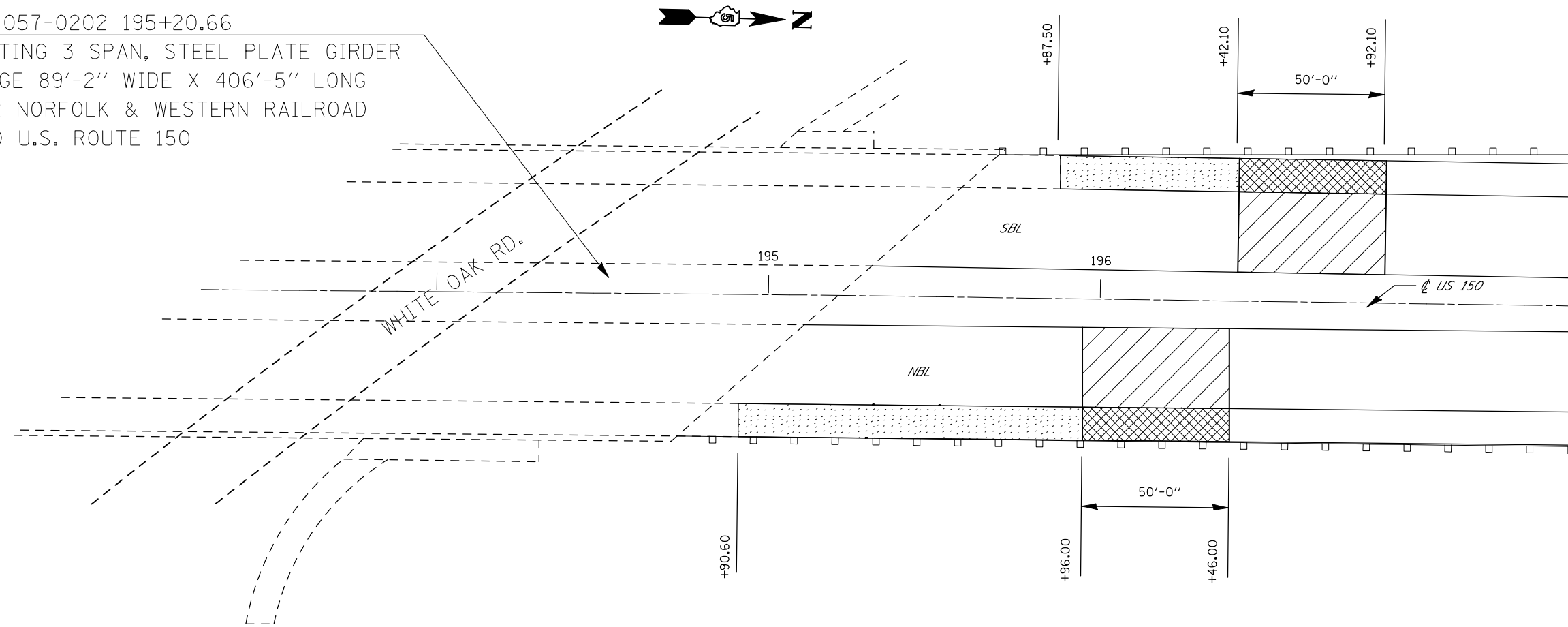


DETAILS FOR P.C.C. BUTT-JOINTS AT 057-0202

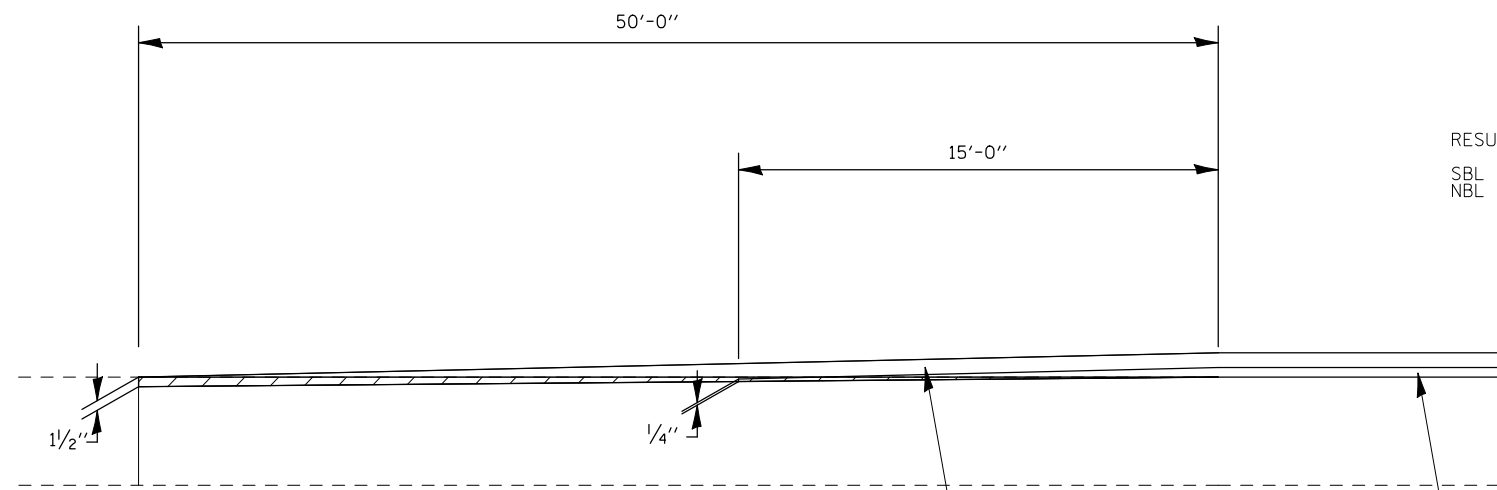
S.N. 057-0202 195+20.66

EXISTING 3 SPAN, STEEL PLATE GIRDER
BRIDGE 89'-2" WIDE X 406'-5" LONG
OVER NORFOLK & WESTERN RAILROAD
& OLD U.S. ROUTE 150



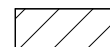
AREAS OF MILLING TRANSITION SHALL NOT
BE PAID FOR SEPERATLEY, BUT SHALL BE
INCLUDED IN THE CONTRACT UNIT PRICE
FOR HOT-MIX ASPHALT SURFACE REMOVAL
1/2"

RESURFACING OMISSION:
SBL STA. 190+39.00 TO 196+42.10
NBL STA. 189+93.00 TO 195+96.00



HMA SURFACE COURSE, MIX "D", N50
168 LBS/SQ YD

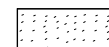
LEVELING BINDER (MACHINE METHOD), N50
112 LBS/SQ YD



P.C.C. SURFACE REMOVAL BUTT-JOINT



50' MILLING TRANS. 0" - 1/2"



HMA SURF. REM. 1/2"

NOT TO SCALE

FILE NAME =	USER NAME = shererjm	DESIGNED - JMS	REVISED -
ct:\pw\work\PWIDOT\SHERERJM\d0109813\d570768-shr-details.dgn		DRAWN - JMS	REVISED -
	PLOT SCALE = 40.0000' / IN.	CHECKED -	REVISED -
	PLOT DATE = 2/24/2010	DATE - 051209	REVISED -

**STATE OF ILLINOIS
DEPARTMENT OF TRANSPORTATION**

P.C.C. SURFACE REMOVAL BUTT-JOINT

SCALE: NA SHEET NO. 1 OF 1 SHEETS STA. TO STA.

F.A.P. RTE.	SECTION	COUNTY	TOTAL SHEETS	SHEET NO.
676	(9-1,9)RS	MCLEAN	81	67
FED. ROAD DIST. NO. ILLINOIS FED. AID PROJECT			CONTRACT NO. 70768	