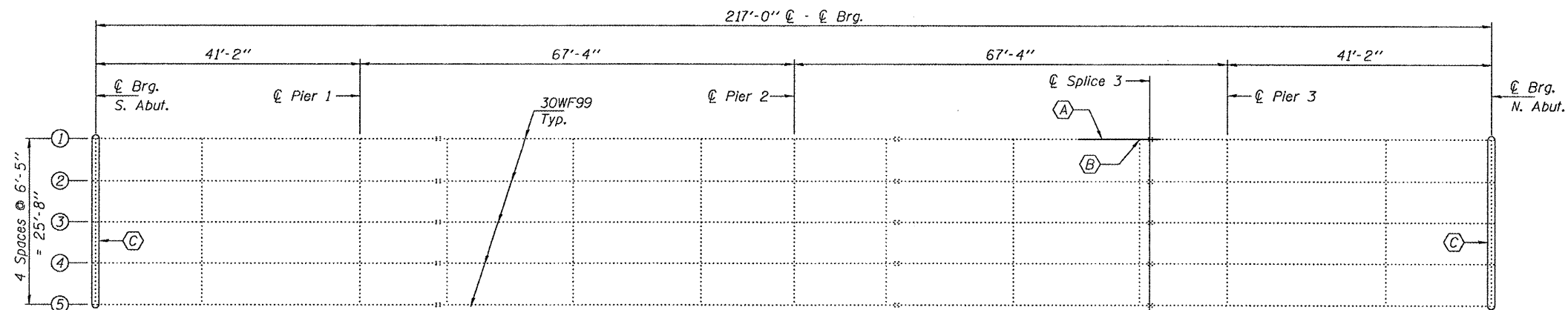
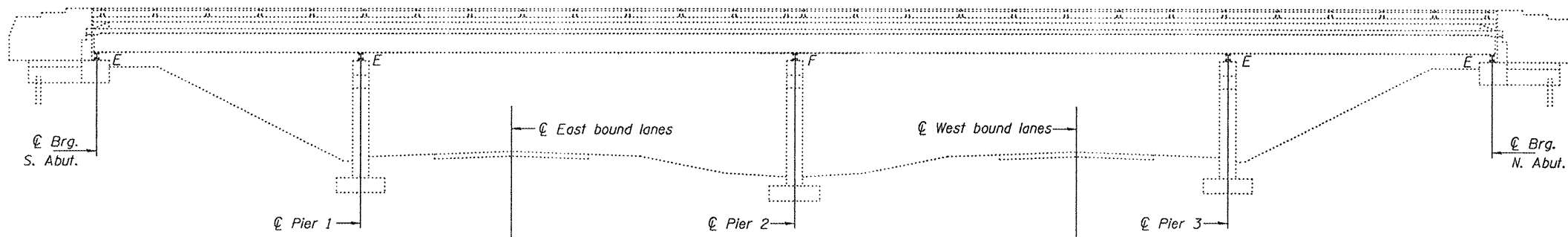


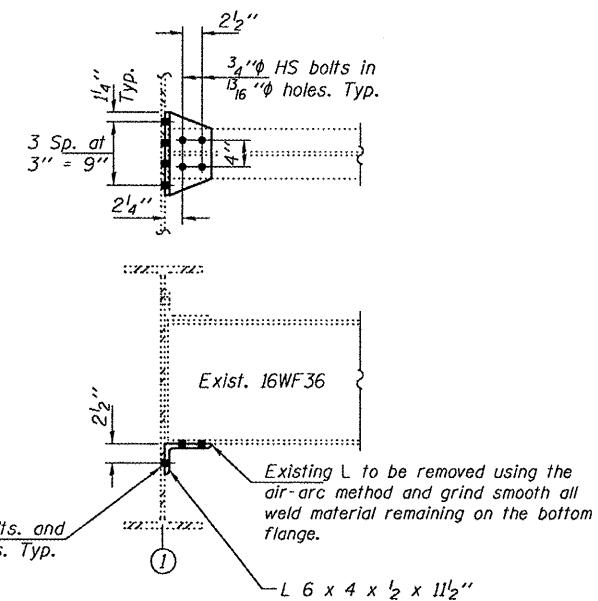
STATE OF ILLINOIS  
DEPARTMENT OF TRANSPORTATION

NOTES

All structural steel shall conform to AASHTO Classification M-270 Gr. 36, unless otherwise noted.  
Plan dimensions and details relative to existing plans are subject to nominal construction variations. The Contractor shall field verify existing dimensions and details affecting new construction and make necessary approved adjustments prior to construction or ordering of materials. Such variations shall not be cause for additional compensation for a change in scope of the work, however, the Contractor will be paid for the quantity actually furnished at the unit price bid for the work.  
Cost of removal and re-installation of all members necessary to complete the work as detailed on the plans and as specified in the Special Provisions shall be included with Structural Steel Repair.  
Existing structural steel that will be in contact with new structural steel shall be cleaned and painted prior to erection as required by the Special Provision "Cleaning and Painting Contact Surface Areas of Existing Steel Structures".  
All structural steel shall be shop painted with the inorganic zinc rich primer per AASHTO M300, Type 1. Cost included with Structural Steel Repair.  
The existing structural steel coating contains lead. The Contractor shall take appropriate precautions to deal with the presence of lead on this project.  
Load carrying components designated "NTR" shall conform to the Supplemental Requirements for Notch Toughness, Zone 2.



- (A) Straighten & strengthen existing beam.
- (B) Replace bottom clip angle.
- (C) Replace abutment bearings.

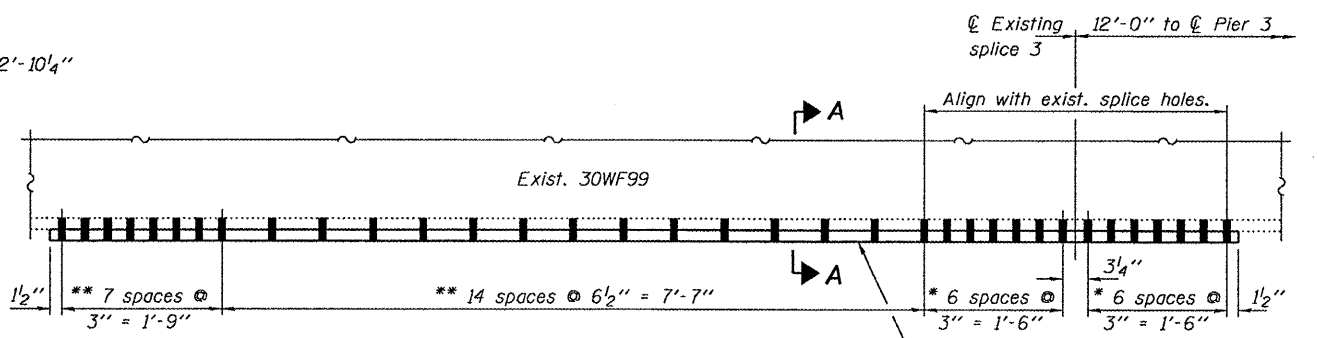
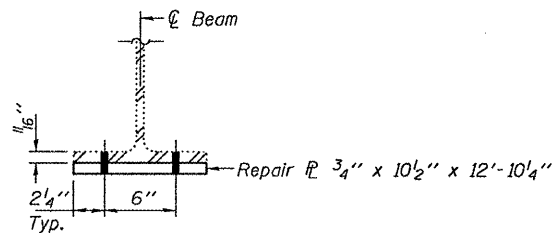


REPAIR B  
CLIP ANGLE REPLACEMENT

BILL OF MATERIAL

ITEM	UNIT	QUANTITY
Structural Steel Repair	Pound	430
Beam Straightening	L.S.	1

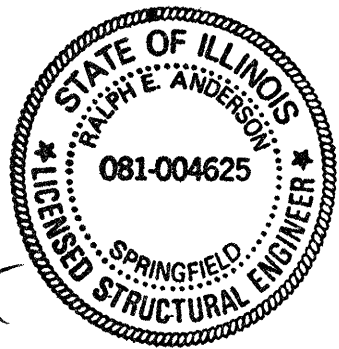
Notes:  
Fasteners shall be high strength bolts.  
Holes for Repair A shall be 1/16" for 7/8" bolts. Holes for Repair B shall be 1/16" for 3/4" bolts.  
Existing bolts shall not be re-used.  
The cost of field drilling required for installation of the steel members is included with Structural Steel Repair.  
Traffic on CH 19 shall be shifted away from beam 1 for the duration of Repair A.



\* Use existing holes in bottom flange as template to field drill holes in new plate.  
\*\* Use holes in new plate as template to field drill holes in bottom flange plate.

PLAN AND ELEVATION  
CH 19 OVER I-72  
SN 010-0146

SHEET NO. 1 3 SHEETS	F.A.I. RTE. 72	SECTION (10-71HB)BDR,BJR	COUNTY CHAMPAIGN	TOTAL SHEETS 14	SHEET NO. 7
	FED. ROAD DIST. NO. ILLINOIS FED. AID PROJECT			CONTRACT NO. 70865	



DESIGNED: Victor H. Volz  
CHECKED: Adrian T. Hallway  
DRAWN: balva  
CHECKED: VHV ATH

APRIL 13, 2010  
EXAMINED: [Signature]  
PASSED: [Signature]

EXPIRES 11-30-2010