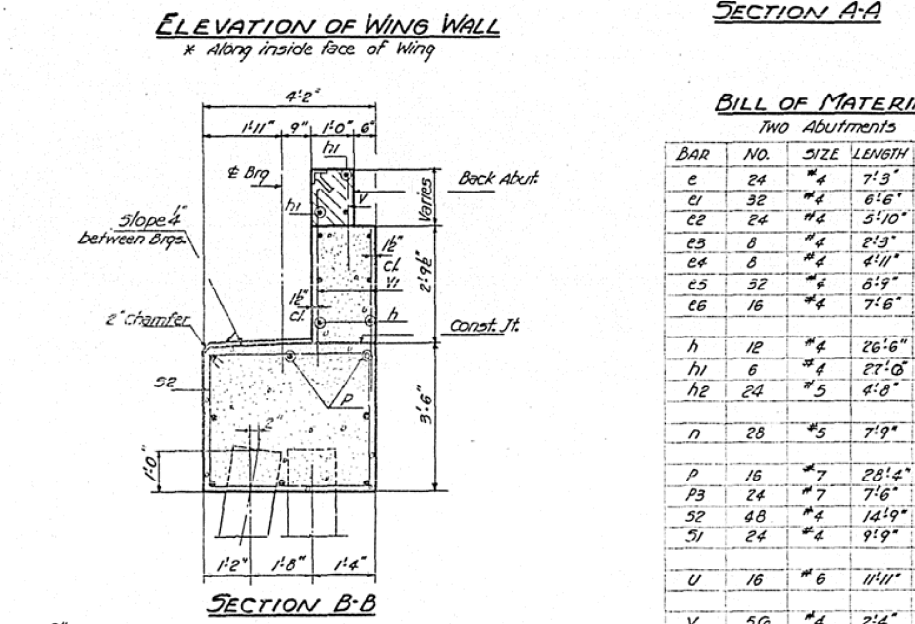
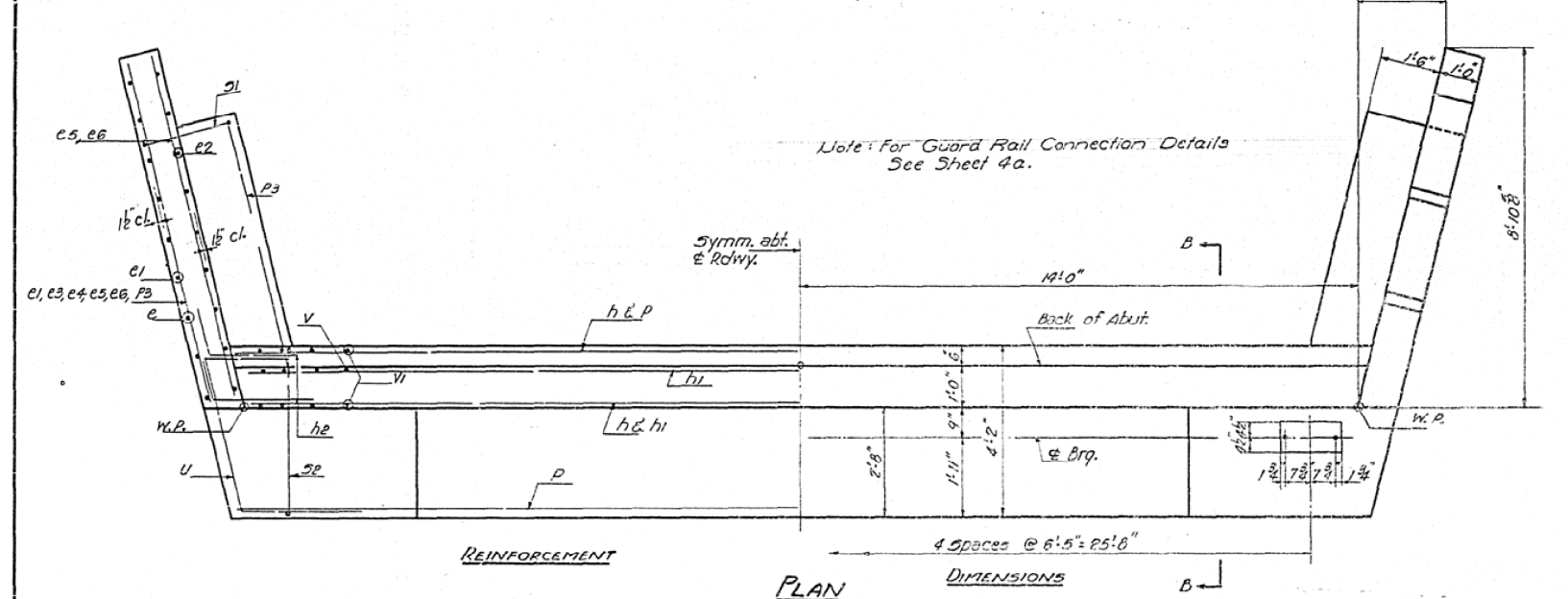
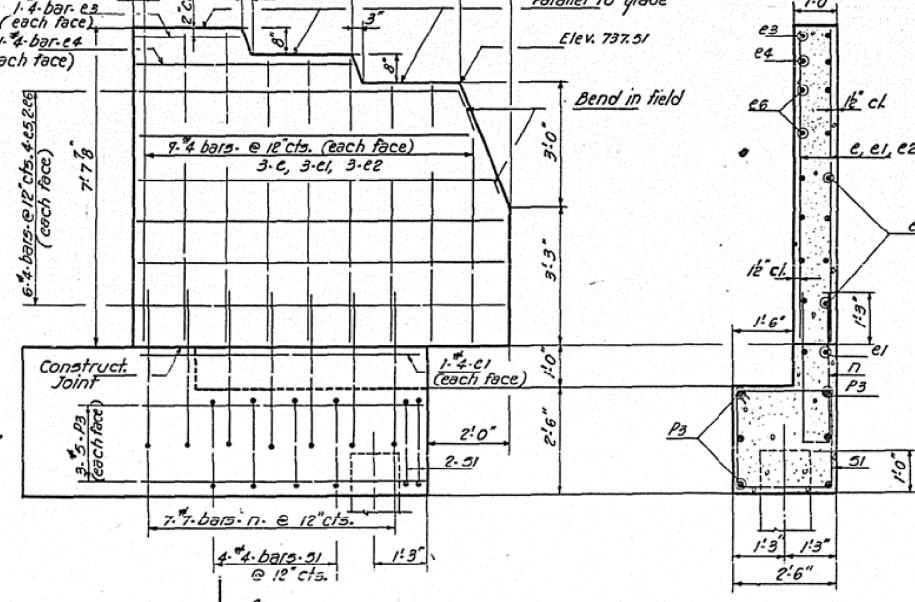
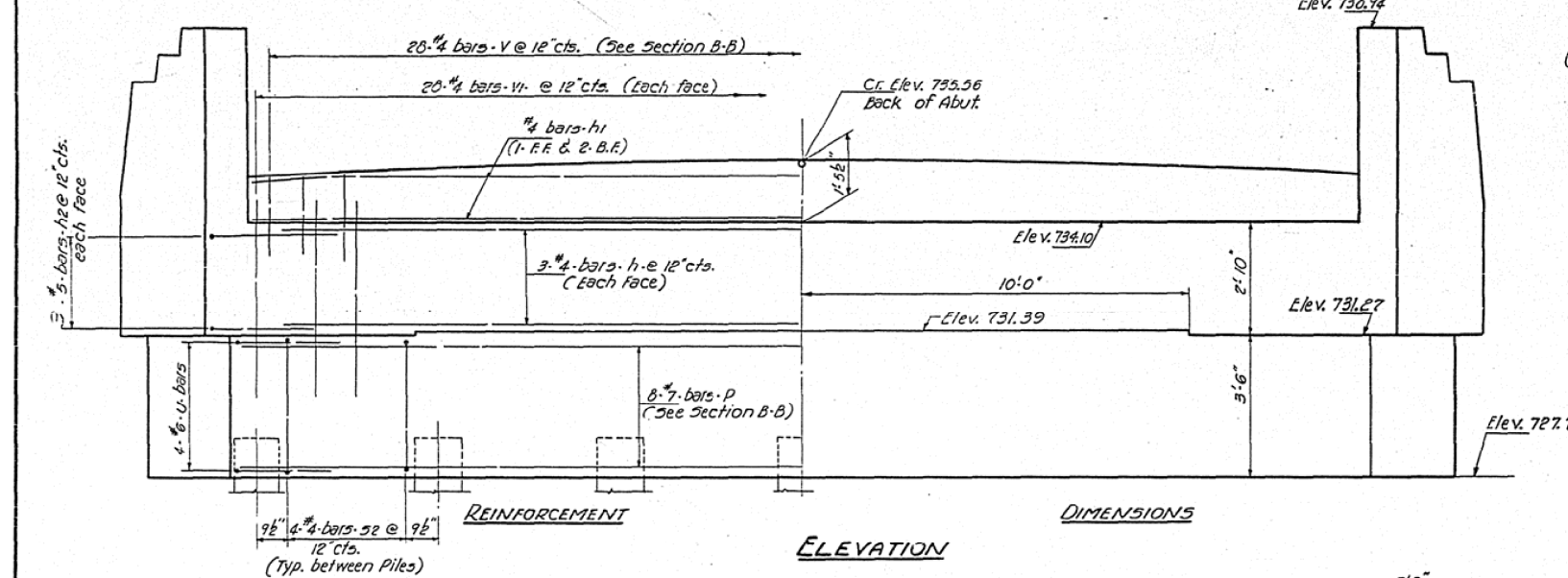


AS-BUILT PLANS FOR INFORMATION ONLY

STATE OF ILLINOIS
DEPARTMENT OF PUBLIC WORKS & BUILDINGS
DIVISION OF HIGHWAYS

ROUTE NO.	FED. AID PROJ. NO.	COUNTY	TOTAL SHEETS	SHEET NO.
10-71HB	37	Champaign	14	13
SHEET NO. 5 10 SHEETS				



BILL OF MATERIAL Two Abutments

BAR NO.	SIZE	LENGTH	SHAPE
c	#4	7'3"	—
c1	#4	6'6"	—
c2	#4	5'10"	—
c3	#4	2'3"	—
c4	#4	4'11"	—
c5	#4	6'9"	—
c6	#4	7'6"	—
h	#4	26'6"	—
h1	#4	27'0"	—
h2	#5	4'8"	—
n	#5	7'9"	U
p	#7	28'4"	—
p3	#7	7'6"	—
sp	#8	14'9"	□
si	#4	9'9"	□
u	#6	11'11"	—
v	#4	2'2"	—
vi	#4	4'9"	—

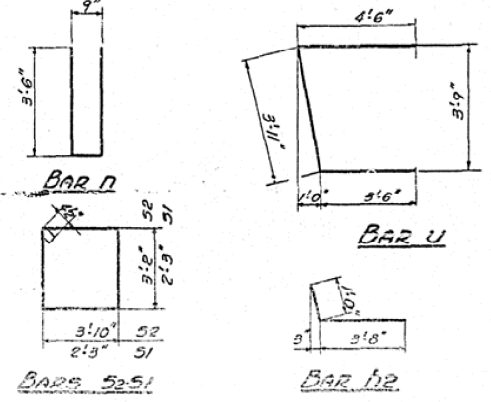
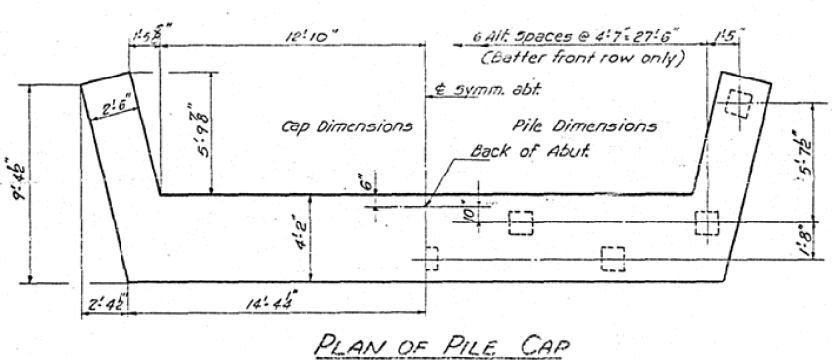
Class-X Concrete Cu. Yds. 55.0
Reinforcement Bars Lbs. 3980
Concrete Piles Lin. Ft. 595
Test Piles (Concrete) Each 1

PILE DATA

Type	Concrete
Capacity	30 Tons Min.
Est. Length	35 Ft.
No. Req'd.	18 (includes 1 Test Pile)

DESIGNED	PH Ferguson	EXAMINED	M.G. Baumann
CHECKED	R. Howard	PASSED	C. Stewart
DRAWN	PHH M. Miller	APPROVED	R.L. Bastian
CHECKED	RL		

MARCH 29 1962



ABUTMENTS
COUNTY HIGHWAY 19 OVER F.A. RT. 11
F.A. RT. 11 - SEC. 10-71HB
CHAMPAIGN COUNTY
STATION 1780+09.74