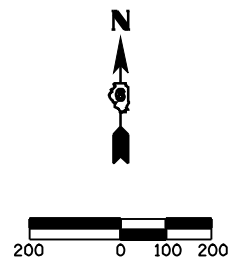
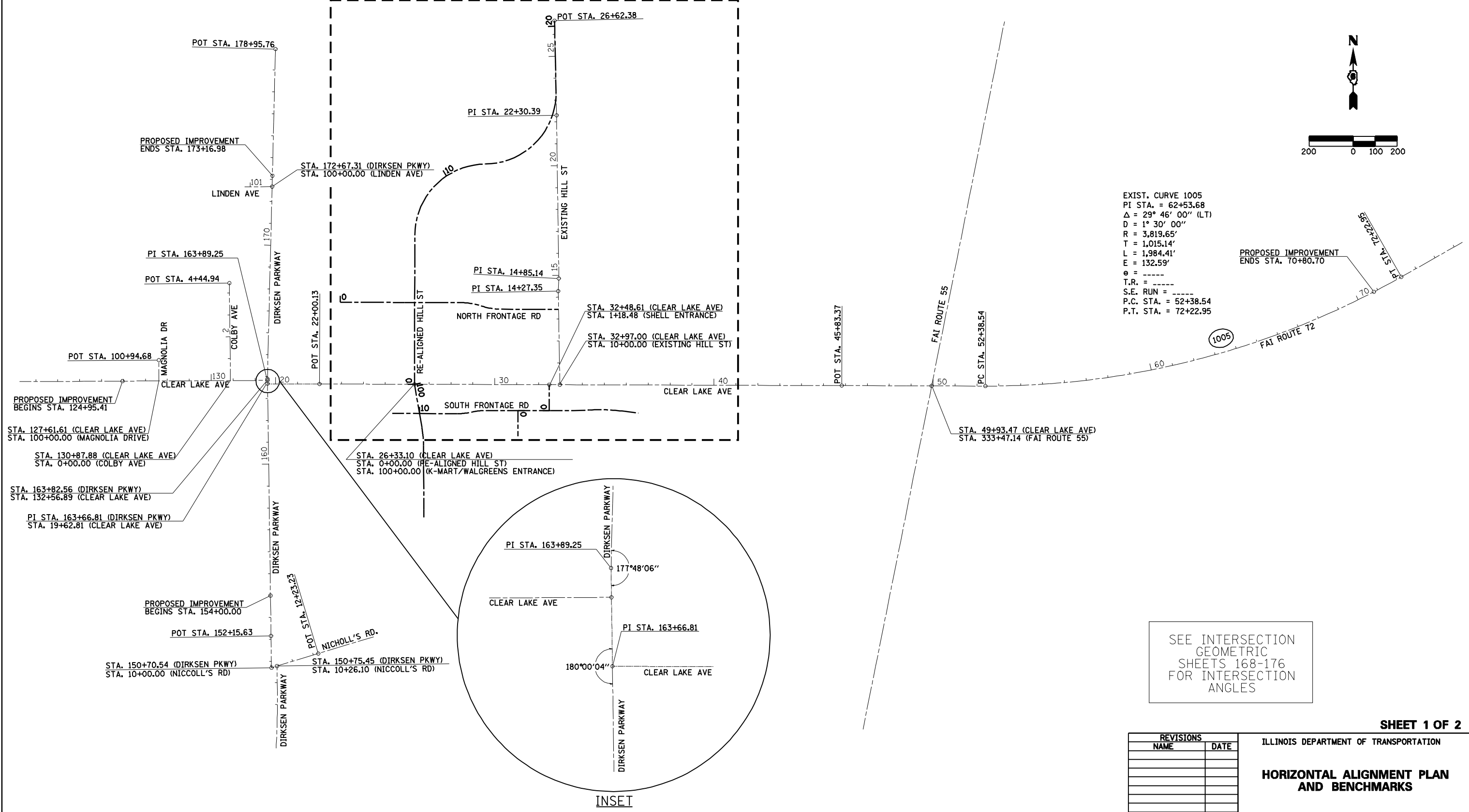


\* F.A.P. 72, F.A.P. 67, F.A.P. 75 & F.A.P. 668  
 \*\* D-6 SPFLD-CLRLAKE DIRKSEN 2002

F.A.P. RTE.	SECTION	COUNTY	TOTAL SHEETS	SHEET NO.
*	**	SANGAMON	363	30
STA. 124+95.41		TO STA. 130+00.00		
FED. ROAD DIST. NO.		ILLINOIS FED. AID PROJECT		
CONTRACT NO. 72088				

SEE SHEET 2 OF 2



EXIST. CURVE 1005  
 PI STA. = 62+53.68  
 Δ = 29° 46' 00" (LT)  
 D = 1° 30' 00"  
 R = 3,819.65'  
 T = 1,015.14'  
 L = 1,984.41'  
 E = 132.59'  
 e = -----  
 T.R. = -----  
 S.E. RUN = -----  
 P.C. STA. = 52+38.54  
 P.T. STA. = 72+22.95

SEE INTERSECTION  
 GEOMETRIC  
 SHEETS 168-176  
 FOR INTERSECTION  
 ANGLES

SHEET 1 OF 2

REVISIONS	
NAME	DATE

ILLINOIS DEPARTMENT OF TRANSPORTATION  
**HORIZONTAL ALIGNMENT PLAN  
 AND BENCHMARKS**  
 SCALE: 1"=200'  
 DATE 7/13/05  
 DRAWN BY NJV  
 CHECKED BY PBB