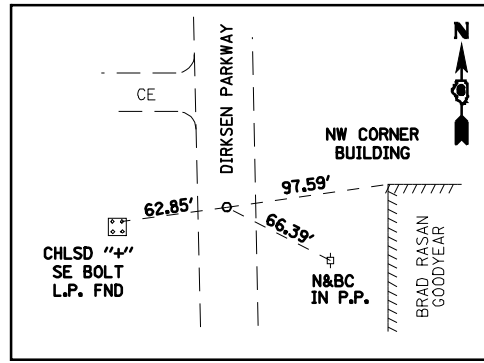
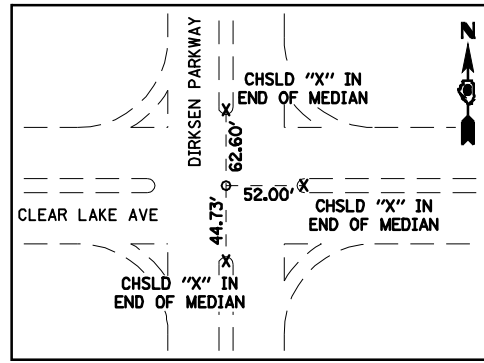


• F.A.I. 72, F.A.P. 67, F.A.P. 75 & F.A.P. 668
 •• D-6 SPFLD-CLRLAKE DIRKSEN 2002

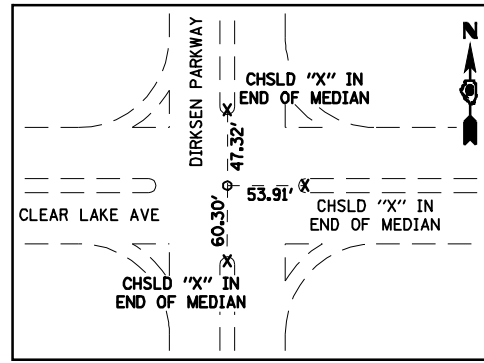
F.A.P. RTE.	SECTION	COUNTY	TOTAL SHEETS	SHEET NO.
•	••	SANGAMON	363	32
STA. 124+95.41		TO STA. 130+00.00		
FED. ROAD DIST. NO.	ILLINOIS	FED. AID PROJECT		
CONTRACT NO. 72088				



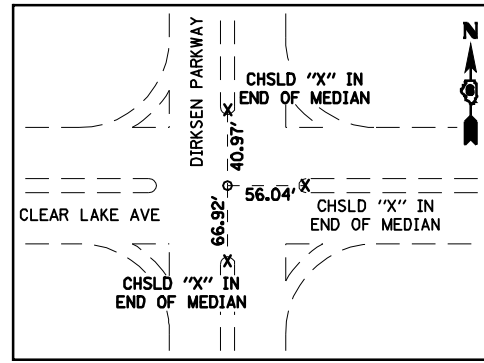
POT STA. 178+95.76 (DIRKSEN PARKWAY)
 (NAIL IN CHSLD "X")



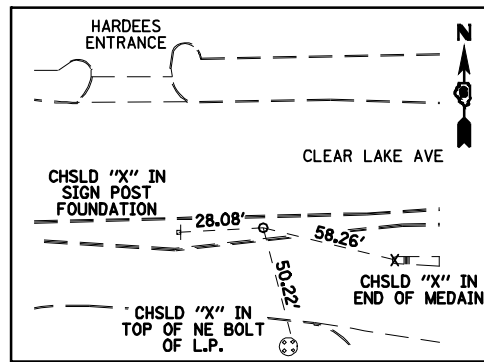
POT STA. 163+66.81 (DIRKSEN PARKWAY)
 POT STA. 19+62.81 (CLEAR LAKE AVE)
 (PK IN CHSLD "X")



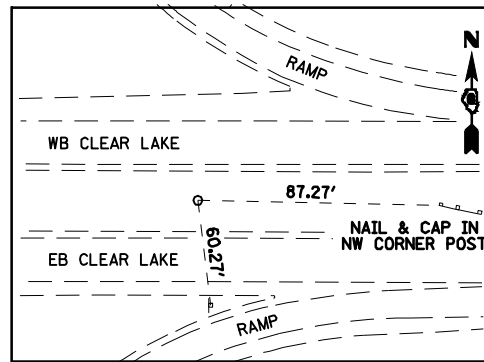
POT STA. 163+82.56 (DIRKSEN PARKWAY)
 POT STA. 132+56.89 (CLEAR LAKE AVE)
 (ALUM DISK (SECTION CORNER))



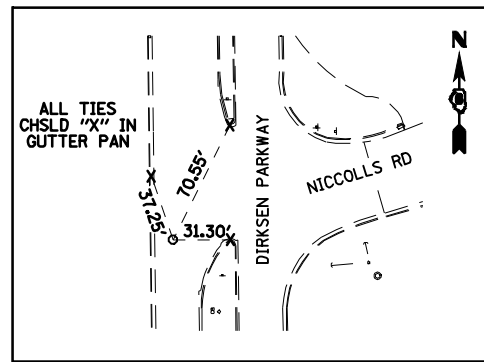
PI STA. 163+89.25 (DIRKSEN PARKWAY)
 (PK IN CHSLD "X")



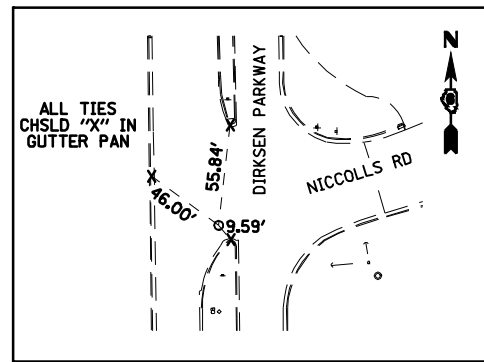
POT STA. 22+00.13 (CLEAR LAKE AVE)
 (STAR DRILL IN CHSLD "□")



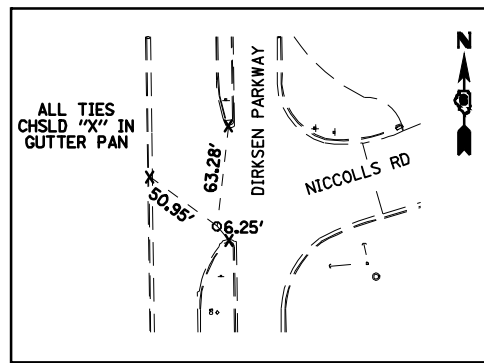
POT STA. 45+83.37 (CLEAR LAKE AVE)
 (#4 REBAR W/ CAP FLUSH)



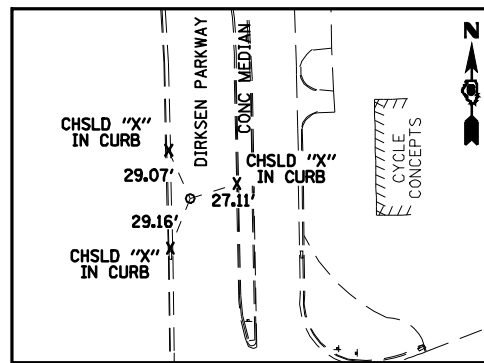
POT STA. 150+70.54 (DIRKSEN PARKWAY) =
 STA 10+00.00 NICCOLLS RD
 (STAR DRILL W/ CHSLD "X")



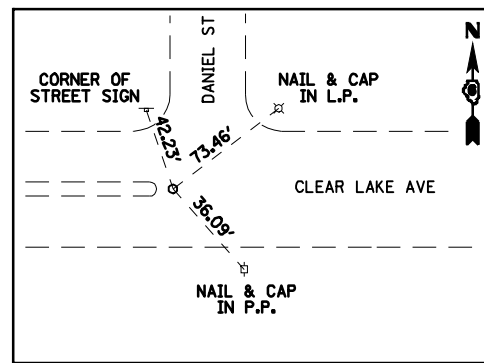
POT STA. 150+75.45 (DIRKSEN PARKWAY) =
 STA 10+26.10 NICCOLLS RD
 (60D SPIKE NAIL IN CRACK)



POT STA. 150+67.91 (DIRKSEN PARKWAY) =
 (#3 REBAR IN CRACK 1" BELOW PAVEMENT)



POT STA. 152+15.54 (DIRKSEN PARKWAY)
 (DRILLHOLE IN CHSLD "X")



POT STA. 113+84.46 (CLEAR LAKE AVE)
 (PK IN CHSLD "X")

REVISIONS	
NAME	DATE

ILLINOIS DEPARTMENT OF TRANSPORTATION

CONTROL TIES

SCALE: 1"=200'
 DATE 7/13/05

DRAWN BY NJV
 CHECKED BY PBB