


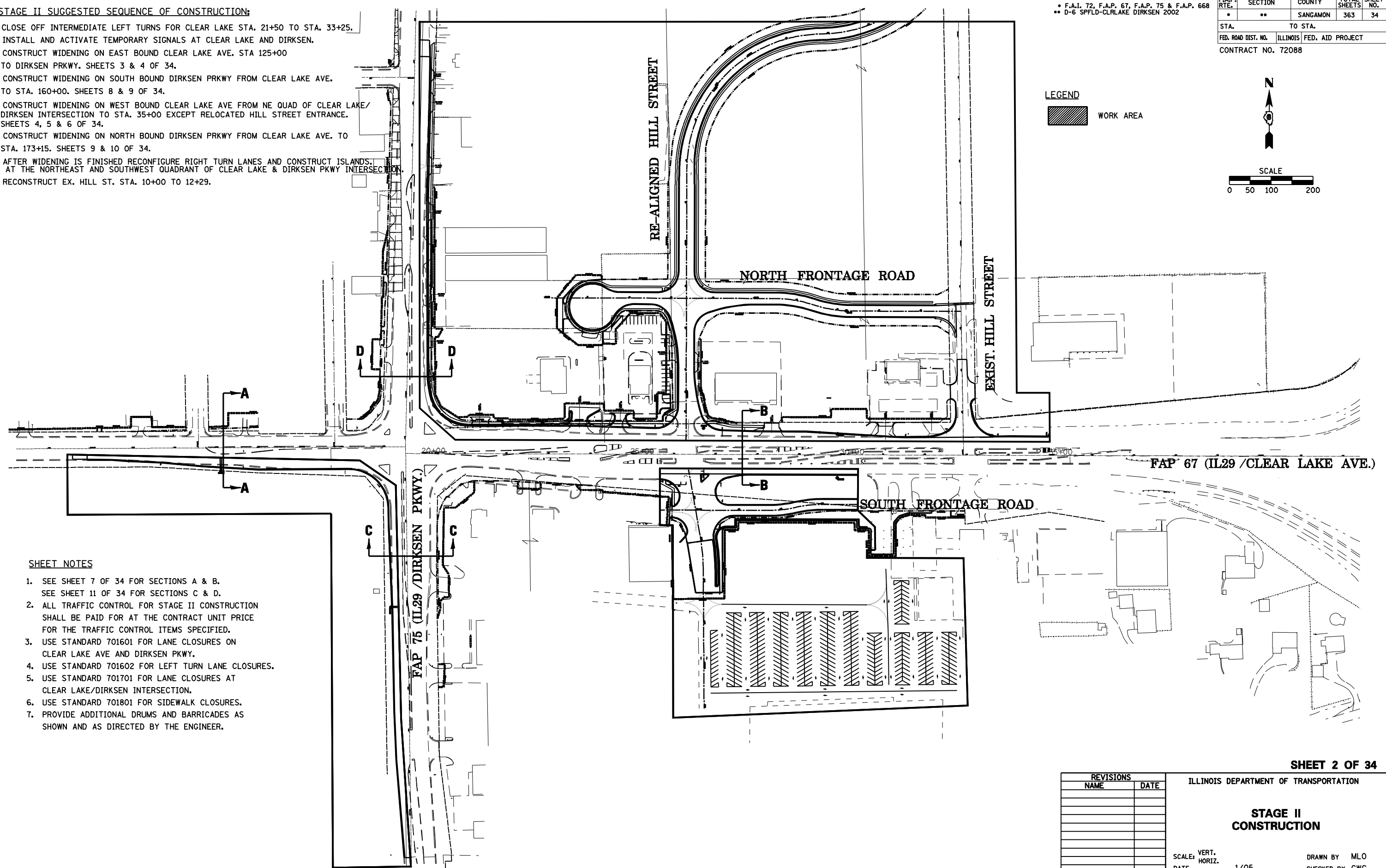
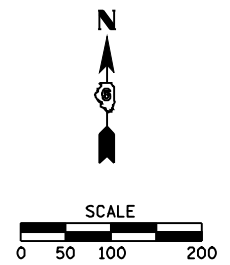
STAGE II SUGGESTED SEQUENCE OF CONSTRUCTION:

1. CLOSE OFF INTERMEDIATE LEFT TURNS FOR CLEAR LAKE STA. 21+50 TO STA. 33+25.
2. INSTALL AND ACTIVATE TEMPORARY SIGNALS AT CLEAR LAKE AND DIRKSEN.
3. CONSTRUCT WIDENING ON EAST BOUND CLEAR LAKE AVE. STA 125+00 TO DIRKSEN PRKWY. SHEETS 3 & 4 OF 34.
4. CONSTRUCT WIDENING ON SOUTH BOUND DIRKSEN PRKWY FROM CLEAR LAKE AVE. TO STA. 160+00. SHEETS 8 & 9 OF 34.
5. CONSTRUCT WIDENING ON WEST BOUND CLEAR LAKE AVE FROM NE QUAD OF CLEAR LAKE/DIRKSEN INTERSECTION TO STA. 35+00 EXCEPT RELOCATED HILL STREET ENTRANCE. SHEETS 4, 5 & 6 OF 34.
6. CONSTRUCT WIDENING ON NORTH BOUND DIRKSEN PRKWY FROM CLEAR LAKE AVE. TO STA. 173+15. SHEETS 9 & 10 OF 34.
7. AFTER WIDENING IS FINISHED RECONFIGURE RIGHT TURN LANES AND CONSTRUCT ISLANDS. AT THE NORTHEAST AND SOUTHWEST QUADRANT OF CLEAR LAKE & DIRKSEN PKWY INTERSECTION.
8. RECONSTRUCT EX. HILL ST. STA. 10+00 TO 12+29.

• F.A.I. 72, F.A.P. 67, F.A.P. 75 & F.A.P. 668
 ** D-6 SPFLD-CLRLAKE DIRKSEN 2002

F.A.P. RTE.	SECTION	COUNTY	TOTAL SHEETS	SHEET NO.
*	**	SANGAMON	363	34
STA.		TO STA.		
FED. ROAD DIST. NO.		ILLINOIS	FED. AID PROJECT	
CONTRACT NO. 72088				

LEGEND
 WORK AREA



SHEET NOTES

1. SEE SHEET 7 OF 34 FOR SECTIONS A & B.
SEE SHEET 11 OF 34 FOR SECTIONS C & D.
2. ALL TRAFFIC CONTROL FOR STAGE II CONSTRUCTION SHALL BE PAID FOR AT THE CONTRACT UNIT PRICE FOR THE TRAFFIC CONTROL ITEMS SPECIFIED.
3. USE STANDARD 701601 FOR LANE CLOSURES ON CLEAR LAKE AVE AND DIRKSEN PKWY.
4. USE STANDARD 701602 FOR LEFT TURN LANE CLOSURES.
5. USE STANDARD 701701 FOR LANE CLOSURES AT CLEAR LAKE/DIRKSEN INTERSECTION.
6. USE STANDARD 701801 FOR SIDEWALK CLOSURES.
7. PROVIDE ADDITIONAL DRUMS AND BARRICADES AS SHOWN AND AS DIRECTED BY THE ENGINEER.

SHEET 2 OF 34

REVISIONS	
NAME	DATE

ILLINOIS DEPARTMENT OF TRANSPORTATION

STAGE II CONSTRUCTION

SCALE: VERT. 1/05
 HORIZ. DATE

DRAWN BY MLO
 CHECKED BY CWG