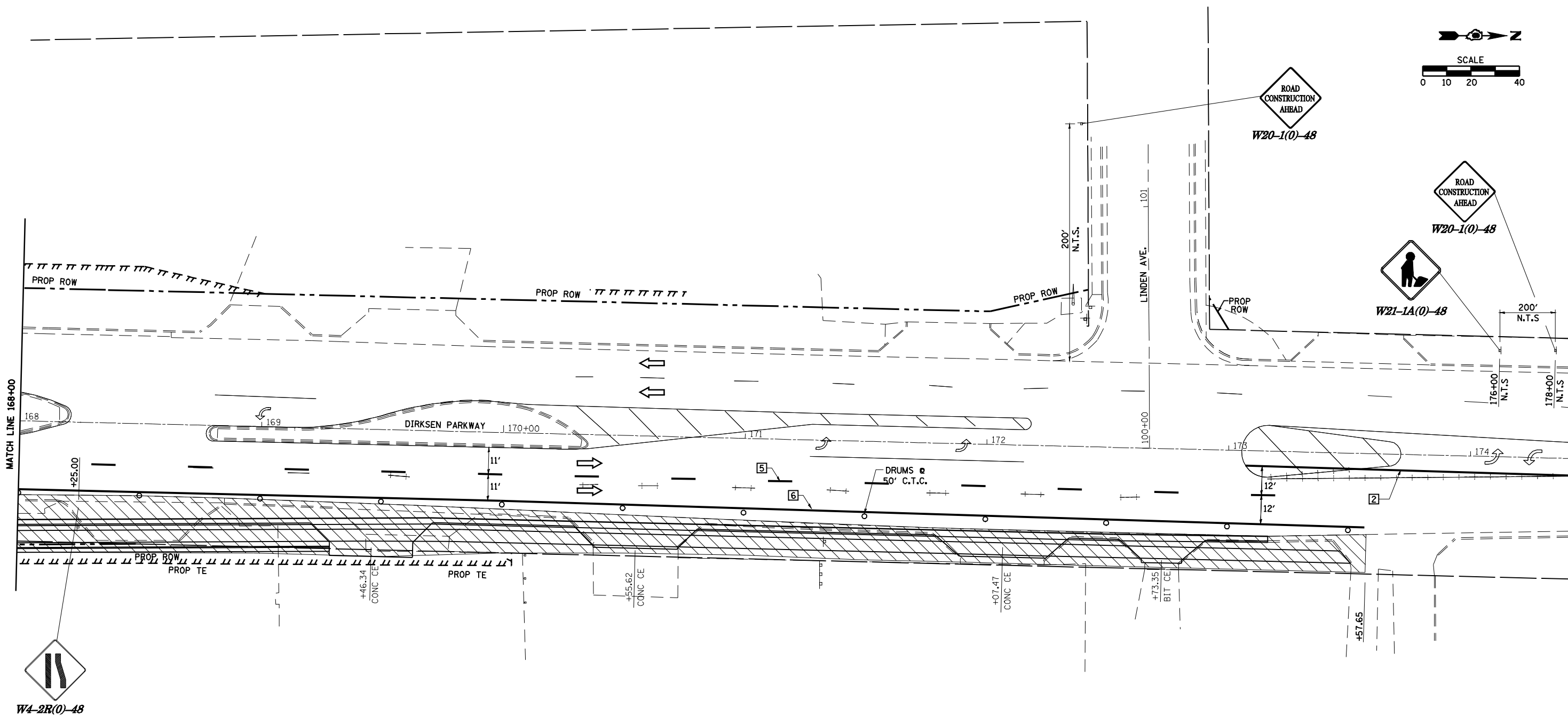
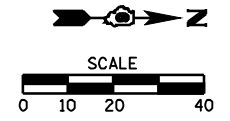


F.A.P. 72, F.A.P. 67, F.A.P. 75 & F.A.P. 668  
 D-6 SPFLD-CLRLAKE DIRKSEN 2002

F.A.P. RTE.	SECTION	COUNTY	TOTAL SHEETS	SHEET NO.
*	**	SANGAMON	363	42
STA.		TO STA.		
FED. ROAD DIST. NO.	ILLINOIS	FED. AID PROJECT		
CONTRACT NO. 72088				



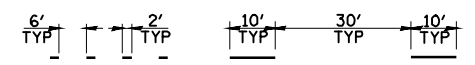
**LEGEND**

	WORK AREA		PAVEMENT MARKING TO BE REMOVED
	SIGN ON PORTABLE OR PERMANENT SUPPORT		TEMPORARY PAVEMENT MARKING
	DRUM WITH MONO DIRECTIONAL LIGHT		PAVEMENT MARKING TO REMAIN
	DRUM WITH MONO DIRECTIONAL FLASHING LIGHT		ITEM [4] DOUBLE YELLOW (NARROW)
	TYPE III BARRICADE		
	TRAFFIC FLOW DIRECTION		

**TEMPORARY PAVEMENT MARKING LEGEND**

1	4" SKIP-DASH YELLOW
2	4" SOLID YELLOW
3	4" DIAGONAL YELLOW
4	4" DOUBLE YELLOW NARROW
5	4" SKIP-DASH WHITE
6	4" SOLID WHITE
7	24" STOP BAR WHITE
8	4" DIAGONAL WHITE
9	LETTERS & SYMBOLS

**TRAFFIC CONTROL STANDARDS**  
701602



REVISIONS	
NAME	DATE

ILLINOIS DEPARTMENT OF TRANSPORTATION

**STAGE II CONSTRUCTION**

SCALE: VERT. \_\_\_\_\_  
 DATE: 1/05 HORIZ. \_\_\_\_\_

DRAWN BY: NJV  
 CHECKED BY: CWG