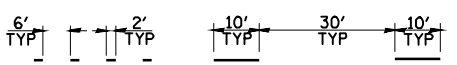


LEGEND

- WORK AREA
- SIGN ON PORTABLE OR PERMANENT SUPPORT
- DRUM WITH MONO DIRECTIONAL LIGHT
- DRUM WITH MONO DIRECTIONAL FLASHING LIGHT
- TYPE III BARRICADE
- PAVEMENT MARKING TO BE REMOVED
- TEMPORARY PAVEMENT MARKING
- PAVEMENT MARKING TO REMAIN
- TRAFFIC FLOW DIRECTION
- ITEM 4 DOUBLE YELLOW (NARROW)



TEMPORARY PAVEMENT MARKING LEGEND

- 1 4" SKIP-DASH YELLOW
- 2 4" SOLID YELLOW
- 3 4" DIAGONAL YELLOW
- 4 4" DOUBLE YELLOW NARROW
- 5 4" SKIP-DASH WHITE
- 6 4" SOLID WHITE
- 7 24" STOP BAR WHITE
- 8 4" DIAGONAL WHITE

TRAFFIC CONTROL STANDARDS

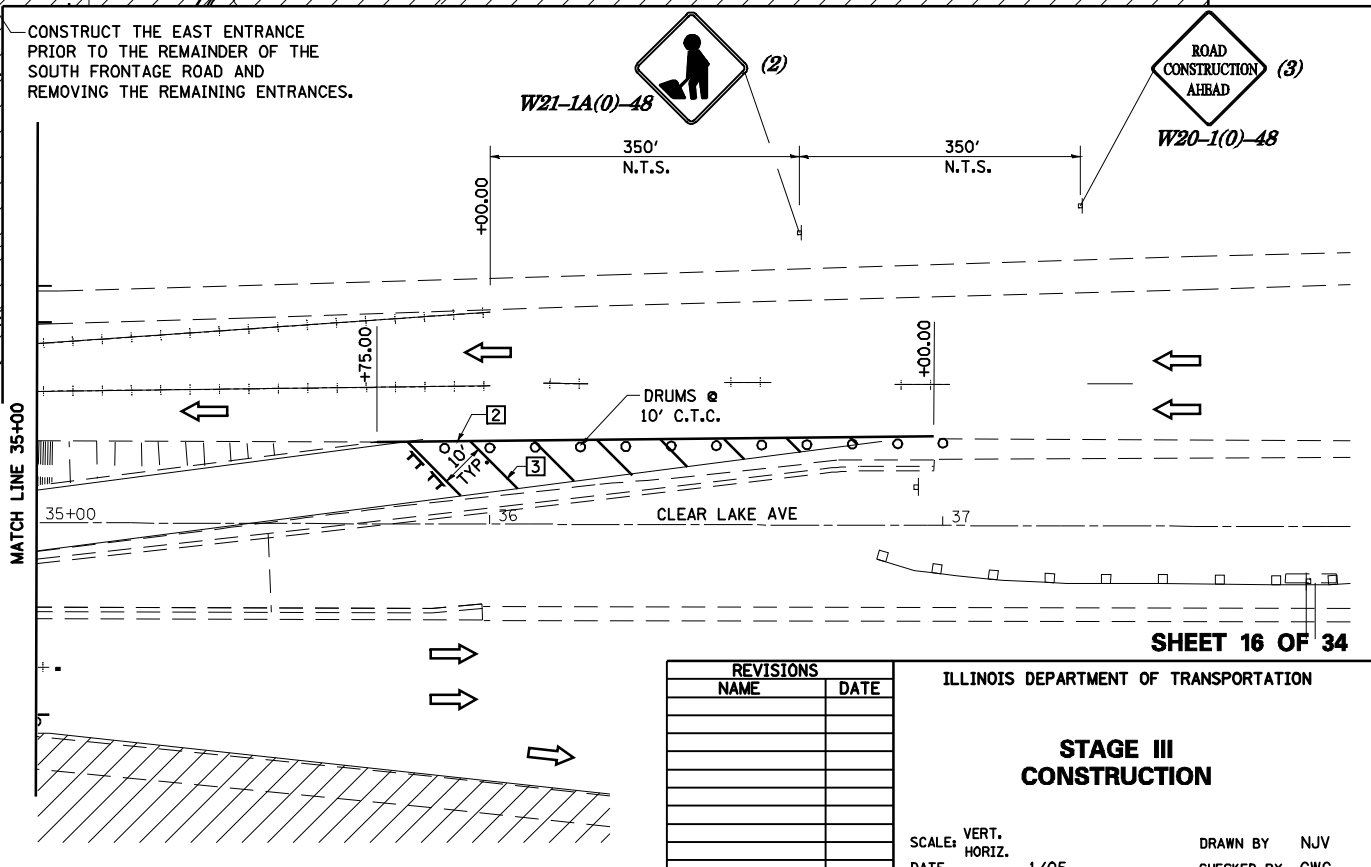
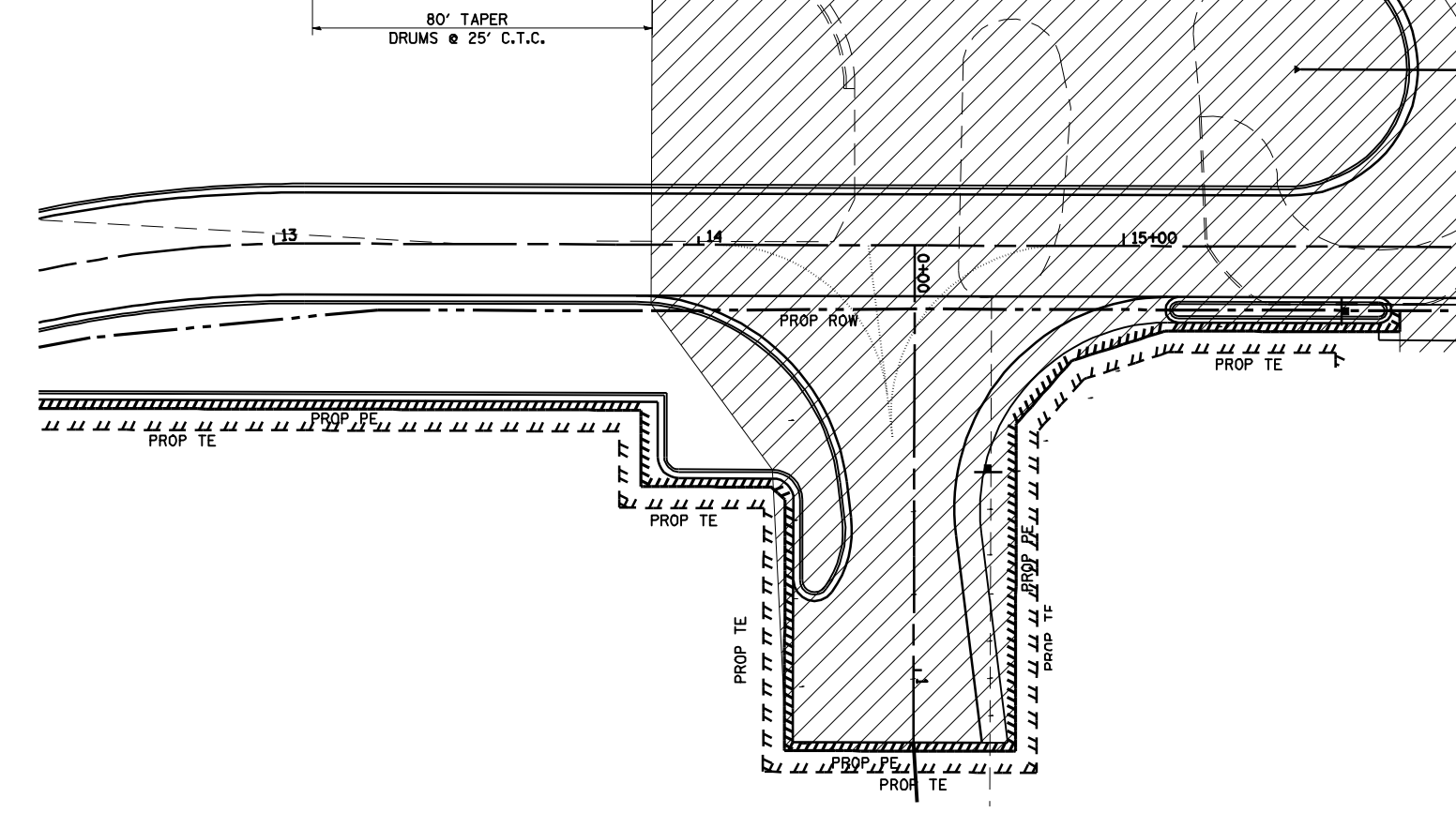
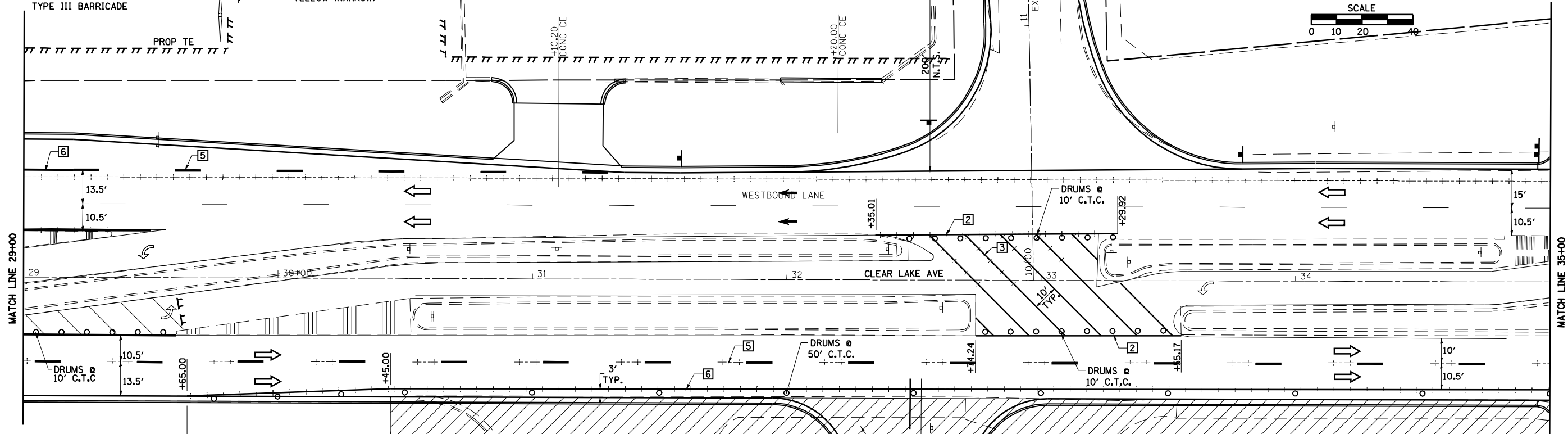
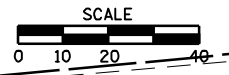
701602



W20-1(0)-48

F.A.P. 72, F.A.P. 67, F.A.P. 75 & F.A.P. 668
 D-6 SPFLD-CLRLAKE DIRKSEN 2002

F.A.P. RTE.	SECTION	COUNTY	TOTAL SHEETS	SHEET NO.
*	**	SANGAMON	363	48
STA. TO STA.		ILLINOIS FED. AID PROJECT		
FED. ROAD DIST. NO.		CONTRACT NO. 72088		



REVISIONS	
NAME	DATE

ILLINOIS DEPARTMENT OF TRANSPORTATION

STAGE III CONSTRUCTION

SCALE: VERT. HORIZ. DATE 1/05

DRAWN BY NJV
 CHECKED BY CWG