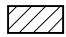




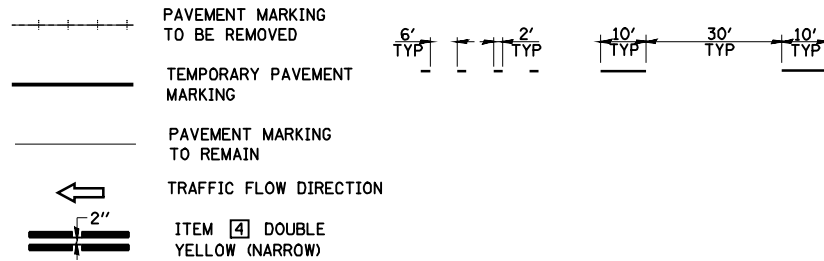


**LEGEND**

	WORK AREA
	SIGN ON PORTABLE OR PERMANENT SUPPORT
	DRUM WITH MONO DIRECTIONAL LIGHT
	DRUM WITH MONO DIRECTIONAL FLASHING LIGHT
	TYPE III BARRICADE



**TEMPORARY PAVEMENT MARKING LEGEND**

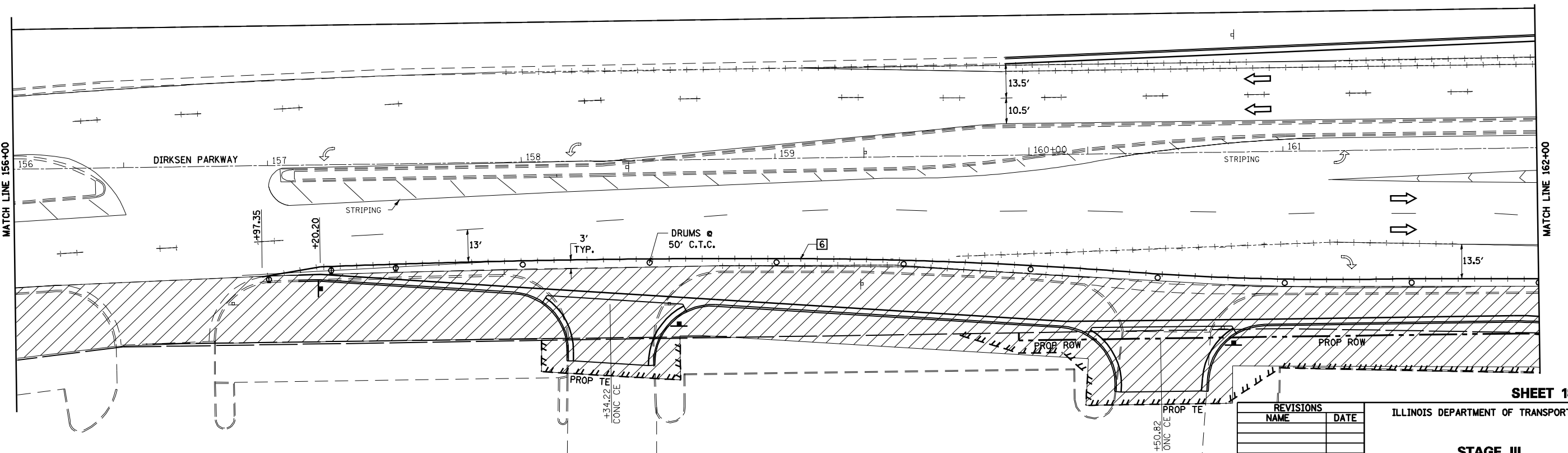
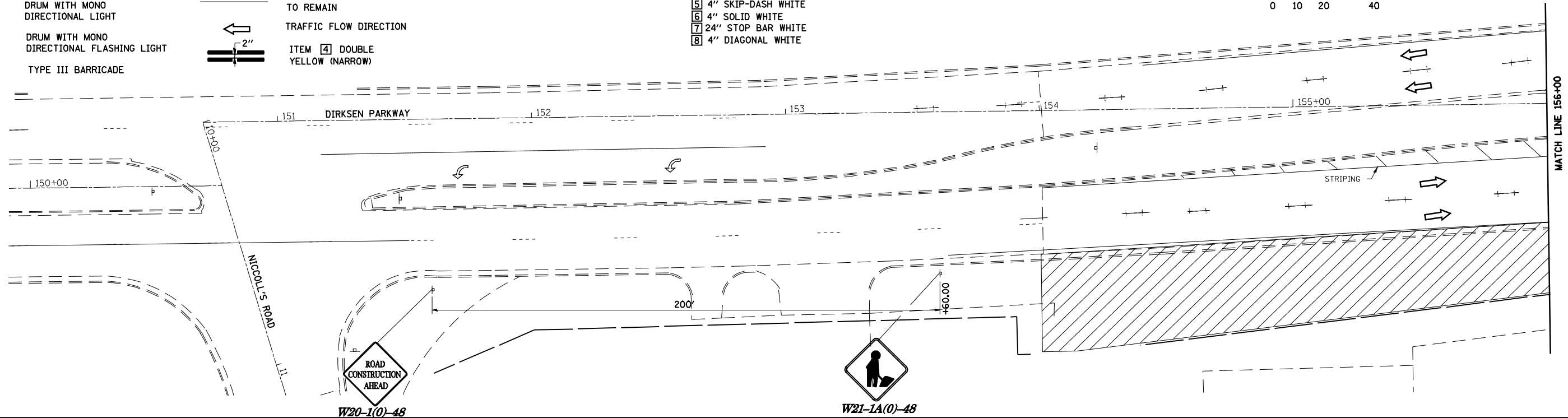
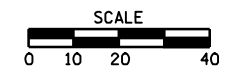
- 1 4" SKIP-DASH YELLOW
- 2 4" SOLID YELLOW
- 3 4" DIAGONAL YELLOW
- 4 4" DOUBLE YELLOW NARROW
- 5 4" SKIP-DASH WHITE
- 6 4" SOLID WHITE
- 7 24" STOP BAR WHITE
- 8 4" DIAGONAL WHITE

**TRAFFIC CONTROL STANDARDS**

701602

• F.A.P. 72, F.A.P. 67, F.A.P. 75 & F.A.P. 668  
 • D-6 SPFLD-CLRLAKE DIRKSEN 2002

F.A.P. RTE.	SECTION	COUNTY	TOTAL SHEETS	SHEET NO.
*	**	SANGAMON	363	50
STA. TO STA.		ILLINOIS FED. AID PROJECT		
FED. ROAD DIST. NO.		CONTRACT NO. 72088		



SHEET 18 OF 34

REVISIONS	
NAME	DATE

ILLINOIS DEPARTMENT OF TRANSPORTATION

**STAGE III CONSTRUCTION**

SCALE: VERT. 1/8"=1'-0"  
 HORIZ. 1/4"=1'-0"

DATE 1/05

DRAWN BY NJV  
 CHECKED BY CWG