

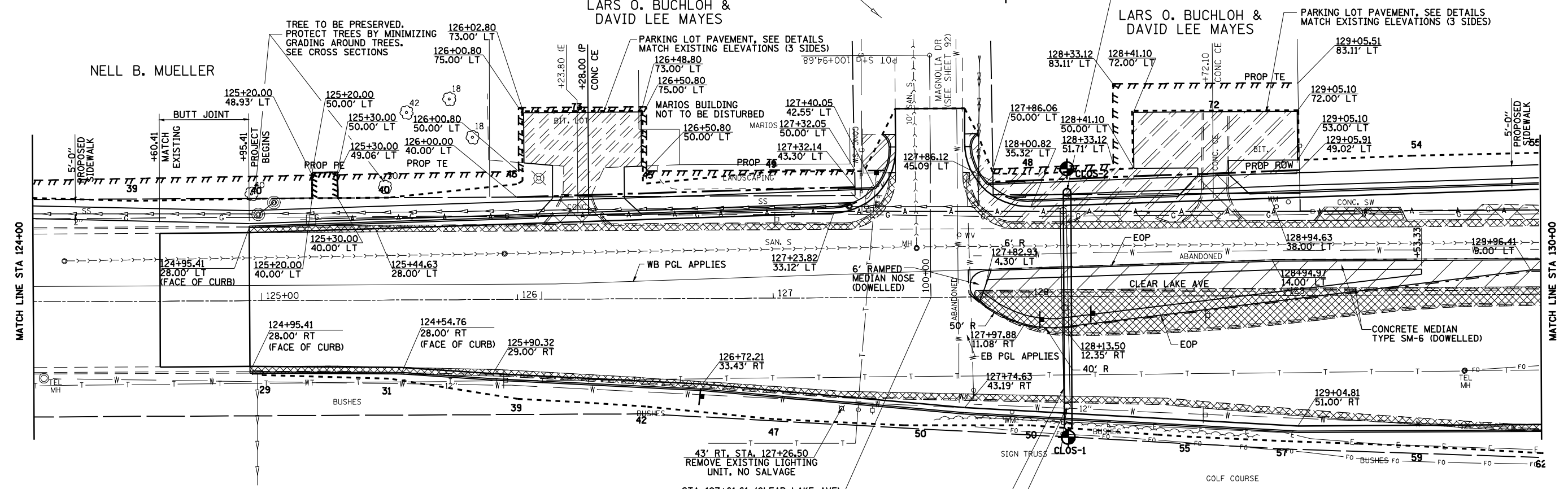
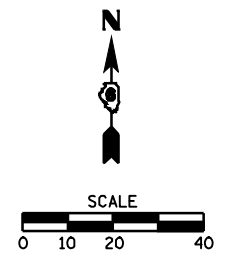
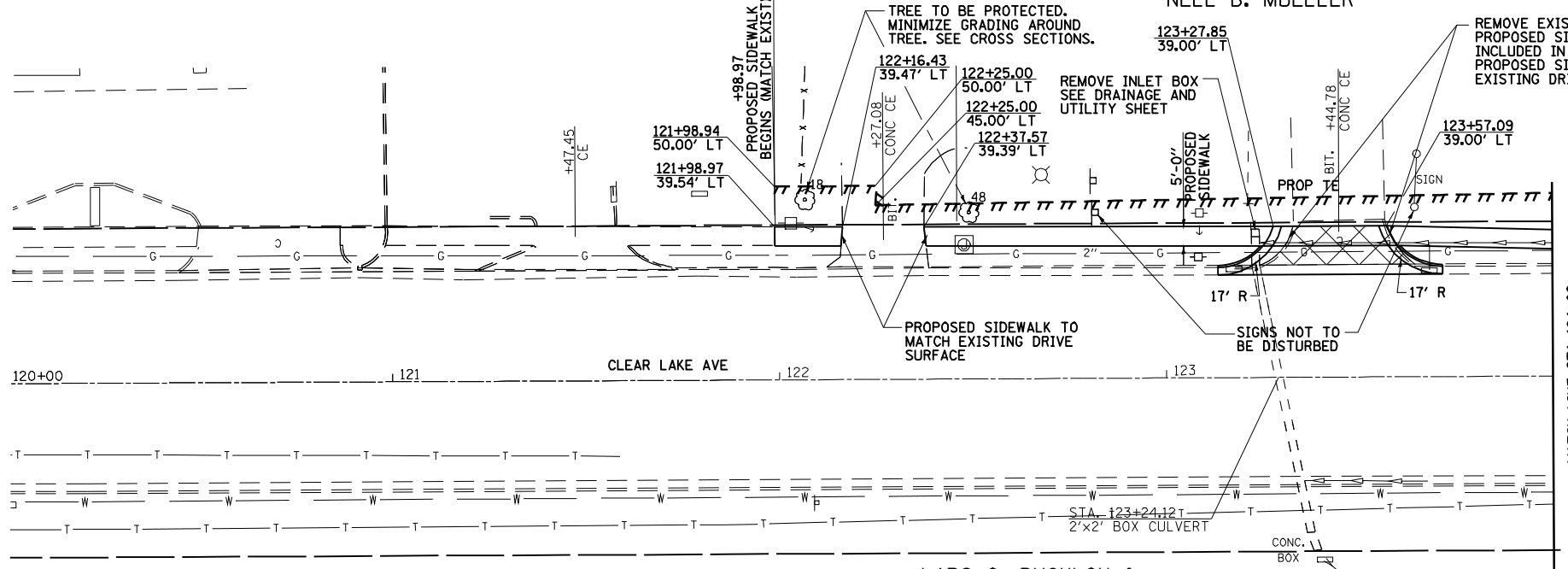
SEC 25, T16N, R5W, 3RD PM

GRANT F. MUELLER

NELL B. MUELLER

• F.A.P. 72, F.A.P. 67, F.A.P. 75 & F.A.P. 668
• D-6 SPFLD-CLRLAKE DIRKSEN 2002

F.A.P. RTE.	SECTION	COUNTY	TOTAL SHEETS	SHEET NO.
*	**	SANGAMON	363	67
STA. 120+00.00 TO STA. 130+00.00				
FED. ROAD DIST. NO. ILLINOIS FED. AID PROJECT				
CONTRACT NO. 72088				



SPECIAL SIDEWALK ELEVATIONS

STATION	RT EDGE	LT EDGE
124+50	587.54	587.64
125+00	587.71	587.61
125+50	588.11	588.01
126+00	588.98	589.08

LEGEND

	MEDIAN & C&G REMOVAL		DRIVEWAY PAVEMENT REMOVAL
	PAVEMENT REMOVAL		PARKING LOT REMOVAL
	CONSTRUCTION LIMITS		

SEC 36, T16N, R5W, 3RD PM

SPRINGFIELD PARK DISTRICT

CLEAR LAKE AVE