

SEC 25, T16N, R5W, 3RD PM

* F.A.L. 72, F.A.P. 67, F.A.P. 75 & F.A.P. 668
** D-6 SPFLD-CLRLAKE DIRKSEN 2002

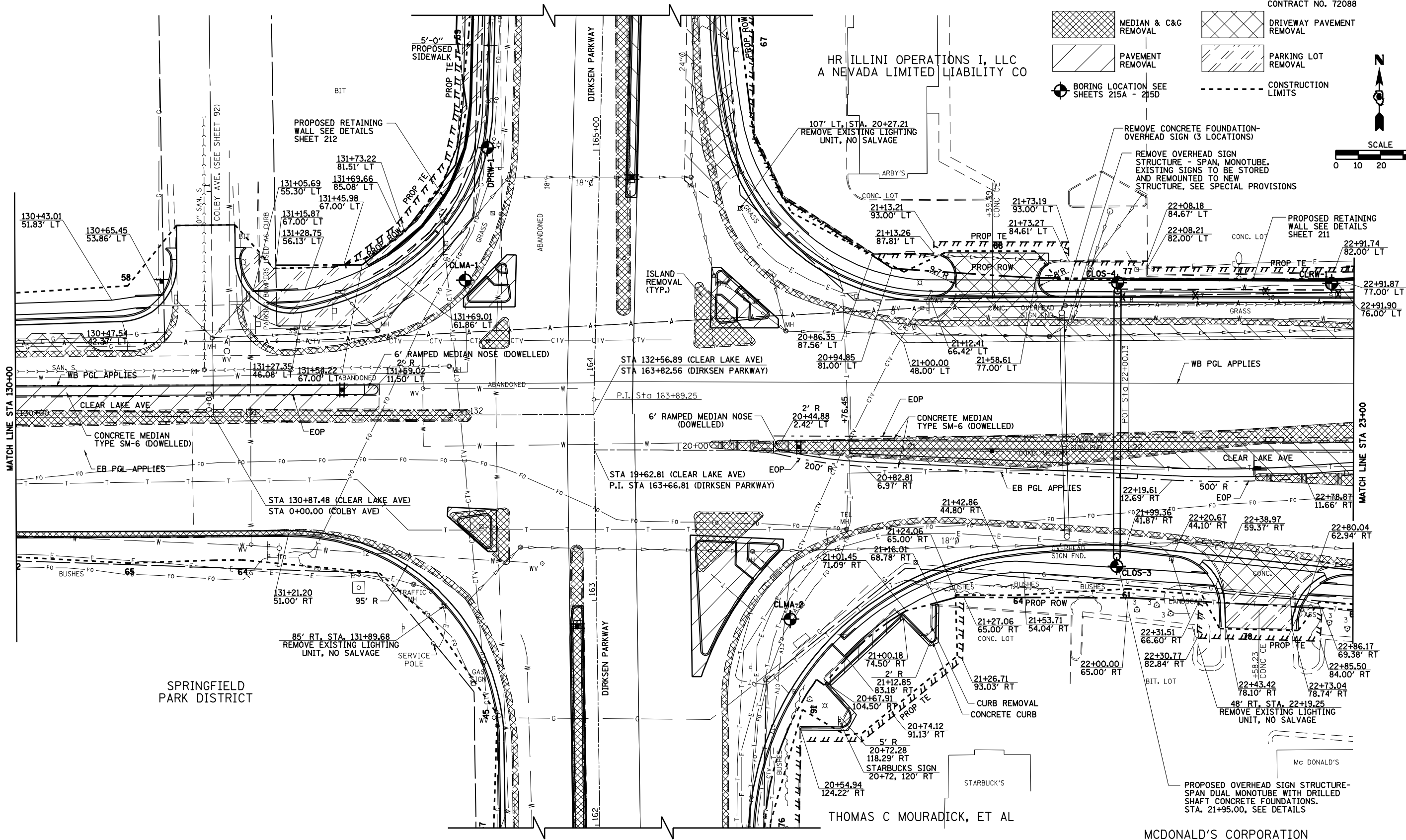
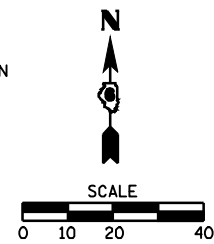
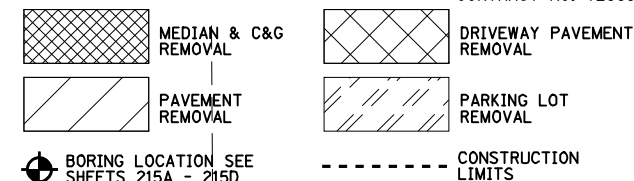
F.A. RTE.	SECTION	COUNTY	TOTAL SHEETS	SHEET NO.
*	**	SANGAMON	363	69

STA.	TO STA.
130+00.00	23+00.00

FED. ROAD DIST. NO.	ILLINOIS	FED. AID PROJECT

CONTRACT NO. 72088

LEGEND



SEC 36, T16N, R5W, 3RD PM

HR ILLINI OPERATIONS I, LLC
A NEVADA LIMITED LIABILITY CO

107' LT, STA. 20+27.21
REMOVE EXISTING LIGHTING
UNIT, NO SALVAGE

REMOVE CONCRETE FOUNDATION-
OVERHEAD SIGN (3 LOCATIONS)

REMOVE OVERHEAD SIGN
STRUCTURE - SPAN, MONOTUBE.
EXISTING SIGNS TO BE STORED
AND REMOUNTED TO NEW
STRUCTURE, SEE SPECIAL PROVISIONS

PROPOSED RETAINING
WALL SEE DETAILS
SHEET 211

SPRINGFIELD
PARK DISTRICT

THOMAS C MOURADICK, ET AL

MCDONALD'S CORPORATION

CLEAR LAKE AVE