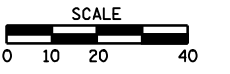


• F.A.I. 72, F.A.P. 67, F.A.P. 75 & F.A.P. 668
 ** D-6 SPFLD-CLRLAKE DIRKSEN 2002

F.A. RTE.	SECTION	COUNTY	TOTAL SHEETS	SHEET NO.
*	**	SANGAMON	363	82
STA. 150+00.00		TO STA. 156+00.00		
FED. ROAD DIST. NO.		ILLINOIS	FED. AID PROJECT	
CONTRACT NO. 72088				

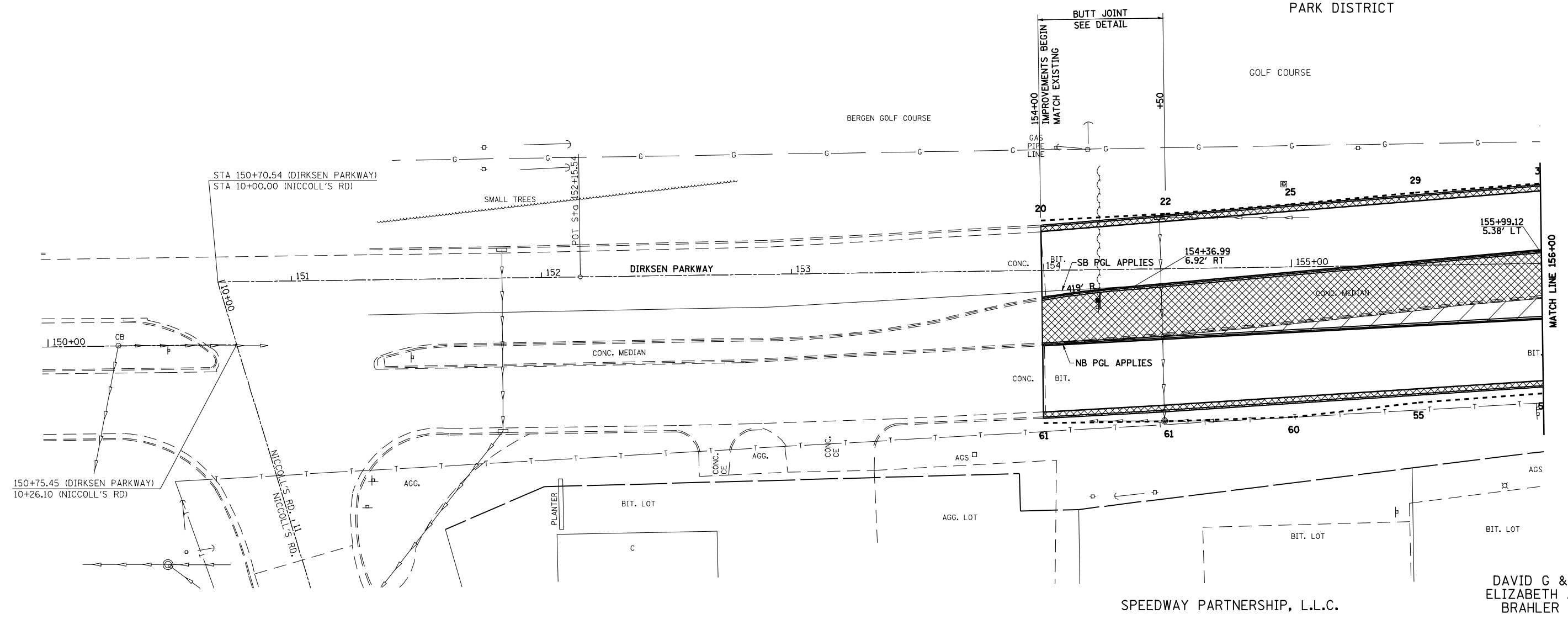


SEC 36, T16N, R5W, 3RD PM

SPRINGFIELD
 PARK DISTRICT

GOLF COURSE

BERGEN GOLF COURSE



SPEEDWAY PARTNERSHIP, L.L.C.

DAVID G &
 ELIZABETH A
 BRAHLER

LEGEND

- MEDIAN & C&G REMOVAL
- DRIVEWAY PAVEMENT REMOVAL
- PAVEMENT REMOVAL
- PARKING LOT REMOVAL
- CONSTRUCTION LIMITS

DIRKSEN PARKWAY