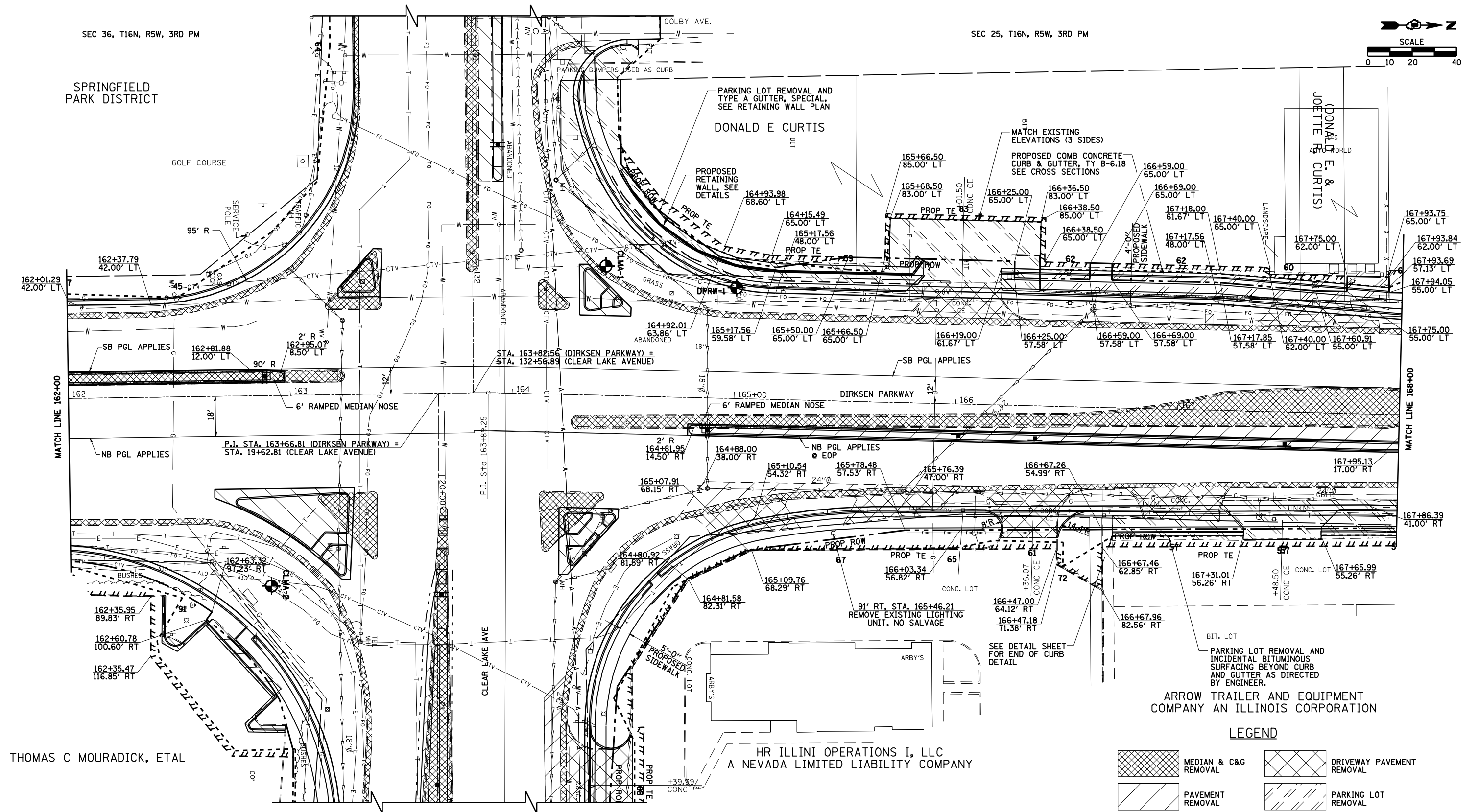
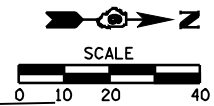


F.A.I. 72, F.A.P. 67, F.A.P. 75 & F.A.P. 668
 D-6 SPFLD-CLRLAKE DIRKSEN 2002

F.A. RTE.	SECTION	COUNTY	TOTAL SHEETS	SHEET NO.
*	**	SANGAMON	363	86
STA. 162+00.00		TO STA. 168+00.00		
FED. ROAD DIST. NO.		ILLINOIS FED. AID PROJECT		
CONTRACT NO. 72088				



THOMAS C MOURADICK, ETAL

LEGEND

	MEDIAN & C&G REMOVAL		DRIVEWAY PAVEMENT REMOVAL
	PAVEMENT REMOVAL		PARKING LOT REMOVAL
	CONSTRUCTION LIMITS		BORING LOCATION SEE SHEET 215A - 215D

ARROW TRAILER AND EQUIPMENT COMPANY AN ILLINOIS CORPORATION

HR ILLINI OPERATIONS I, LLC
 A NEVADA LIMITED LIABILITY COMPANY