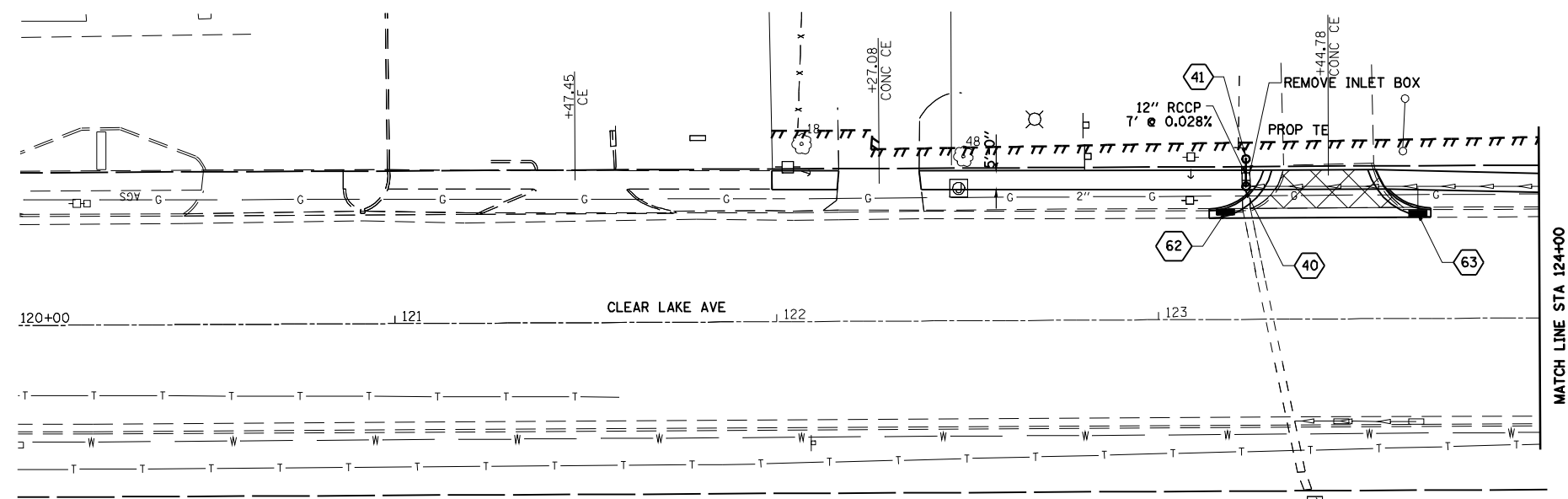
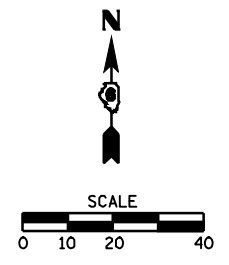


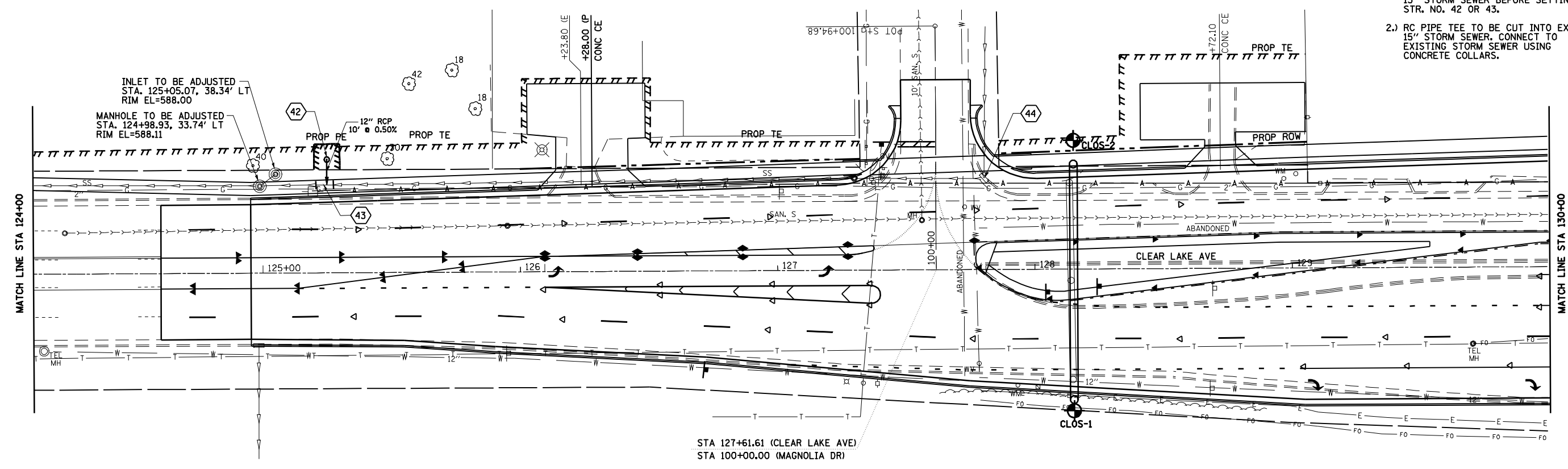
F.A. RTE.	SECTION	COUNTY	TOTAL SHEETS	SHEET NO.
•	••	SANGAMON	363	109
STA. 124+95.41		TO STA. 130+00.00		
FED. ROAD DIST. NO.	ILLINOIS	FED. AID PROJECT		
CONTRACT NO. 72088				
• F.A.I. 72, F.A.P. 67, F.A.P. 75 & F.A.P. 668				
•• D-6 SPFLD-CLRLAKE DIRKSEN 2002				



- 62 STA. 123+17.70, 28.09' LT
ADJ INLET
TY 3, F&G
EOP EL=586.94
- 63 STA. 123+68.13, 27.50' LT
ADJ INLET
TY 3, F&G
EOP EL=586.55
- 40 STA. 123+23.18, 34.83' LT
PR MH, TY A, 5'
TY 1, F&CLID
RIM EL=587.05
INV EL=583.19 (S)
INV EL=583.30 (N)
- 41 STA. 123+23.18, 42.00' LT
PR INLET, TYPE A
TY 8 GRATE
RIM EL=586.40
INV EL=583.50 (S)
INV EL=585.10 (N)
INV EL=585.15 (W)
- 44 STA. 127+80.34, 35.55' LT
ADJ MH
TY 1, F&CLID
RIM EL=590.29
- 42 STA. 125+25, 44.00' LT
PR INLET, TYPE A
TY 8 GRATE
RIM EL=586.60
INV EL=585.15
(SEE NOTE 1)
- 43 STA. 125+25, 34' LT
RC PIPE TEE 15P 12R
INV EL=585.10
(SEE NOTE 1 & 2)



- NOTES:**
- FIELD VERIFY ELEVATION OF EXISTING 15" STORM SEWER BEFORE SETTING STR. NO. 42 OR 43.
 - RC PIPE TEE TO BE CUT INTO EXISTING 15" STORM SEWER, CONNECT TO EXISTING STORM SEWER USING CONCRETE COLLARS.



LEGEND
 BORING LOCATION
 SEE SHEET 215A - 215D