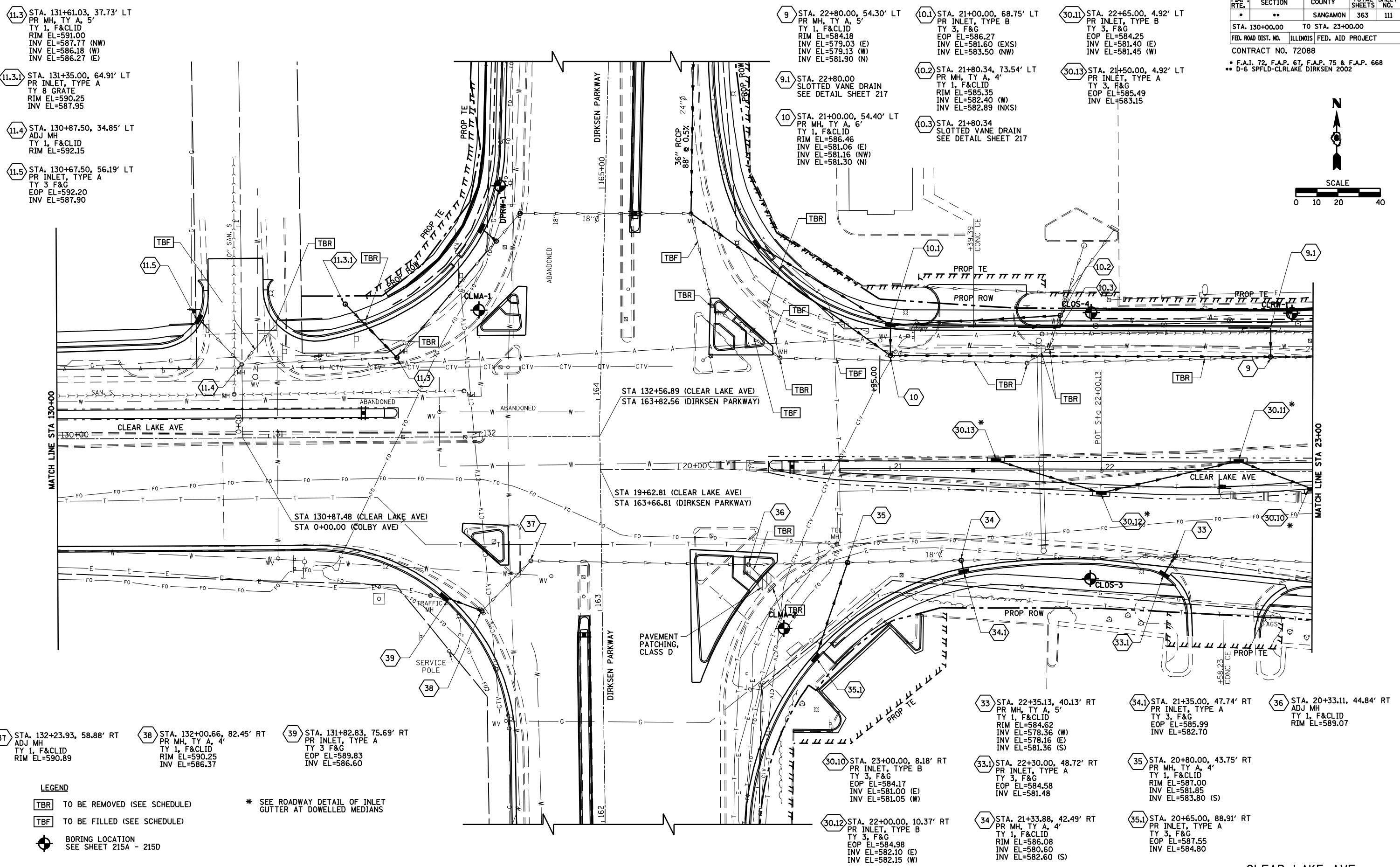
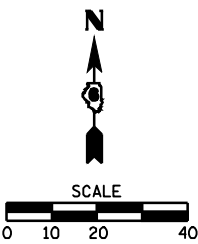


F.A. RTE.	SECTION	COUNTY	TOTAL SHEETS	SHEET NO.
*	**	SANGAMON	363	111
STA. 130+00.00 TO STA. 23+00.00				
FED. ROAD DIST. NO. ILLINOIS FED. AID PROJECT				
CONTRACT NO. 72088				
* F.A.I. 72, F.A.P. 67, F.A.P. 75 & F.A.P. 668				
** D-6 SPFLD-CLRLAKE DIRKSEN 2002				



- 11.3 STA. 131+61.03, 37.73' LT  
PR MH, TY A, 5'  
TY 1, F&CLID  
RIM EL=591.00  
INV EL=587.77 (NW)  
INV EL=586.18 (W)  
INV EL=586.27 (E)
- 11.3.1 STA. 131+35.00, 64.91' LT  
PR INLET, TYPE A  
TY 8 GRATE  
RIM EL=590.25  
INV EL=587.95
- 11.4 STA. 130+87.50, 34.85' LT  
ADJ MH  
TY 1, F&CLID  
RIM EL=592.15
- 11.5 STA. 130+67.50, 56.19' LT  
PR INLET, TYPE A  
TY 3 F&G  
EOP EL=592.20  
INV EL=587.90

- 9 STA. 22+80.00, 54.30' LT  
PR MH, TY A, 5'  
TY 1, F&CLID  
RIM EL=584.18  
INV EL=579.03 (E)  
INV EL=579.13 (W)  
INV EL=581.90 (N)
- 10.1 STA. 21+00.00, 68.75' LT  
PR INLET, TYPE B  
TY 3, F&G  
EOP EL=586.27  
INV EL=581.60 (E(S))  
INV EL=583.50 (W)
- 30.11 STA. 22+65.00, 4.92' LT  
PR INLET, TYPE B  
TY 3, F&G  
EOP EL=584.25  
INV EL=581.40 (E)  
INV EL=581.45 (W)
- 9.1 STA. 22+80.00  
SLOTTED VANE DRAIN  
SEE DETAIL SHEET 217
- 10.2 STA. 21+80.34, 73.54' LT  
PR MH, TY A, 4'  
TY 1, F&CLID  
RIM EL=585.35  
INV EL=582.40 (W)  
INV EL=582.89 (N(S))
- 30.13 STA. 21+50.00, 4.92' LT  
PR INLET, TYPE A  
TY 3, F&G  
EOP EL=585.49  
INV EL=583.15
- 10 STA. 21+00.00, 54.40' LT  
PR MH, TY A, 6'  
TY 1, F&CLID  
RIM EL=586.46  
INV EL=581.06 (E)  
INV EL=581.16 (NW)  
INV EL=581.30 (N)
- 10.3 STA. 21+80.34  
SLOTTED VANE DRAIN  
SEE DETAIL SHEET 217

- 37 STA. 132+23.93, 58.88' RT  
ADJ MH  
TY 1, F&CLID  
RIM EL=590.89
- 38 STA. 132+00.66, 82.45' RT  
PR MH, TY A, 4'  
TY 1, F&CLID  
RIM EL=590.25  
INV EL=586.37
- 39 STA. 131+82.83, 75.69' RT  
PR INLET, TYPE A  
TY 3 F&G  
EOP EL=589.83  
INV EL=586.60

- 33 STA. 22+35.13, 40.13' RT  
PR MH, TY A, 5'  
TY 1, F&CLID  
RIM EL=584.62  
INV EL=578.36 (W)  
INV EL=578.16 (E)  
INV EL=581.36 (S)
- 34.1 STA. 21+35.00, 47.74' RT  
PR INLET, TYPE A  
TY 3, F&G  
EOP EL=585.99  
INV EL=582.70
- 36 STA. 20+33.11, 44.84' RT  
ADJ MH  
TY 1, F&CLID  
RIM EL=589.07
- 30.10 STA. 23+00.00, 8.18' RT  
PR INLET, TYPE B  
TY 3, F&G  
EOP EL=584.17  
INV EL=581.00 (E)  
INV EL=581.05 (W)
- 33.1 STA. 22+30.00, 48.72' RT  
PR INLET, TYPE A  
TY 3, F&G  
EOP EL=584.58  
INV EL=581.48
- 35 STA. 20+80.00, 43.75' RT  
PR MH, TY A, 4'  
TY 1, F&CLID  
RIM EL=587.00  
INV EL=581.85  
INV EL=583.80 (S)
- 30.12 STA. 22+00.00, 10.37' RT  
PR INLET, TYPE B  
TY 3, F&G  
EOP EL=584.98  
INV EL=582.10 (E)  
INV EL=582.15 (W)
- 34 STA. 21+33.88, 42.49' RT  
PR MH, TY A, 4'  
TY 1, F&CLID  
RIM EL=586.08  
INV EL=580.60  
INV EL=582.60 (S)
- 35.1 STA. 20+65.00, 88.91' RT  
PR INLET, TYPE A  
TY 3, F&G  
EOP EL=587.55  
INV EL=584.80